



3450 Penrose Place

Suite 250, Boulder, CO

Jaime Pletcher

jaime@gibbonswhite.com
(303) 586-5936

www.gibbonswhite.com

 **Property Info & Gallery**

 **View Map**

Light & Bright Move-In Ready Professional Condo

Unit Size	1,776 sq. ft.
Sale Price	\$795,000 (\$447.63 / sq. ft.)

Fully Remodeled Unit Ideal for Professional or Medical Office, Design Studio, Med Spa, Salon, Creative or Wellness Space

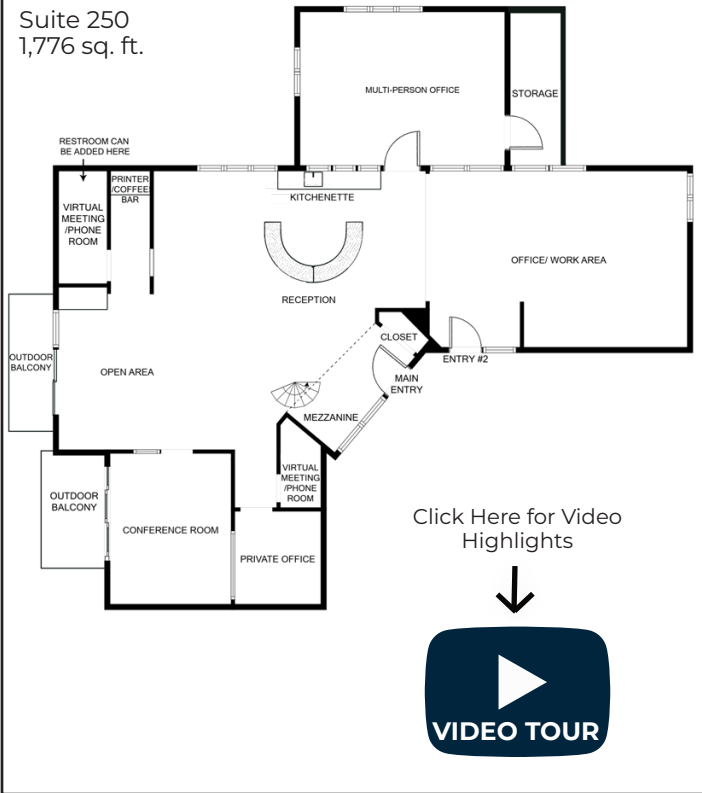
- Featuring 20ft Vaulted Ceilings, Mountain Views, and Two Private Outdoor Balconies
- A Mix of Open Work Areas and Private Office/ Meeting Rooms
- Spacious and Flexible Layout Flooded with Natural Light
- Fully Equipped Kitchen with Plumbing to Add Fixtures or Private Restroom
- Opportunity for Signage with Back Stairway for Direct Entry
- Abundant Parking and Easy Access via RTD, Hiking, and Biking Paths
- Assumable SBA Loan at 3.25% for Approximately 30% of Purchase Price

The information included has been obtained from sources believed reliable. While we do not doubt the accuracy of the information, it has not been verified and no guarantee, warranty, or representation is being made.

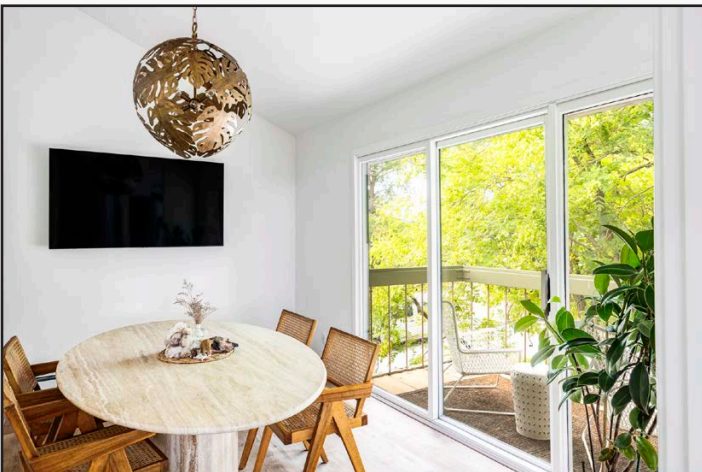
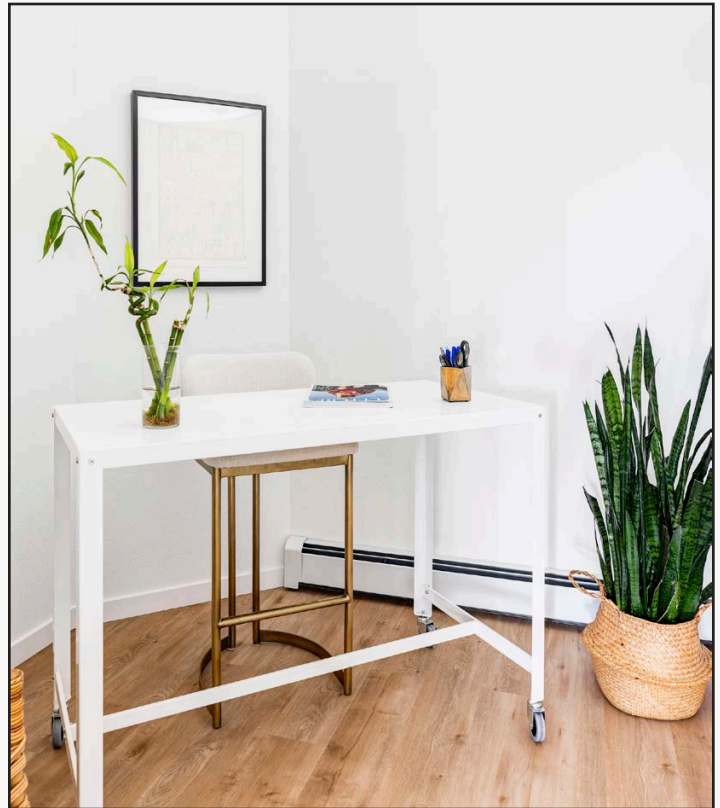


2305 Canyon Blvd, Suite 200, Boulder, CO 80302 - (303) 442-1040

Suite 250
1,776 sq. ft.



Click Here for Video Highlights



The information included has been obtained from sources believed reliable. While we do not doubt the accuracy of the information, it has not been verified and no guarantee, warranty, or representation is being made.