

# Covington Center

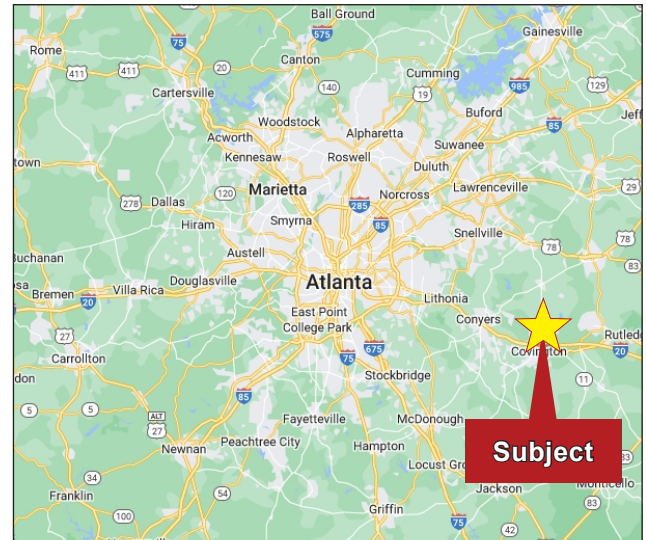
## 7,000 SF of Space Available

### Ideally Located Right Off Interstate 20



**6155-6199 Highway 278, Covington, GA 30014**

- (1) 1,500 SF, (1) 2,350 SF, & (2) 1,575 SF
- Ideally located off Interstate 20
- Sits across from Piedmont Hospital and next to Piedmont Urgent Care
- Heavy traffic counts on Highway 278 (about 53,000 VPD)
- Situated in one of Covington's commercial corridors



#### Demographics

	2-Mile Radius	5-Mile Radius	10-Mile Radius
Total Population 2023	10,821	42,683	145,833
Projected 2028 Population	11,255	44,816	152,813
Annual Growth 2010-2023	0.8%	1.4%	1.3%
Total Households	3,955	14,922	51,061
Average Household Income	\$62,206	\$68,641	\$76,123
Median Age	36	37	37.6

#### Traffic Count

**52,810** Highway 278

#### FOR MORE INFORMATION, CONTACT:

Adam Hale  
404.281.2788 Cell  
678.894.1580 Direct  
ahale@haleretailgroup.com

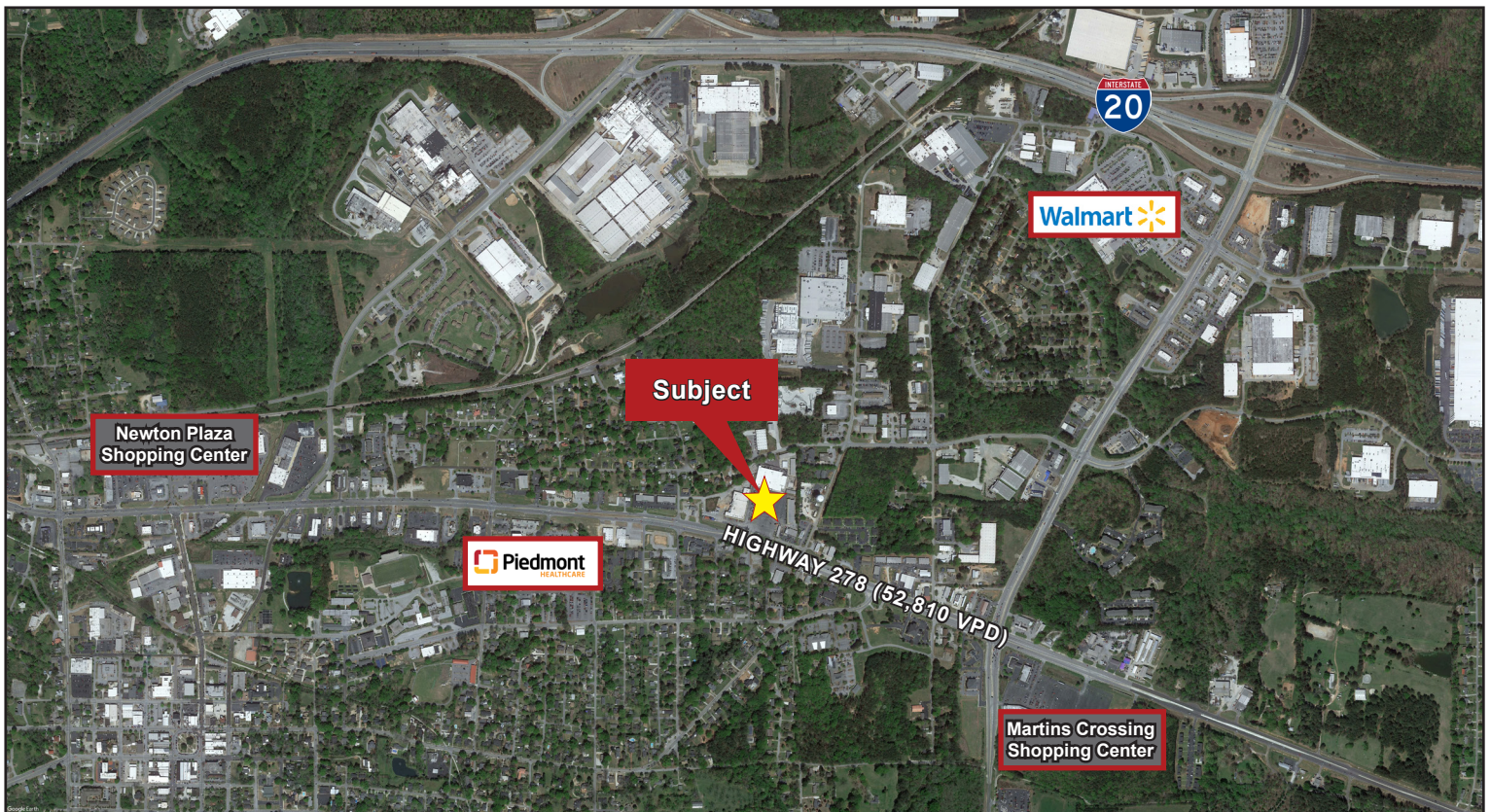
1303 Hightower Trail, Suite 201  
Atlanta, Georgia 30350  
www.haleretailgroup.com  
770.594.1309 Office

FOR LEASE



LEASE AT  
**Covington Center**

6155-6199 Highway 278  
Covington, GA 30014



**FOR MORE INFORMATION, CONTACT:**

Adam Hale  
404.281.2788 Cell  
678.894.1580 Direct  
ahale@haleretailgroup.com

1303 Hightower Trail, Suite 201  
Atlanta, Georgia 30350  
www.haleretailgroup.com  
770.594.1309 Office



The information herein was obtained from sources deemed reliable and, while believed correct, is offered subject to errors, price changes, and prior sale or withdrawal without notice.