



2727 Fairview

**2727 FAIRVIEW AVENUE
ROSEVILLE, MN**

Available Space

24,530 SF

(Divisible to 10,000 SF)

Lease Rate

\$18.00 PSF Gross + Utilities

Terms

Flexible

Office Space for Lease

Property Highlights

- Cost effective move-in ready space
- Highly flexible lease terms
- Easy access to 35W & Snelling Avenue
- Close proximity to Rosedale Center and Rosedale Commons Shopping Center
- Ample parking

For information, please contact:

Steve Shepherd SIOR

Managing Director

t 612-430-9973

steve.shepherd@nmrk.com

Jay Chmielewski

Managing Director

t 612-430-9982

jay.chmielewski@nmrk.com

100 South Fifth Street, Suite 2100
Minneapolis, MN 55402

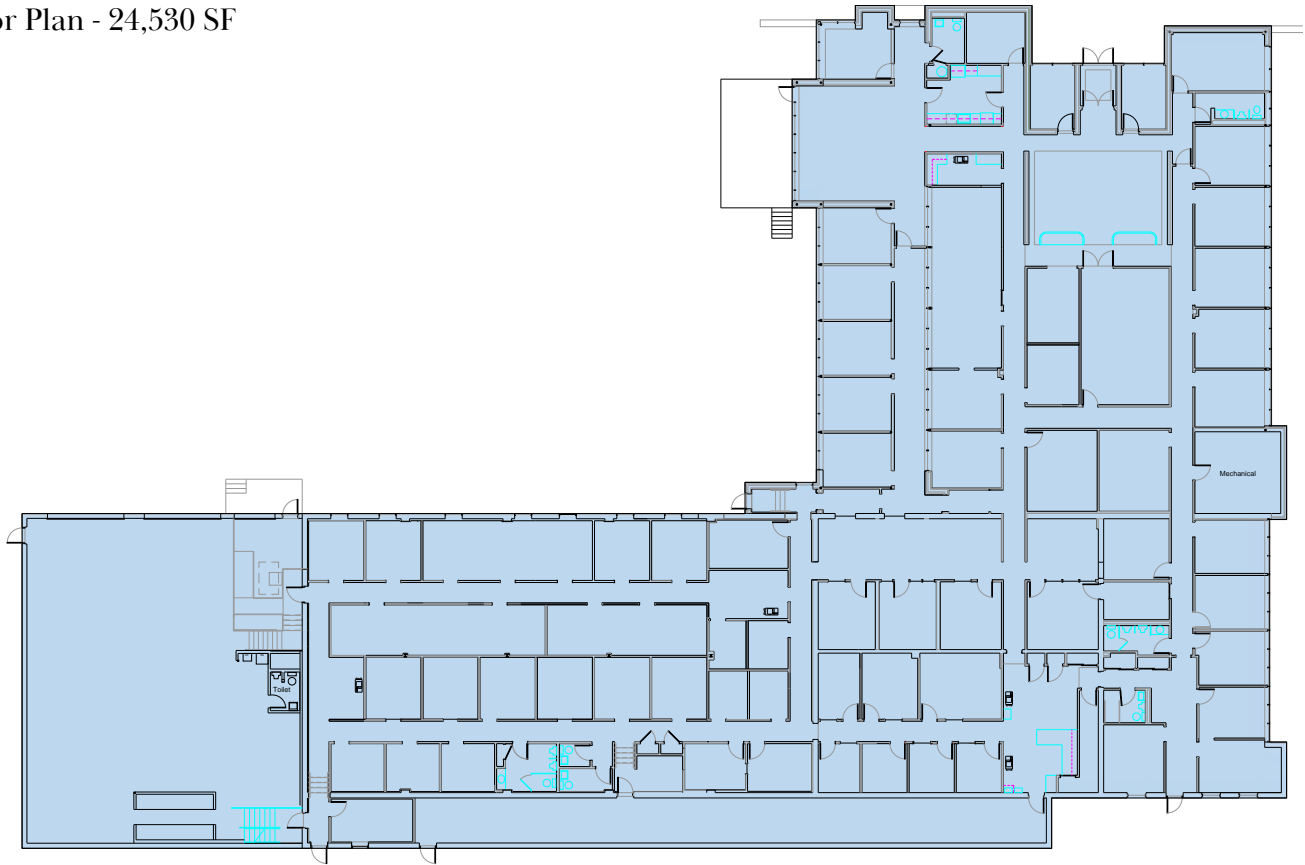
NEWMARK

nmrk.com

The information contained herein has been obtained from sources deemed reliable but has not been verified and no guarantee, warranty or representation, either express or implied, is made with respect to such information. Terms of sale or lease and availability are subject to change or withdrawal without notice.

2727 FAIRVIEW AVENUE | ROSEVILLE, MN

Floor Plan - 24,530 SF



Area Map



NEWMARK