

FOR SALE

1005 Mae Drive at I-10 East

Houston, TX 77015



63,872 SF ON 3.10 ACRES

HVAC CRANE SERVED MACHINE SHOP



BUILDING INFORMATION



±63,872 SF

TOTAL BUILDING SIZE

±8,950 SF

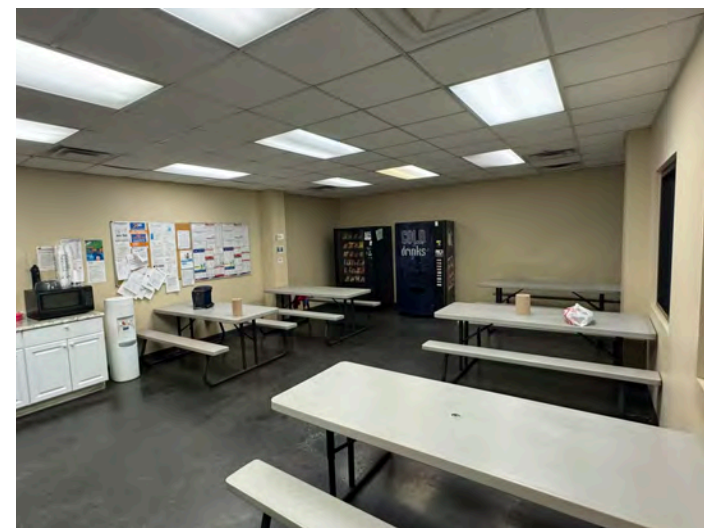
OFFICE

3.10

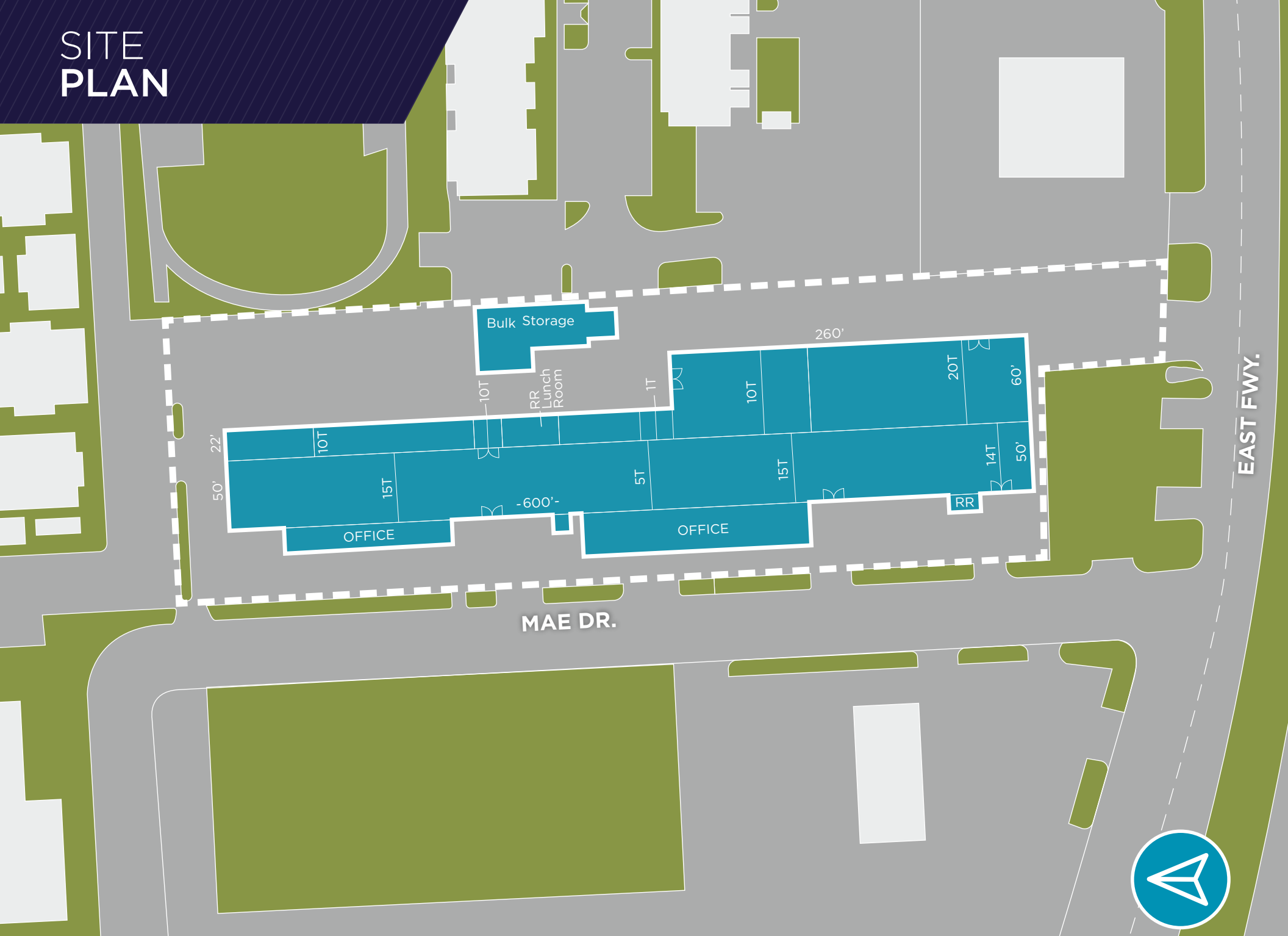
ACRES

CRANE SERVED HVAC MACHINE SHOP	FULLY DEVELOPED WITH BUILDINGS OR PAVING	(1) 20-TON CRANE	(3) 10-TON CRANE	(1) 14-TON CRANE
(2) 15-TON CRANE	(1) 1-TON AND (1) 5-TON CRANE	FULLY FENCED	(2) ELECTRICAL FEEDS OF 2000 AMPS, EACH 3 PHASE 480 VOLTS	FULLY INSULATED
BUS BAR ELECTRIC CONNECTIONS IN ALL BAYS	LIGHTING IS BOTH T-8'S AND LED'S	(5) 16' X 16' GRADE LEVEL DOORS	(1) 20' X 20' GRADE LEVEL DOOR	(2) MAIN MACHINE BAYS ARE 50' X 60' WIDE
SKYLIGHTS	MOSTLY 8" SLABS	FULLY SPRINKLERED	NATURAL GAS HEAT	(2) KOHLER GAS GENERATORS

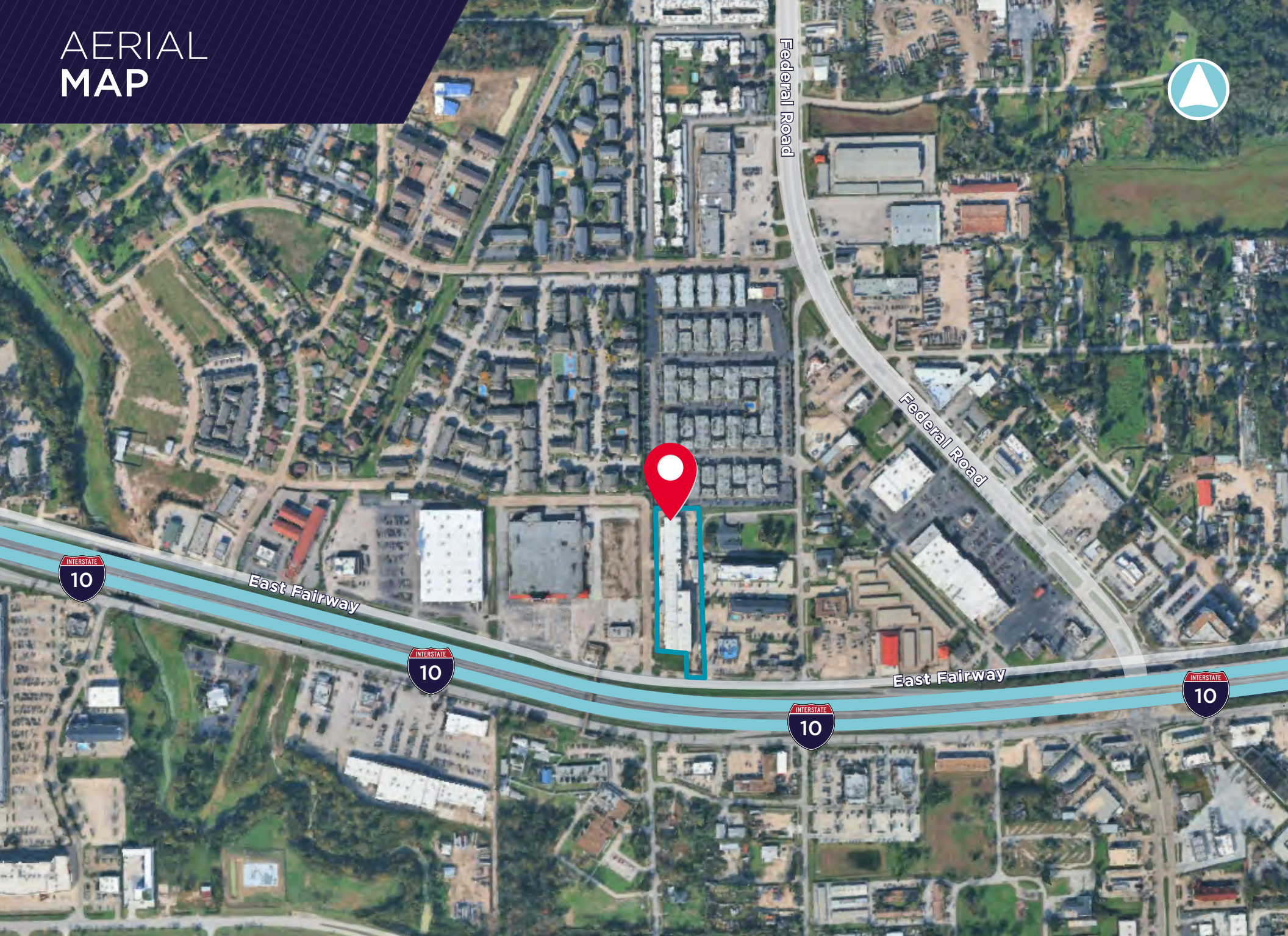
PROPERTY IMAGES



SITE PLAN



AERIAL MAP





B. KELLEY PARKER III, SIOR
Vice Chair
+1 713 963 2896
kelley.parker@cushwake.com

COE PARKER, SIOR
Senior Director
+1 713 963 2825
coe.parker@cushwake.com

JOHN F. LITTMAN, SIOR
Executive Managing Director
+1 713 963 2862
john.littman@cushwake.com