



1015 13th Street

Columbus, Georgia 31901

Property Overview

Large commercial facility originally used as a funeral home but more recently (2005) partially renovated to serve as meeting/rental space.

Main level and upstairs have rooms that would be adequate for office space. Kitchen contains industrial size gas stove and refrigerator/freezer. Hardwood flooring in Ballroom, Foyer and Living Room. Plenty of storage space.

Centralized location with HIGH traffic flow! This property offers a variety of possibilities for the right investor!

Price includes 1321 Webster Ave.

Offering Summary

Sale Price:	\$600,000 USD
Building Size:	11,063 SF
Lot Size:	0.82 Acres

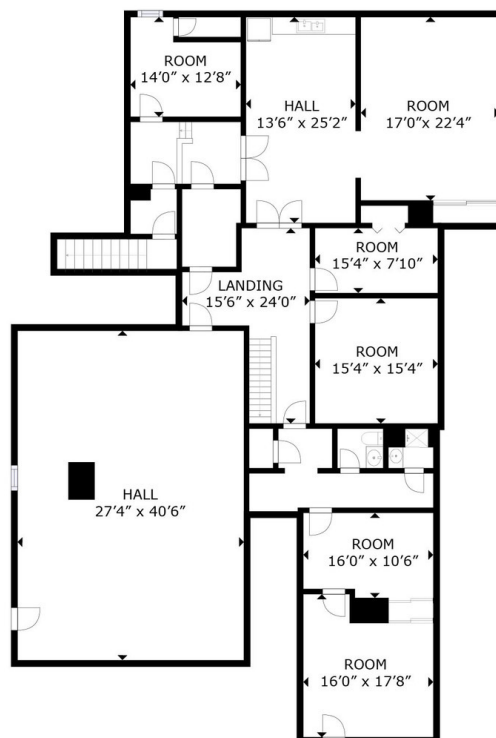
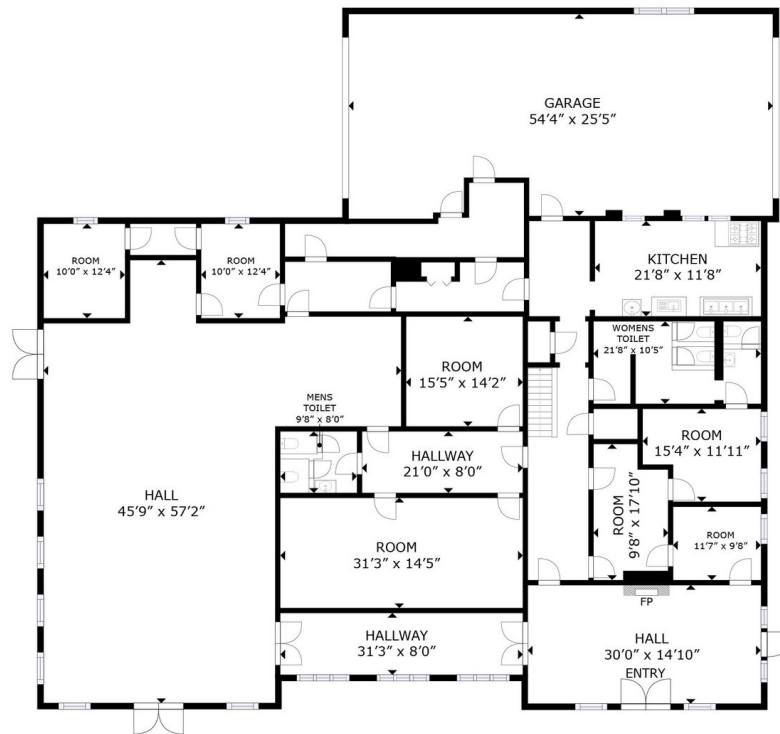
For More Information

Amy D. Gill, MICP, MRP

O: 706 660 5418 x1009

agill@g2cre.com | GA #381793

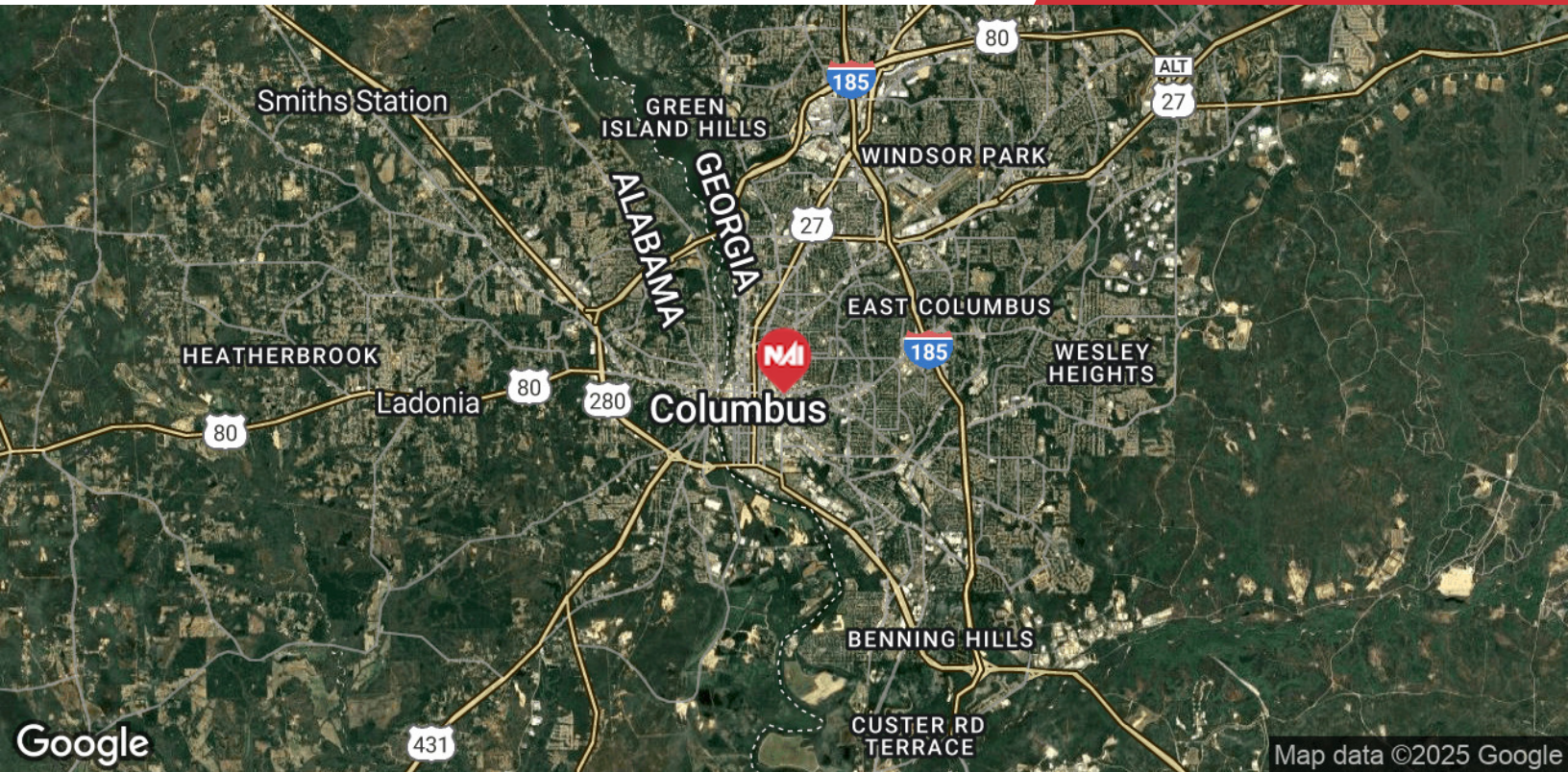






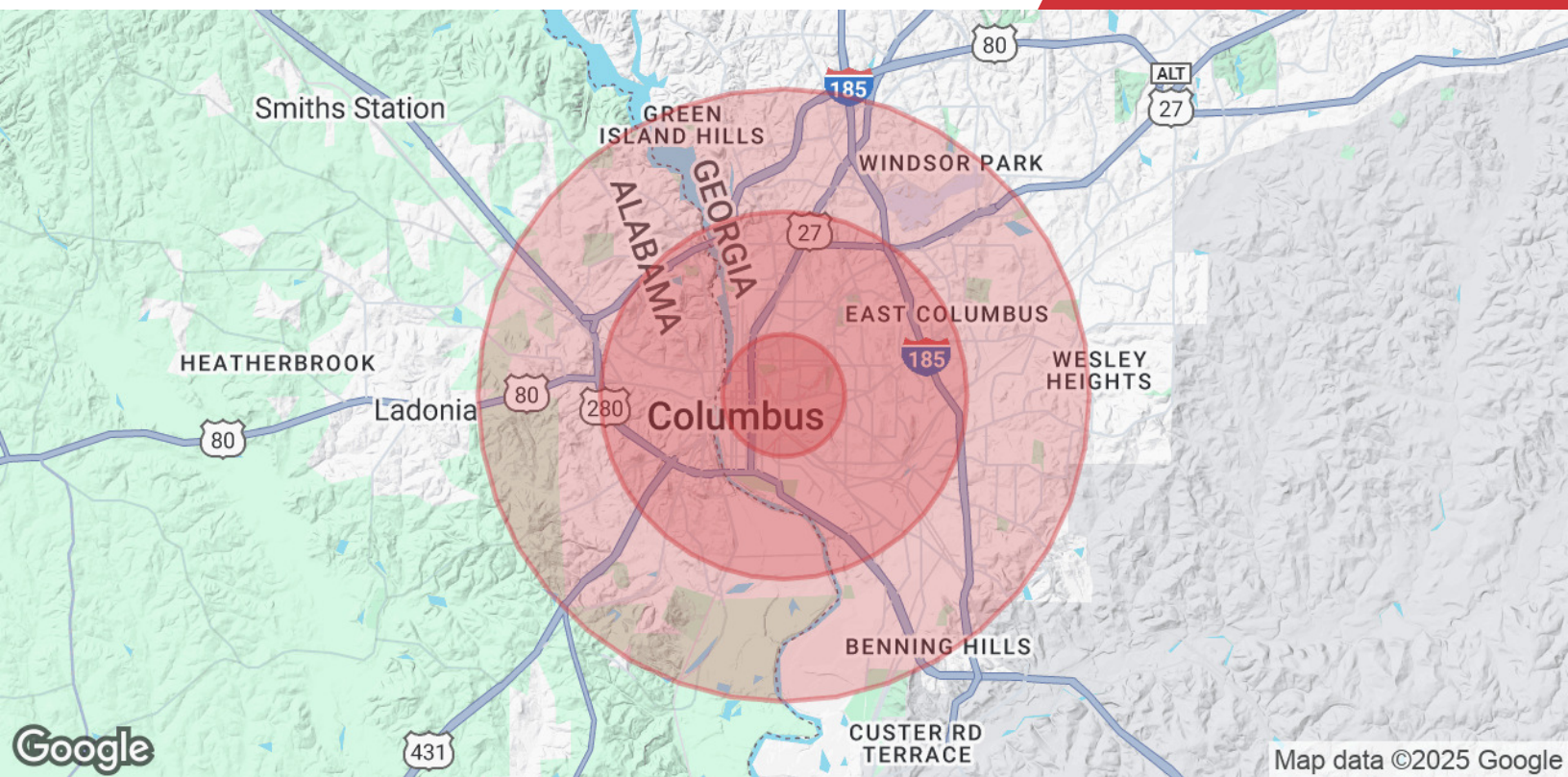
We obtained the information above from sources we believe to be reliable. However, we have not verified its accuracy and make no guarantee, warranty or representation about it. It is submitted subject to the possibility of errors, omissions, change of price, rental or other conditions, prior sale, lease or financing, or withdrawal without notice. We include projections, opinions, assumptions or estimates for example only, and they may not represent current or future performance of the property. You and your tax and legal advisors should conduct your own investigation of the property and transaction.

Post Office Box 4529
Columbus, GA 31904
706 660 5418 tel
G2cre.com



We obtained the information above from sources we believe to be reliable. However, we have not verified its accuracy and make no guarantee, warranty or representation about it. It is submitted subject to the possibility of errors, omissions, change of price, rental or other conditions, prior sale, lease or financing, or withdrawal without notice. We include projections, opinions, assumptions or estimates for example only, and they may not represent current or future performance of the property. You and your tax and legal advisors should conduct your own investigation of the property and transaction.

Post Office Box 4529
Columbus, GA 31904
706 660 5418 tel
G2cre.com



Population

	1 Mile	3 Miles	5 Miles
Total Population	6,854	61,099	138,261
Average Age	39.3	36.2	36.9
Average Age (Male)	37.1	33.8	34.1
Average Age (Female)	40.7	37.8	39.4

Households & Income

	1 Mile	3 Miles	5 Miles
Total Households	4,070	32,037	67,339
# of Persons per HH	1.7	1.9	2.1
Average HH Income	\$36,394	\$40,479	\$45,981
Average House Value	\$114,977	\$97,621	\$112,443

* Demographic data derived from 2020 ACS - US Census

Owner Disclosure Notice

Member(s) of the property ownership are licensed real estate professionals in the State of Georgia, and hold an ownership interest in the property being advertised.