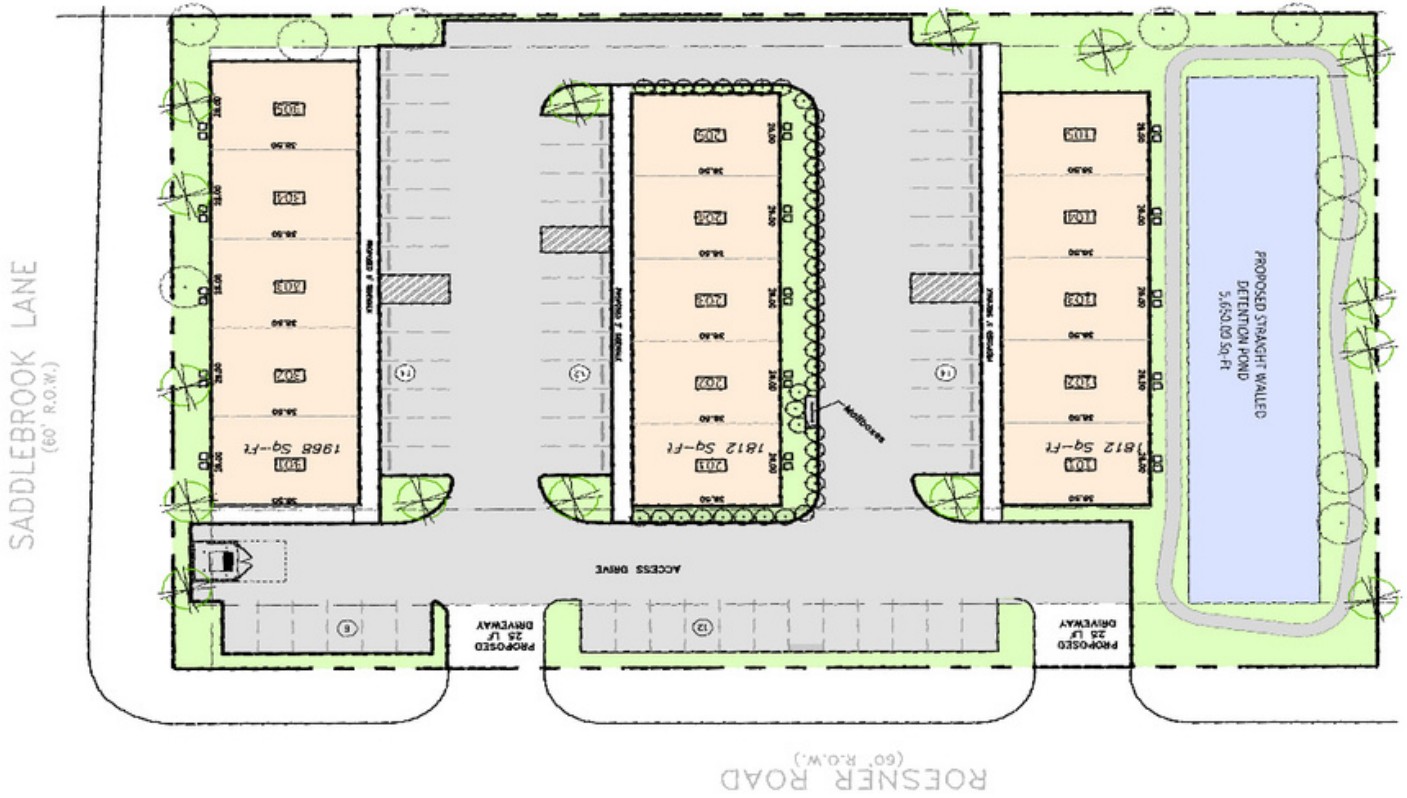




### NG OFFICE CONDO



#### Building 2:

1812 sqft each unit (2 stories)

**Unit 203** \$569,000 (mid)

**Unit 204** \$569,000 (mid)



#### Building 3:

1968 sqft each unit (2 stories)

**Unit 301** \$629,000 (end)

**Unit 302** \$619,000 (mid)

**Unit 303** \$619,000 (mid)

**Unit 304** \$619,000 (mid)

**Unit 305** \$629,000 (end)

\*Property Tax: 2.4439%

**POA Fee: Estimated at \$4410 (1812 sqft) - \$4861.60 (1960 sqft) per year per unit**

*(cover water, maintenance and insurance for the common areas and structural elements of the buildings, incl. roof, foundation and exterior walls)*

#### FOR MORE INFORMATION CONTACT



Jessica Huang



281-793-1832



jessicarealtyteam@gmail.com



24505 Roesner Road, Katy, TX 77494