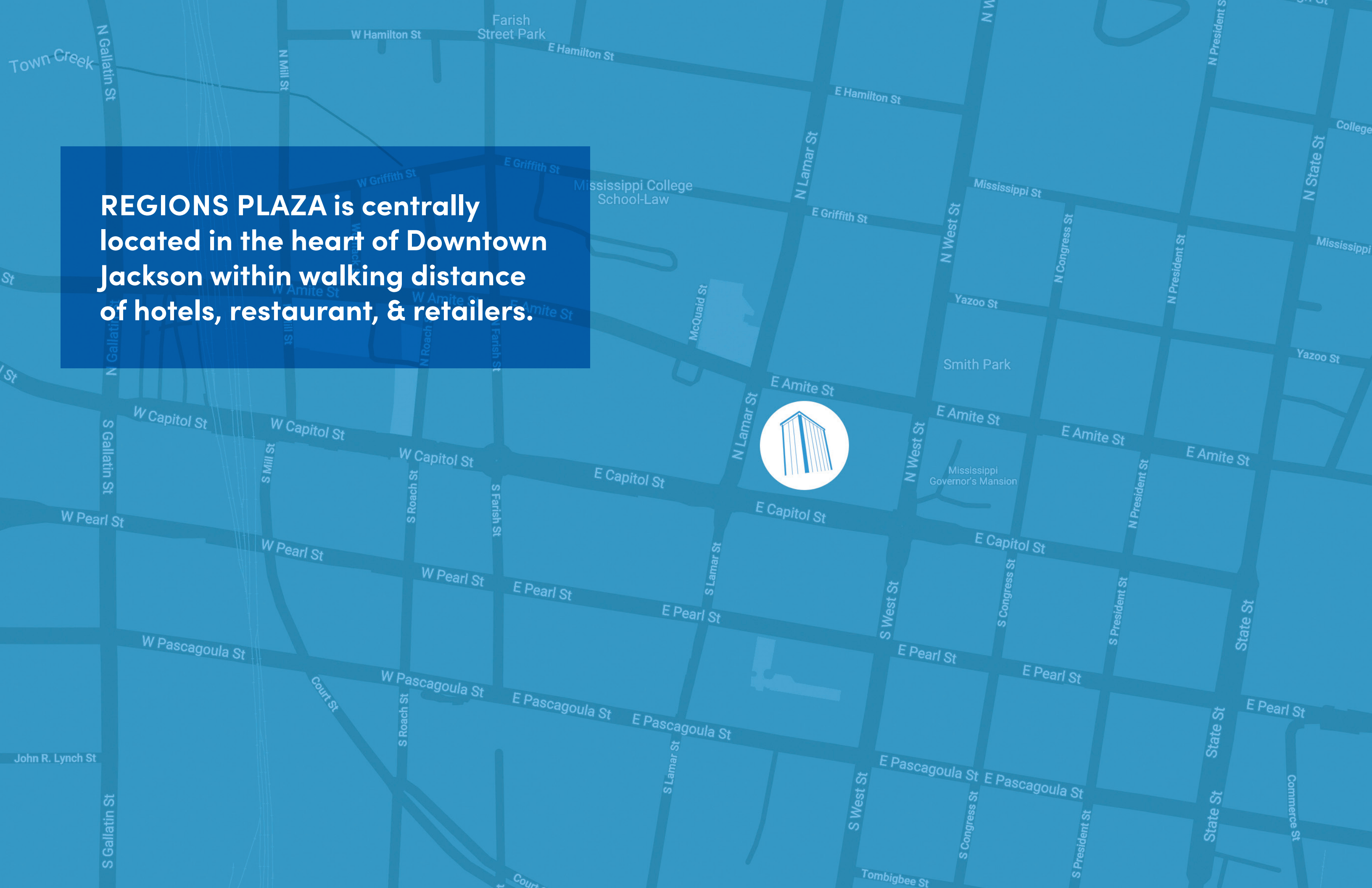


REGIONS PLAZA

Prime Office Space Available for Lease;
210 East Capitol Street
Jackson MS 39201

PINPOINT

REGIONS PLAZA is centrally located in the heart of Downtown Jackson within walking distance of hotels, restaurant, & retailers.



EXTERIOR PHOTOS



Regions Plaza offers office, retail and restaurant space in the heart of Jackson Central Business District.

The property is a 22-story Class-A office building with an enclosed nine-level parking garage. A great anchor for Jackson's skyline, Regions Plaza is the tallest building in downtown Jackson. Sporting the best features of both glass and stone construction, the concrete grid embraces each side of the inner glass tower like a modern skyscraper emerging from the cocoon of historic architecture. Distinctive signage and floodlights at the setbacks help demonstrate this structure's height.

Chick-Fil-A, Subway, McAllister's, Cups Coffee, LIVE Nutrition located within the building

22 Stories

345,000 SF office tower located within the central business district

~ \$10,000,000 in capital improvements over the past 24 months

Connected via skybridge to the Jackson Marriott Hotel

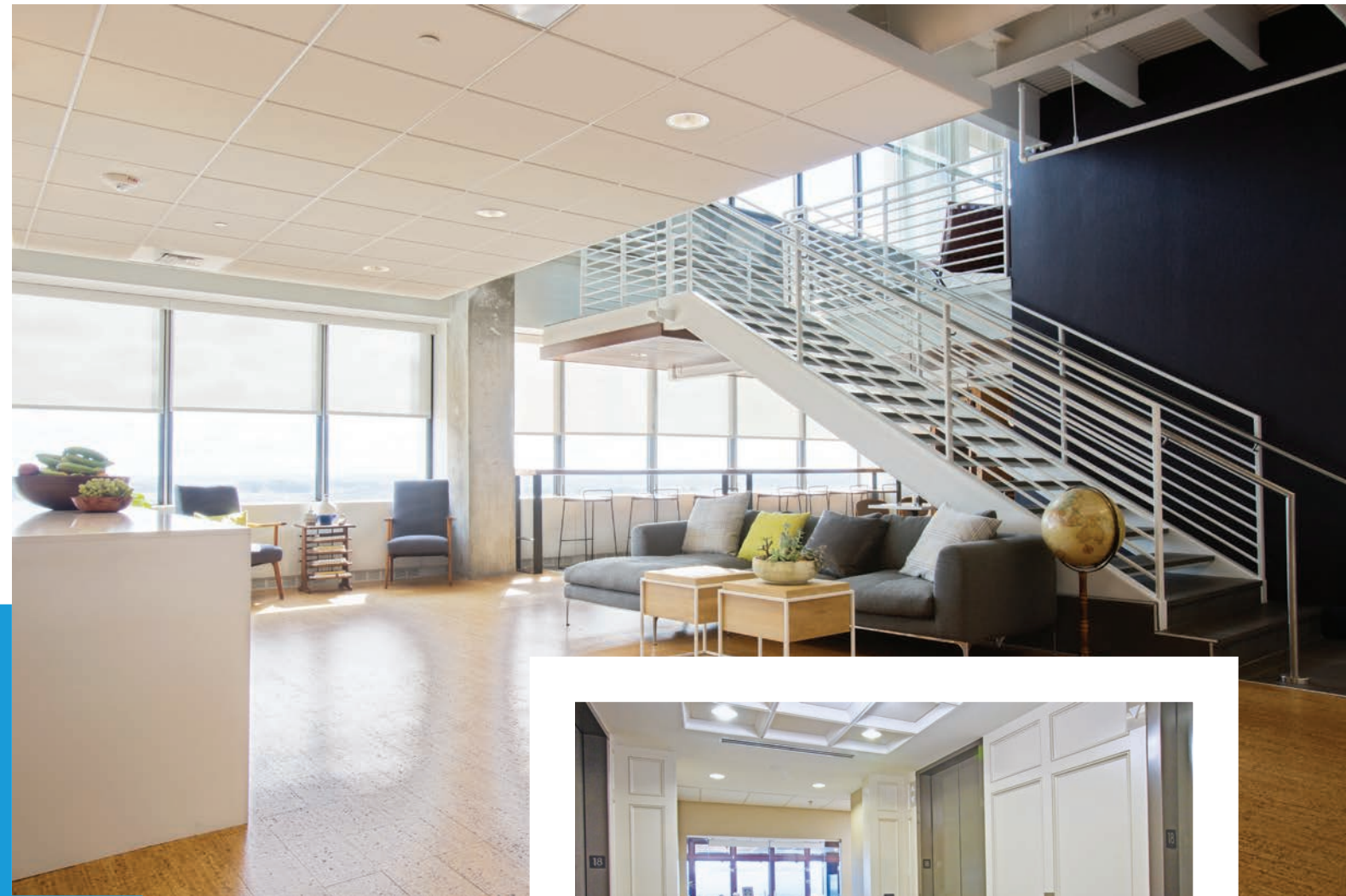
On site management, janitorial & engineering staff

24/7 Security with 24/7 Access via keycard

9 level parking garage housing 632 parking spaces with climate-controlled walkway



INTERIOR
PHOTOS



INSPIRATIONAL
PHOTOS



**DOWNTOWN
JACKSON
HIGHLIGHTS**



**FOR LEASING INFORMATION,
PLEASE CONTACT:**

Sam Cox • President
+601.586.3220
sam@pinpointcres.com

Disclaimer: All rights reserved. All information contained herein is from sources deemed reliable; however, no representation or warranty is made to the accuracy thereof.