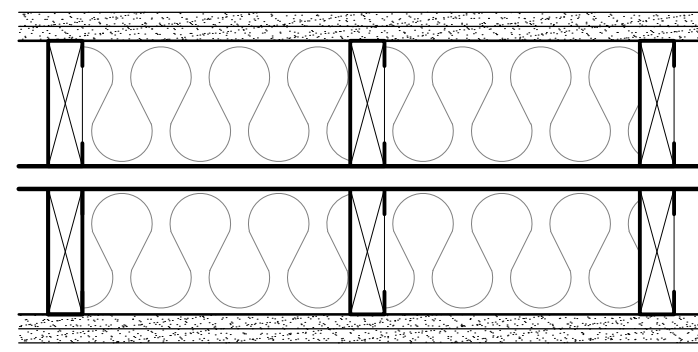


Copyright 2021, 161 Architecture, PLLC. This drawing and the design and specifications thereon are the property of 161 Architecture, PLLC. The reproduction or distribution of this drawing without written consent of 161 Architecture, PLLC is prohibited and subject to legal action. Possession of this document in any form indicates acceptance of these conditions.

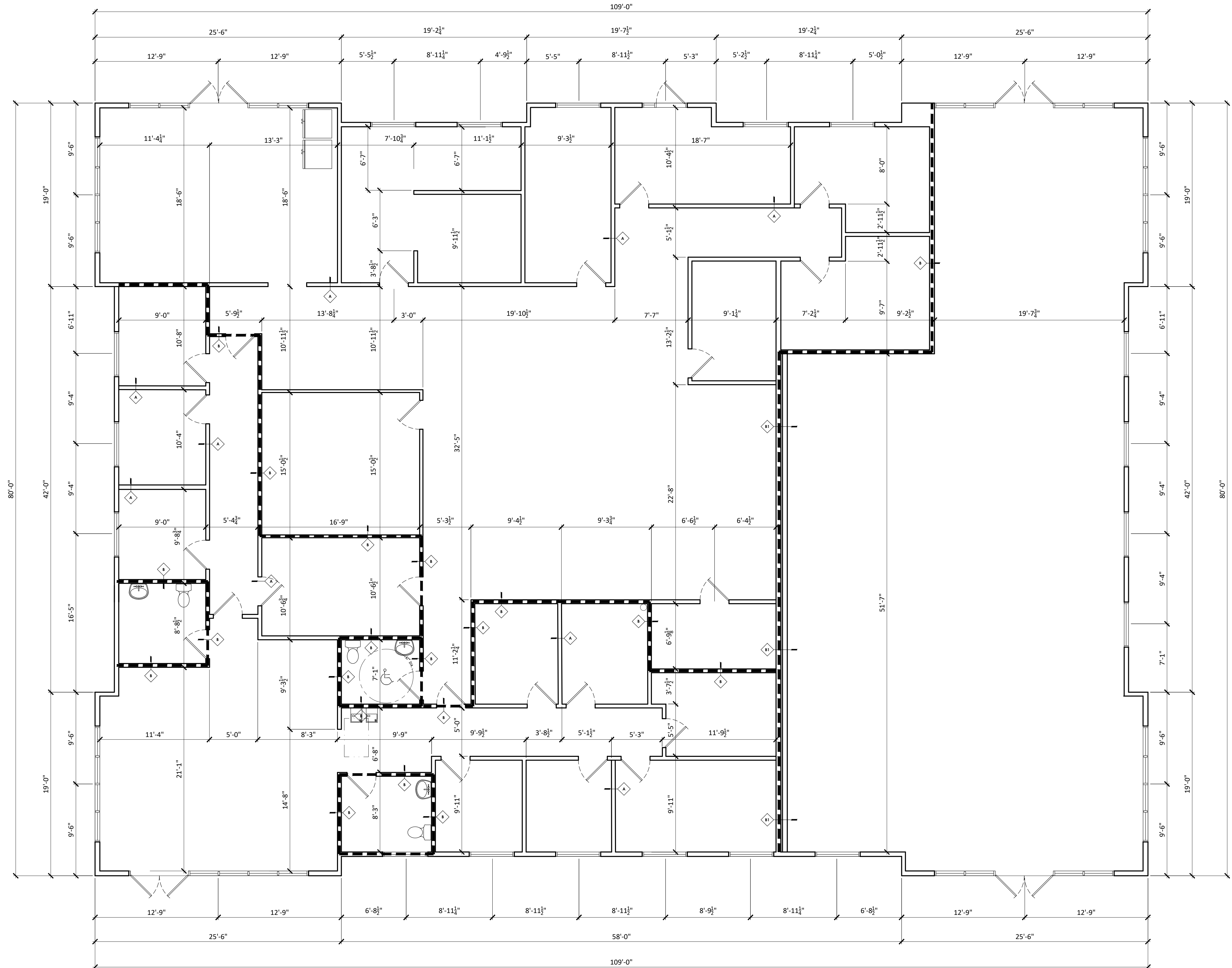


GYPSUM ASSOCIATION FILE NO. WF3370

- o (2) LAYERS 5/8" TYPE X GYPSUM WALL BOARD
- o 2x4 WOOD STUDS W SOUND BATT INSULATION
- o 2" AIR GAP
- o 2x4 WOOD STUDS W SOUND BATT INSULATION
- o (2) LAYERS 5/8" TYPE X GYPSUM WALL BOARD

NOTE:
TAPE ALL JOINTS, NAILHEADS TO BE COVERED WITH JOINT COMPOUND, & SEAL WALL PERIMETER WITH ACOUSTICAL SEALANT/CAULK

2 WALL DETAIL - 'B1' WALL



1 Dimensioned Floorplan
Scale: 3/16" = 1'-0"

Architect

161
onesixone
architecture & interiors
14316 Reese Blvd., #8-223
Huntersville, NC 28078
Telephone 704.726.6013
www.161architecture.com

Professional Seals



Project Number

2218

Set Version

Revision Record

#	Date	Description
3	05/30/24	Floorplan Changes

Project Name

Harrisburg Animal Hospital
4650 NC HWY 49 S.
Harrisburg, NC

Sheet Title

Dimensioned Floorplan

Sheet Number

A102