

FOR LEASE



# 1020 & 1030-1050 O'Brien Drive

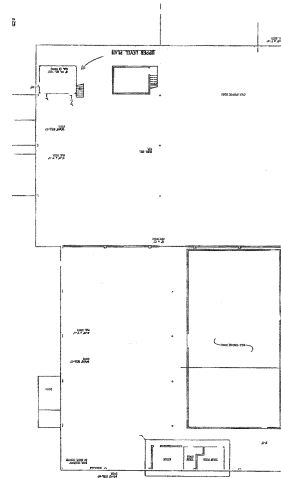
Menlo Park, CA 94025



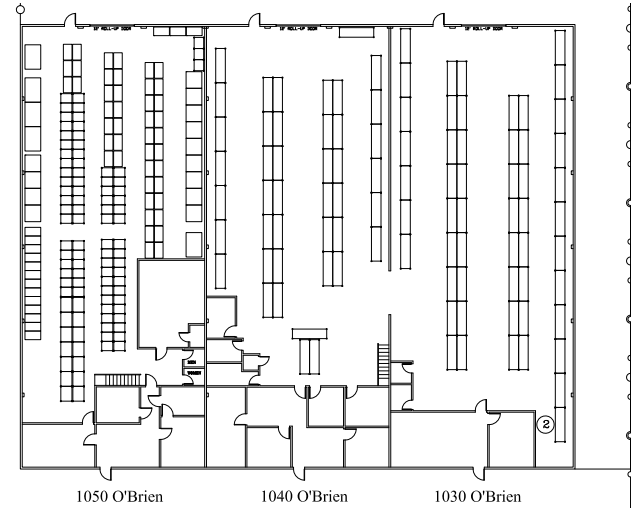
±38,000 SQUARE FEET

INDUSTRIAL WAREHOUSE WITH SECURED YARD

# FLOORPLAN | Industrial Warehouse



1020 O'BRIEN | ±20,000 SF



1030-1050 O'BRIEN | ±18,000 SF

## BUILDING HIGHLIGHTS



1020: ±20,000 SF  
1030-1050: ±18,000 SF  
**Total SF: ±38,000**



400 amps per building



1020: 1 Roll Up Door  
1030-1050: 3 Roll Up Doors



Secured Yard



3.2 miles to Downtown  
Menlo Park



Available July 1, 2024



**FOR LEASE**

# 1020 & 1030 O'Brien Drive

Menlo Park, CA 94025

## CONTACT

### SIMON CLARK

executive Vice President  
Lic. 01318652  
+1 650 577 2938  
simon.clark@cbre.com

### JAMES MARZONI

Senior Vice President  
Lic. 01248525  
+1 650 787 0798  
james.marzoni@prprop.com

**CBRE**



**PREMIER  
PROPERTIES**  
COMMERCIAL  
REAL ESTATE

© 2023 CBRE, Inc. All rights reserved. This information has been obtained from sources believed reliable but has not been verified for accuracy or completeness. CBRE, Inc. makes no guarantee, representation or warranty and accepts no responsibility or liability as to the accuracy, completeness, or reliability of the information contained herein. You should conduct a careful, independent investigation of the property and verify all information. Any reliance on this information is solely at your own risk.