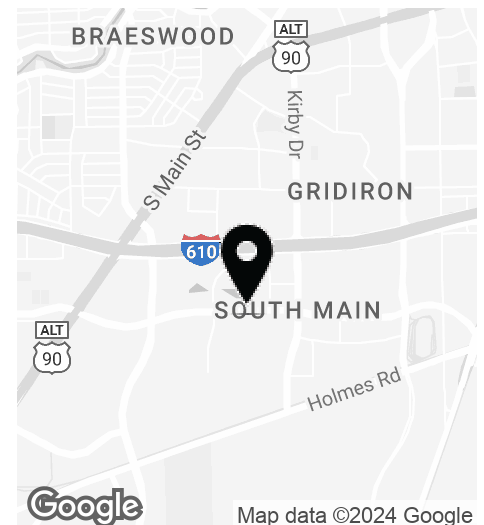




Property Description

The building is both semi dock and grade level and has 2 ramps.

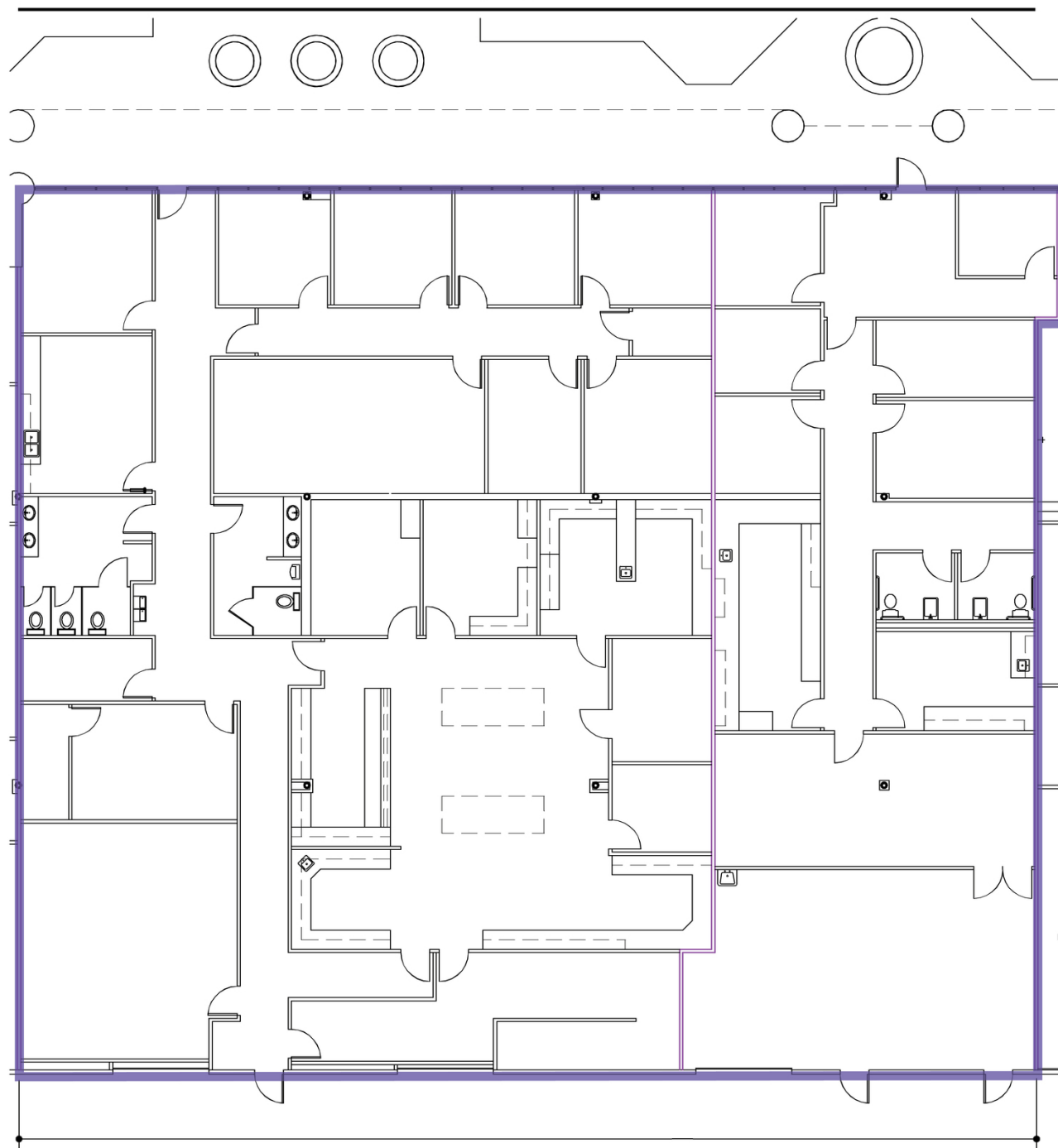
Spaces	Lease Rate	Space Size	Description
130	\$20.00 SF/yr	9,761 SF	Lab space



Get more
information

Mike Martin
Senior Vice President
D 713 209 5710
michael.martin@avisonyoung.com

Kim Shapiro
Principal
D 713 209 5940
kim.shapiro@avisonyoung.com



Suite 130



Mike Martin

Senior Vice President

D 713 209 5710

michael.martin@avisonyoung.com

Kim Shapiro

Principal

D 713 209 5940

kim.shapiro@avisonyoung.com



Mike Martin

Senior Vice President

D 713 209 5710

michael.martin@avisonyoung.com

Kim Shapiro

Principal

D 713 209 5940

kim.shapiro@avisonyoung.com

Avison Young - Downtown Houston | 1000 Main St, Suite 2400 | Houston, TX 77002

© 2024, Avison Young - Downtown Houston. Information contained herein was obtained from sources deemed reliable and, while thought to be correct, have not been verified.

Avison Young - Downtown Houston does not guarantee the accuracy or completeness of the information presented, nor assumes any responsibility or liability for any errors or omissions therein.