

1725

N. CHURCH STREET
BURLINGTON, NC

**RETAIL
FOR
LEASE**

STRATFORD PLAZA

PROPERTY HIGHLIGHTS

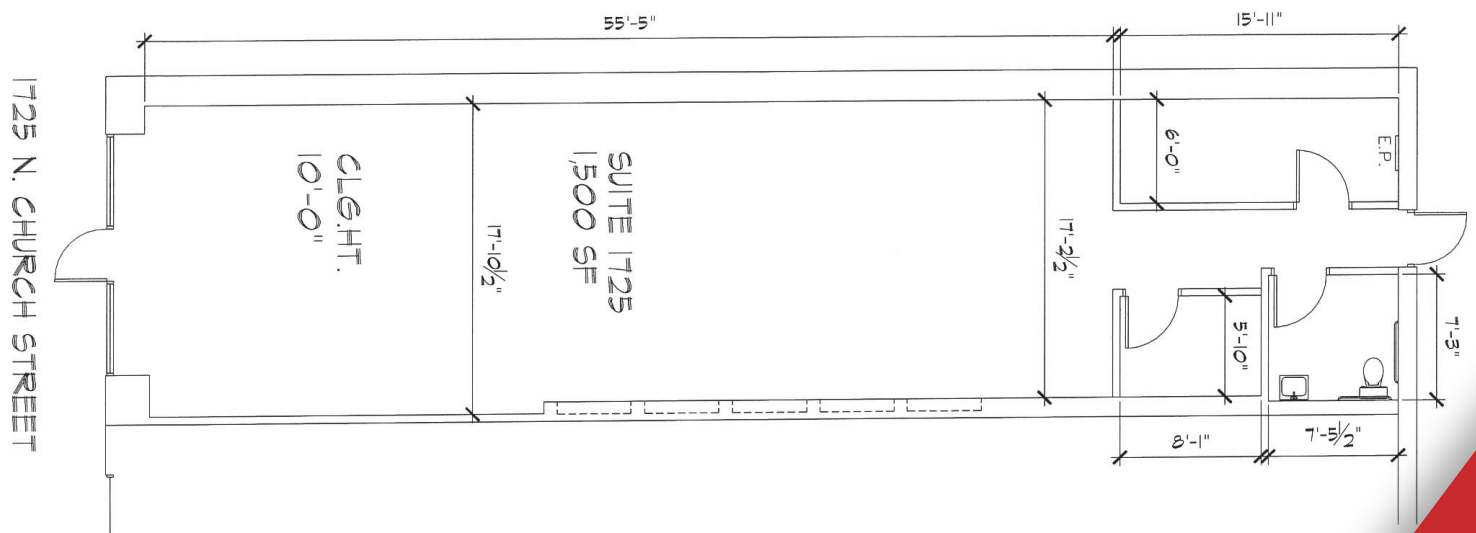
- Suite 1725: ±1,500 SF
- High traffic 20,250 SF retail center
- Located along Business 70
- Excellent visibility and signage opportunity
- Tenant mix offers great foot traffic
- Other tenants include Buddy's Home Furnishings, Mexican Restaurant, Cricket Wireless, Verizon

DEMOGRAPHICS

	1 Mile	3 Miles	5 Miles
Total Population	8,779	51,267	89,280
Total Households	3,310	20,568	35,842
Total HH Income	\$34,493	\$54,570	\$63,036

NAI Piedmont Triad
Commercial Real Estate Services, World Wide

NANCY COX
BROKER
336 686 5388
ncox@naipt.com



This material may contain content generated with AI assistance and publicly sourced data. NAI Piedmont Triad makes every effort to verify the information but makes no warranties or representations regarding the accuracy, completeness, or reliability of the information. Independent verification of all details is strongly encouraged. Prices, terms, and availability are subject to change without prior notice.

NANCY COX
BROKER
336 686 5388
ncox@naipt.com

348 N. Elm Street • Greensboro, NC 27401 • naipt.com