

The Shoppes on Rainbow

1200-1250 S Rainbow Blvd, Las Vegas, NV 89146



Jeff Valiquett
BRIVAN, LLC
9074 S 300 W, Sandy, UT 84070
jeff@brivanre.com
(801) 664-3082



The Shoppes on Rainbow

\$17.00 /SF/YR

For lease: 1,800 SF located at Rainbow Plaza Shopping Center, 1250 S. Rainbow Blvd., Las Vegas, NV 89146. Premier corner frontage with dominant signage. Features a large open showroom plus back-of-house storage. Anchored by Dollar Tree with excellent visibility along Rainbow Blvd. Traffic counts: Rainbow Blvd., 30,000–40,000 ADT; Charleston Blvd., 45,000–55,000 ADT. Total GLA: 64,610 SF. Zoning: C1/C2. Parking: 4–5/1,000 SF. Co-tenants include AutoZone and service retail. Dense surrounding residential and daytime population....

- 1,800 SF coming available July 1, 2026, in a high-traffic retail corridor.
- Anchored by Dollar Tree and AutoZone, with a strong daily customer draw.
- Excellent visibility along Rainbow Blvd.



Rental Rate:	\$17.00 /SF/YR
Property Type:	Shopping Center
Center Type:	Neighborhood Center
Stores:	9
Center Properties:	1
Frontage:	RAINBOW BLVD
Gross Leasable Area:	64,610 SF
Walk Score ©:	60 (Moderately friendly)
Transit Score ©:	40 (Fairly friendly)
Taxes:	\$0.11 USD/SF/MO
Operating Expenses:	\$0.25 USD/SF/MO
Rental Rate Mo:	\$1.42 /SF/MO

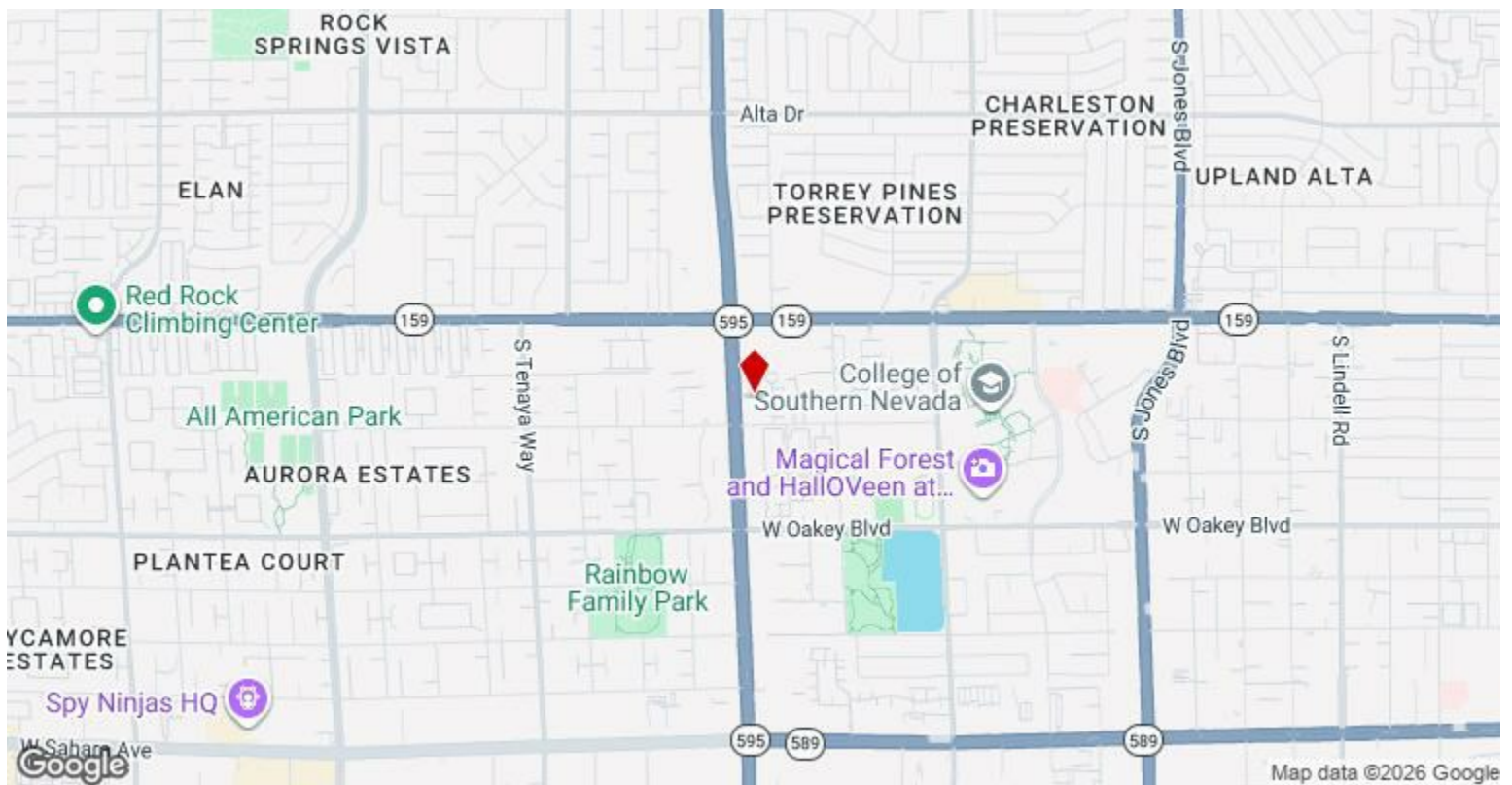
1st Floor Ste 1238

Space Available	1,800 SF
Rental Rate	\$17.00 /SF/YR
Date Available	July 01, 2026
Service Type	Triple Net (NNN)
Built Out As	Specialty
Space Type	Relet
Space Use	Retail
Lease Term	3 Years

Available July 1, 20026

Major Tenant Information

Tenant	SF Occupied	Lease Expired
AutoZone	-	
Battle Born Fencing Club	-	
Crafty Cake Shop	-	
Designs By Simmons	-	
Dollar Tree	-	
Golden Barbershop	-	
Modern Furniture	-	
Zenith Jiu Jitsu	-	
Zia Records	-	



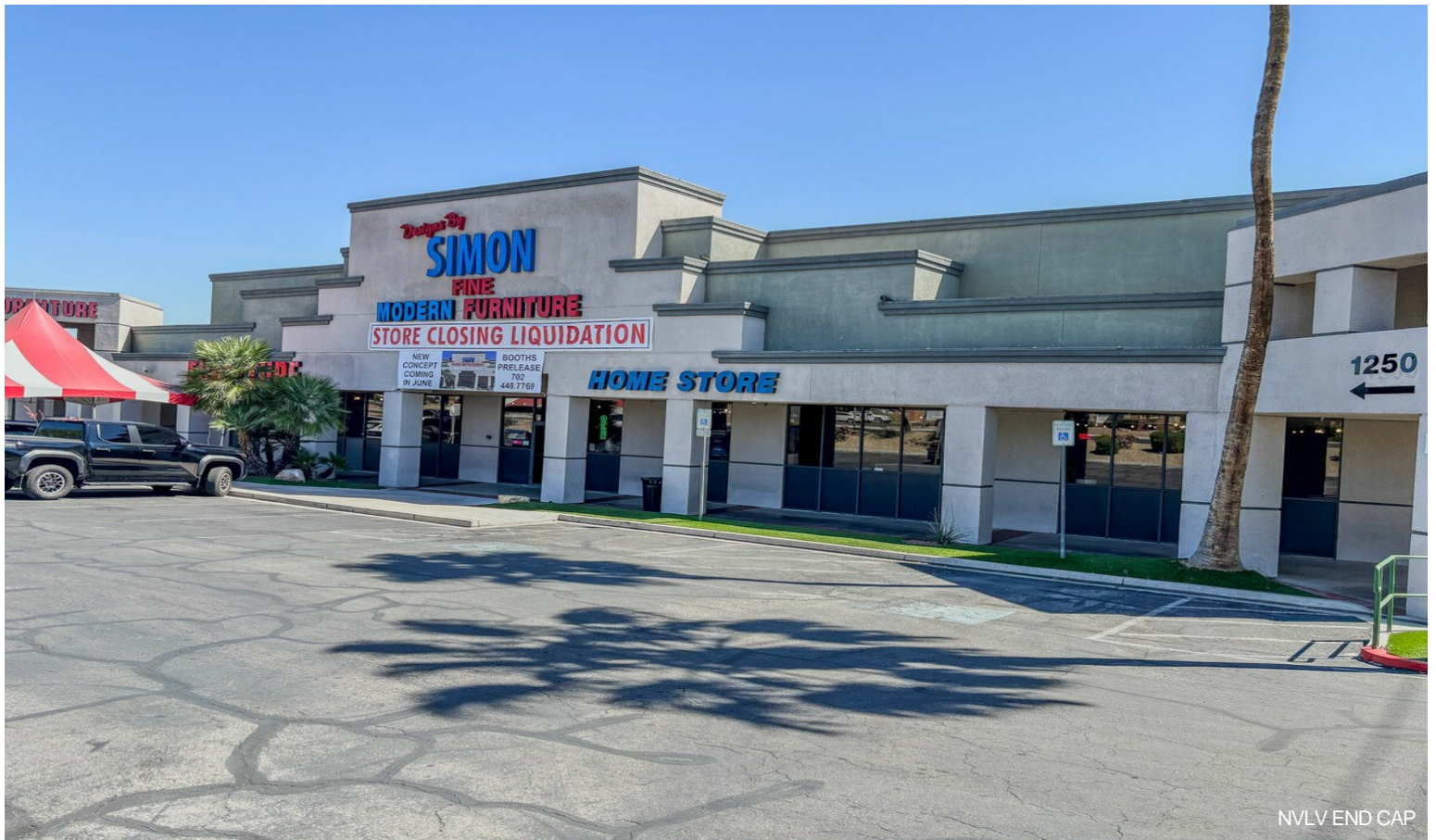
1200-1250 S Rainbow Blvd, Las Vegas, NV 89146

For lease: 1,800 SF located at Rainbow Plaza Shopping Center, 1250 S. Rainbow Blvd., Las Vegas, NV 89146. Premier corner frontage with dominant signage. Features a large open showroom plus back-of-house storage. Anchored by Dollar Tree with excellent visibility along Rainbow Blvd. Traffic counts: Rainbow Blvd., 30,000–40,000 ADT; Charleston Blvd., 45,000–55,000 ADT. Total GLA: 64,610 SF. Zoning: C1/C2. Parking: 4–5/1,000 SF. Co-tenants include AutoZone and service retail. Dense surrounding residential and daytime population.

Property Photos



NVLV_ZENITH



NVLV_END CAP