

FOR SALE

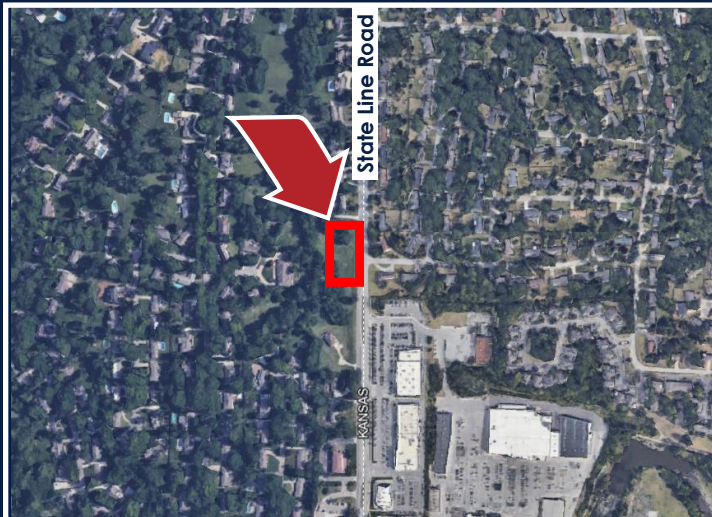
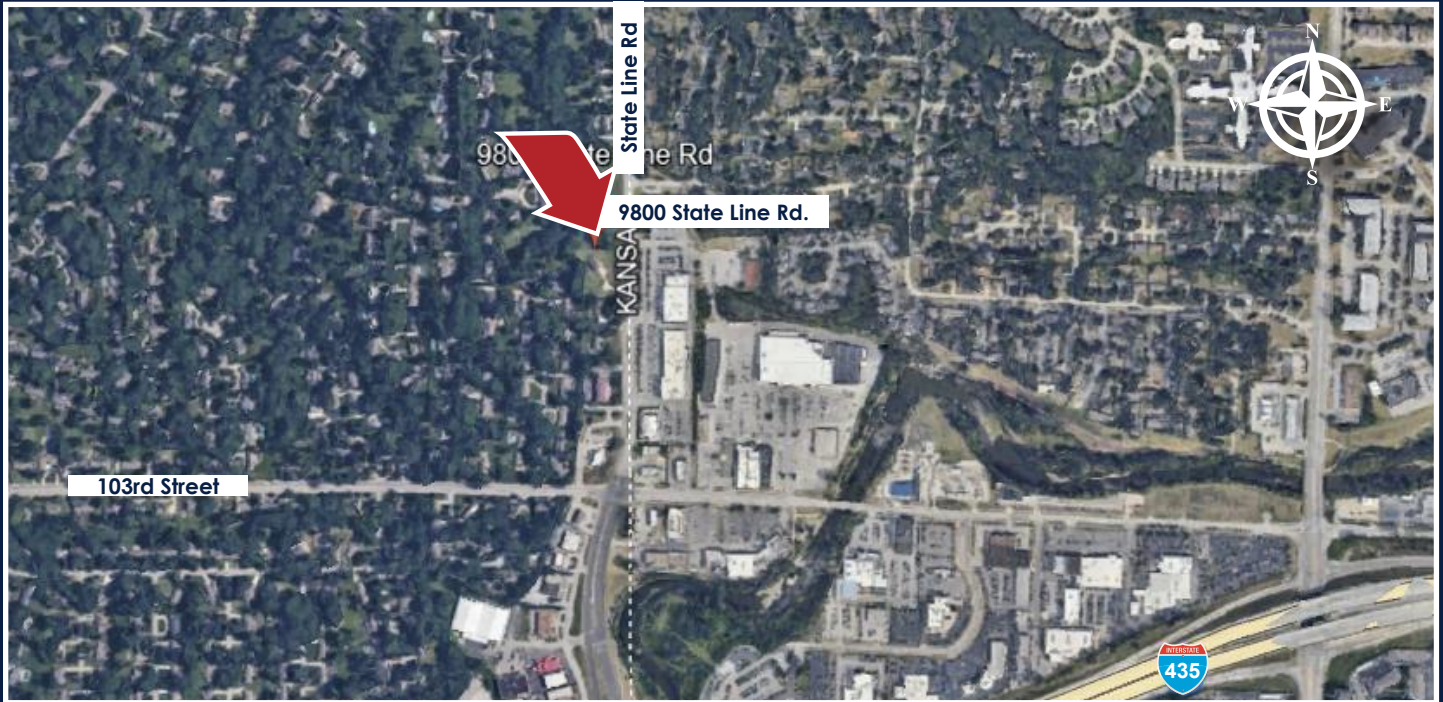
9800 State Line Road
Leawood, KS 66206

MICAH FEINGOLD

COMMERCIAL REAL ESTATE BROKER

4851 Meadowbrook Parkway #165 | Prairie Village, KS 66207

913-341-9636 | micah@micahre.com



Highlights

- ▶ 2.64-Acre Residential Property
- ▶ Residential Opportunity for Estate Lot
- ▶ May be Further Subdivided
- ▶ Rare Infill Site in Leawood
- ▶ Convenient to All Parts of the City

Call or Email for More Information

Contact: Micah Feingold

Office: 913-341-9636

Email: micah@micahre.com

Contact: David Feingold

Cell: 913-709-7130

Email: david@dylanjagger.com