

# FOR LEASE

4,152 SF AVAILABLE

## TECHNIPLEX BUSINESS CENTER

16223 PARK ROW DRIVE ▪ SUITE 175 ▪ HOUSTON, TX 77084

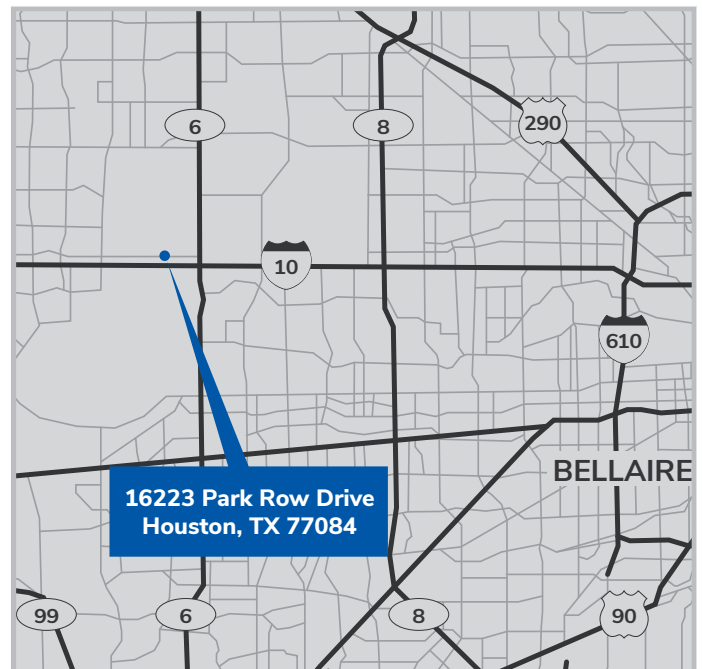


### BUILDING FEATURES

- Located in the heart of the Energy Corridor immediately off of Interstate 10 with convenient access to major thoroughfares:
  - Hwy. 6 - 1.3 miles
  - Beltway 8 - 6.5 miles
  - Grand Pkwy 99 - 7.0 miles
- Corporate appeal in a business park setting with a variety of offerings, including, flex, distribution, and lab type spaces.
- 22,695 SF total building size | Rear-load | Dock High loading

### SUITE FEATURES

- 4,152 SF total
  - 3,065 SF office
  - 1,087 SF warehouse
- 2 loading docks
- 18' clear height
- Sprinklered



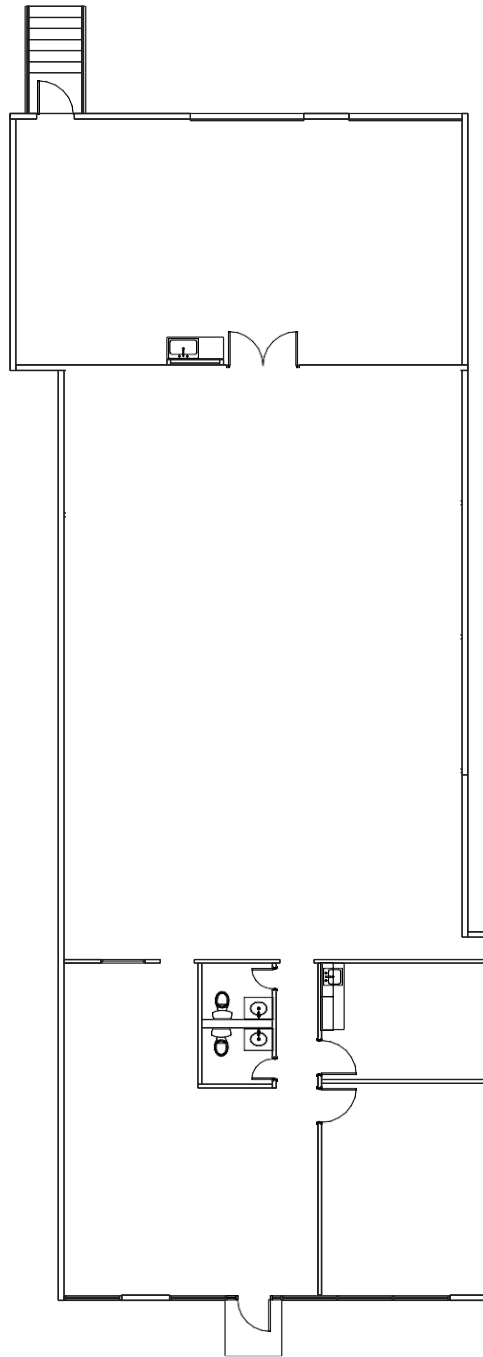
For leasing information, please contact Stream Realty Partners  
WILLIAM CARPENTER | 713.300.8891 | [william.carpenter@streamrealty.com](mailto:william.carpenter@streamrealty.com)  
MEG ZSCHAPPEL | 713.300.0284 | [meg.zschappel@streamrealty.com](mailto:meg.zschappel@streamrealty.com)

# FOR LEASE

4,152 SF AVAILABLE

## TECHNIPLEX BUSINESS CENTER

16223 PARK ROW DRIVE ▪ SUITE 175 ▪ HOUSTON, TX 77084



For leasing information, please contact Stream Realty Partners  
WILLIAM CARPENTER | 713.300.8891 | [william.carpenter@streamrealty.com](mailto:william.carpenter@streamrealty.com)  
MEG ZSCHAPPEL | 713.300.0284 | [meg.zschappel@streamrealty.com](mailto:meg.zschappel@streamrealty.com)