

401 W SULLIVAN DR

VERNON HILLS, IL 60061

LM
Lagestee-Mulder
Commercial Real Estate

OFFICE BUILDING FOR SALE AND LEASE



PROPERTY HIGHLIGHTS

- Well maintained single tenant building
- Heated garage/warehouse with six drive in doors
- Parking for 97 cars
- 1.97 Acre lot
- Great location with 200 feet of frontage along Route 45
- Zoned OR & D - Office Research and Development

DEMOGRAPHICS

	1 MILE	3 MILES	5 MILES
Total Households	3,061	22,616	52,153
Total Population	8,415	64,924	148,565
Average HH Income	\$106,158	\$123,140	\$125,938

SALE PRICE **\$1,800,000**

LEASE PRICE **\$14.00 SF GROSS**

OFFERING SUMMARY

Building Size: 11,762 SF

Lot Size: 1.97 Acres

Year Built: 1985

County: Lake

Price / SF: \$153.04

MARTHA WINTER

Senior Vice President
630.560.2902
MARTHA@LMTEAM.COM

Office Address: 361 S. Frontage Rd,
Suite 126
Burr Ridge, IL 60527
630.325.8338
LMTEAM.COM

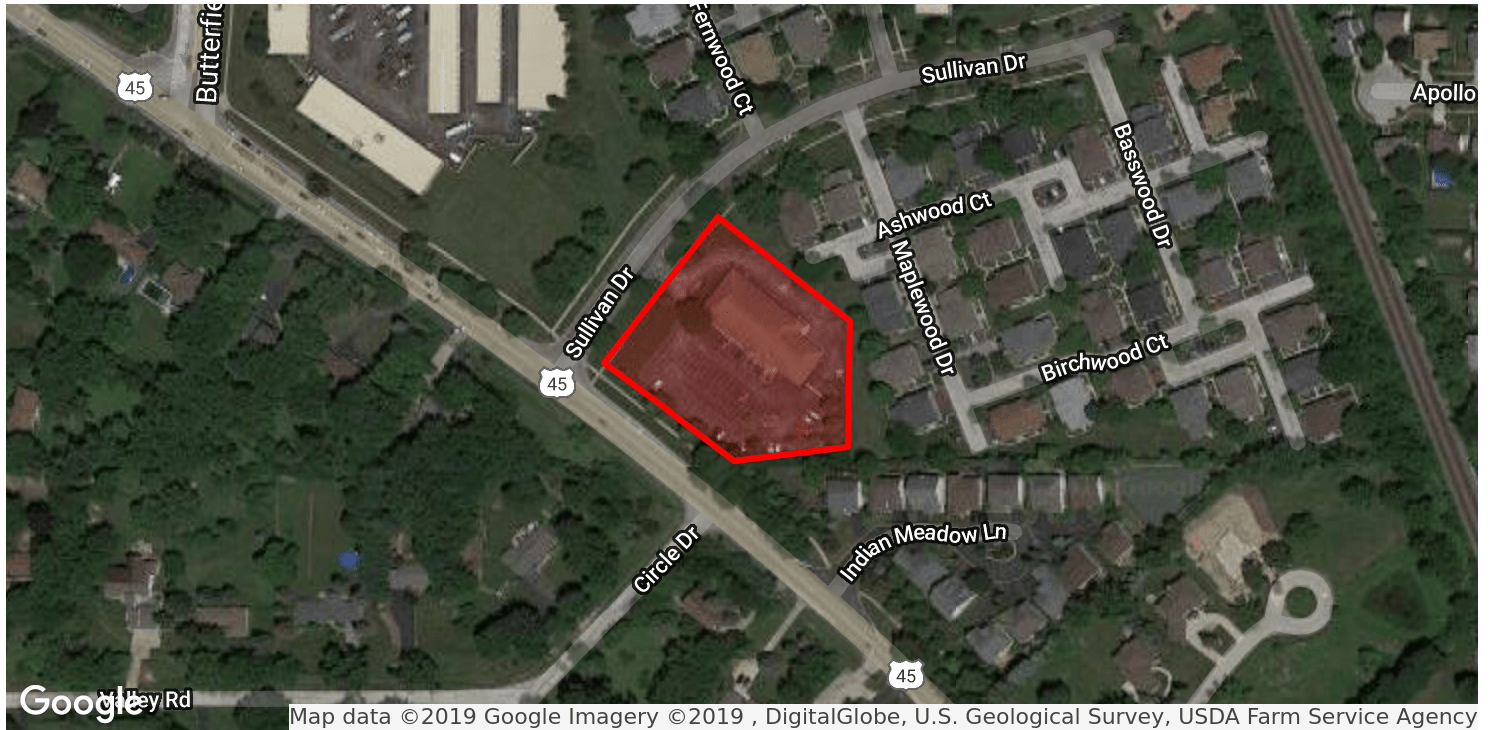
Notice: Unless a Consent to Dual Agency has been signed by both parties to a transaction for this property Martha Winter represent(s) the Seller only, and not the Buyer.

401 W SULLIVAN DR

VERNON HILLS, IL 60061

LM
Lagestee-Mulder
Commercial Real Estate

OFFICE BUILDING FOR SALE AND LEASE



Map data ©2019 Google Imagery ©2019 , DigitalGlobe, U.S. Geological Survey, USDA Farm Service Agency



Map data ©2019

MARTHA WINTER

Senior Vice President

630.560.2902

MARTHA@LMTEAM.COM

Office Address: 361 S. Frontage Rd,
Suite 126

Burr Ridge, IL 60527

630.325.8338

LMTEAM.COM

Notice: Unless a Consent to Dual Agency has been signed by both parties to a transaction for this property Martha Winter represent(s) the Seller only, and not the Buyer.