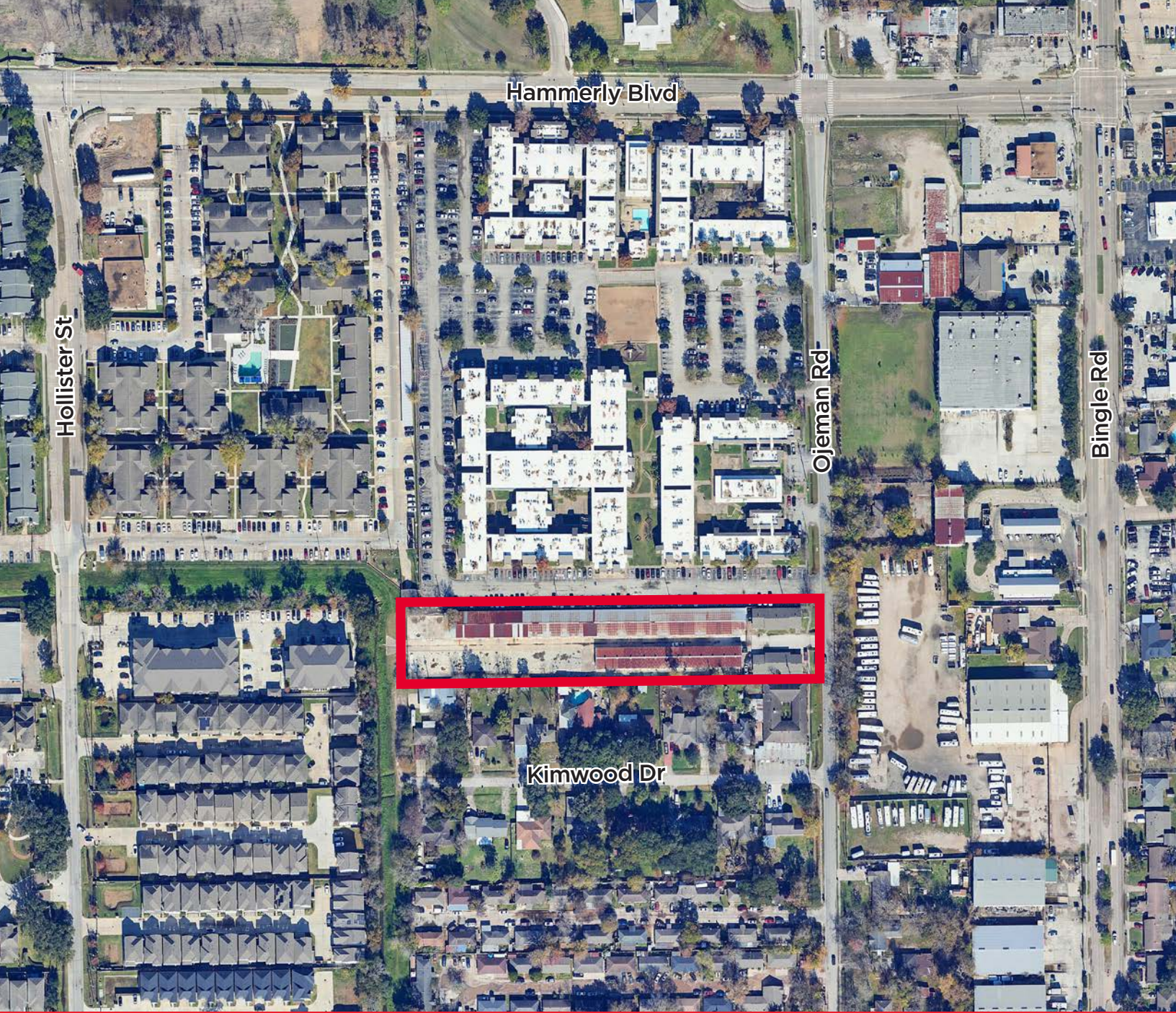


±1.83 Acres
1955 Ojeman Rd
Houston, TX



KRISTEN MCDADE
Managing Director
T: +1 713 331 1796
kristen.mcdade@cushwake.com

MATTHEW DAVIS
Senior Director
T: +1 713 331 1798
matthew.davis@cushwake.com

CHARLIE MCGAHREN
Associate
T: +1 713 331 1772
charlie.mcgahren@cushwake.com



±1.83 Acres

1955 Ojeman Rd
Houston, TX

Edgewood
Elementary

Spring Branch Hike & Bike Trail

SBISD Transition
School

Cedar Brook
Elementary

Hammerly Blvd

Subject

Schwartz
Park

Landrum
Middle The Lion
Lane School

Ridgecrest
Elementary

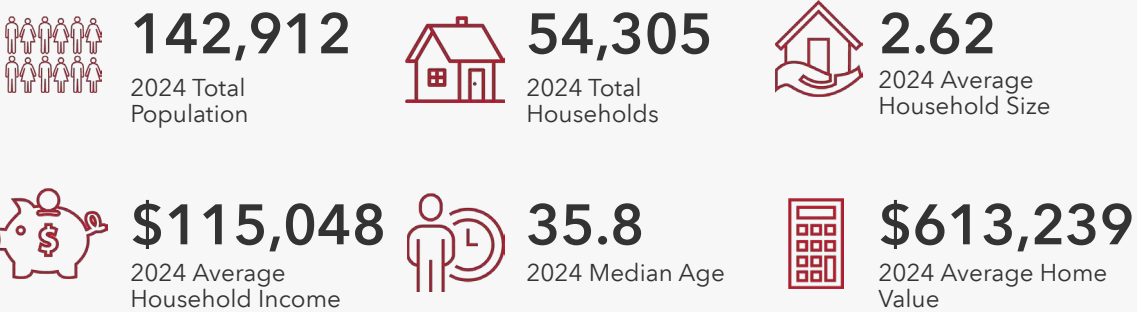
Wirt Rd

Long Point Rd

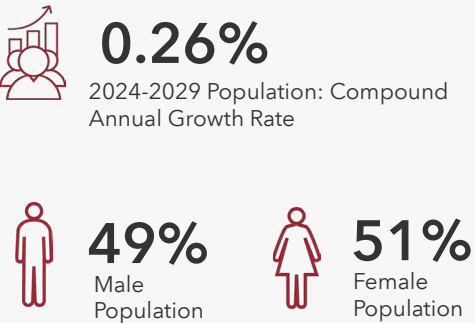
DEMOGRAPHICS

3 MILES

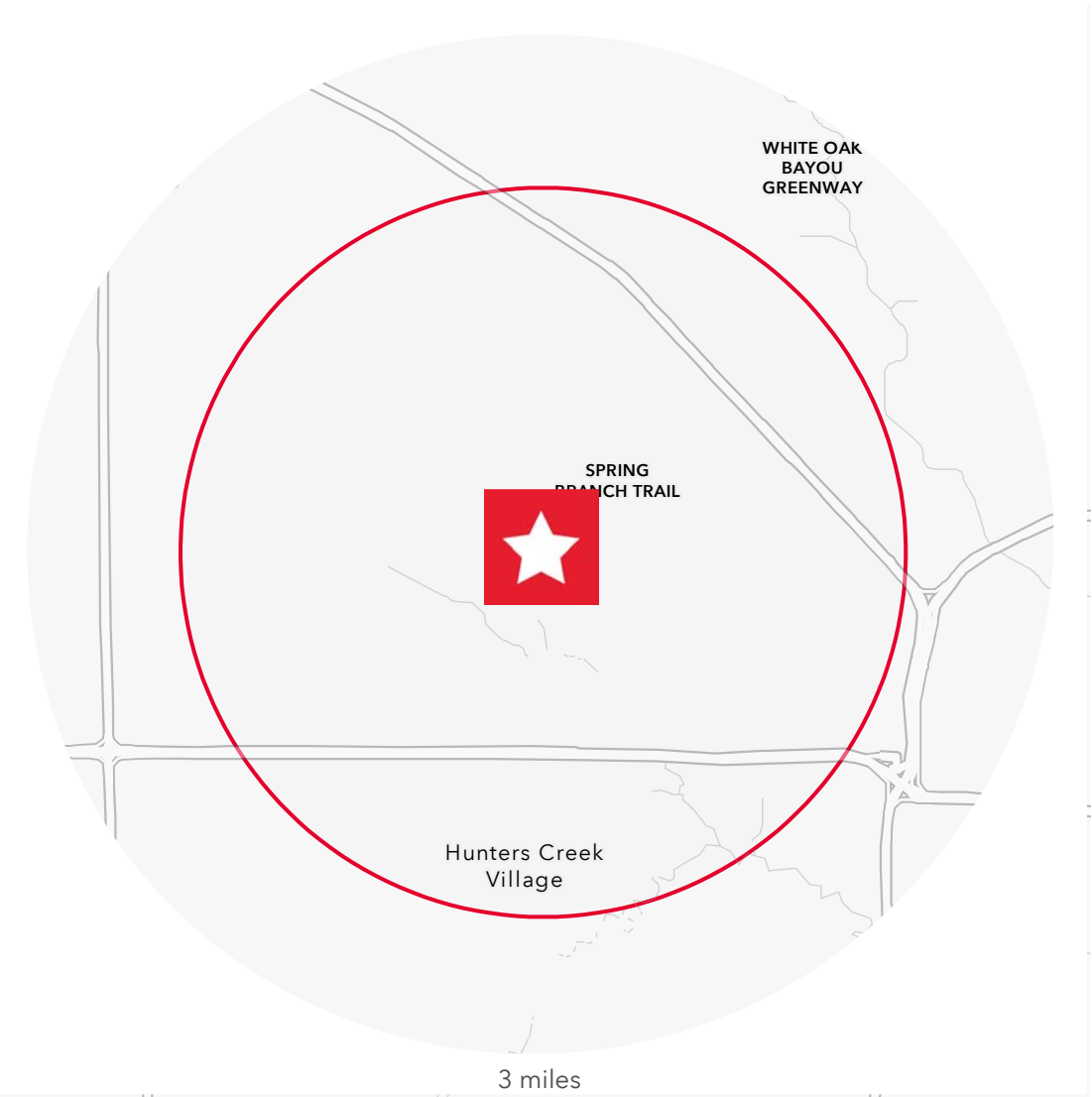
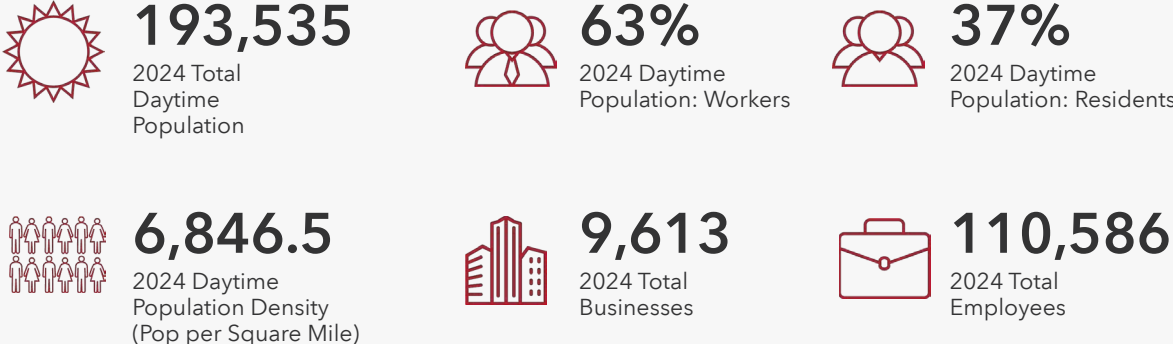
HOUSEHOLDS



POPULATION



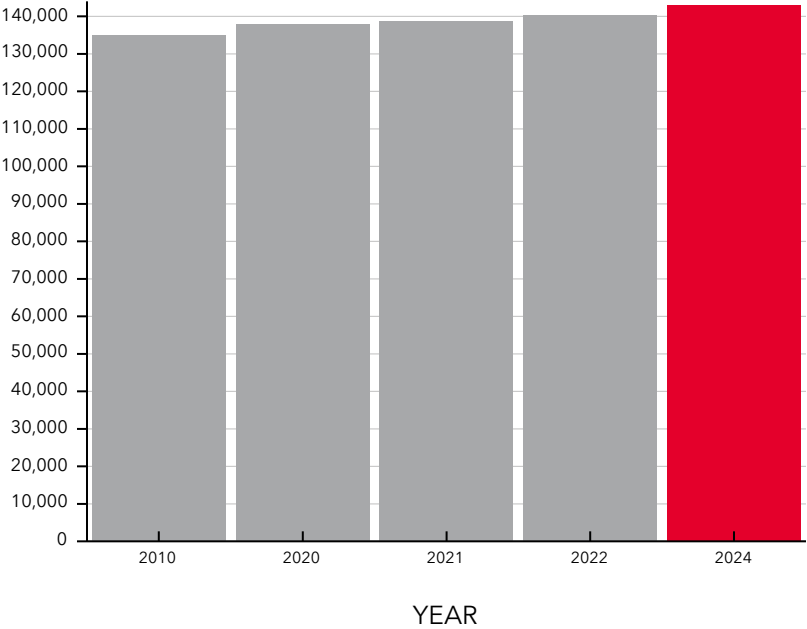
EMPLOYMENT



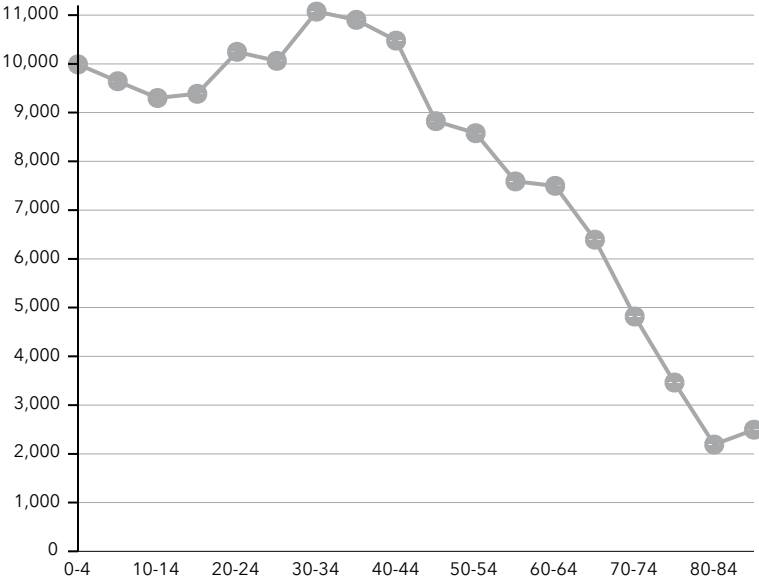
EDUCATIONAL ATTAINMENT



POPULATION TIME SERIES 2010-2024

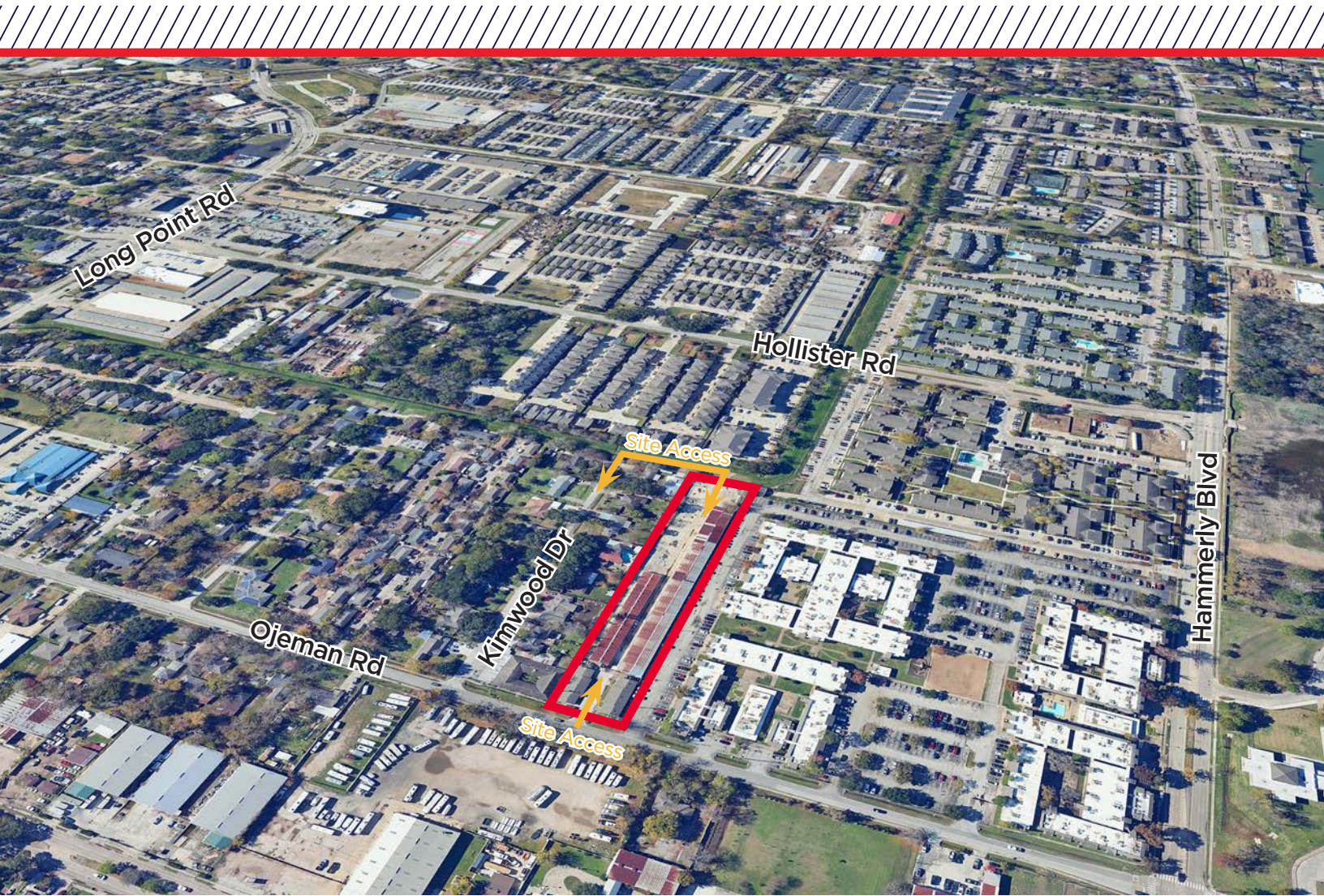


POPULATION BY AGE GROUP



±1.83 Acres

1955 Ojeman Rd
Houston, TX



±1.83 Acres of land, including 4 apartment units and a self storage facility located at 1955 Ojeman Rd. The site is located in the Spring Branch Independent School District, which is renowned for its commitment to academic excellence and fostering a supportive learning environment. With a diverse student body and innovative programs, the district ensures each student is equipped with the skills and knowledge needed for future success. The dedicated educators and community partnerships create a nurturing atmosphere that encourages both personal and academic growth.

- Unrestricted
- Not located in the floodplain
- Utilities Available
- 141' of frontage on Ojeman
- Contact Broker for Pricing

KRISTEN MCDADE

Managing Director

T: +1 713 331 1796

kristen.mcdade@cushwake.com

MATTHEW DAVIS

Senior Director

T: +1 713 331 1798

matthew.davis@cushwake.com

CHARLIE MCGAHREN

Associate

T: +1 713 331 1772

charlie.mcgahren@cushwake.com



**CUSHMAN &
WAKEFIELD**