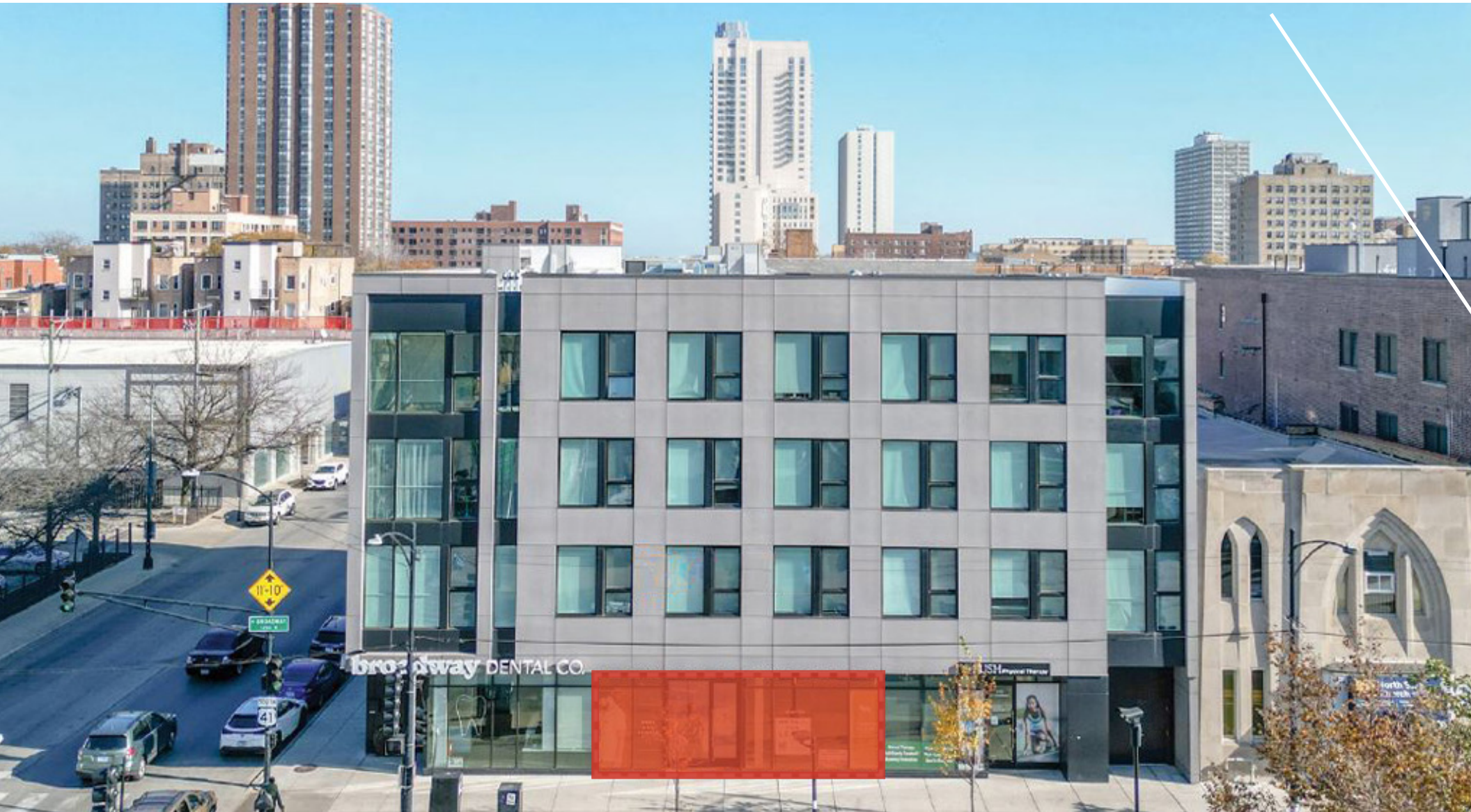


THE JUNE 5155 NORTH BROADWAY

uptown/edgewater / chicago, il



URBAN RETAIL AT THE BASE OF
MULTI-FAMILY DEVELOPMENT



THE JUNE 5155 NORTH BROADWAY

uptown/edgewater / chicago, il

SPACE DETAILS

ADDRESS

5155 N Broadway
Chicago, Illinois 60640

NEIGHBORING RETAILERS

 Burlington



 MARIANO'S

 **broadway**
DENTAL CO.

 RUSH
Physical Therapy

 BY Byline Bank

 BANK OF AMERICA

AVAILABILITY

1,857 SF

FEATURES

Located on the Broadway corridor on the Uptown and Edgewater border

Final retail vacancy at The June (27 Units), a new multifamily development with medical co-tenancy

Parking available 0.1 miles away in the 5051 Broadway parking garage

28'+ frontage along Broadway and 13'+ ceiling heights

One block south of the newly renovated Berwyn CTA Red Line Station (Annual Ridership - 1.013M)

½ Mile off of Jean Baptiste Pointe DuSable Lake Shore Drive (70,200 VPD)

Adjacent to Broadway and Berwyn Shopping Center Redevelopment

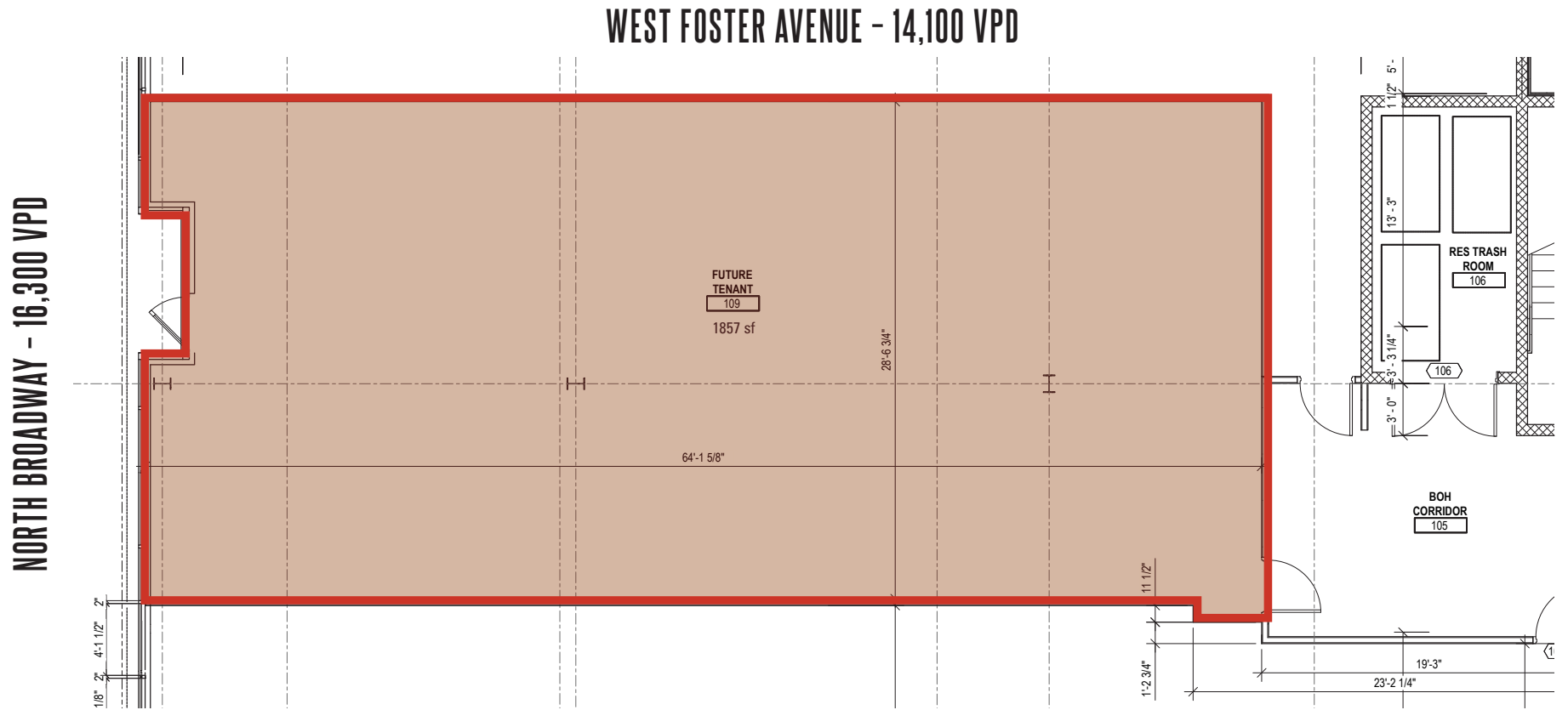
DEMOGRAPHICS

	0.5 Miles	1 Miles	1.5 Miles
POPULATION	28,467	78,425	135,371
HOUSEHOLDS	16,922	44,218	74,139
AVG HOUSEHOLD INCOME	\$96,106	\$99,985	\$106,291
DAYTIME POPULATION	20,225	57,126	95,075

THE JUNE 5155 NORTH BROADWAY

uptown/edgewater / chicago, il

RETAIL SITE PLAN



SITE DETAILS

1,857 SF

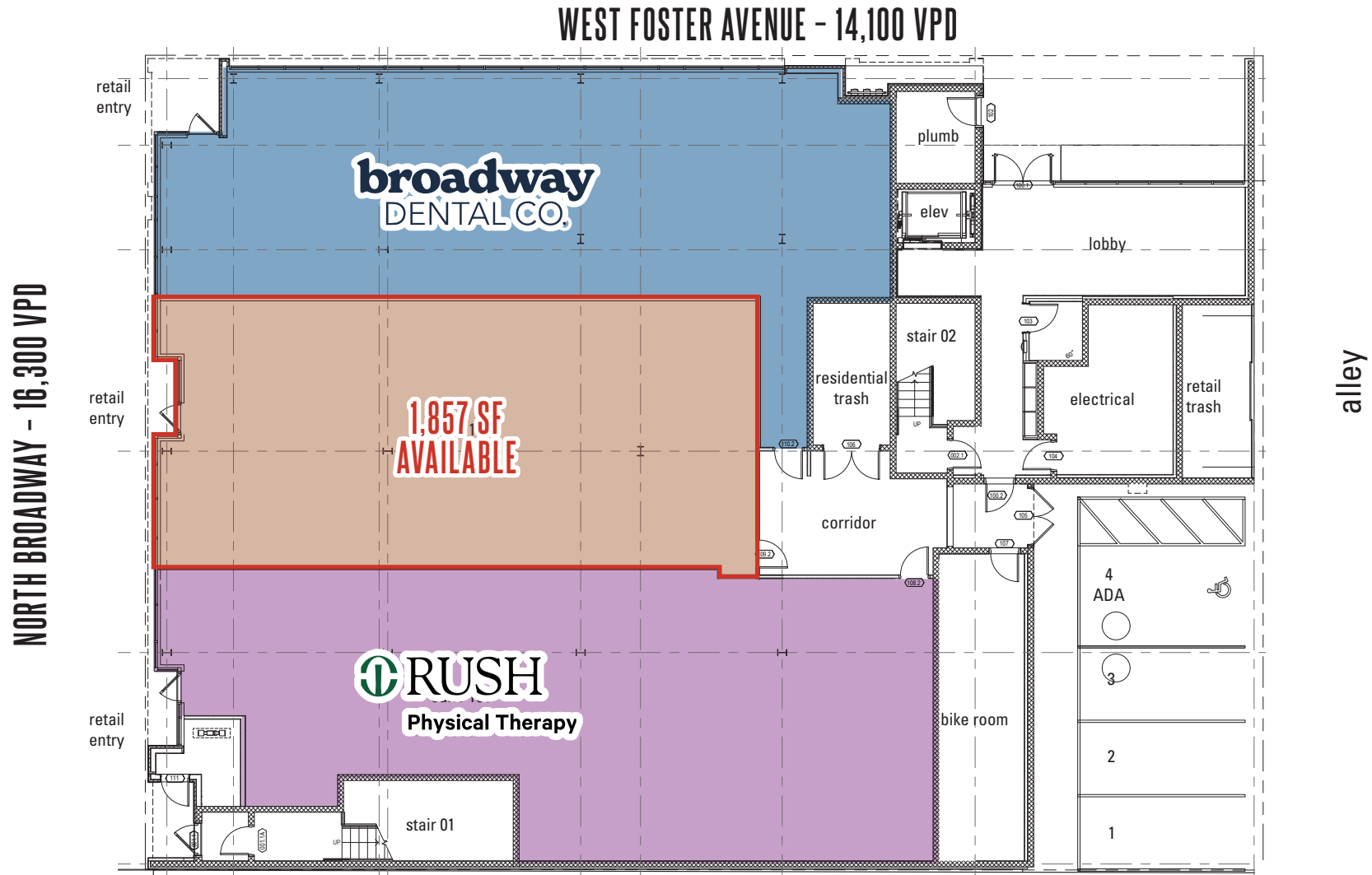
N



THE JUNE 5155 NORTH BROADWAY

uptown/edgewater / chicago, il

GROUND LEVEL RETAIL SITE PLAN



THE JUNE 5155 NORTH BROADWAY

uptown/edgewater / chicago, il

AREA RETAIL MAP



BROADWAY FESTIVAL

- Advocate Medical Group
- greenercleaner
- SUBWAY
- BANK OF AMERICA
- Chicago Public Schools
- Panera

PETA SMART

MATTRESS FIRM

CHIPOTLE

NorthShore
University HealthSystem
IMMEDIATE CARE

STARBUCKS

STATION IS TEMPORARILY CLOSED

5155 NORTH BROADWAY



let's
talk. **BIG**
IDEAS?

PAUL BRYANT

Mid-America Real Estate Corporation
630.954.7354
PBryant@MidAmericaGrp.com

WESTIN KANE

Mid-America Real Estate Corporation
630.954.7447
WKane@MidAmericaGrp.com

RYAN HICKS

Mid-America Real Estate Corporation
630.945.7326
RHicks@MidAmericaGrp.com



MID-AMERICA[®] URBAN