

**FOR LEASE**

7640 Matoaka Rd Unit C,  
Sarasota, FL 34243



**RICHARDSON  
KLEIBER  
WALTER**

**KLEIBER BUTTON INC.**

Lic Real Estate Broker

**6,000 SF Office/Warehouse with Paved Parking Lot  
And 3 Phase Power**

# INFORMATION SUMMARY



6000 SF



2 Overhead  
Doors



New Parking  
Lot

Small office, large open warehouse with 3 phase power and two 12' x 14' doors. Landlord may consider enlarging the office and/or installing AC in the warehouse. Well-maintained facility. Building Exterior recently painted. Parking lot recently sealed. Plans for additional improvements in 2024. Convenient location just east of US 301. Minutes to Downtown Sarasota, Downtown Bradenton, SR 70, University Parkway and I-75.



Jeff Button Phone: 941-313-1193 Email: [Jeff@SarasotaWarehouses.com](mailto:Jeff@SarasotaWarehouses.com)

# For Lease

\$18.00 Annual / SF  
Gross



Total Available - 6000 SF

- 3 Phase Power
- 2 Loading Doors, 1 Back Roll up door for ventilation
- Newly Sealed Parking Lot
- Plans for additional improvements In 2024

Address – 7640 Matoaka Rd Sarasota, FL 34243

County – Sarasota

Subtype – Manufacturing, Flex, Distribution,  
Warehouse

Zoning – Light Manufacturing

Parcels – 19728.1035/0

Sprinklers – Yes

Jeff Button    Phone: 941-313-1193    Email: [Jeff@SarasotaWarehouses.com](mailto:Jeff@SarasotaWarehouses.com)

# AERIAL PHOTO

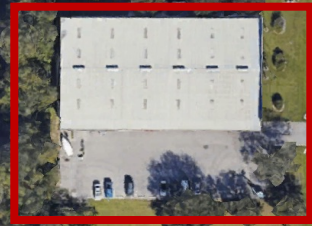


Jeff Button Phone: 941-313-1193 Email: [Jeff@sarasotawarehouses.com](mailto:Jeff@sarasotawarehouses.com)

# AERIAL PHOTO

S-301

Tallevast Rd



# ADDITIONAL PHOTOS

