

For Sale

Owner-User Flex/Retail Opportunity



1030 E. 4th St.
Reno, NV 89512

Greg Ruzzine, CCIM
Partner
775.450.5779
gruzzine@logicCRE.com
BS.0145435

Ian Cochran, CCIM
Partner
775.225.0826
icochran@logicCRE.com
B.0145434.LLC

Sam Meredith
Senior Associate
775.737.2939
smeredith@logicCRE.com
S.0189257

Listing Snapshot



\$1,299,000
Asking Price



± 5,000 SF
Total Square Footage



± 0.22 AC
Total Acreage

Property Highlights

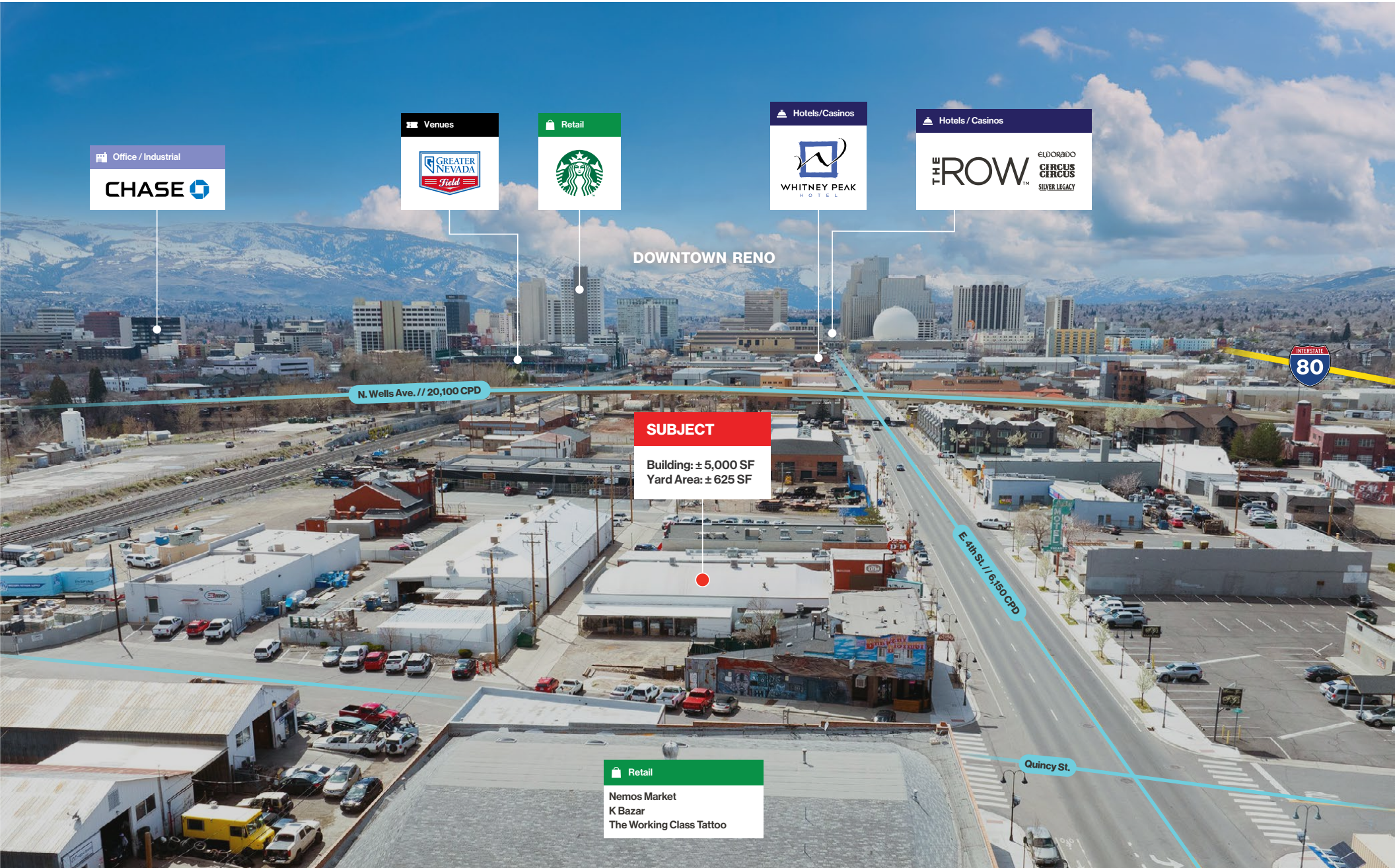
- Flex/retail owner-user opportunity with frontage along E. 4th St.
- On-site parking along the north side of the building plus additional parking along E. 4th St.
- ± 625 SF secured outdoor storage area with roof enclosure
- 15' clear height in warehouse area
- Three (3) swamp coolers and three (3) Reznor heaters
- 200A; 240V; 3-phase power
- One (1) 12' x 12' roll-up door along the south side of the building

Demographics

	1-mile	3-mile	5-mile
2023 Population	19,481	137,570	260,850
2023 Average Household Income	\$58,473	\$74,554	\$89,503
2023 Total Households	9,343	58,771	107,292







Office / Industrial

CHASE

Venues

GREATER NEVADA Field

Retail

Starbucks

Hotels/Casinos

WHITNEY PEAK HOTEL

Hotels/Casinos

THE THROW ELDERADO CIRCUS SILVER LEGACY

DOWNTOWN RENO

N. Wells Ave. // 20,100 CPD

SUBJECT

Building: ± 5,000 SF
Yard Area: ± 625 SF

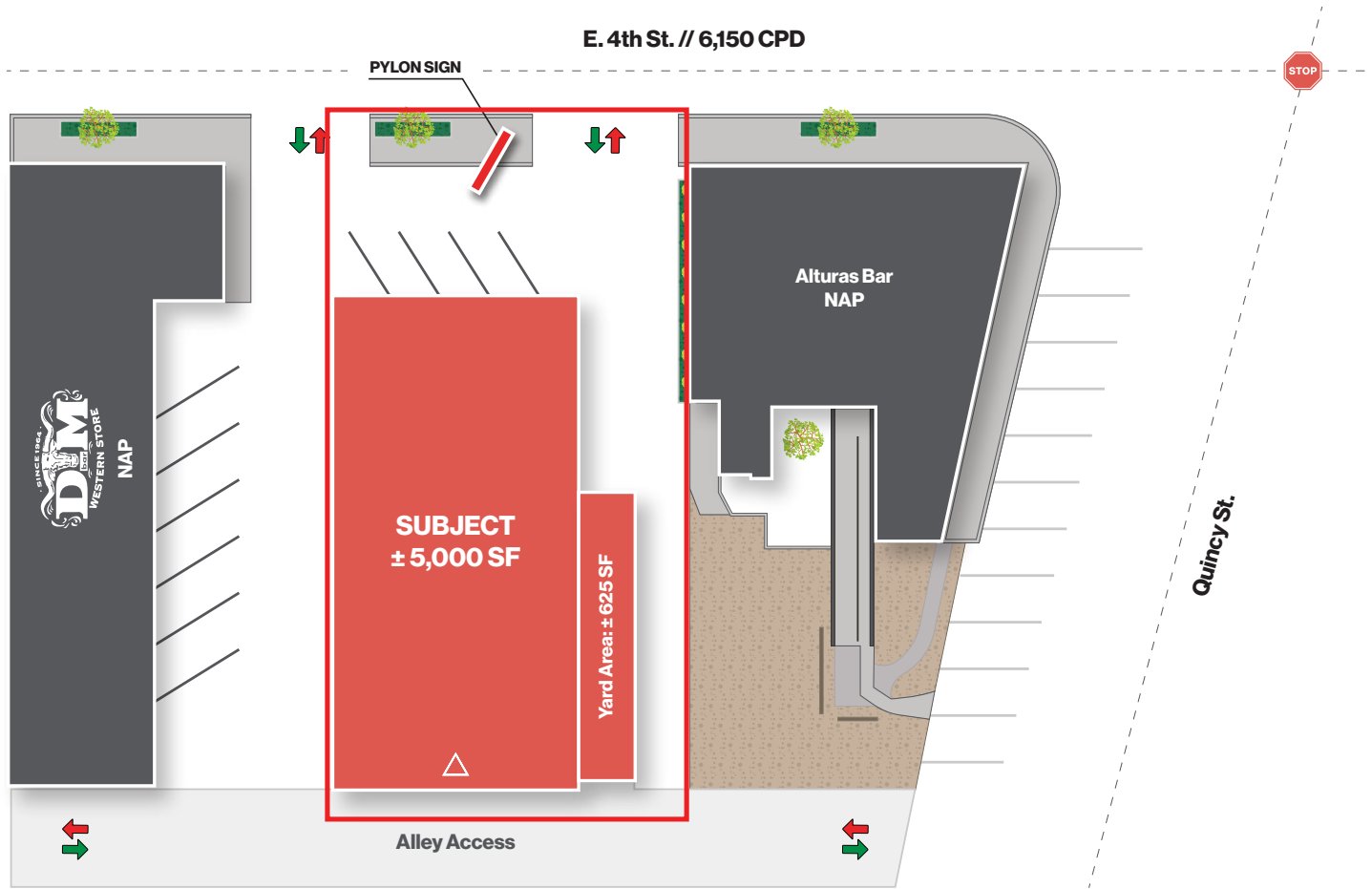
E 4th St. // 6,150 CPD



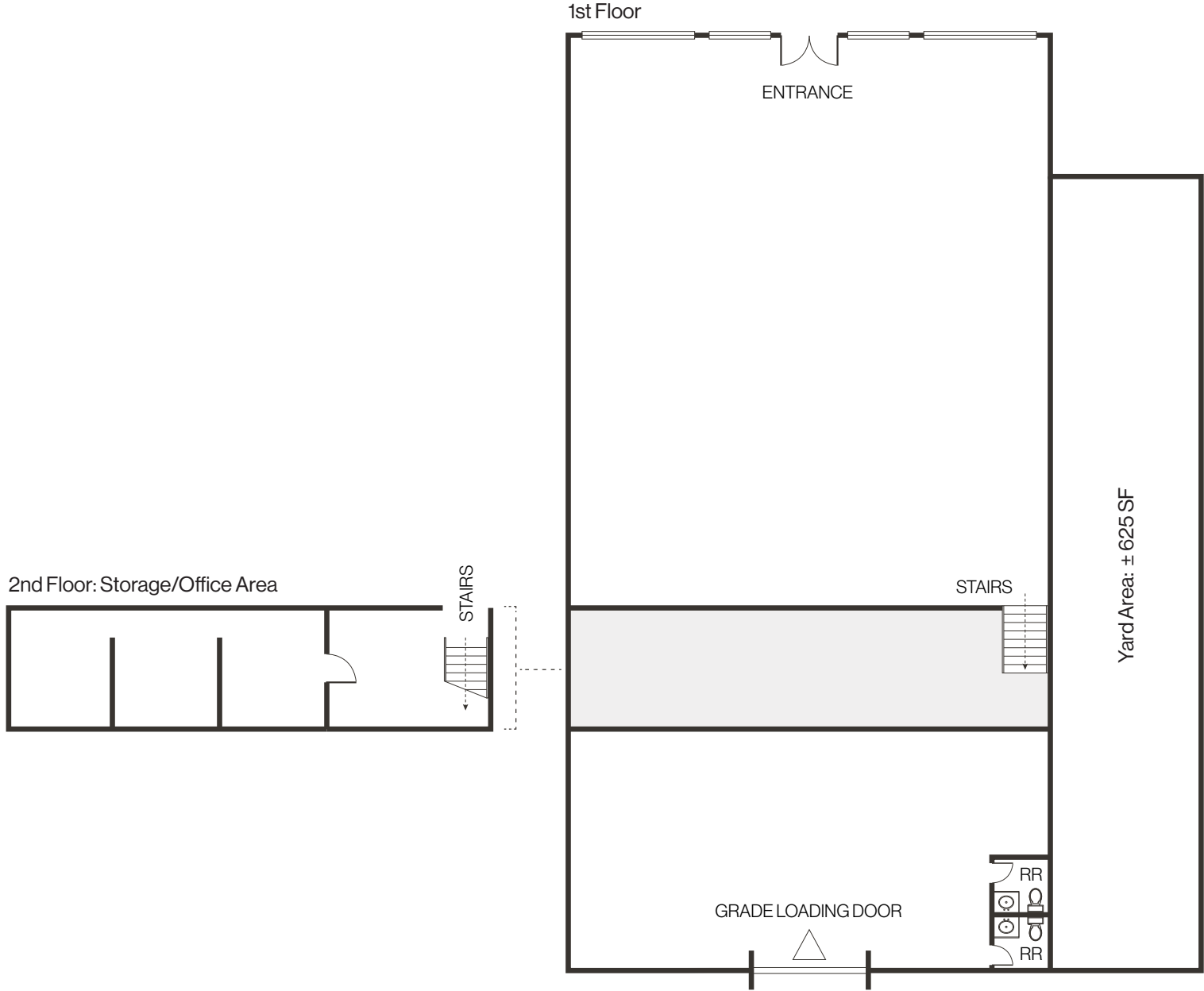
Retail

Nemos Market
K Bazar
The Working Class Tattoo

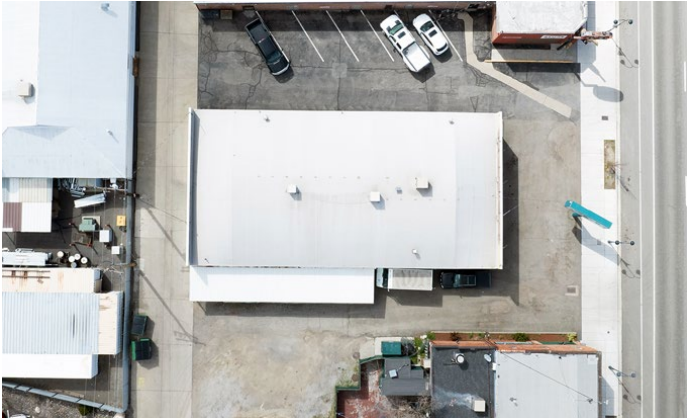
Quincy St.



Floor Plan | ± 5,000 SF



Property Photos



LOGIC Commercial Real Estate

Specializing in Brokerage and Receivership Services



Join our email list and
connect with us on LinkedIn

The information herein was obtained from sources deemed reliable; however LOGIC Commercial Real Estate makes no guarantees, warranties or representation as to the completeness or accuracy thereof.

For inquiries please reach out to our team.

Greg Ruzzine, CCIM

Partner
775.450.5779
gruzzine@logicCRE.com
BS.0145435

Ian Cochran, CCIM

Partner
775.225.0826
icochran@logicCRE.com
B.0145434.LLC

Sam Meredith

Senior Associate
775.737.2939
smeredith@logicCRE.com
S.0189257