



# OFFICE CONDO FOR LEASE OR SALE

6412 SOUTH 900 EAST, MURRAY, UT 84121

**LEASE RATE: REDUCED TO \$17.75 PSF FS**

**SALE PRICE: REDUCED TO \$795,000.00!**



## PROPERTY INFORMATION

- ☑ Available: 3,384 Sq. Ft.
- ☑ Top Floor Office Suite
- ☑ Signage Available
- ☑ Parcel Size: 0.65 Acres
- ☑ Zoning: CC
- ☑ Tons Of Extra Storage
- ☑ Year Built: 2007
- ☑ Strong Traffic Counts Along 900 East
- ☑ Established Retail & Residential Trade Area
- ☑ Across From Wheeler Farm
- ☑ Six (6) Private Offices
- ☑ Private Bathroom
- ☑ Break Room
- ☑ Private Entrance

## CONTACT US

**CHRIS LORENZON**

✉ [chris@cresutah.com](mailto:chris@cresutah.com)

☎ 801.652.2798

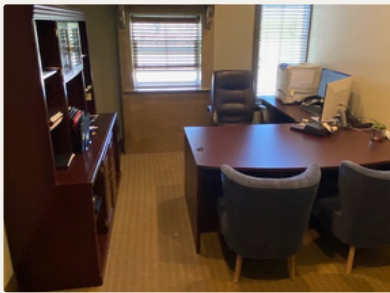
🌐 [www.cresutah.com](http://www.cresutah.com)

Call Us   
**801.876.6070**



# OFFICE CONDO FOR LEASE OR SALE

6412 SOUTH 900 EAST, MURRAY, UT 84121



This information is given with the understanding that all negotiations and/or real estate activity related to the property described above shall be conducted through this CRES office. The above information while not guaranteed, was obtained from sources we believe to be reliable.

**CONTACT US**

Call Us  
**801.876.6070**

**CHRIS LORENZON**

[chris@cresutah.com](mailto:chris@cresutah.com)

801.652.2798

[www.cresutah.com](http://www.cresutah.com)