

715 N. HUDSON AVENUE  
OKLAHOMA CITY, OK 73102

Office Space For Lease

Suite C: 3,290 SF - \$3,500/Month Modified Gross



NAIRED

COMMERCIAL  
REAL ESTATE

NAIRED

405.840.0600  
NAIRED.COM

ABBIEY SULLIVAN  
405.863.7590  
ABBIEY@NAIRED.COM





## PROPERTY HIGHLIGHTS

- Open Floor Plan with Two Large Offices
- Restrooms and Kitchenette in Suite
- 5 Designated Parking Spots Available
- Midtown Walkability
- 2nd Floor Space with Elevator & Stairs Access

## LOCATION HIGHLIGHTS

- Minutes from Downtown OKC, Automobile Alley, the Innovation District, and OU Health Sciences Center
- Active Redevelopment and Investment Area



405.840.0600  
NAIRED.COM

ABBIEY SULLIVAN  
405.863.7590  
ABBIEY@NAIRED.COM





**NAIRED**

**405.840.0600**

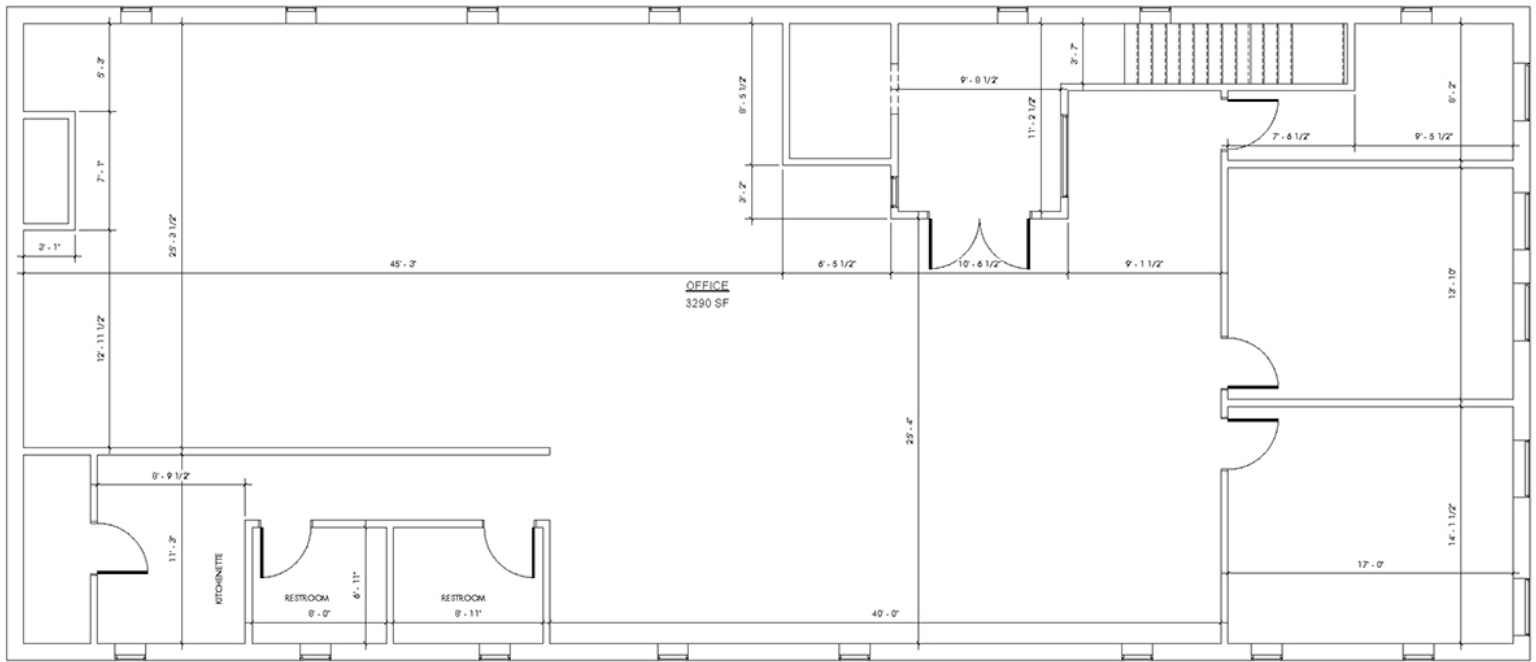
**NAIRED.COM**

**ABBIEY SULLIVAN**

**405.863.7590**

**ABBIEY@NAIRED.COM**

# FLOOR PLAN



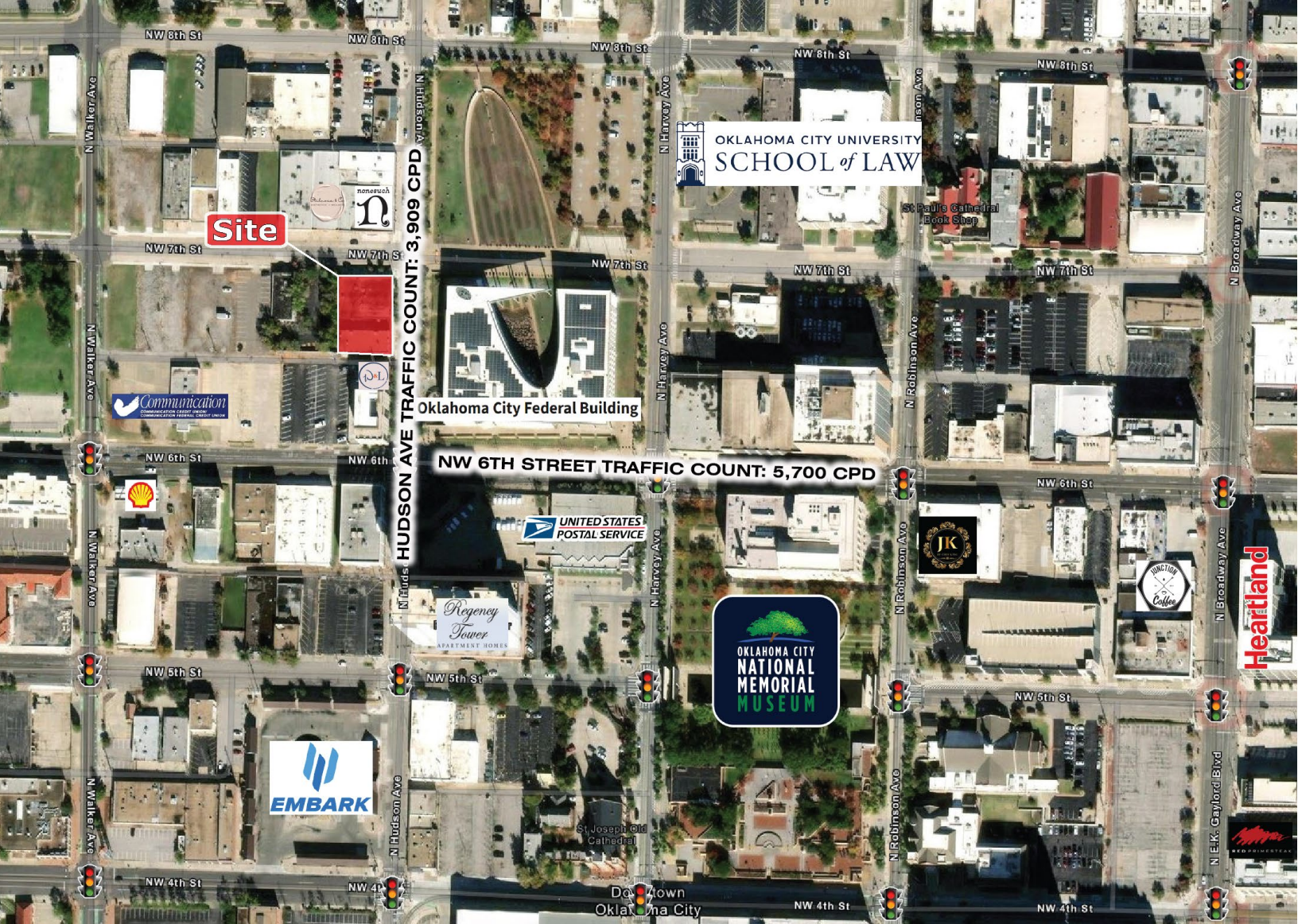
1 AREA PLAN  
1/4" = 1'-0"

# NAIRED

405.840.0600  
NAIRED.COM

**ABBIEY SULLIVAN**  
405.863.7590  
ABBIEY@NAIRED.COM





## DEMOGRAPHICS

	1 MILE	3 MILE	5 MILE
POPULATION	10,934	80,868	212,833
AVERAGE HOUSEHOLD INCOME	\$85,397	\$65,736	\$61,287
TOTAL HOUSEHOLDS	5,891	35,586	86,646

**NAIRED**

**405.840.0600**  
NAIRED.COM

FOLLOW US @NAIRED\_CRE



No warranty or representation, express or implied, is made as to the accuracy of the information contained herein, and the same is submitted subject to errors, omissions, change of price, rental or other conditions, prior to sale, lease, or financing, or withdrawal without notice, and of any special listing conditions imposed by our principals no warranties or representations are made as to the condition of the property or any hazards contained therein are any to be implied.