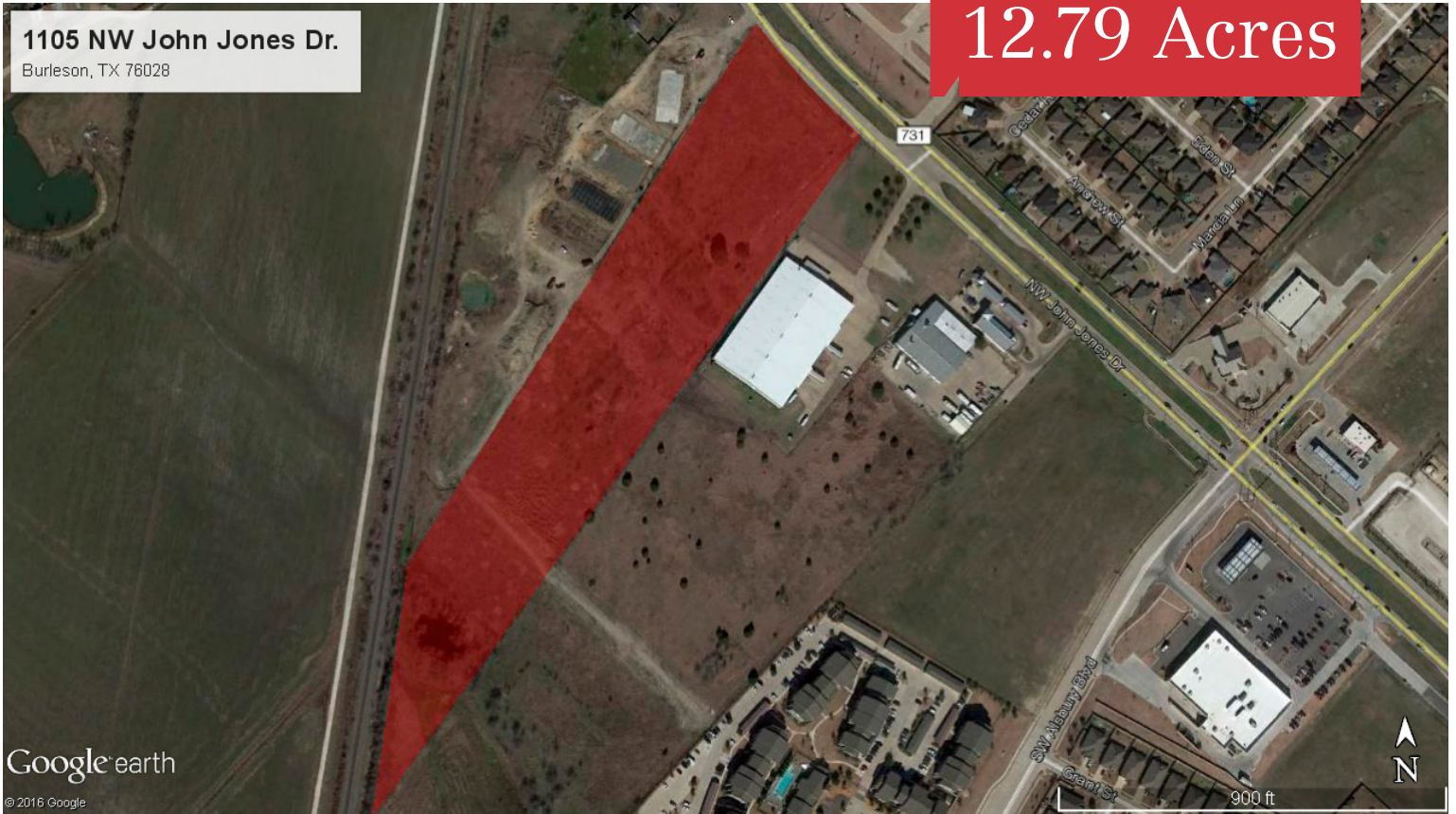


For Sale

12.79 Acres

1105 NW John Jones Dr.
Burleson, TX 76028



1105 NW John Jones Drive

Burleson, Texas 76028

Property Features

- Zoned C-2 Commercial
- ± 330' Frontage on NW John Jones Drive
- Less Than 2 Miles off SW Wilshire Blvd / Hwy 174

Colt Power

817 872 3905
cpower@robertlynn.com



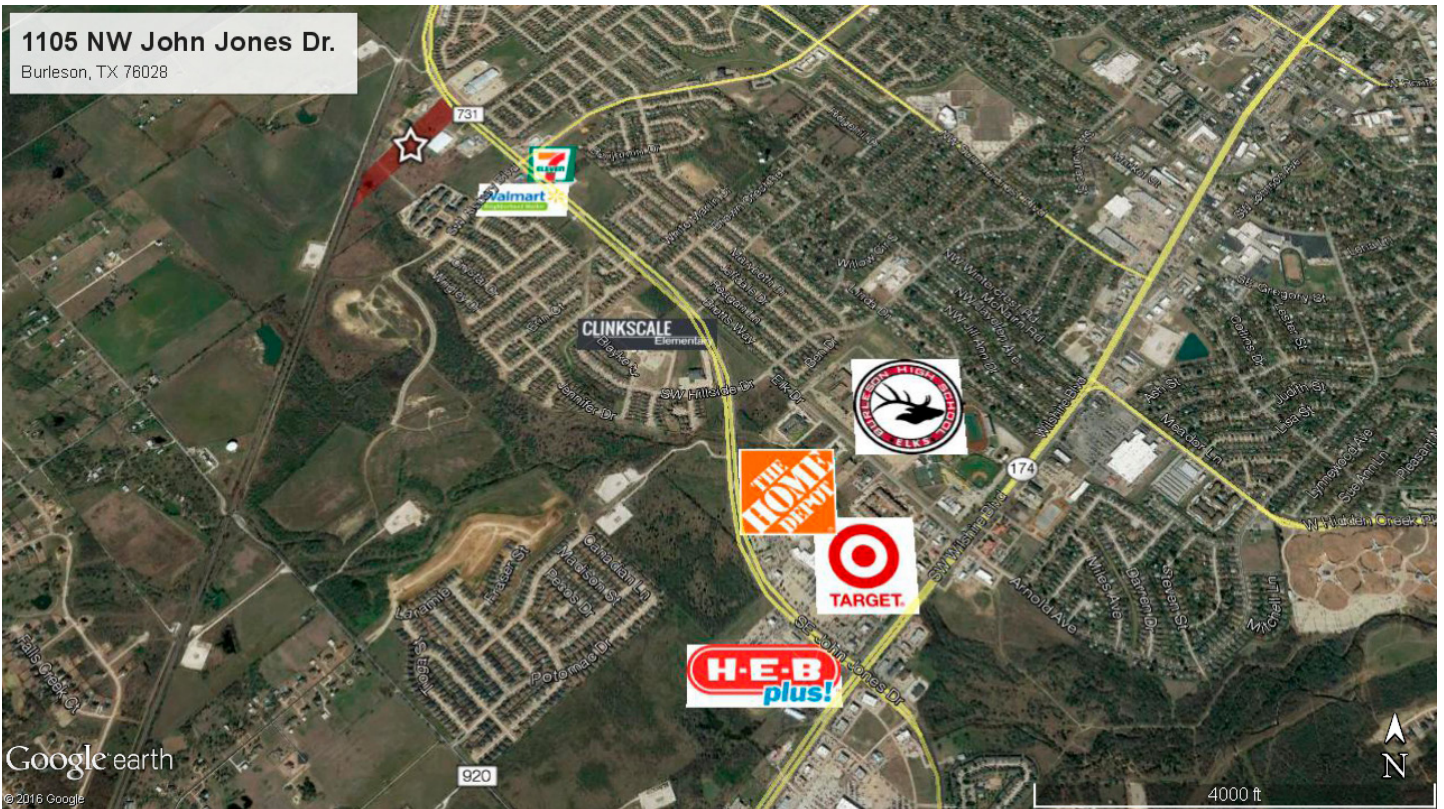
THE INFORMATION CONTAINED HEREIN HAS BEEN GIVEN TO US BY THE OWNER OF THE PROPERTY OR OTHER SOURCES WE DEEM RELIABLE. WE HAVE NO REASON TO DOUBT ITS ACCURACY, BUT WE DO NOT GUARANTEE IT. ALL INFORMATION SHOULD BE VERIFIED PRIOR TO PURCHASE OR LEASE.

1200 Summit Avenue Suite 800
Fort Worth, TX 76102
817 855 8333

nairl.com

For Sale
12.79 Acres

1105 NW John Jones Drive
Burleson, Texas 76028



For Sale
12.79 Acres

1105 NW John Jones Drive
 Burleson, Texas 76028

Population:	1 Mile Radius	3 Mile Radius	5 Mile Radius
2021 Projection	7,850	52,693	87,332
2016 Estimate	7,291	49,051	81,209
2010 Census	5,983	42,743	70,711
Growth 2016-2021	7.67%	7.42%	7.54%
Growth 2010-2016	21.86%	14.76%	14.85%
Households:	1 Mile Radius	3 Mile Radius	5 Mile Radius
2021 Projection	2,598	18,521	30,043
2016 Estimate	2,409	17,228	27,924
2010 Census	1,965	14,961	24,264
Growth 2016 - 2021	7.85%	7.51%	7.59%
Growth 2010 - 2016	22.60%	15.15%	15.08%
Owner Occupied	2,071	13,224	21,999
Renter Occupied	338	4,004	5,926
Household Income:	1 Mile Radius	3 Mile Radius	5 Mile Radius
2016 Average	\$86,224	\$80,109	\$82,789
2016 Median	\$77,224	\$67,848	\$70,757

