

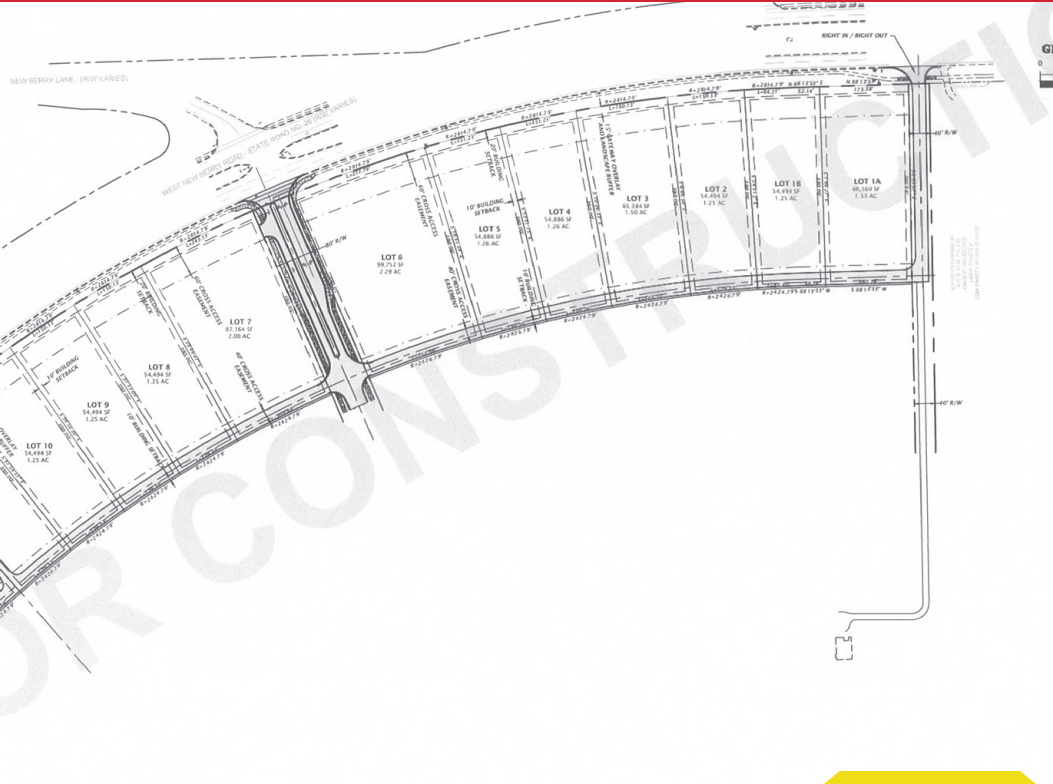
# Coming Soon! Highland Park

Outparcels Across Alachua County's newest and largest Publix

**WATSON**  
COMMERCIAL  
REAL ESTATE, INC.

**Publix®**

54,000 SF  
Major Grocery  
Store



**ADDRESS**

**SIZE**

**TYPE**

**ZONING**

**PRICE**

**W. Newberry Road,  
Florida.**

**1.1 to 2  
ACRES**

**LOTS  
BUILD TO SUIT**

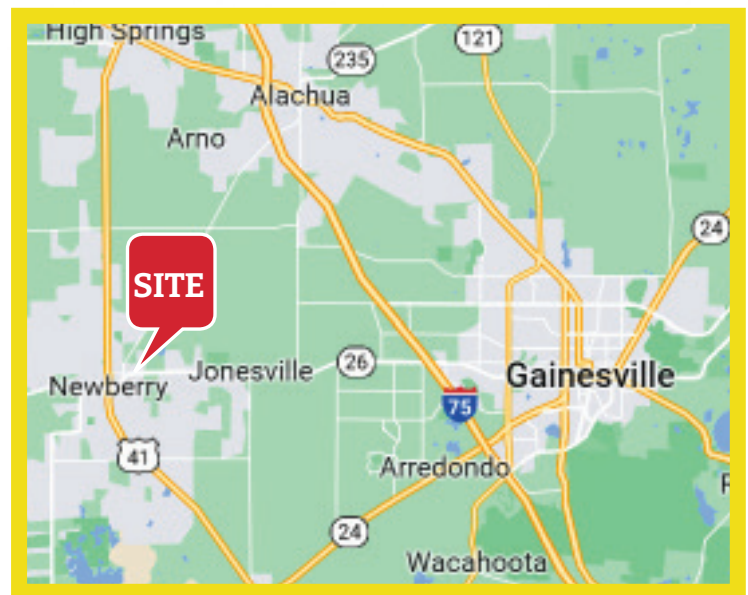
**To Be  
COMMERCIAL**

**Call for Availability**

## Property Highlights:

Watson Commercial Real Estate presents this great investment opportunity:

- ✔ Proposed 54,000 SF major grocery store.
- ✔ Parcels ranging from 1.25 acres to 3 acres.
- ✔ Proposed traffic light.
- ✔ Easy access.
- ✔ Off site retention.



**Duane A. Watson**

Office: (321) 459-0000 Ext. 15

Cell: (321) 223-8845

E-mail: [duane@duanewatson.com](mailto:duane@duanewatson.com)

**Office: (321) 459-0000**

© 2019 | Watson Commercial Real Estate

335 S. Plumosa Street Merritt Island, Fl. 32952



# Highland Park (Coming Soon)

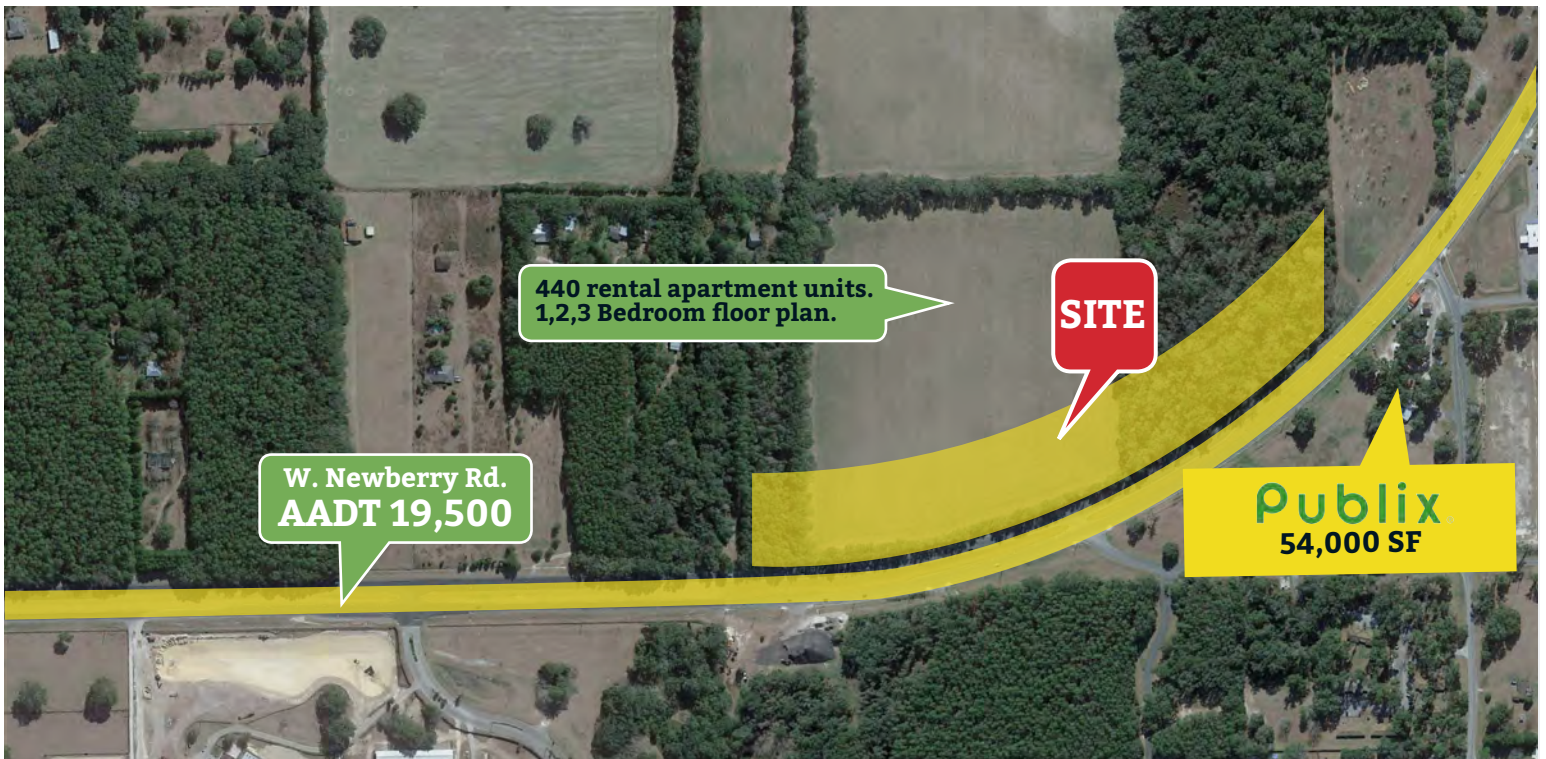


## Summary

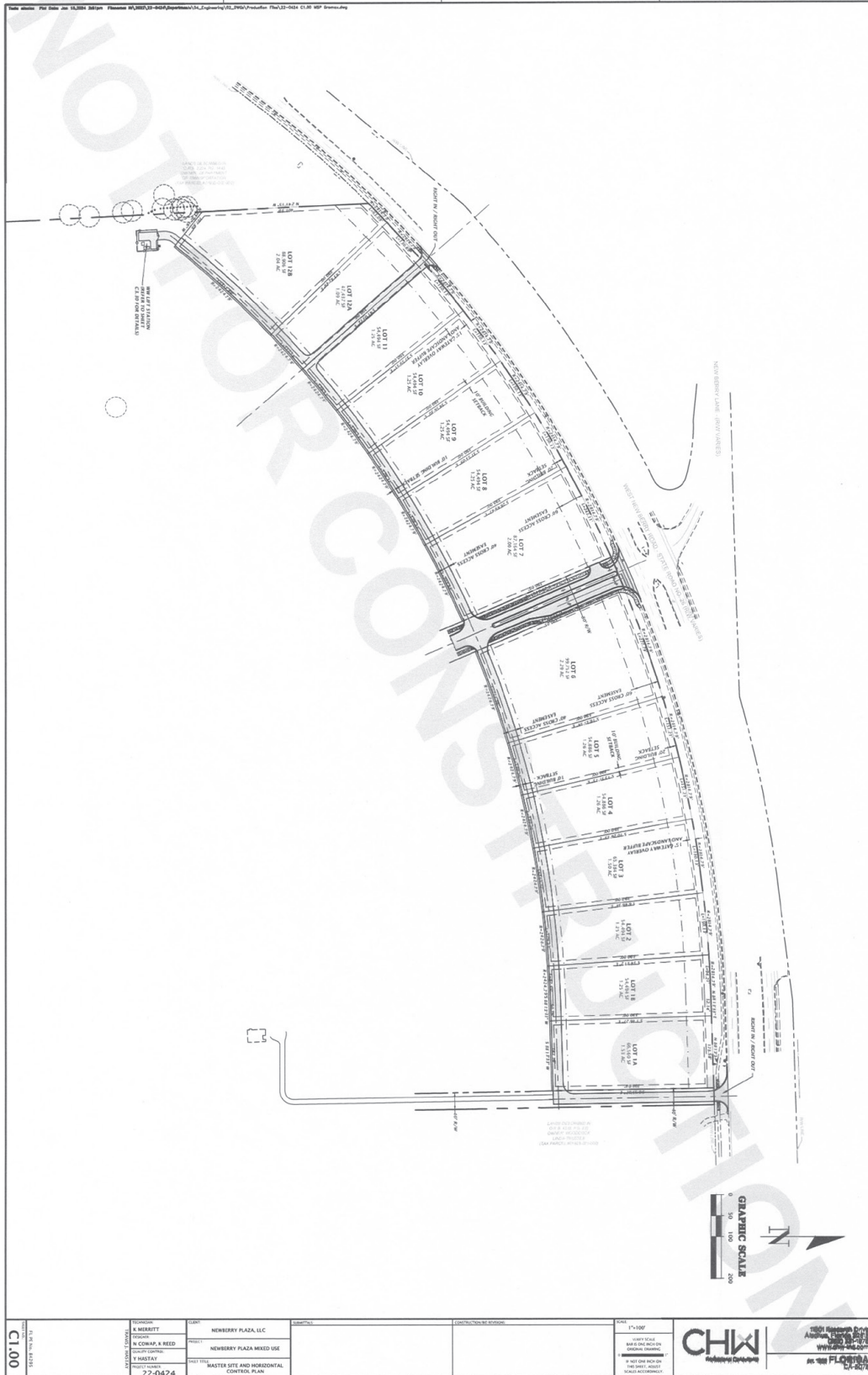
<b>PRICE:</b>	Call for Price
<b>TYPE:</b>	Lots for sale
<b>ZONING:</b>	To be zoned Commercial
<b>LOT SIZE:</b>	1.1 to 3 ACRES

## Property Demographics

	1 MILE	5 MILE	10 MILE
2025 Total Population:	305	7,153	36,336
Avg Household Income:	\$77,022	\$74,772	\$75,991
2025 Total Households:	122	2,864	14,114



# Highland Park (Coming Soon)



Office: (321) 459-0000

© 2019 | Watson Commercial Real Estate  
 335 S. Plumosa Street Merritt Island, FL 32952