

3900 AUTOMATION AVENUE
AUBURN HILLS, MICHIGAN

INVESTMENT FOR SALE
98,356 Square Feet



**SIGNATURE
ASSOCIATES**
KNOW SIGNATURE | KNOW RESULTS



PROPERTY FEATURES

- 98,356 square foot building
- 51,080 square feet office
- 26' clear height
- (1) 12x14 grade level door, (2) truckwells
- Zoned Technology & Research
- 255 parking spaces
- 3,000 amps, 480 volts power
- Long-term lease with credit tenant
- New parking lot and recently painted
- Contact Brokers for Offering Memorandum



For more information, please contact:

JOHN BOYD
(248) 948 0102
jboyd@signatureassociates.com

GARY STEPHENS
(248) 948 0104
gstephens@signatureassociates.com

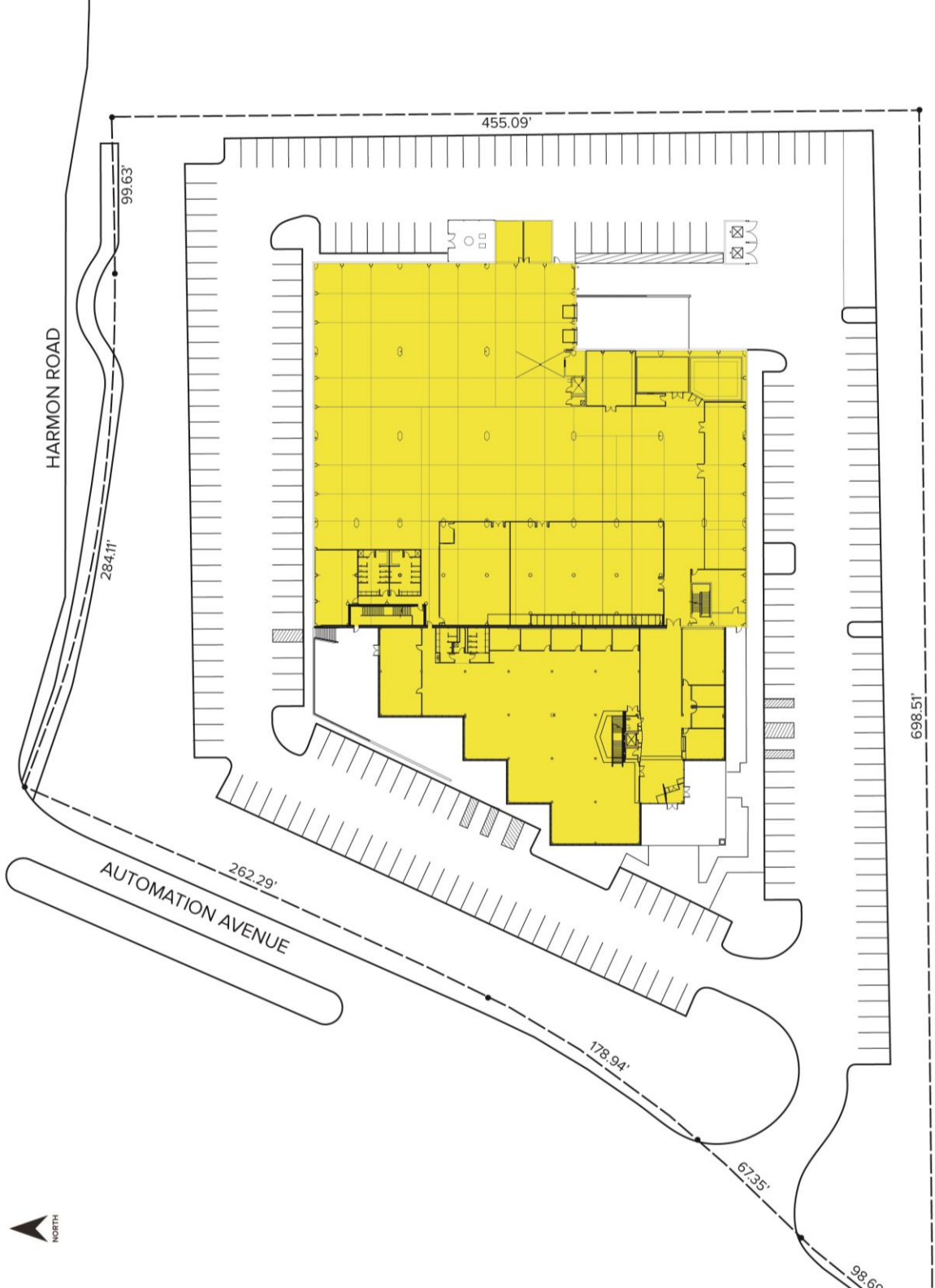
SIGNATURE ASSOCIATES
One Towne Square, Suite 1200
Southfield, MI 48076
www.signatureassociates.com

3900 Automation Avenue – Auburn Hills, Michigan

Investment Sale

98,356
Square Feet

Site Plan



For more information, please contact:

JOHN BOYD
(248) 948 0102
jboyd@signatureassociates.com

GARY STEPHENS
(248) 948 0104
gstephens@signatureassociates.com

SIGNATURE ASSOCIATES
One Towne Square, Suite 1200
Southfield, MI 48076
www.signatureassociates.com

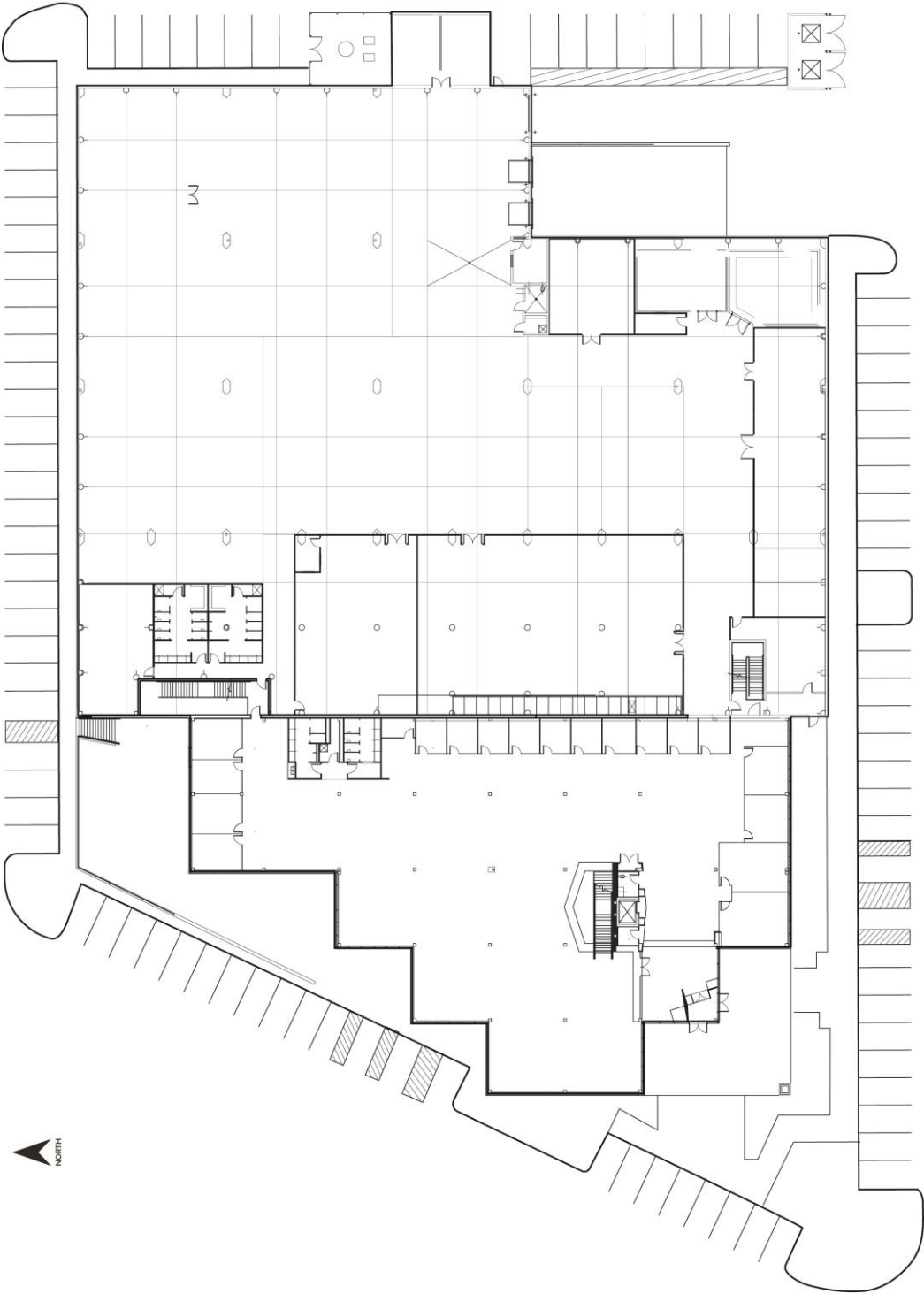
Information is subject to verification and no liability for errors or omissions is assumed. Price is subject to change and listing withdrawal.

3900 Automation Avenue – Auburn Hills, Michigan

Investment Sale

98,356
Square Feet

Floor Plan



For more information, please contact:

JOHN BOYD
(248) 948 0102
jboyd@signatureassociates.com

GARY STEPHENS
(248) 948 0104
gstephens@signatureassociates.com

SIGNATURE ASSOCIATES
One Towne Square, Suite 1200
Southfield, MI 48076
www.signatureassociates.com

Information is subject to verification and no liability for errors or omissions is assumed. Price is subject to change and listing withdrawal.

3900 Automation Avenue – Auburn Hills, Michigan

Investment Sale

98,356
Square Feet

Aerial



For more information, please contact:

JOHN BOYD
(248) 948 0102
jboyd@signatureassociates.com

GARY STEPHENS
(248) 948 0104
gstephens@signatureassociates.com

SIGNATURE ASSOCIATES
One Towne Square, Suite 1200
Southfield, MI 48076
www.signatureassociates.com