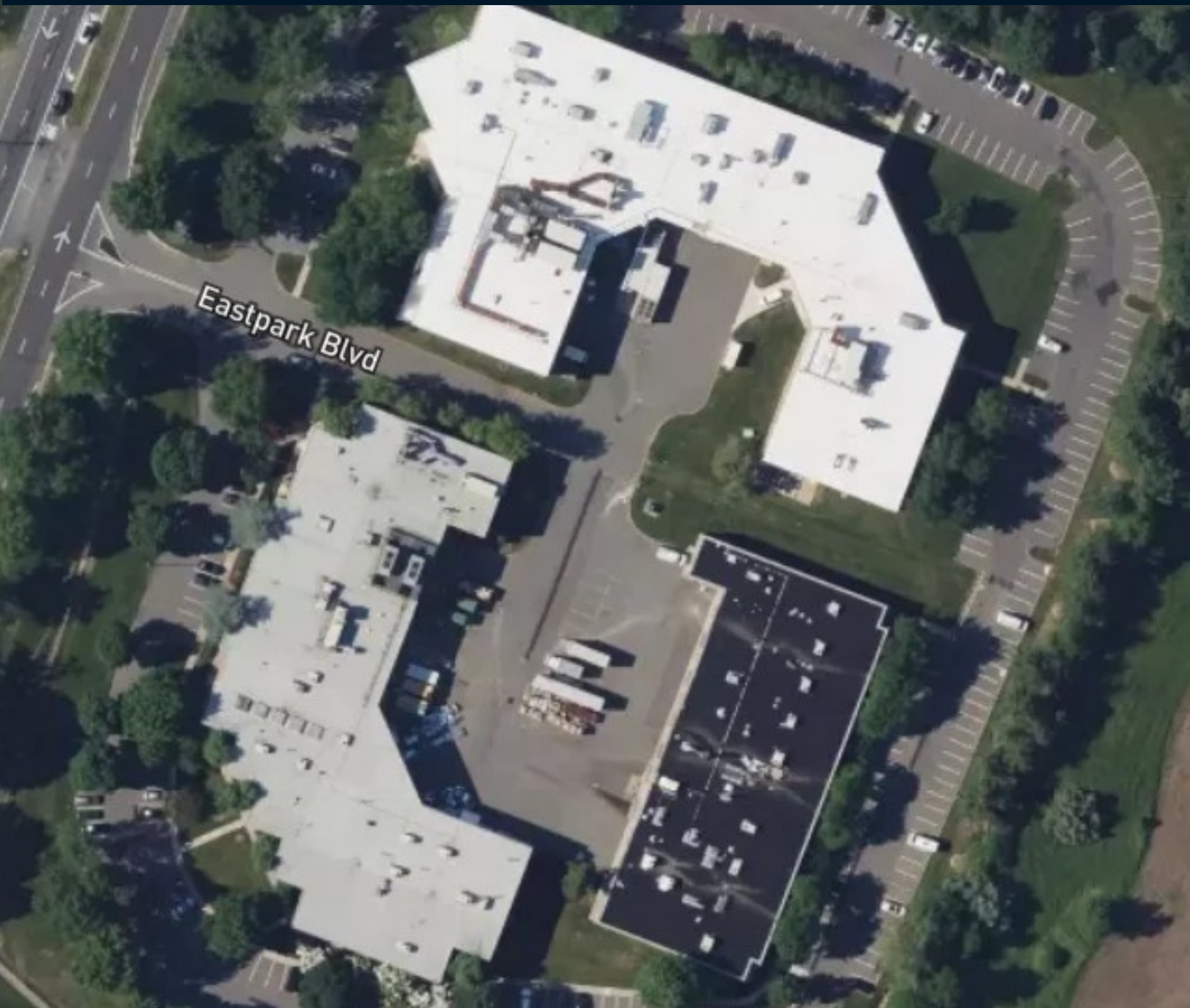


For sublease

*** or lease transfer/assignment**

2007 Eastpark Boulevard
Cranbury, NJ



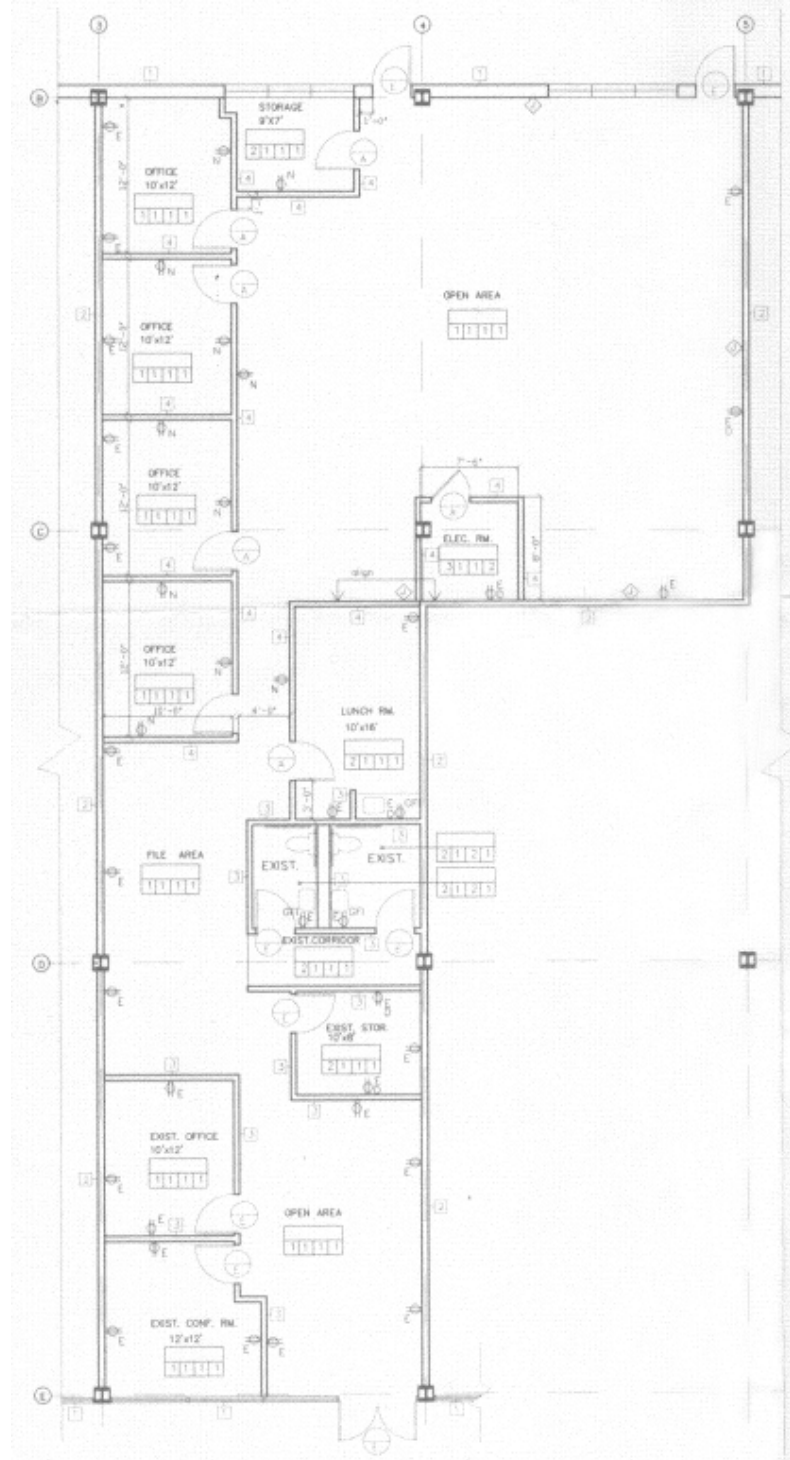
Property Overview

Part of Eastpark at 8A, halfway between NYC and Philadelphia. This space is currently move-in ready for any traditional office user and can be converted to lab if necessary. Located 1 mile from the NJ Turnpike and includes on-site parking.

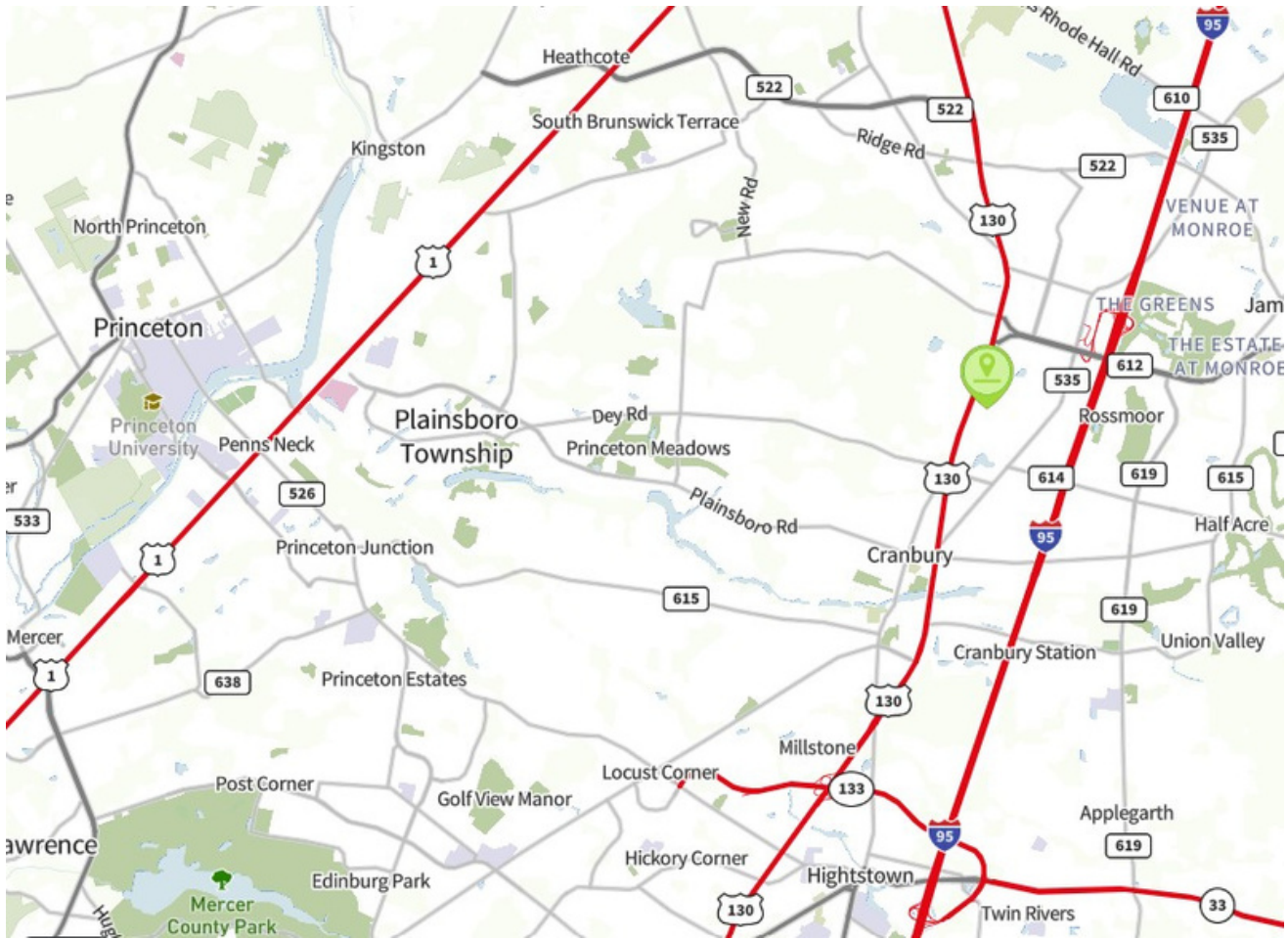
Specs

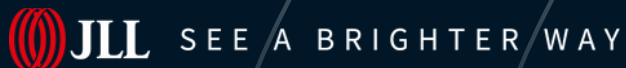
- Asking price: negotiable
- Size: 3,563 SF
- Term: 11/30/2027 - ability to extend

Floorplan



Map





About JLL

For over 200 years, JLL (NYSE: JLL), a leading global commercial real estate and investment management company, has helped clients buy, build, occupy, manage and invest in a variety of commercial, industrial, hotel, residential and retail properties. A Fortune 500® company with annual revenue of \$20.9 billion and operations in over 80 countries around the world, our more than 103,000 employees bring the power of a global platform combined with local expertise. Driven by our purpose to shape the future of real estate for a better world, we help our clients, people and communities SEE A BRIGHTER WAYSM. JLL is the brand name, and a registered trademark, of Jones Lang LaSalle Incorporated. For further information, visit [jll.com](https://www.jll.com).

JLL

John Buckley

john.buckley@jll.com

+1 732 590 4175

Alex Crane

alex.crane@jll.com

+1 732 590 4187

Jones Lang LaSalle Brokerage, Inc.

Although information has been obtained from sources deemed reliable, JLL does not make any guarantees, warranties or representations, express or implied, as to the completeness or accuracy as to the information contained herein. Any projections, opinions, assumptions or estimates used are for example only. There may be differences between projected and actual results, and those differences may be material. JLL does not accept any liability for any loss or damage suffered by any party resulting from reliance on this information. If the recipient of this information has signed a confidentiality agreement with JLL regarding this matter, this information is subject to the terms of that agreement. ©2024. Jones Lang LaSalle IP, Inc. All rights reserved.