



PROJECT STATISTICS

TOTAL UNITS	92 UNITS
FLANDERS HOTEL	152 SPACES
SOLEIL CONDOMINIUMS	188 SPACES
TOTAL PARKING SPACES	340 SPACES

FLOOR	UNITS	PARKING
6 th	22	0
5 th	21	0
4 th	16	72
3 rd	12	93
2 nd	12	93
1 st	9	82
TOTAL	92	340

AERIAL PHOTO

11/01/2013

THE SOLEIL
 1101 OCEAN AVENUE
 OCEAN CITY, CAPE MAY COUNTY, NEW JERSEY

SELECT PROPERTIES

MINNO WASKO
 ARCHITECTS AND PLANNERS



PERSPECTIVE VIEW FROM ELEVENTH STREET AND OCEAN AVENUE.

DATE: 11/01/2013

MINNO WASKO
ARCHITECTS AND PLANNERS

80 LAMBERT LANE, SUITE 105, LAMBERTVILLE, NEW JERSEY 08530 MINNOWASKO.COM

SELECT PROPERTIES

THE SOLEIL

OCEAN CITY, CAPE MAY COUNTY, NEW JERSEY

12-0668-01
COPYRIGHT © MINNO & WASKO ARCHITECTS AND PLANNERS



PROJECT STATISTICS

TOTAL UNITS	92 UNITS
FLANDERS HOTEL	152 SPACES
SOLEIL CONDOMINIUMS	188 SPACES
TOTAL PARKING SPACES	340 SPACES

FLOOR	UNITS	PARKING
6 th	22	0
5 th	21	0
4 th	16	72
3 rd	12	93
2 nd	12	93
1 st	9	82
TOTAL	92	340

FIRST FLOOR



11/01/2013
SCALE: 1" = 30'

THE SOLEIL
1101 OCEAN AVENUE
OCEAN CITY, CAPE MAY COUNTY, NEW JERSEY
SELECT PROPERTIES

MINNO WASKO
ARCHITECTS AND PLANNERS

A-1



PROJECT STATISTICS

TOTAL UNITS	92 UNITS
FLANDERS HOTEL	152 SPACES
SOLEIL CONDOMINIUMS	188 SPACES
TOTAL PARKING SPACES	340 SPACES

FLOOR	UNITS	PARKING
6 th	22	0
5 th	21	0
4 th	16	72
3 rd	12	93
2 nd	12	93
1 st	9	82
TOTAL	92	340

SECOND FLOOR



11/01/2013
SCALE: 1" = 30'

THE SOLEIL
1101 OCEAN AVENUE
OCEAN CITY, CAPE MAY COUNTY, NEW JERSEY
SELECT PROPERTIES

MINNO WASKO
ARCHITECTS AND PLANNERS

A-2



PROJECT STATISTICS

TOTAL UNITS	92 UNITS
FLANDERS HOTEL	152 SPACES
SOLEIL CONDOMINIUMS	188 SPACES
TOTAL PARKING SPACES	340 SPACES

FLOOR	UNITS	PARKING
6 th	22	0
5 th	21	0
4 th	16	72
3 rd	12	93
2 nd	12	93
1 st	9	82
TOTAL	92	340

THIRD FLOOR



11/01/2013
SCALE: 1" = 30'

THE SOLEIL
1101 OCEAN AVENUE
OCEAN CITY, CAPE MAY COUNTY, NEW JERSEY
SELECT PROPERTIES

MINNO WASKO
ARCHITECTS AND PLANNERS

A-3



PROJECT STATISTICS

TOTAL UNITS	92 UNITS
FLANDERS HOTEL	152 SPACES
SOLEIL CONDOMINIUMS	188 SPACES
TOTAL PARKING SPACES	340 SPACES

FLOOR	UNITS	PARKING
6 th	22	0
5 th	21	0
4 th	16	72
3 rd	12	93
2 nd	12	93
1 st	9	82
TOTAL	92	340

FOURTH FLOOR



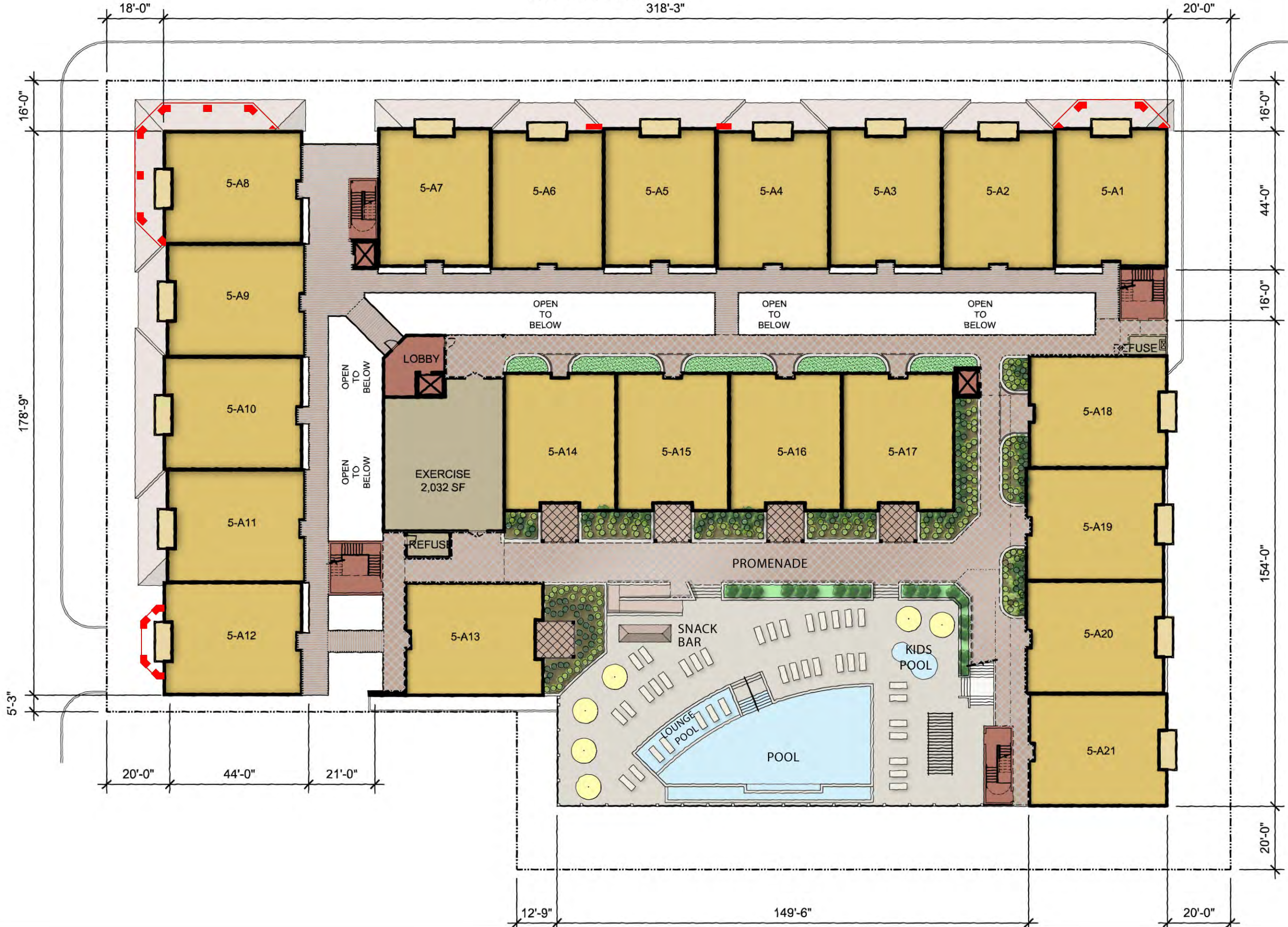
11/01/2013
SCALE: 1" = 30'

THE SOLEIL
1101 OCEAN AVENUE
OCEAN CITY, CAPE MAY COUNTY, NEW JERSEY
SELECT PROPERTIES

MINNO WASKO
ARCHITECTS AND PLANNERS

A-4

ELEVENTH STREET
318'-3"



PROJECT STATISTICS

TOTAL UNITS	92 UNITS
FLANDERS HOTEL	152 SPACES
SOLEIL CONDOMINIUMS	188 SPACES
TOTAL PARKING SPACES	340 SPACES

FLOOR	UNITS	PARKING
6 th	22	0
5 th	21	0
4 th	16	72
3 rd	12	93
2 nd	12	93
1 st	9	82
TOTAL	92	340

FIFTH FLOOR

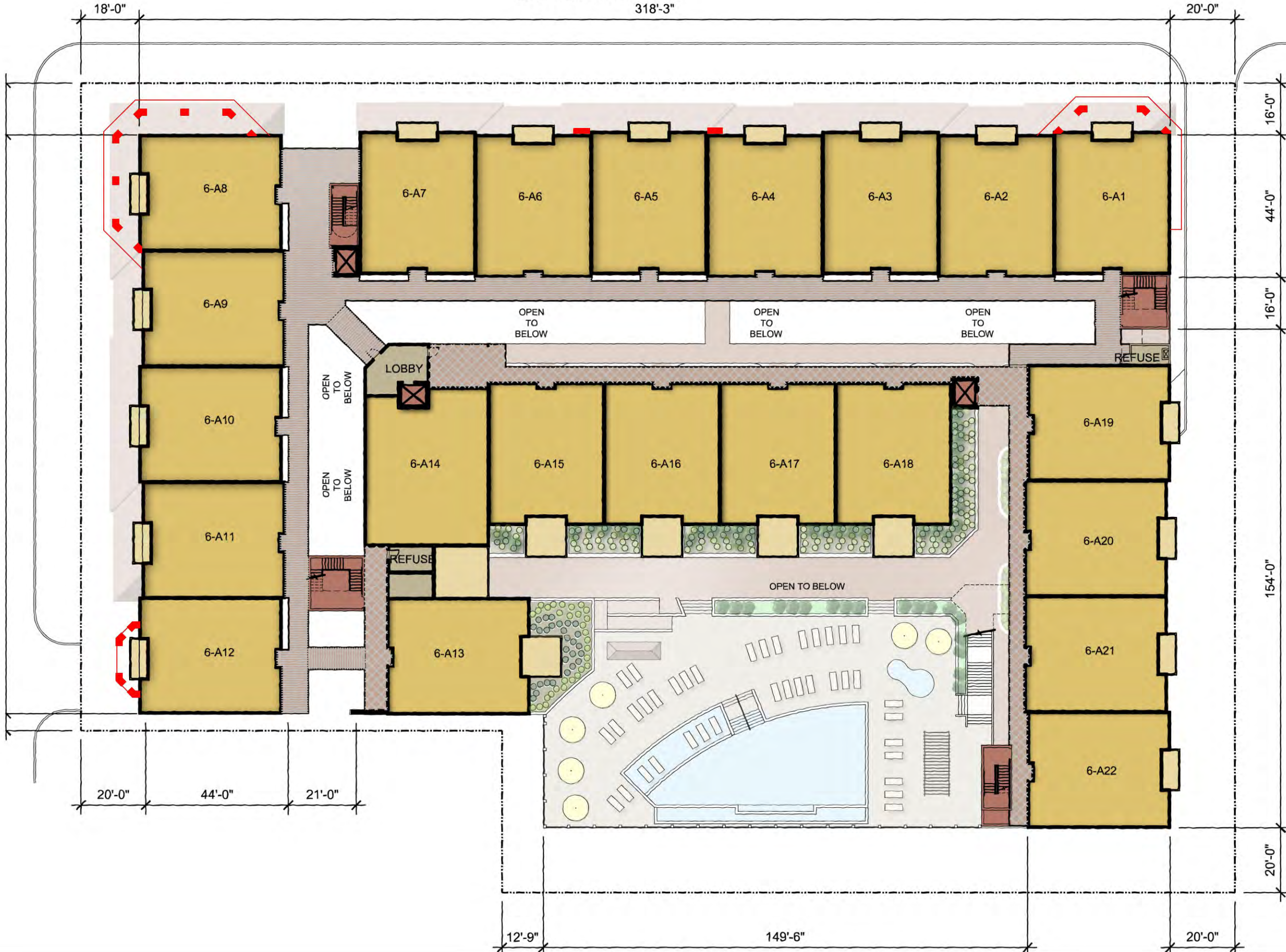
THE SOLEIL
1101 OCEAN AVENUE
OCEAN CITY, CAPE MAY COUNTY, NEW JERSEY
SELECT PROPERTIES

MINNO WASKO
ARCHITECTS AND PLANNERS

A-5

ELEVENTH STREET

318'-3"



PROJECT STATISTICS

TOTAL UNITS	92 UNITS
FLANDERS HOTEL	152 SPACES
SOLEIL CONDOMINIUMS	188 SPACES
TOTAL PARKING SPACES	340 SPACES

FLOOR	UNITS	PARKING
6 th	22	0
5 th	21	0
4 th	16	72
3 rd	12	93
2 nd	12	93
1 st	9	82
TOTAL	92	340

SIXTH FLOOR



11/01/2013
SCALE: 1" = 30'

THE SOLEIL
1101 OCEAN AVENUE
OCEAN CITY, CAPE MAY COUNTY, NEW JERSEY
SELECT PROPERTIES

MINNO WASKO
ARCHITECTS AND PLANNERS

A-6

PROJECT STATISTICS

TOTAL UNITS	92 UNITS
FLANDERS HOTEL	152 SPACES
SOLIEL CONDOMINIUMS	188 SPACES
TOTAL PARKING SPACES	340 SPACES



OCEAN AVENUE ELEVATION

11/01/2013
SCALE: 1/16" = 1'-0"

THE SOLEIL
OCEAN CITY, CAPE MAY COUNTY, NEW JERSEY
SELECT PROPERTIES

MINNO WASKO
ARCHITECTS AND PLANNERS

PROJECT STATISTICS

TOTAL UNITS	92 UNITS
FLANDERS HOTEL	152 SPACES
SOLIEL CONDOMINIUMS	188 SPACES
TOTAL PARKING SPACES	340 SPACES



ELEVENTH ST. ELEVATION

11/01/2013
SCALE: 1/16" = 1'-0"

THE SOLEIL
OCEAN CITY, CAPE MAY COUNTY, NEW JERSEY
SELECT PROPERTIES

MINNO ■ WASKO
ARCHITECTS AND PLANNERS

PROJECT STATISTICS

TOTAL UNITS	92 UNITS
FLANDERS HOTEL	152 SPACES
SOLIEL CONDOMINIUMS	188 SPACES
TOTAL PARKING SPACES	340 SPACES

EAST ELEVATION



EAST ELEVATION

ROOF
6TH
5TH
4TH
3RD
2ND
1ST

11/01/2013
SCALE: 1/16" = 1'-0"

THE SOLEIL
OCEAN CITY, CAPE MAY COUNTY, NEW JERSEY
SELECT PROPERTIES

MINNO ■ WASKO
ARCHITECTS AND PLANNERS

PROJECT STATISTICS

TOTAL UNITS	92 UNITS
FLANDERS HOTEL	152 SPACES
SOLIEL CONDOMINIUMS	188 SPACES
TOTAL PARKING SPACES	340 SPACES

SOUTH ELEVATION



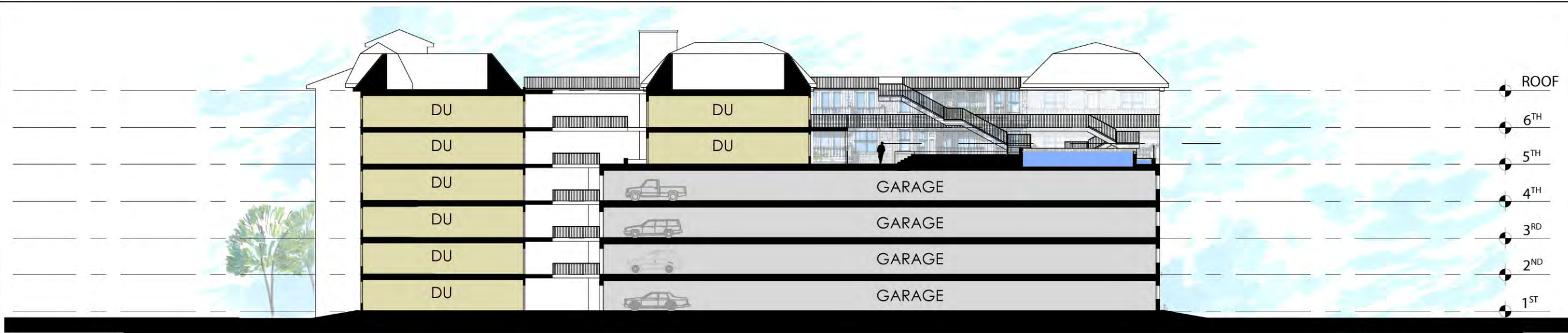
ROOF
6TH
5TH
4TH
3RD
2ND
1ST

11/01/2013
SCALE: 1/16" = 1'-0"

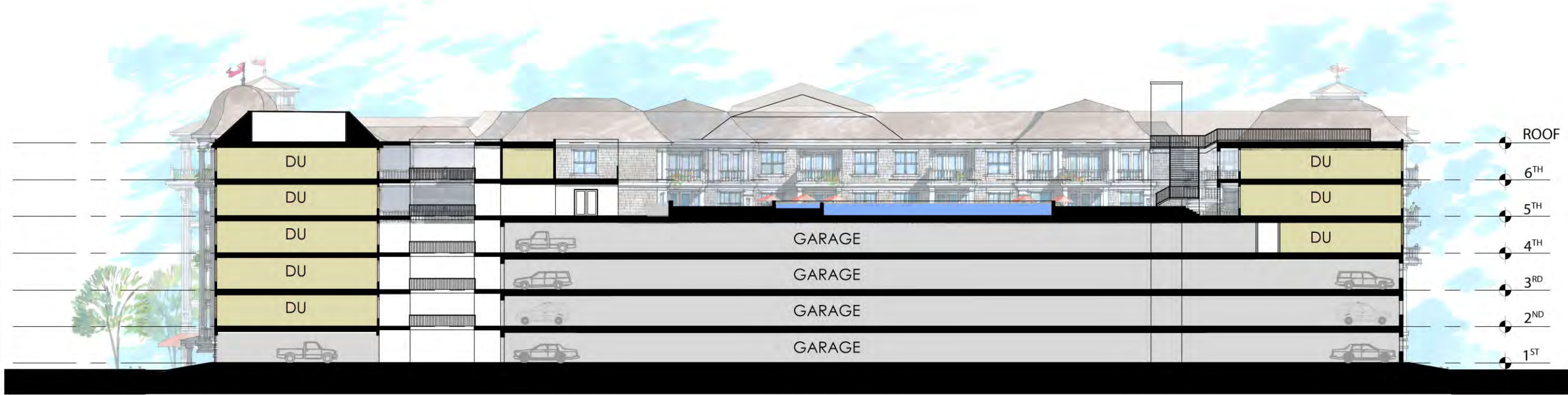
THE SOLEIL
OCEAN CITY, CAPE MAY COUNTY, NEW JERSEY
SELECT PROPERTIES

MINNO ■ WASKO
ARCHITECTS AND PLANNERS

A-11



SECTION 1

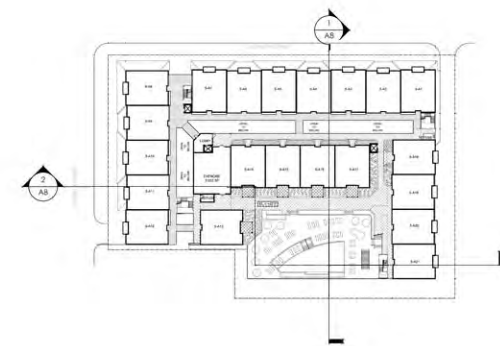


SECTION 2

PROJECT STATISTICS

TOTAL UNITS	92 UNITS
FLANDERS HOTEL	152 SPACES
SOLEIL CONDOMINIUMS	188 SPACES
TOTAL PARKING SPACES	340 SPACES

FLOOR	UNITS	PARKING
6 th	22	0
5 th	21	0
4 th	16	72
3 rd	12	93
2 nd	12	93
1 st	9	82
TOTAL	92	340



11/01/2013
SCALE: 1" = 30'

THE SOLEIL
1101 OCEAN AVENUE
OCEAN CITY, CAPE MAY COUNTY, NEW JERSEY

SELECT PROPERTIES

MINNO WASKO
ARCHITECTS AND PLANNERS

PROJECT STATISTICS

TOTAL UNITS	92 UNITS
FLANDERS HOTEL	152 SPACES
SOLEIL CONDOMINIUMS	188 SPACES
TOTAL PARKING SPACES	340 SPACES

FLOOR	UNITS	PARKING
6 th	22	0
5 th	21	0
4 th	16	72
3 rd	12	93
2 nd	12	93
1 st	9	82
TOTAL	92	340



EXTERIOR WALL AT CORNER UNITS

UNIT 'A' FLOOR PLAN OPTION 1



EXTERIOR WALL AT CORNER UNITS

UNIT 'A' FLOOR PLAN OPTION 2

UNIT 'A' PLANS

11/01/2013
SCALE: 1/8" = 1'-0"

THE SOLEIL
1101 OCEAN AVENUE
OCEAN CITY, CAPE MAY COUNTY, NEW JERSEY

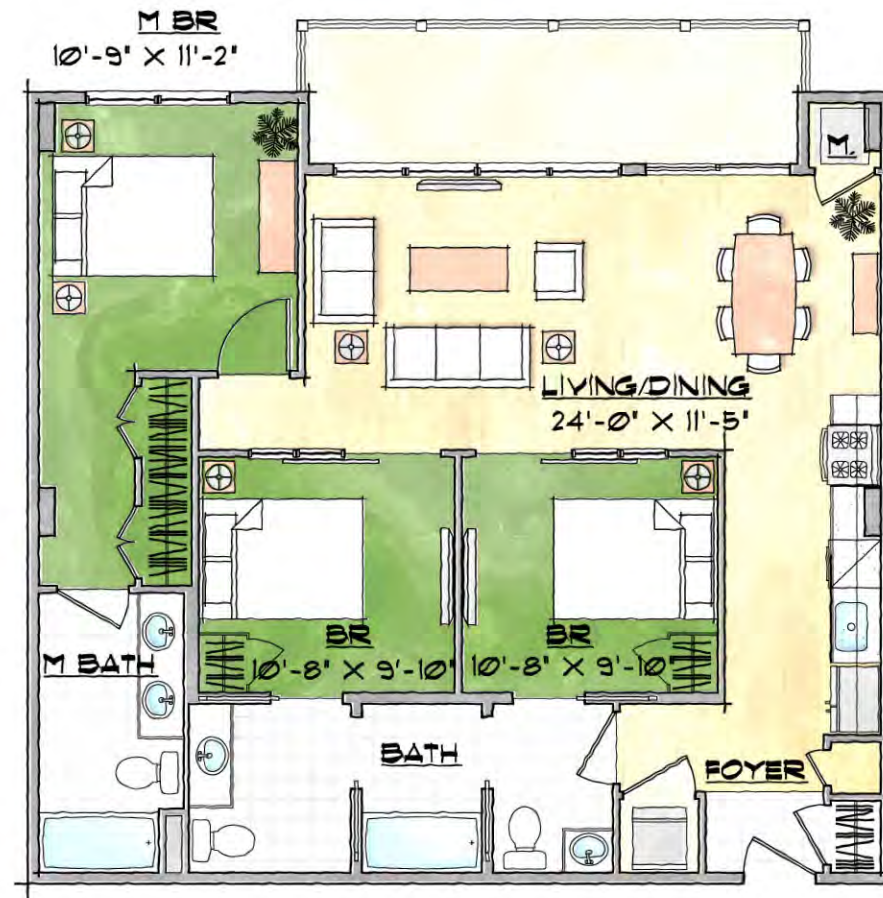
SELECT PROPERTIES

MINNO WASKO
ARCHITECTS AND PLANNERS

PROJECT STATISTICS

TOTAL UNITS	92 UNITS
FLANDERS HOTEL	152 SPACES
SOLEIL CONDOMINIUMS	188 SPACES
TOTAL PARKING SPACES	340 SPACES

FLOOR	UNITS	PARKING
6 th	22	0
5 th	21	0
4 th	16	72
3 rd	12	93
2 nd	12	93
1 st	9	82
TOTAL	92	340



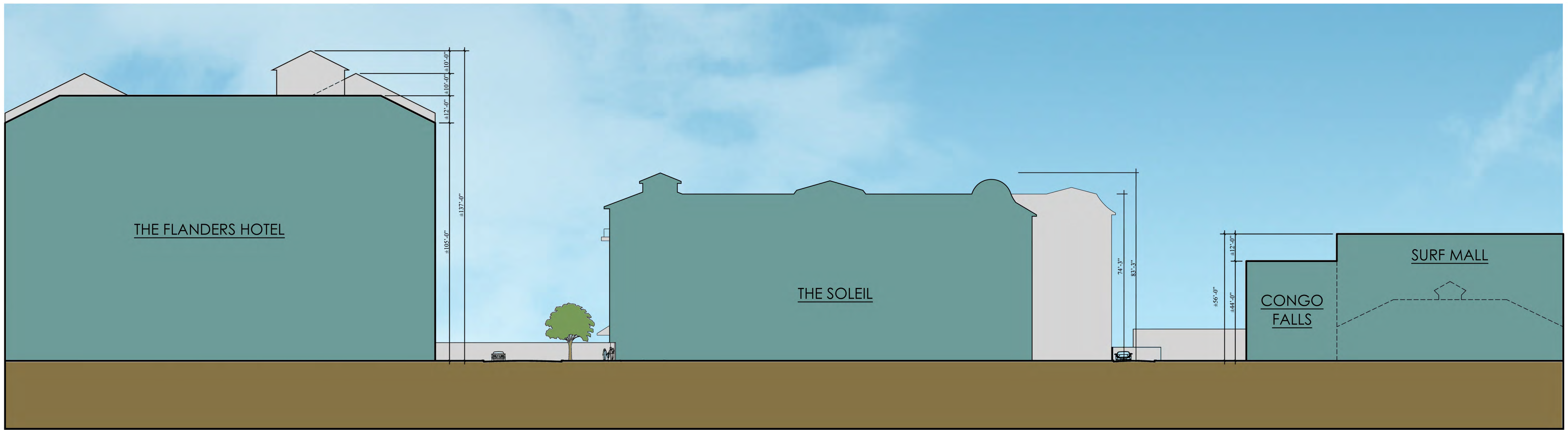
UNIT 'B' FLOOR PLAN

UNIT 'B' PLANS

11/01/2013
 SCALE: 1/8" = 1'-0"
THE SOLEIL
 1101 OCEAN AVENUE
 OCEAN CITY, CAPE MAY COUNTY, NEW JERSEY

SELECT PROPERTIES

MINNO ■ WASKO
 ARCHITECTS AND PLANNERS



HEIGHT COMPARISON

DATE: 11/01/2013