



# Office Space for Lease

**656-688 SE BAYBERRY LANE  
LEE'S SUMMIT, MISSOURI**

## Property Highlights

- Nine building office complex
- 218 sf to 4,060 (±) sf available
- Ideal space for professional or medical user
- Single room suites available
- Turnkey and tenant finish available
- Well maintained business center with lighted parking and on-site management
- Great amenities nearby on 291 Highway
- Excellent access to 291 Highway, 50 Highway and I-470
- Minutes from Downtown Lee's Summit
- Lease rates vary per unit, gross modified lease

*For information, please contact:*

**Justin A. Beal**  
*Executive Managing Director, Principal*  
t 816-268-4241  
jbeal@nzimmer.com

1220 Washington Street, Suite 300  
Kansas City, MO 64105

[nmrkzimmer.com](http://nmrkzimmer.com)

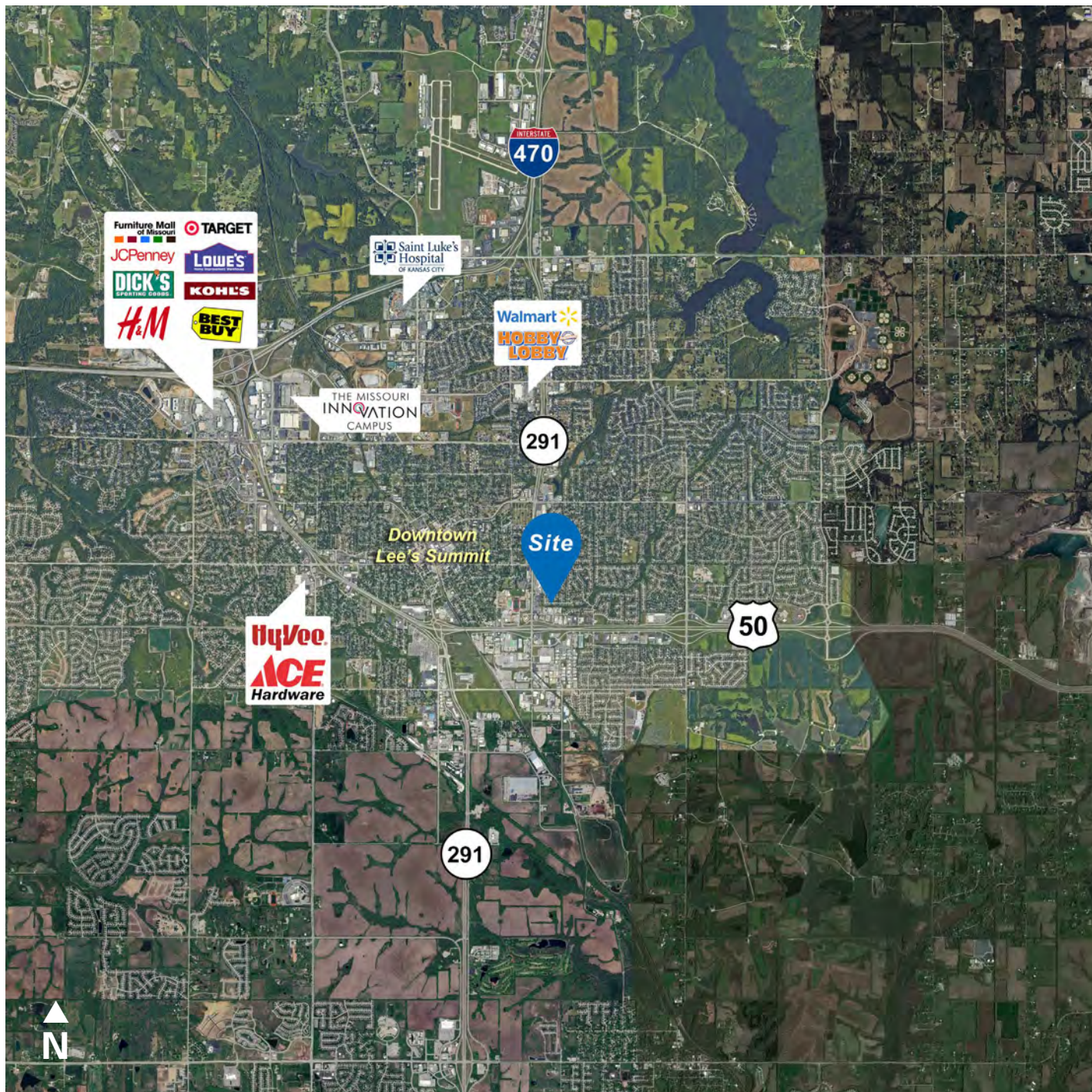


**NEWMARK**  
ZIMMER

The information contained herein has been obtained from sources deemed reliable but has not been verified and no guarantee, warranty or representation, either express or implied, is made with respect to such information. Terms of sale or lease and availability are subject to change or withdrawal without notice.



656-688 SE BAYBERRY LANE, LEE'S SUMMIT, MISSOURI



#### CONTACT

**Justin A. Beal, CRRP**

*Executive Managing Director, Principal*

t 816-268-4241

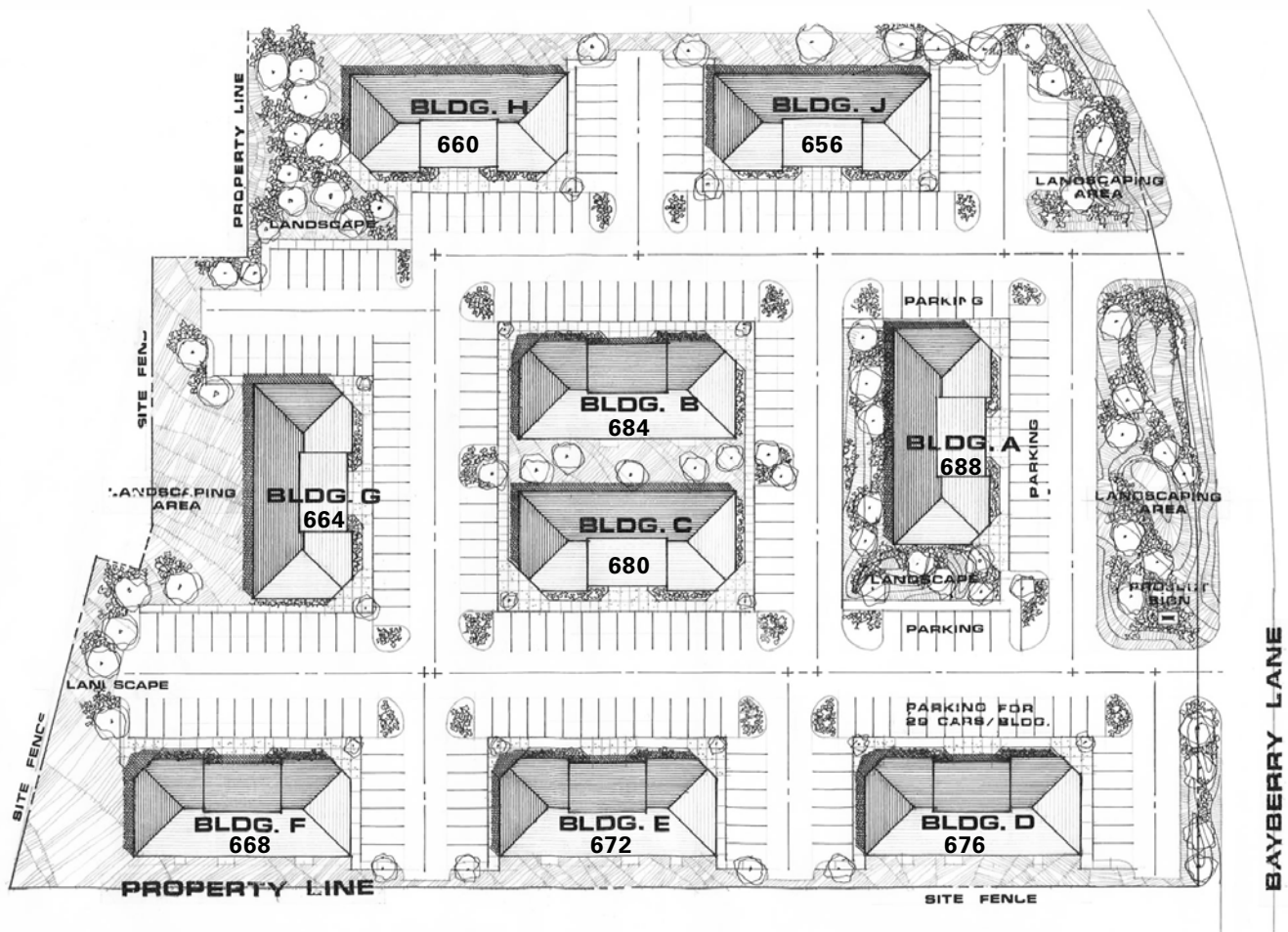
jbeal@nzimmer.com

[nmrkzimmer.com](http://nmrkzimmer.com)

**NEWMARK**  
ZIMMER



Site Plan



CONTACT

Justin A. Beal, CRRP

Executive Managing Director, Principal

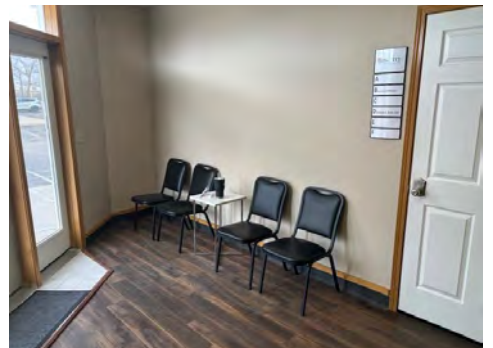
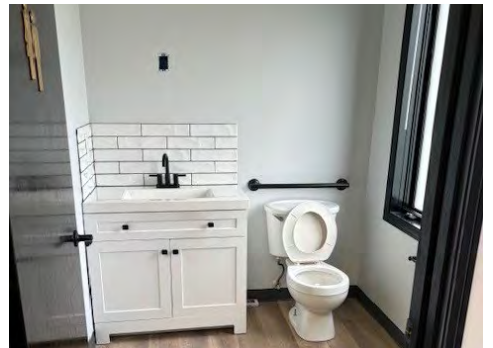
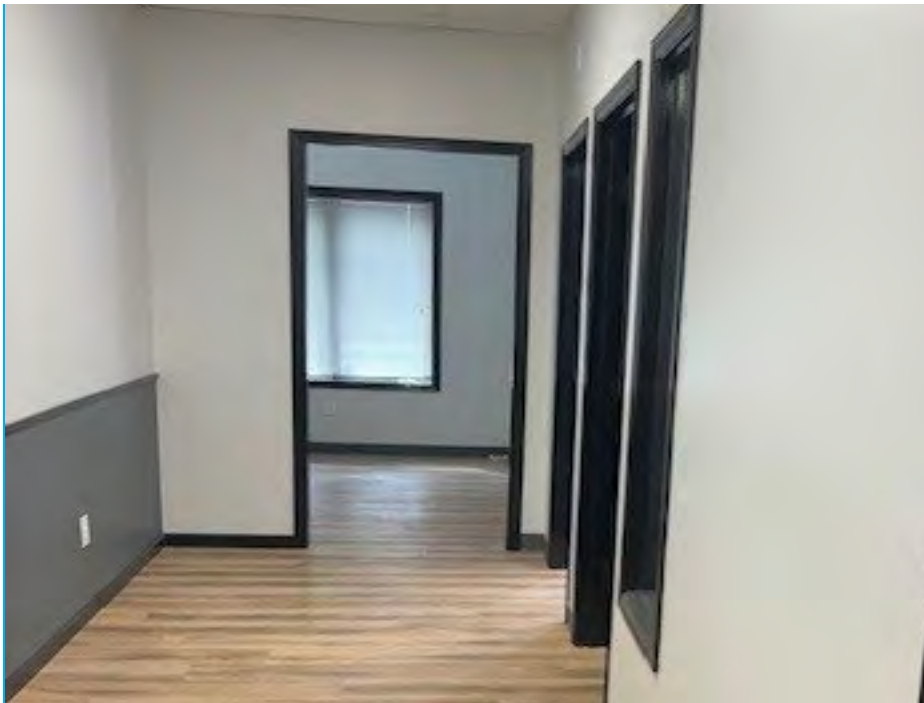
t 816-268-4241

jbeal@nzimmer.com

[nmrkzimmer.com](http://nmrkzimmer.com)

**NEWMARK**  
ZIMMER

656-688 SE BAYBERRY LANE, LEE'S SUMMIT, MISSOURI



#### CONTACT

**Justin A. Beal, CRRP**

*Executive Managing Director, Principal*

t 816-268-4241

jbeal@nzimmer.com

[nrmkzimmer.com](http://nrmkzimmer.com)

**NEWMARK**  
ZIMMER