

DATE	10-20-19	APPROVED
DESCRIPTION	CLIENT REVIEW	
SYMBOL	1	

PENN & CO.
 42296 BENFOLD SQUARE
 ASHBURN VA 20148
 (703) 675-4522 PHONE
DESIGN CONSULTANT

The Carpentry & Painting Experts
 3006 LINCOLN AVENUE
 RICHMOND, VA 23228
 (804) 441-8278 PHONE
GENERAL CONTRACTOR

APPROVED	
ACTIVITY	
SATISFACTORY TO DATE	
DESIGNED BY	DRW: JRP3
CHECKED BY	CHK: JRP3

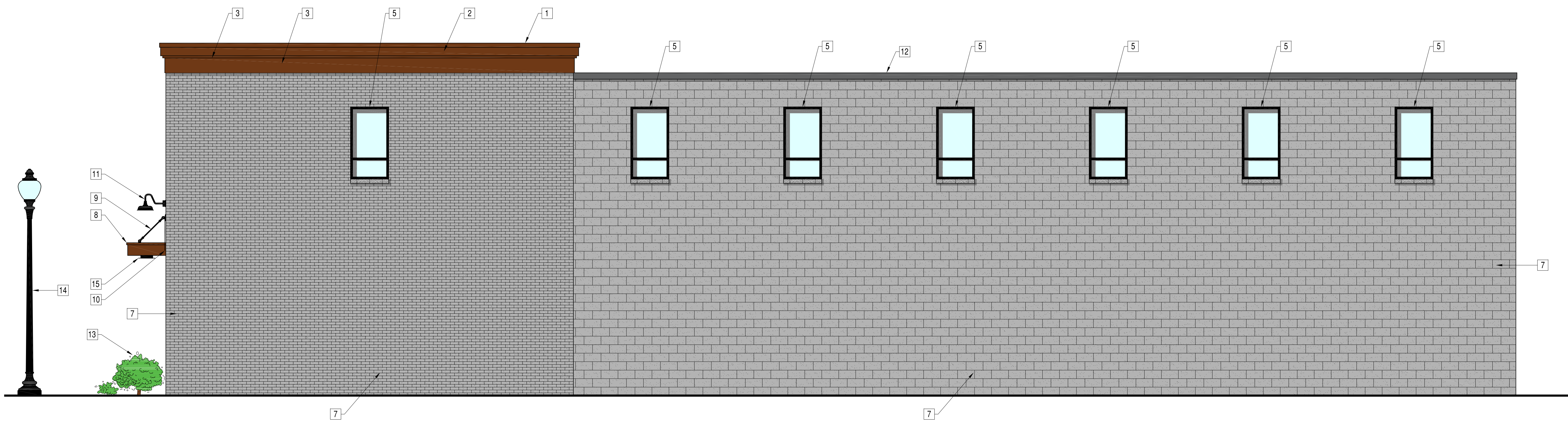
409 E LABURNUM AVE EXTERIOR IMPROVEMENTS
 RICHMOND, VIRGINIA 23222
 FRONT AND RIGHT ELEVATION RENDERINGS

SCALE	1/4"=1'-0"
PROJECT NO.	2019-01
CONSTR. CONTR. NO.	
DRAWING NO.	
SHEET	OF
A-201	



FRONT ELEVATION
 1/4"=1'-0"

- BLDG ELEVATION MATERIAL KEYNOTES**
- | | | |
|-----|--|--------------------|
| 1. | ALUMINUM METAL COPING CAP AT PARAPET. | COLOR BROWN |
| 2. | 1X12 FASCIA BOARD WITH ALUMINUM TRIM. | COLOR BROWN |
| 3. | 1X12 PAINTED FRIEZE BOARD. | COLOR BROWN |
| 4. | TRIM MOULDING. | COLOR BROWN |
| 5. | PAINT EXISTING ALUMINUM FRAMES. | COLOR BLACK |
| 6. | REPLACE EXISTING BROKEN GLASS, TYP WHERE APPLICABLE | |
| 7. | RE-PAINTED EXISTING MASONRY AND SILLS. | COLOR AMAZING GRAY |
| 8. | ALUMINUM AWNING KIT WITH 8" FLAT PANELS | COLOR BROWN |
| 9. | STEEL AWNING BRACES. | COLOR PLACK |
| 10. | WROUGHT IRON BUILDING NUMBER | COLOR BLACK |
| 11. | NEW BARN TYPE EXTERIOR LIGHT FIXTURE | COLOR BLACK |
| 12. | RE-PAINT EXISTING ALUMINUM PARAPET CAP | COLOR DARK GRAY |
| 13. | NEW BALLED AND BURLAP SHRUBS IN MULCH BED | |
| 14. | NEW CORNER STREET LIGHT PROVIDED BY CITY OF RICHMOND | COLOR BLACK |
| 15. | NEW RECESSED LIGHT FIXTURE UNDER AWNING | COLOR BLACK |
| 16. | RE-PAINTED EXISTING DOORS | COLOR DARK GRAY |
| 17. | RE-PAINTED EXISTING GUTTER AND DOWNSPOUT | COLOR DARK GRAY |
| 18. | RE-PAINTED ENTIRE EXISTING STAIRS | COLOR BLACK |



RIGHT ELEVATION
 1/4"=1'-0"

DATE	10-20-19
DESCRIPTION	CLIENT REVIEW
SYN	1

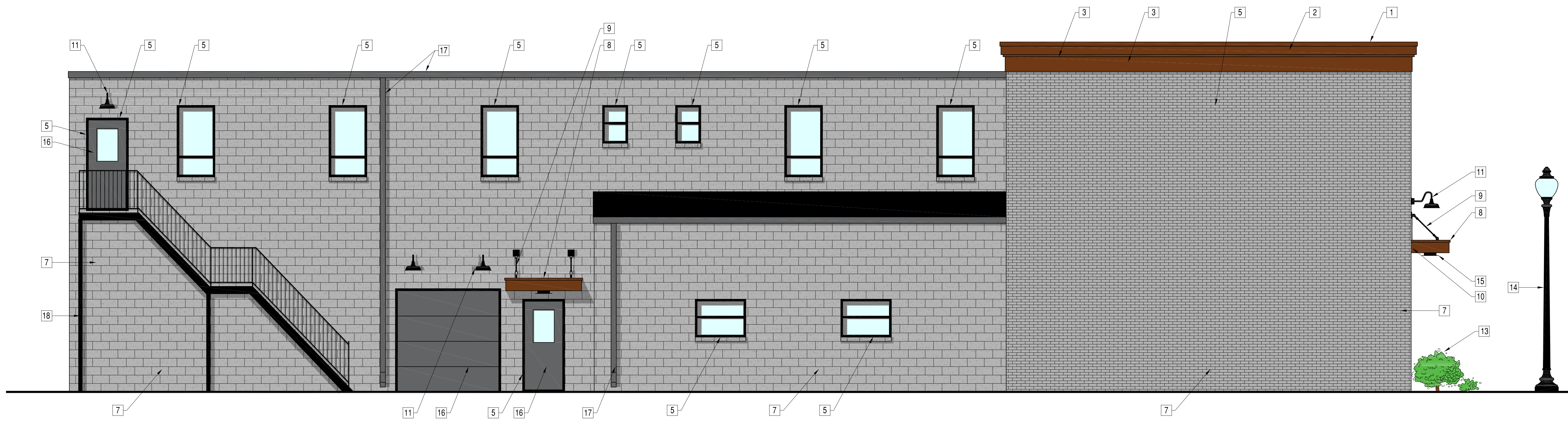
PENN & CO.
 42296 BENFOLD SQUARE
 ASHBURN VA 20148
 (703) 675-4502 PHONE
DESIGN CONSULTANT

The Carpentry & Painting Experts
 3006 LINCOLN AVENUE
 RICHMOND, VA 23228
 (804) 441-8278 PHONE
GENERAL CONTRACTOR

APPROVED	
ACTIVITY	
SATISFACTORY TO DATE	
DES	DRW JRP3 CHK JRP3

409 E LABURNUM AVE EXTERIOR IMPROVEMENTS
 RICHMOND, VIRGINIA 23222
 LEFT AND RIGHT ELEVATIONS

SCALE	1/4"=1'-0"
PROJECT NO.	2019-01
CONSTR. CONTR. NO.	
DRAWING NO.	
SHEET	OF
A-202	



LEFT ELEVATION
 1/4"=1'-0"

BLDG ELEVATION MATERIAL KEYNOTES

1.	ALUMINUM METAL COPING CAP AT PARAPET.	COLOR BROWN
2.	1X12 FASCIA BOARD WITH ALUMINUM TRIM.	COLOR BROWN
3.	1X12 PAINTED FRIEZE BOARD.	COLOR BROWN
4.	TRIM MOULDING.	COLOR BROWN
5.	PAINT EXISTING ALUMINUM FRAMES.	COLOR BLACK
6.	REPLACE EXISTING BROKEN GLASS, TYP WHERE APPLICABLE	
7.	RE-PAINTED EXISTING MASONRY AND SILLS.	COLOR AMAZING GRAY
8.	ALUMINUM AWNING KIT WITH 8" FLAT PANELS	COLOR BROWN
9.	STEEL AWNING BRACES.	COLOR PLACK
10.	WROUGHT IRON BUILDING NUMBER	COLOR BLACK
11.	NEW BARN TYPE EXTERIOR LIGHT FIXTURE	COLOR BLACK
12.	RE-PAINT EXISTING ALUMINUM PARAPET CAP	COLOR DARK GRAY
13.	NEW BALLED AND BURLAP SHRUBS IN MULCH BED	
14.	NEW CORNER STREET LIGHT PROVIDED BY CITY OF RICHMOND	COLOR BLACK
15.	NEW RECESSED LIGHT FIXTURE UNDER AWNING	COLOR BLACK
16.	RE-PAINTED EXISTING DOORS	COLOR DARK GRAY
17.	RE-PAINTED EXISTING GUTTER AND DOWNSPOUT	COLOR DARK GRAY
18.	RE-PAINTED ENTIRE EXISTING STAIRS	COLOR BLACK