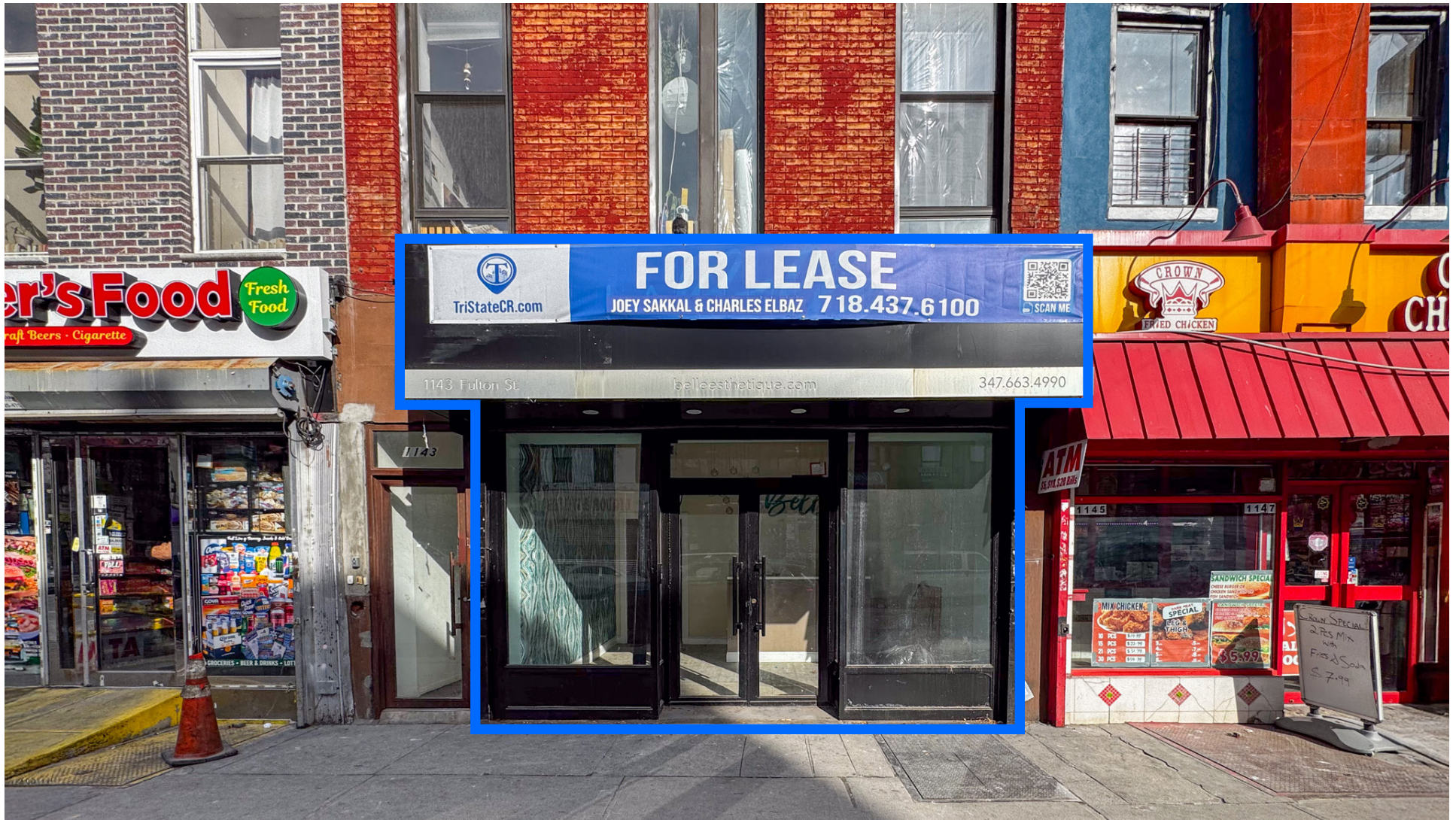


1143 FULTON STREET, BROOKLYN, NY 11238

FOR LEASE

1,300 SF RETAIL SPACE WITH GLASS FRONTAGE & BASEMENT

Between Franklin Avenue & Claver Place



SHLOMI BAGDADI
212.433.3355 x101
sb@tristatecr.com

JOEY SAKKAL
212.433.3355 x208
joey.s@tristatecr.com

CHARLES ELBAZ
212.433.3355 x1014
charles.e@tristatecr.com

TRI STATE COMMERCIAL®

PROPERTY SUMMARY

LOCATION

Located in the Bed-Stuy neighborhood of Brooklyn.

SPACE DETAILS

- Glass Frontage
- Full Usable Basement
- New Steel & Glass Store Front
- New Roll Down Gate

TRANSPORTATION

A C S Trains at Franklin Avenue

B25 B48 B49 B26 B44 B44-SBS Bus Lines

NEIGHBORS

Dunkin', Popeyes Louisiana Kitchen, Metro by T-Mobile, Golda, Hadja Marley, Four Season Liquor & Wines, Imperial Chinese Food Kitchen, Gino's pizza, Doris, Buka, Brooklyn Blooms Floral Boutique HQ, Bed-Stuy Dental Arts, JOCO E-Bikes, and more!



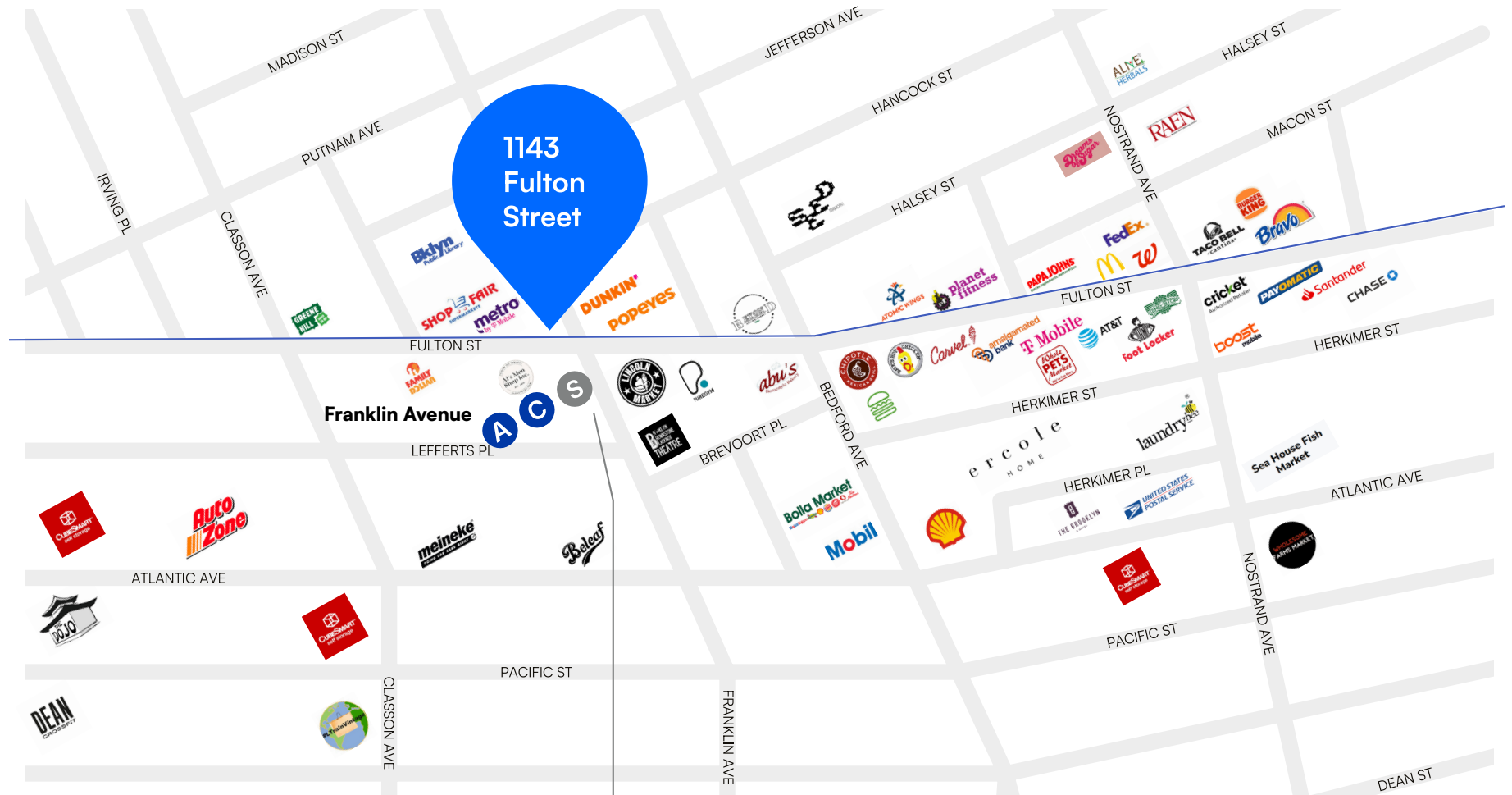
PROPERTY PHOTOS



PROPERTY PHOTOS



RETAIL MAP



1143 FULTON STREET, BROOKLYN, NY 11238

1,300 SF RETAIL SPACE WITH GLASS FRONTAGE & BASEMENT

Between Franklin Avenue & Claver Place

For Pricing Call: **212.433.3355**

SHLOMI BAGDADI
212.433.3355 x101
sb@tristatecr.com

JOEY SAKKAL
212.433.3355 x208
joey.s@tristatecr.com

CHARLES ELBAZ
212.433.3355 x1014
charles.e@tristatecr.com

TSC.