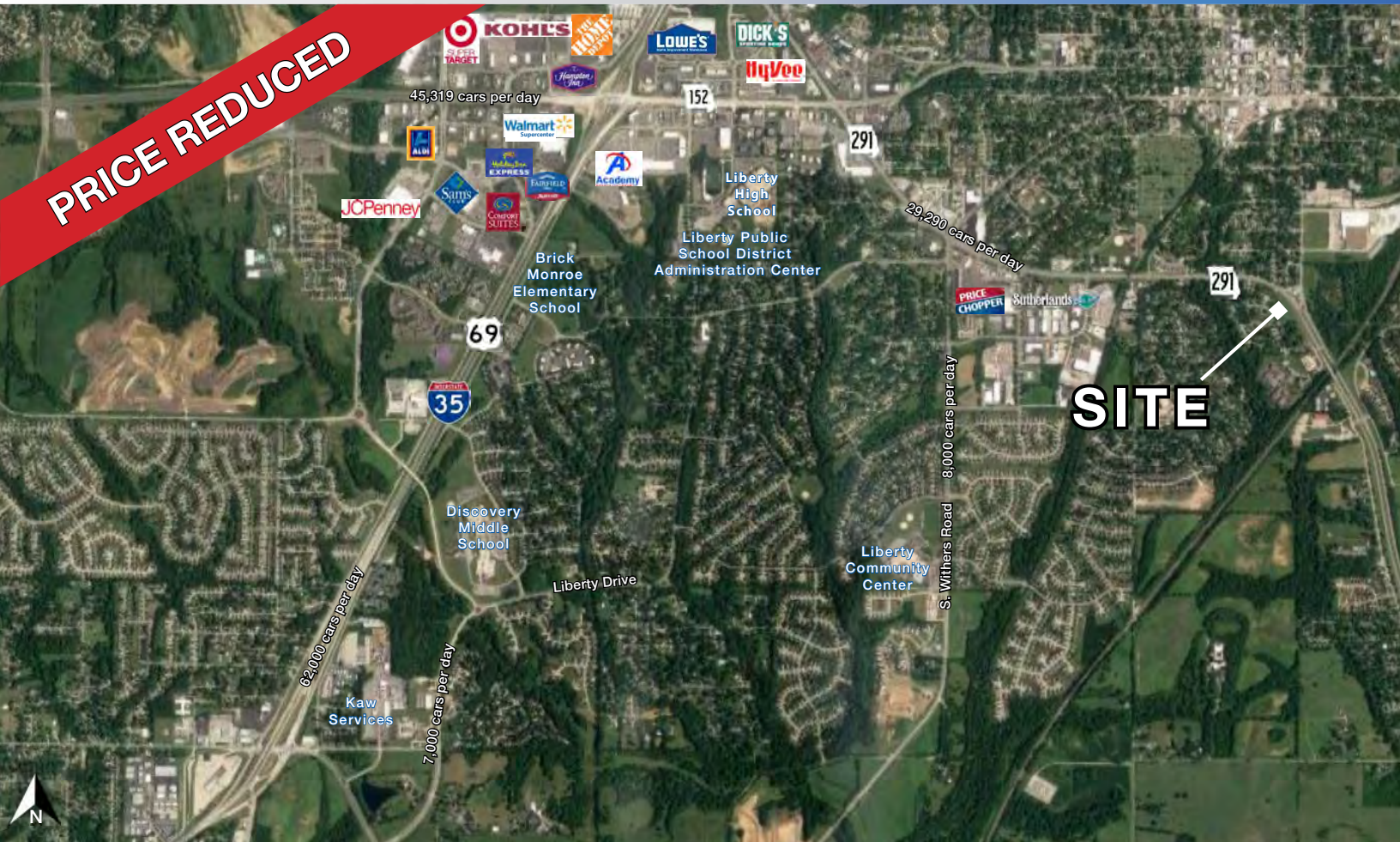




Vacant Unimproved Commercial Land

1100 Missouri Court, Liberty, Missouri



SALE PRICE: \$875,000 | 4.4 +/- ACRES

DEMOGRAPHICS

	1 mile	3 miles	5 miles
Estimated Population	9,120	33,575	63,961
Avg. Household Income	\$100,795	\$119,858	\$137,850

- Great development property on the south edge of Liberty, MO
- Approximately 4.4 acres per Clay County GIS
- Can be divided
- Great traffic counts of over 42,000 cars per day on 291 Highway



CLICK HERE TO VIEW MORE
LISTING INFORMATION

For More Information Contact:

BOB JAEKEL | 816.412.7365 | bjael@blockandco.com

Exclusive Agent

PARCEL MAP





Vacant Unimproved Commercial Land

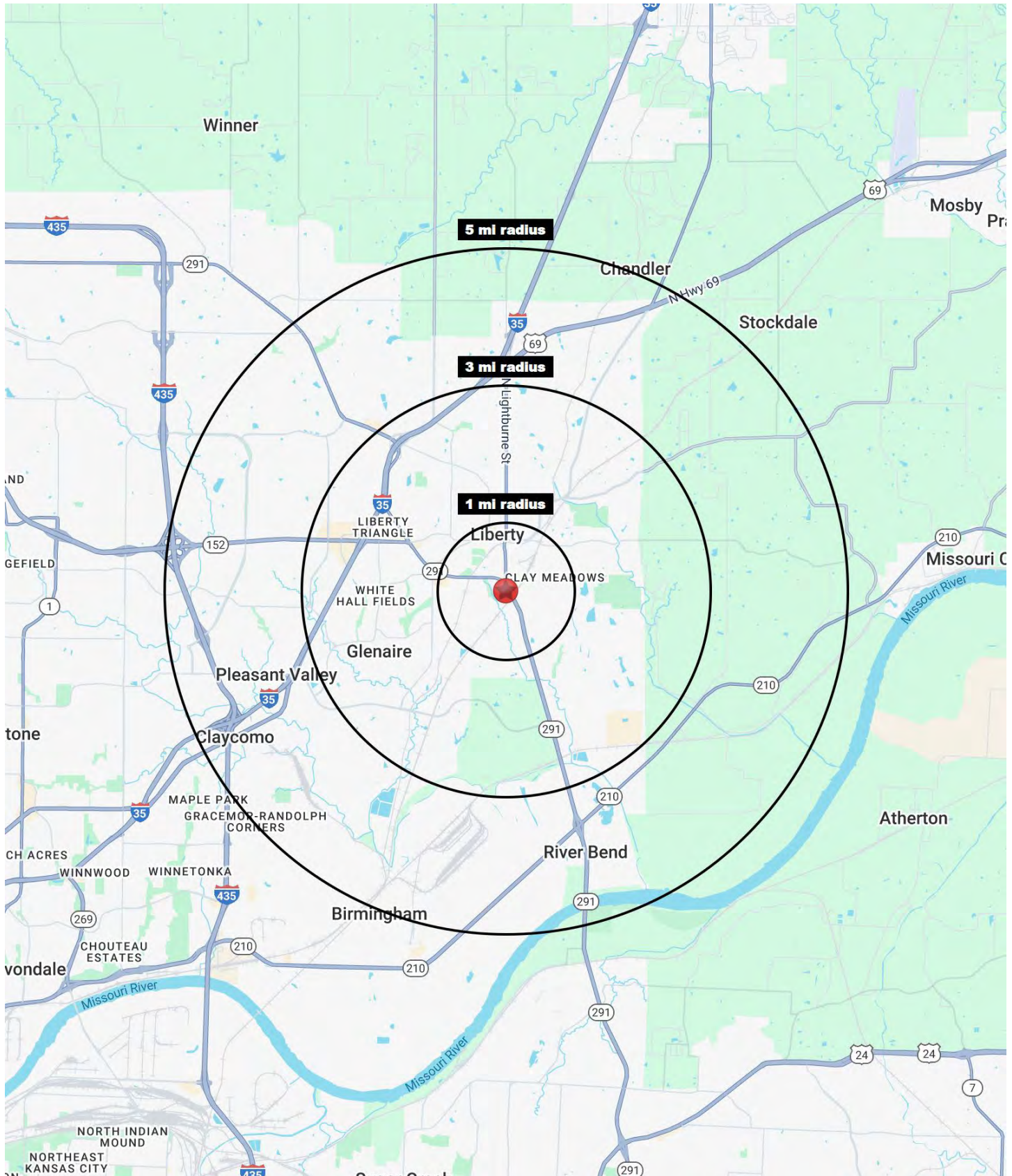
1100 Missouri Court, Liberty, Missouri

PHOTOS



Vacant Unimproved Commercial Land

1100 Missouri Court, Liberty, Missouri





Vacant Unimproved Commercial Land

1100 Missouri Court, Liberty, Missouri

1100 Missouri Court Liberty, MO 64068	1 mi radius	3 mi radius	5 mi radius
Population			
2024 Estimated Population	9,120	33,575	63,961
2029 Projected Population	9,469	34,756	67,190
2020 Census Population	8,716	33,416	62,258
2010 Census Population	8,925	30,950	54,112
Projected Annual Growth 2024 to 2029	0.8%	0.7%	1.0%
Historical Annual Growth 2010 to 2024	0.2%	0.6%	1.3%
2024 Median Age	35.0	38.5	38.0
Households			
2024 Estimated Households	3,502	13,323	24,294
2029 Projected Households	3,676	13,931	25,721
2020 Census Households	3,245	12,689	22,878
2010 Census Households	3,238	11,359	19,621
Projected Annual Growth 2024 to 2029	1.0%	0.9%	1.2%
Historical Annual Growth 2010 to 2024	0.6%	1.2%	1.7%
Race and Ethnicity			
2024 Estimated White	83.7%	84.6%	83.5%
2024 Estimated Black or African American	6.9%	6.4%	6.4%
2024 Estimated Asian or Pacific Islander	1.5%	1.7%	2.5%
2024 Estimated American Indian or Native Alaskan	0.4%	0.3%	0.3%
2024 Estimated Other Races	7.6%	7.1%	7.2%
2024 Estimated Hispanic	6.7%	6.3%	6.7%
Income			
2024 Estimated Average Household Income	\$100,795	\$119,858	\$137,850
2024 Estimated Median Household Income	\$88,534	\$94,774	\$108,443
2024 Estimated Per Capita Income	\$38,855	\$47,719	\$52,454
Education (Age 25+)			
2024 Estimated Elementary (Grade Level 0 to 8)	3.5%	2.0%	2.1%
2024 Estimated Some High School (Grade Level 9 to 11)	3.5%	2.5%	2.5%
2024 Estimated High School Graduate	24.7%	24.2%	23.5%
2024 Estimated Some College	20.9%	21.3%	21.0%
2024 Estimated Associates Degree Only	10.1%	9.7%	9.4%
2024 Estimated Bachelors Degree Only	26.3%	26.1%	27.1%
2024 Estimated Graduate Degree	11.1%	14.1%	14.4%
Business			
2024 Estimated Total Businesses	397	1,469	2,046
2024 Estimated Total Employees	3,003	15,006	20,265
2024 Estimated Employee Population per Business	7.6	10.2	9.9
2024 Estimated Residential Population per Business	23.0	22.9	31.3

©2025, Sites USA, Chandler, Arizona, 480-491-1112 Demographic Source: Applied Geographic Solutions 11/2024, TIGER Geography - RS1