



For Lease

**Lew Manglos, CCIM, SIOR**  
 208 472 2841  
 lew.manglos@colliers.com

**David Cadwell**  
 208 850 3733  
 david.cadwell@colliers.com

---

755 West Front Street, Suite 300  
 Boise, Idaho 83702  
 208 345 9000  
 colliers.com/idaho

# 1450 S Eagle Flight Way Boise, ID

### Highlights:

- Beautiful office building located near Maple Grove & Overland Roads in West Boise
- Great location for office, service or medical users
- Surrounding retailers, restaurants and financial institutions
- Abundant parking

### Space Available

Suite	Size	Rate
125	1,644 SF	\$20.00/SF FSEJ
255	657 SF	\$20.00/SF FSEJ
1450	13,060 SF	\$20.00/SF FSEJ

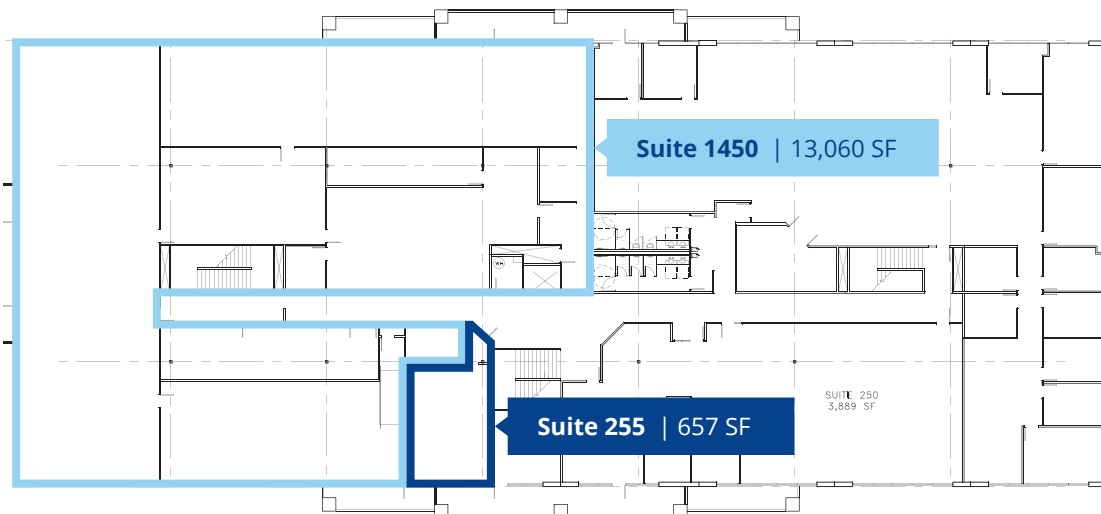
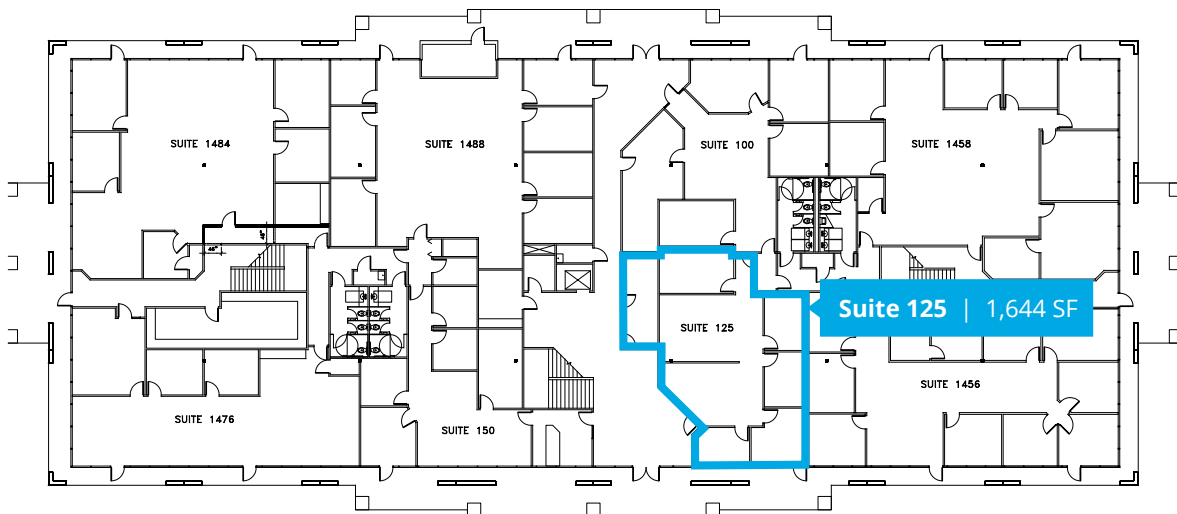
# For Lease

## Property Information

<b>Property Type</b>	Office
<b>Building Size</b>	43,762
<b>Parking</b>	Abundant
<b>Access</b>	Contact Agent



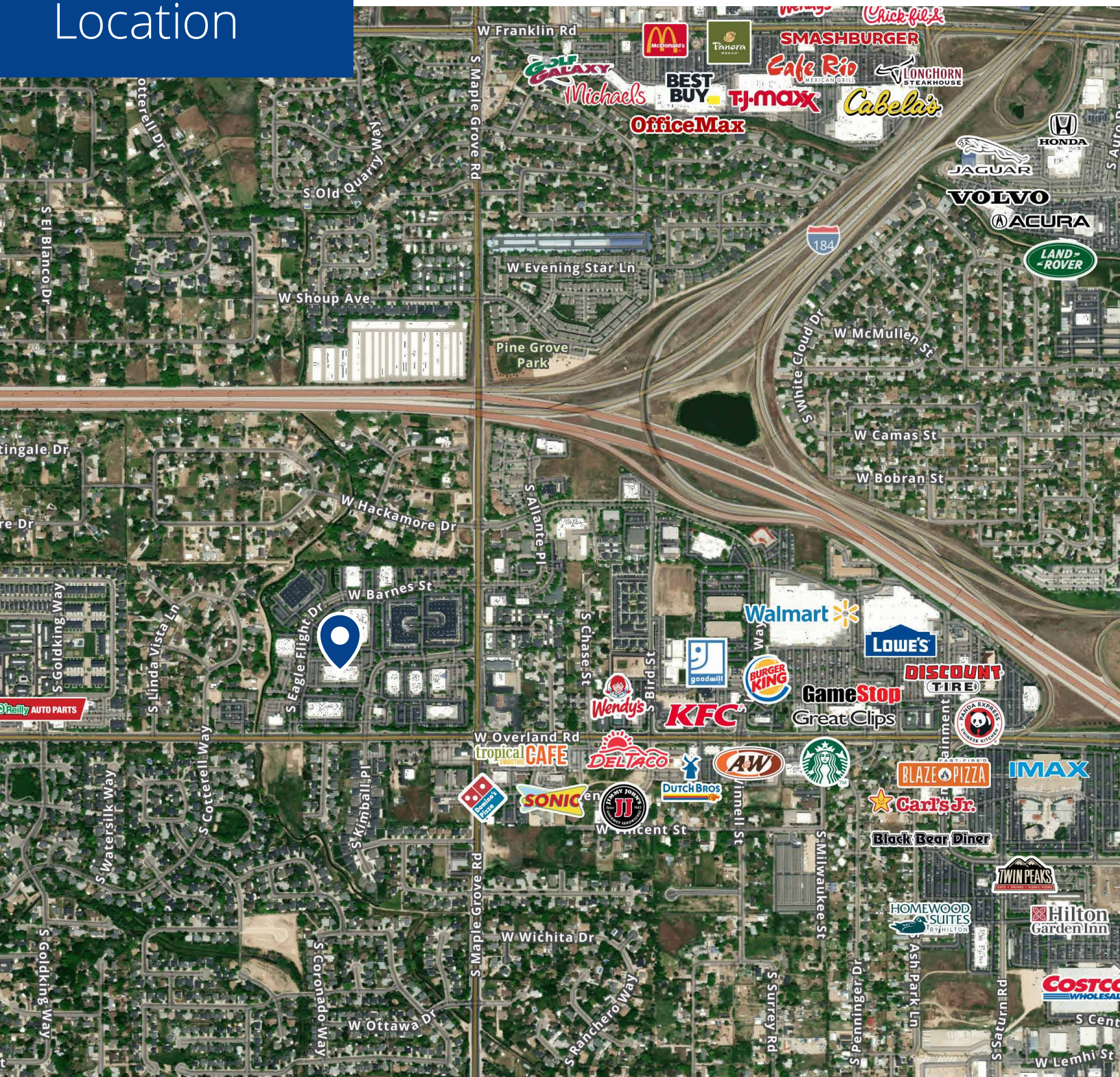
## Floor plan



# Location

 Google Map

 Street View



755 West Front Street, Suite 300  
Boise, Idaho 83702  
208 345 9000  
colliers.com/idaho

This document has been prepared by Colliers for advertising and general information only. Colliers makes no guarantees, representations or warranties of any kind, expressed or implied, regarding the information including, but not limited to, warranties of content, accuracy and reliability. Any interested party should undertake their own inquiries as to the accuracy of the information. Colliers excludes unequivocally all inferred or implied terms, conditions and warranties arising out of this document and excludes all liability for loss and damages arising there from. This publication is the copyrighted property of Colliers and/or its licensor(s). © 2024. All rights reserved. This communication is not intended to cause or induce breach of an existing listing agreement. Colliers Treasure Valley, LLC.