



±28,000 SF INDUSTRIAL SPACE FOR LEASE

925 Berry Shoals Rd, Suite B
Duncan, SC



LEE & ASSOCIATES
GREENVILLE/SPARTANBURG

Jordan Skellie, SIOR
EVP/Principal
864.238.2188
jskellie@lee-associates.com

Andrew Harrill, CCIM
Senior Vice President
864.607.7223
aharrill@lee-associates.com

864.704.1040
LeeUpstate.com

Lease Rate:
\$8.50/SF
(NNN)

- ±28,000 SF Available
- Office Space: ±735 SF
- Warehouse SF: ±27,265 SF
- Located Right off Hwy 101
- ±1.8 miles to I-85



DOCK DOORS
FOUR (4) 8' X 10' WITH
EOD LEVELERS



DRIVE-IN DOORS
ONE (1) 12' X 14'



INTERSTATE ACCESS
±1.8 MILES FROM I-85



SPRINKLER
100% SPRINKLERED

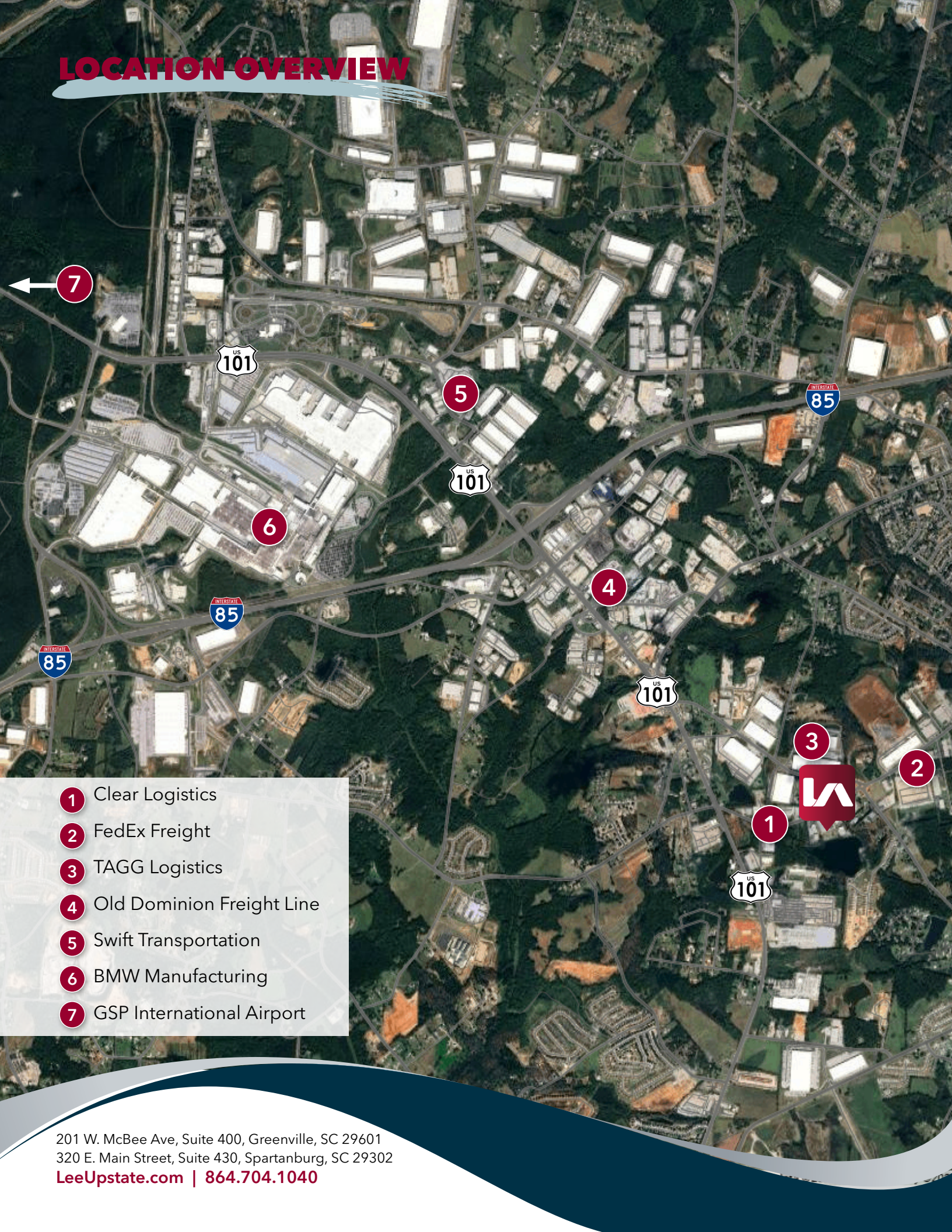
PROPERTY OVERVIEW & PHOTOS

PROPERTY NAME	925 Berry Shoals Road Suite B
TYPE	Industrial
TOTAL AVAILABLE SF	±28,000 SF
TOTAL BUILDING SF	±50,000 SF
TAX MAP #	5-36-00-025.04
COUNTY	Spartanburg
CITY LIMITS	No
ZONING	PZO Area - Industrial Use Allowed
YEAR BUILT	1999

CONSTRUCTION TYPE	Metal
OFFICE SF	±735 SF
CEILING HEIGHT	Eave: 14' Clear: 20'
DOCK DOORS	(4) 8' x 10' EOD Levelers
DRIVE-IN DOORS	(1) 12' x 14'
COLUMN SPACING	50' W x 30' L
LIGHTING	Skylights / Fluorescent
SPRINKLERS	Yes, 100%



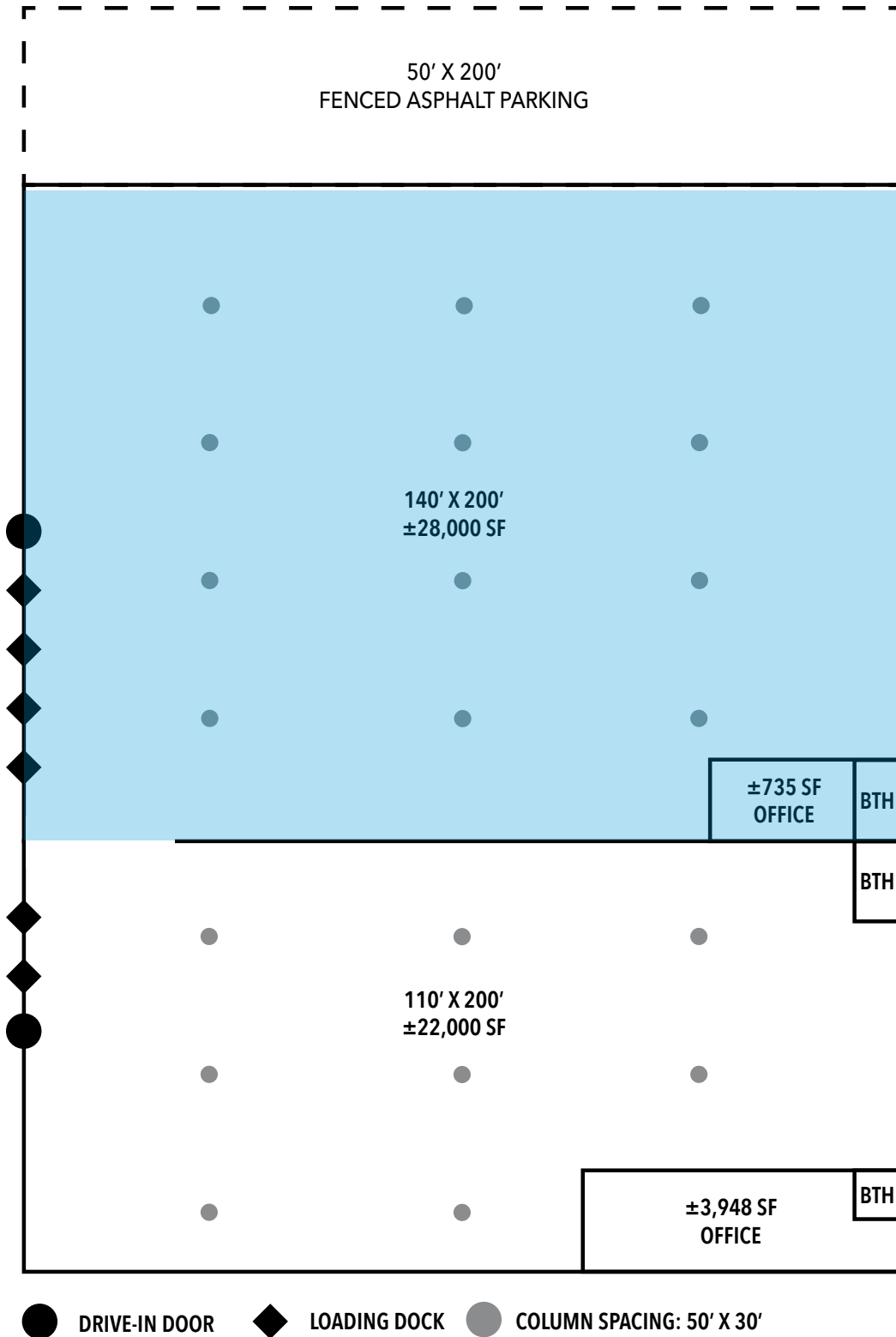
LOCATION OVERVIEW



- 1 Clear Logistics
- 2 FedEx Freight
- 3 TAGG Logistics
- 4 Old Dominion Freight Line
- 5 Swift Transportation
- 6 BMW Manufacturing
- 7 GSP International Airport

201 W. McBee Ave, Suite 400, Greenville, SC 29601
320 E. Main Street, Suite 430, Spartanburg, SC 29302
LeeUpstate.com | 864.704.1040

FLOOR PLAN





LEARN MORE GIVE US A CALL



LEE & ASSOCIATES
GREENVILLE/SPARTANBURG

864.704.1040
LeeUpstate.com

GREENVILLE OFFICE

201 W. McBee Ave, Suite 400
Greenville, SC 29601

SPARTANBURG OFFICE

320 E. Main Street, Suite 430
Spartanburg, SC 29302

All information furnished regarding the properties and information in this packet is from sources deemed reliable, but no warranty or representation is made to the accuracy thereof and same is submitted to errors, omissions, change of price, rental or other conditions prior to sale, lease or financing or withdrawal without notice. No liability of any kind is to be imposed on the broker herein.



Jordan Skellie, SIOR
EVP/Principal
864.238.2188
jskellie@lee-associates.com



Andrew Harrill, CCIM
Senior Vice President
864.607.7223
aharrill@lee-associates.com