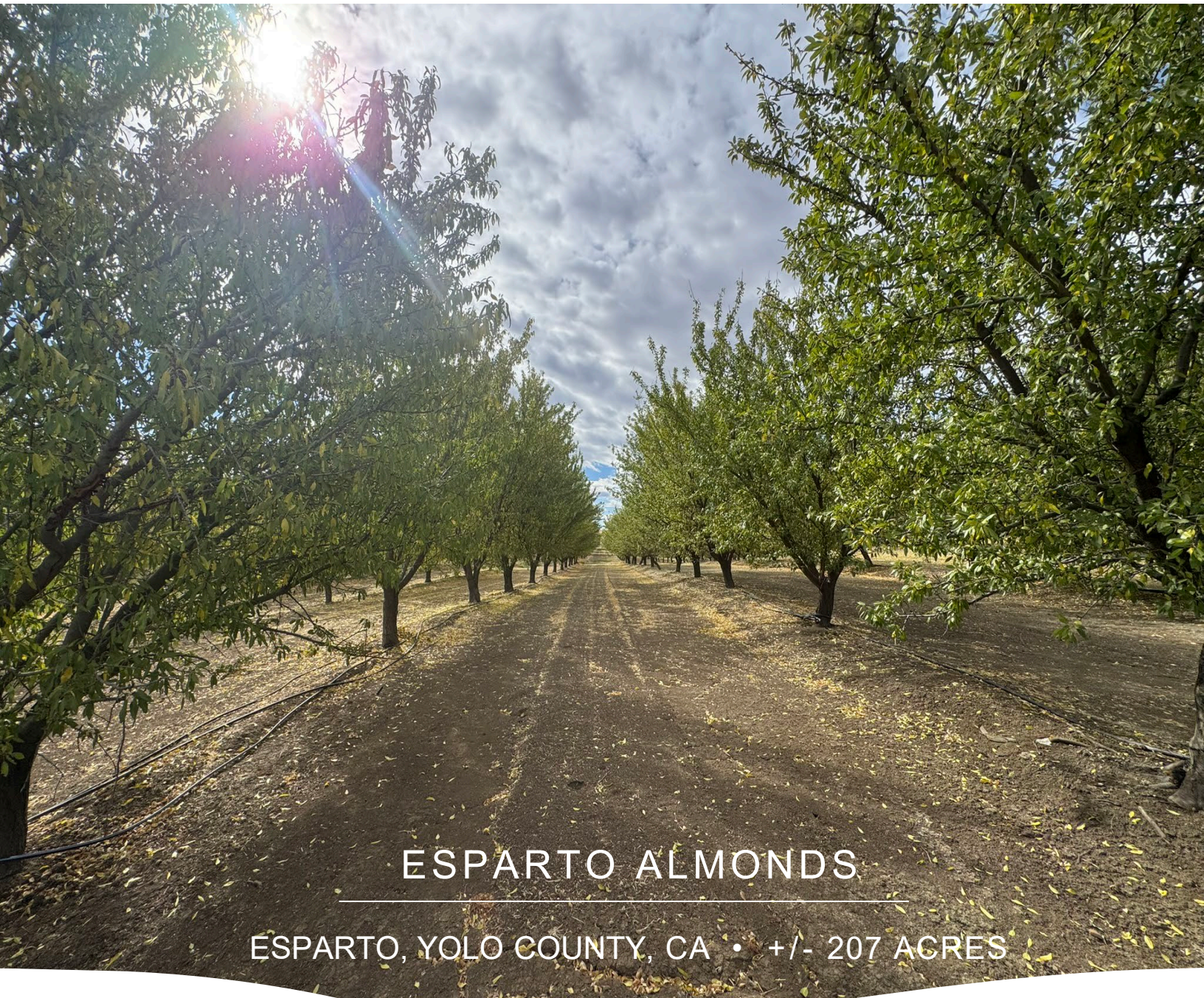




**AG LAND** REAL ESTATE



## ESPARTO ALMONDS

---

ESPARTO, YOLO COUNTY, CA • +/- 207 ACRES

**LAKH BAINS**  
LISTING AGENT

**PHONE** (530) 747-7772  
**EMAIL** [Lbains@aglandre.com](mailto:Lbains@aglandre.com)



# PROPERTY OVERVIEW

+/- 207 ACRES GROSS  
OFFERED AT  
\$3,999,250.00  
(\$19,320/ACRE)

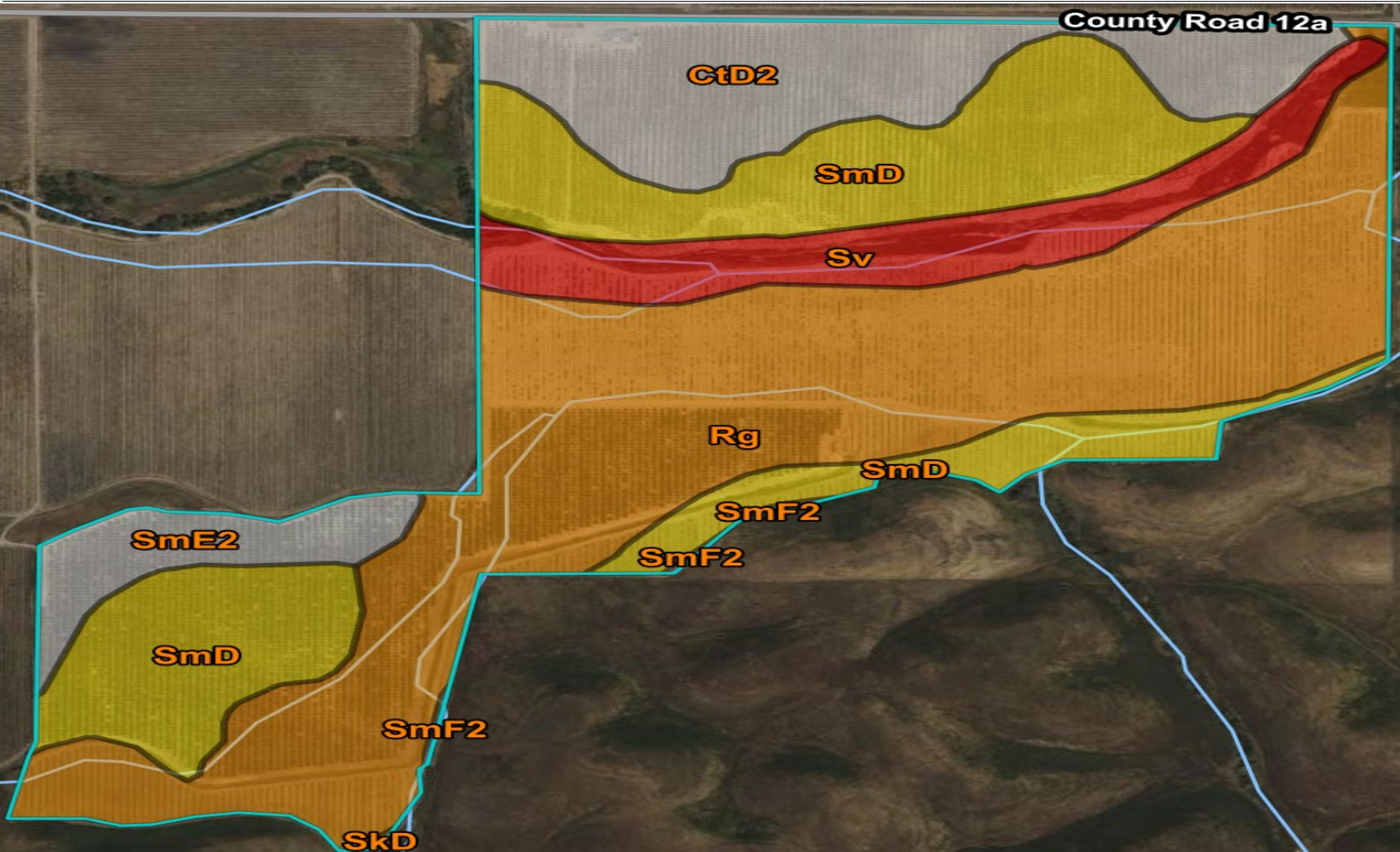
The Esparto Ranch is located in Yolo County just Southwest of the Road 12A and I-505 exit on Road 12A in Esparto. The +/- 207 acres consists of a +/- 160 acre almond orchard, a small house and open land. Located in a serene environment with hills and views of vineyards.

The ranch provides a diverse planting of almonds with 3 different blocks at 3 different ages. Rental income from the house (\$2k per month) and the two producing blocks of +/- 40 acres (11<sup>th</sup> leaf) and +/-50 acres (5<sup>th</sup> leaf) almonds help provide income while the newly planted +/- 70 acres comes into production for the property to transform into a real producer.





# SOIL MAP

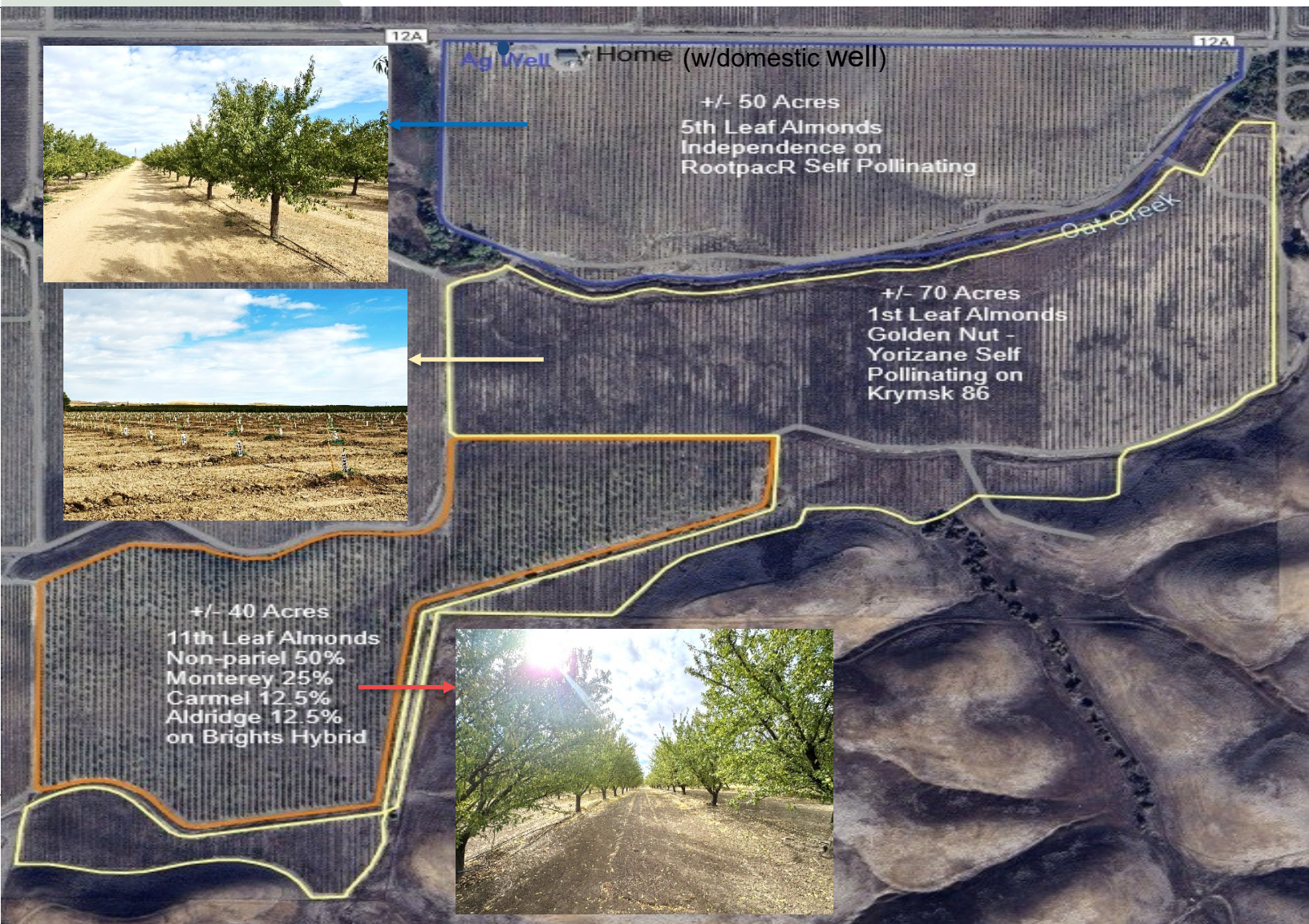


**SOILS** Sycamore complex Class 1 10%, Rincon silty clay loam Class 2 45%, Sehorn-Balcom complex Class 3 26%, Corning gravelly loam NIRR Class 14%, Others 5%





# VARIETIES MAP/ WATER INFO



**AG WELL** New JD Diesel Engine and updated and expanded Filtration System. PG&E Electric at Rd 12A and Service Pole at Ag Well.



## IRRIGATION

Dual Line Drip and remaining acreage Dual Line Drip Ready.



## VARIETIES

See Map Above





# AERIAL/PARCEL MAP



**PARCELS** The property consists of 3 parcels in Yolo County. Yolo County APN #'s: 054-110-015, 054-100-014 and 054-140-010.

## EXISTING ALMOND FIELDS

The existing blocks of almonds have been treated with TLC over the last year of new management, including; extra amendments, increased water and manual labor to remove debris and weeds and additional maintenance. This will benefit the future owner by purchasing this property on it's upward trajectory and return to full production while the young new block get's ready for a full life of producing a solid crop for it's new owner.

## NEW PLANTING

The re-development of the +/- 70 acre newly planted almond block was completed meticulously and professionally; including pre-planting prep work of leveling, deep ripping, discing, tri-planning, berming and the repairing and modifying of the irrigation system. Extensive ditch work and deepening completed and several new crossings added.



ORCHARD SPECIALISTS  
FARM LAND SALES AND LEASING  
AGRICULTURAL INVESTMENTS  
AG INDUSTRIAL PROPERTIES



**AG LAND** REAL ESTATE

**FOR MORE INFO CALL:  
(530) 747-7772**