

# 3125 Garner Station Blvd.

FLEX SPACE FOR LEASE - RALEIGH, NC



**NATRI** PROPERTIES



# FLEX SPACE

ADDRESS: 3125 Garner Station Boulevard  
Raleigh NC 27603

BUILDING SIZE: 8,000 SF

AVAILABLE SPACE: 4,000 SF

RENTAL RATE: \$18.50/PSF, NNN \$2.25/PSF

CEILING HEIGHT: 16'

FEATURES: ±500 SF Office Space  
Skylights in warehouse  
2 - 12'x12' drive-in doors  
Ample parking  
Excellent condition

ACCESS: Easy access to 401 S, HWY 70, Tryon Rd.  
and I-440 Beltline





# EXTERIOR



## CONTACT

JOAQUIN CANALS | 919.714.7124 | [JCANALS@TRIPROP.COM](mailto:jcanals@triprop.com)

All information provided herein is from sources deemed reliable. However, all information is subject to verification. NAI Tri Properties does not independently verify nor warrant the accuracy of the information.

**NAI**TRI PROPERTIES



# INTERIOR



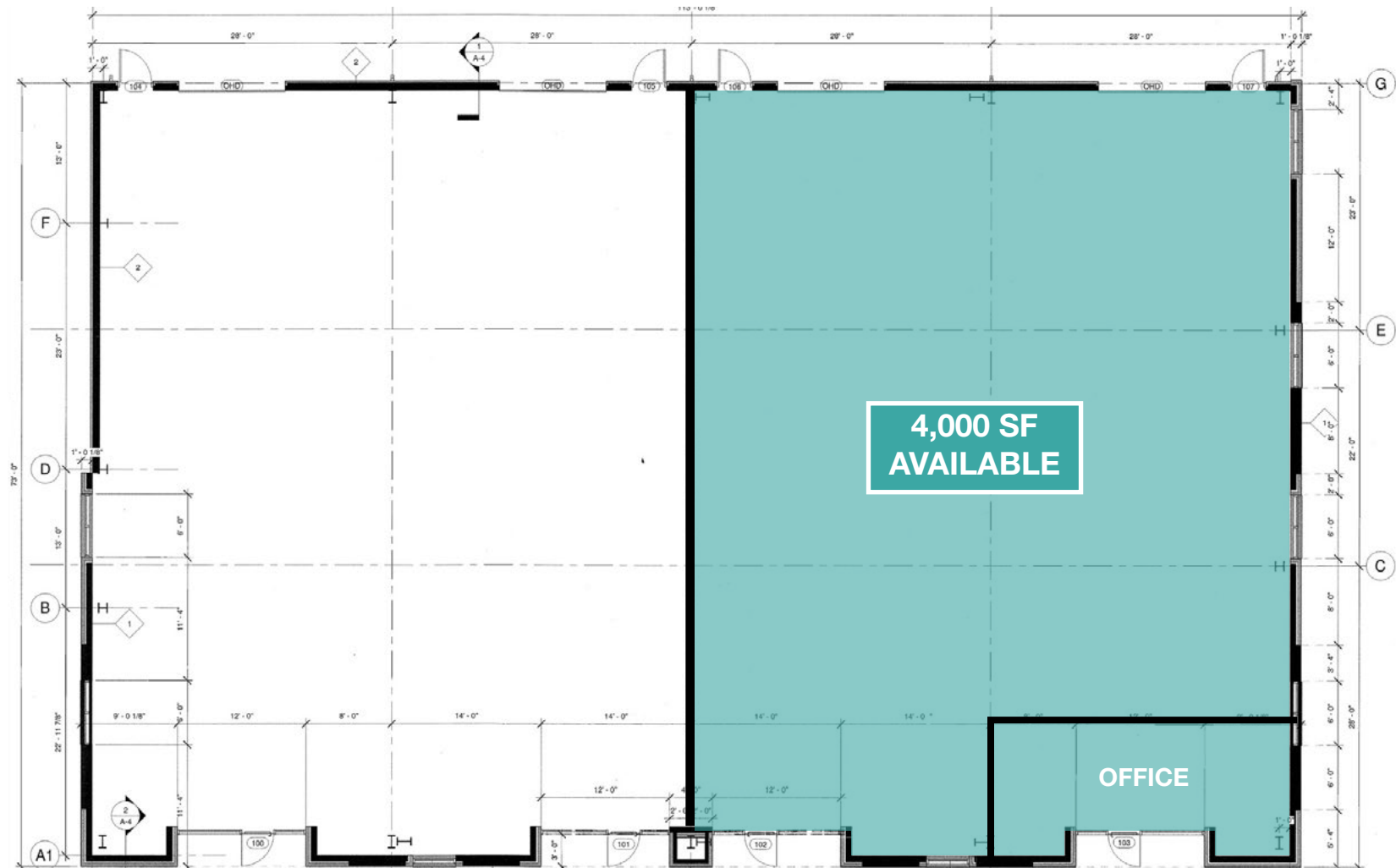
## CONTACT

JOAQUIN CANALS | 919.714.7124 | JCANALS@TRIPROP.COM

All information provided herein is from sources deemed reliable. However, all information is subject to verification. NAI Tri Properties does not independently verify nor warrant the accuracy of the information.

**NAI**TRI PROPERTIES

# FLOOR PLAN



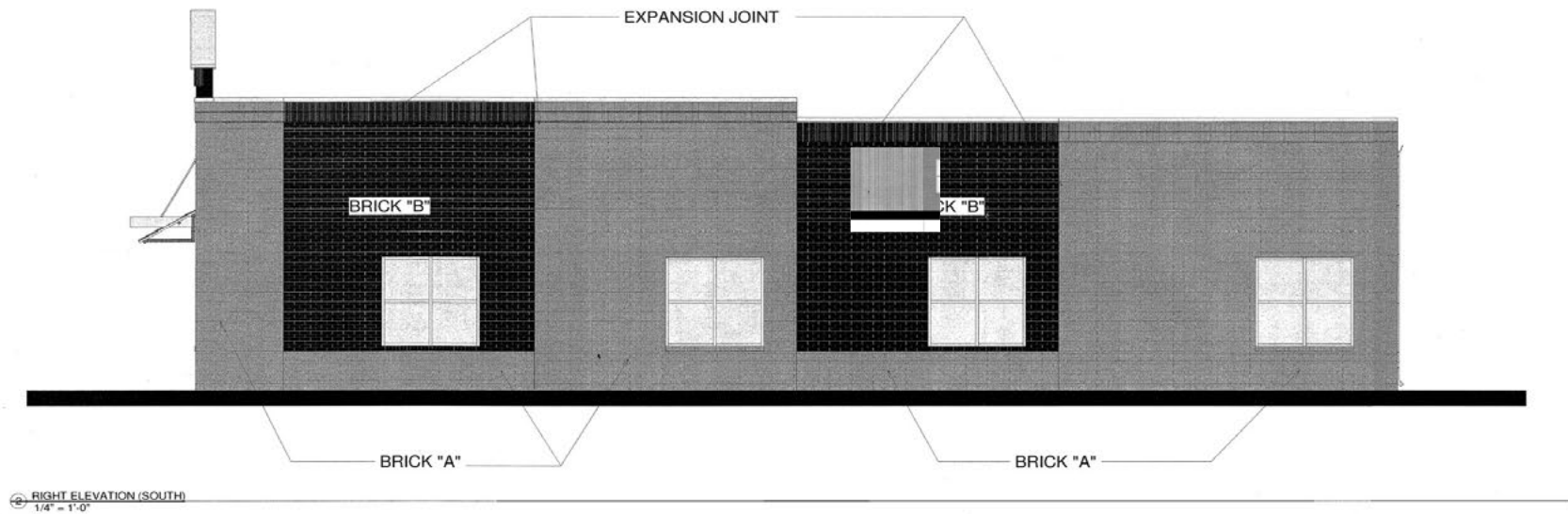
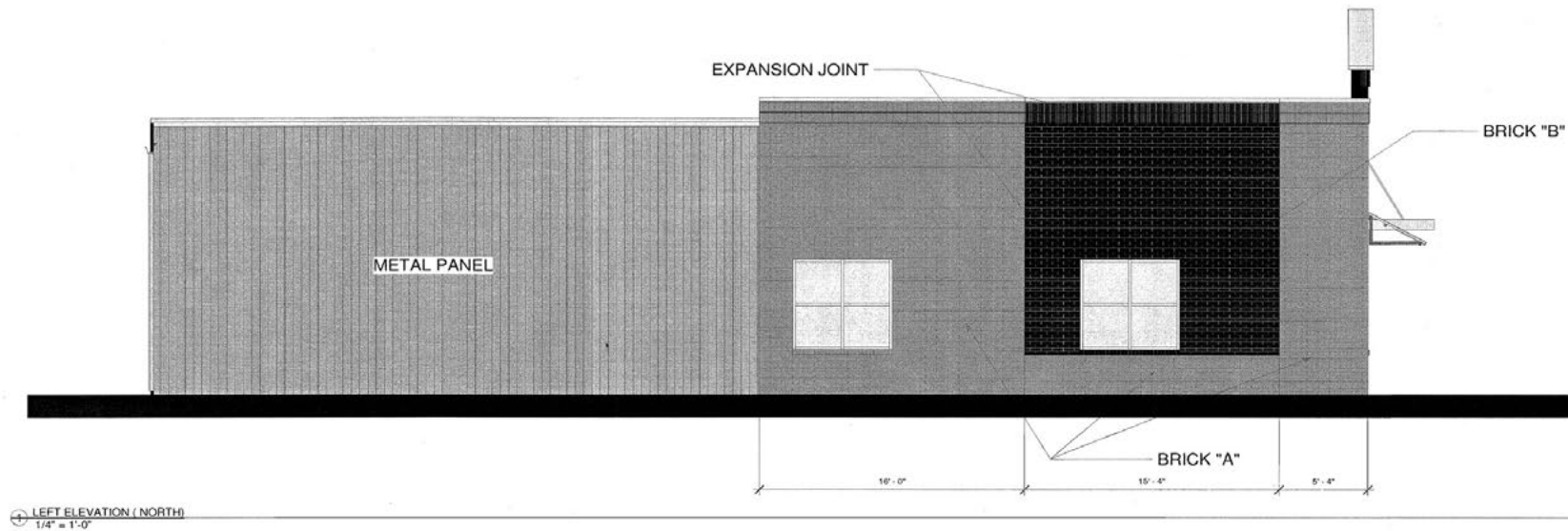
## CONTACT

JOAQUIN CANALS | 919.714.7124 | JCANALS@TRIPROP.COM

All information provided herein is from sources deemed reliable. However, all information is subject to verification. NAI Tri Properties does not independently verify nor warrant the accuracy of the information.

**NAI** TRI PROPERTIES

# BUILDING ELEVATIONS



## CONTACT

JOAQUIN CANALS | 919.714.7124 | JCANALS@TRIPROP.COM

All information provided herein is from sources deemed reliable. However, all information is subject to verification. NAI Tri Properties does not independently verify nor warrant the accuracy of the information.

**NAI**TRI PROPERTIES



# BUILDING ELEVATIONS



## CONTACT

JOAQUIN CANALS | 919.714.7124 | JCANALS@TRIPROP.COM

All information provided herein is from sources deemed reliable. However, all information is subject to verification. NAI Tri Properties does not independently verify nor warrant the accuracy of the information.

**NAI**TRI PROPERTIES



# LOCAL AREA



## CONTACT

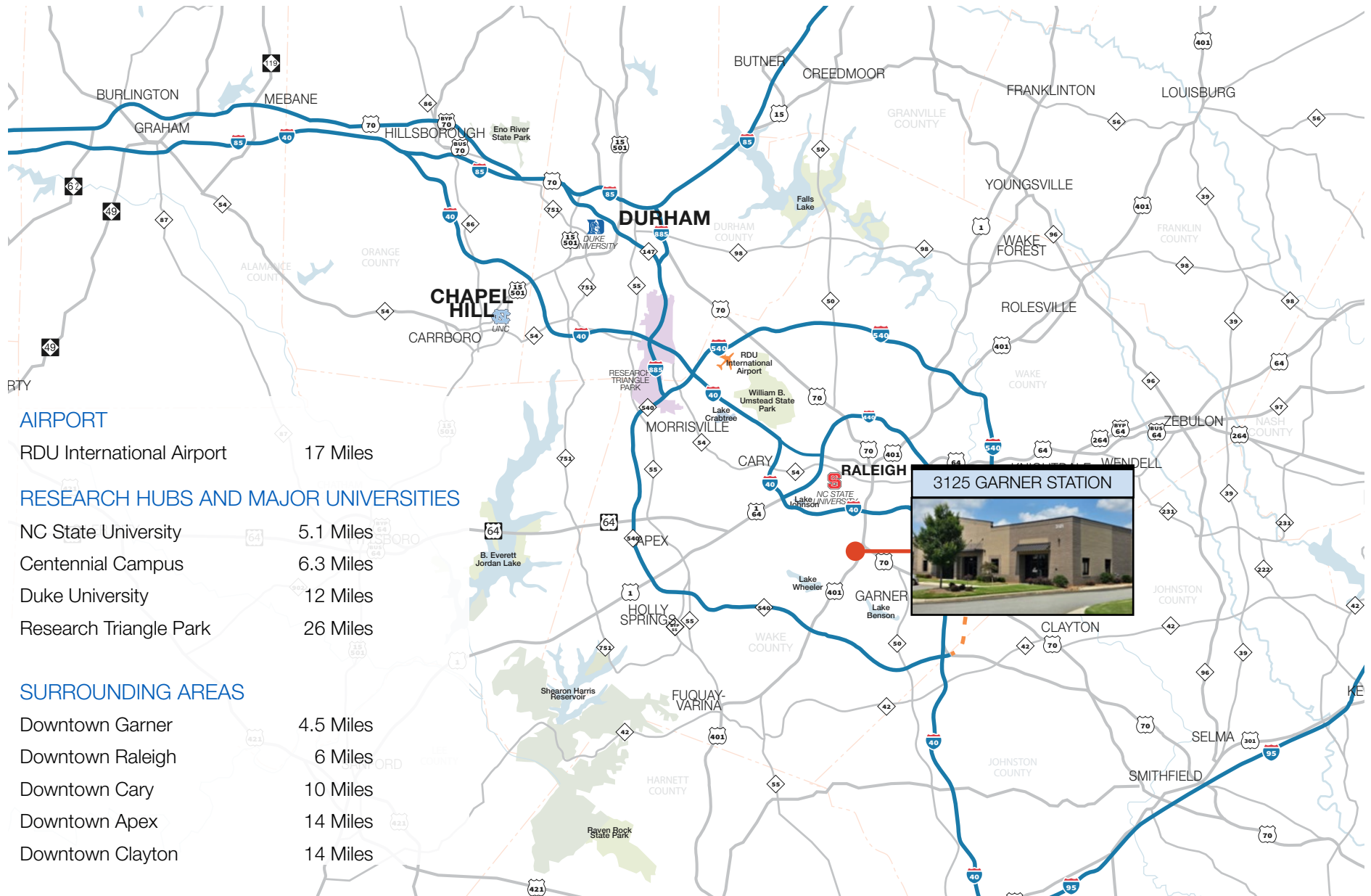
JOAQUIN CANALS | 919.714.7124 | jcanals@triprop.com

All information provided herein is from sources deemed reliable. However, all information is subject to verification. NAI Tri Properties does not independently verify nor warrant the accuracy of the information.

**NAI** TRI PROPERTIES



# TRIANGLE REGION



## CONTACT

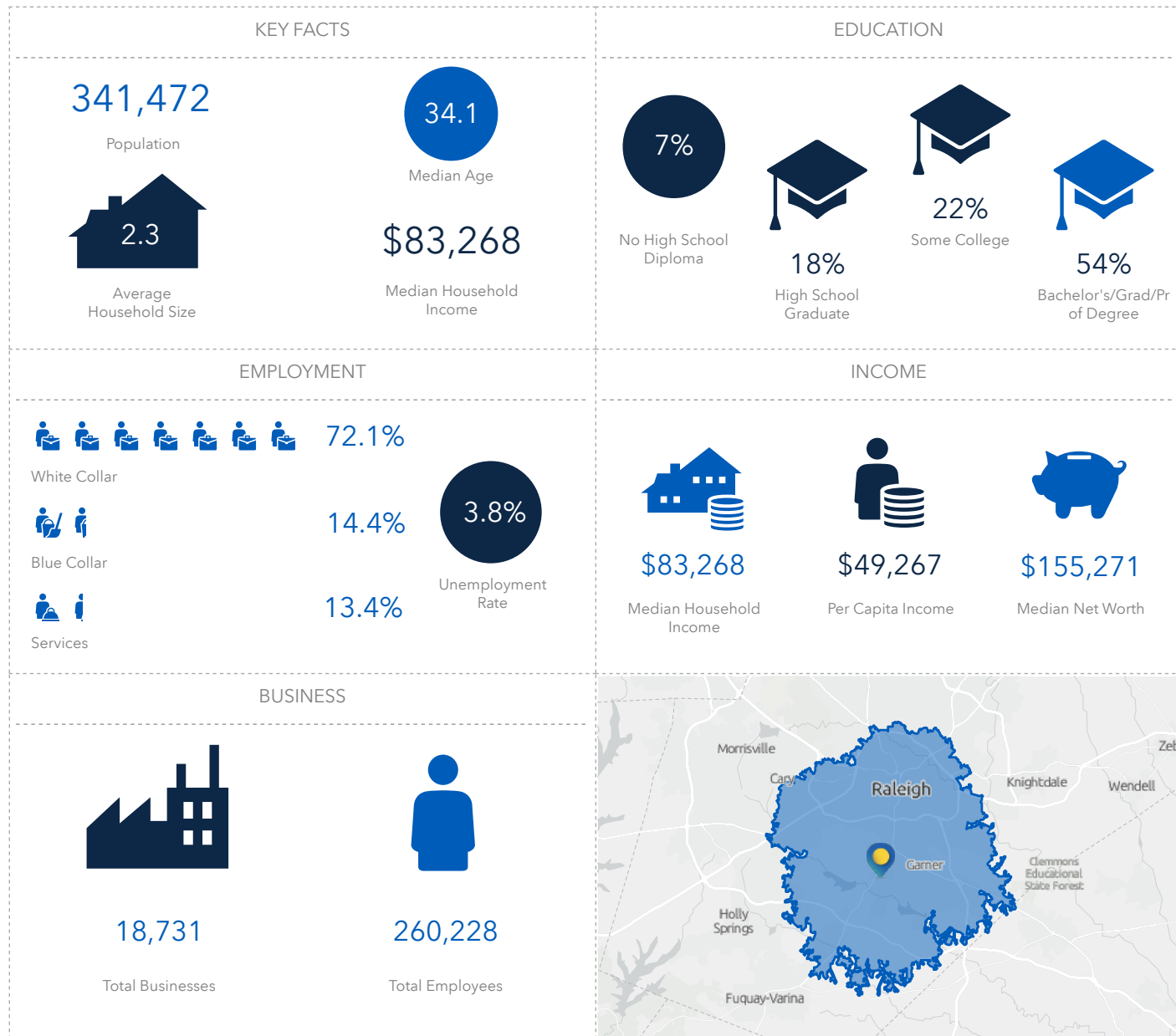
JOAQUIN CANALS | 919.714.7124 | JCANALS@TRIPROP.COM

All information provided herein is from sources deemed reliable. However, all information is subject to verification. NAI Tri Properties does not independently verify nor warrant the accuracy of the information.

**NAI TRI PROPERTIES**



# DEMOGRAPHICS - 5 MILE



## CONTACT

JOAQUIN CANALS | 919.714.7124 | JCANALS@TRIPROP.COM

All information provided herein is from sources deemed reliable. However, all information is subject to verification. NAI Tri Properties does not independently verify nor warrant the accuracy of the information.

**NAI**TRI PROPERTIES