

# FOR LEASE

## 606 N. SAGINAW - RIVERVIEW PROFESSIONAL BUILDING



**GREAT LOCATION AND BEST LEASE RATES IN DOWNTOWN LAPEER**

**606 N. SAGINAW  
LAPEER, MI 48446**

### PROPERTY HIGHLIGHTS:

- Affordable office rentals in downtown Lapeer...walk to restaurants and shopping
- Individual offices, or multiple offices available from 214 feet and up
- Private, off-street parking
- Lease rate on a per office basis includes all taxes, insurance, CAM, and utilities
- New ownership renovating the building
- Walk to Lapeer County Courthouse
- Common area restrooms and two kitchens open to all tenants
- Monument signage available for larger tenants

The information provided herein along with any attachment(s) was obtained from sources believed to be reliable, however, Friedman Real Estate makes no guarantees, warranties, or representations as to the completeness or accuracy of such information and legal counsel is advised. All information provided is subject to verification and no liability for reliance on such information or errors or omissions is assumed. The presentation of this property is submitted subject to errors, omissions, change of price or conditions, prior sale or lease, or withdrawal without notice. Copyright © 2024 Friedman Real Estate. All rights reserved.

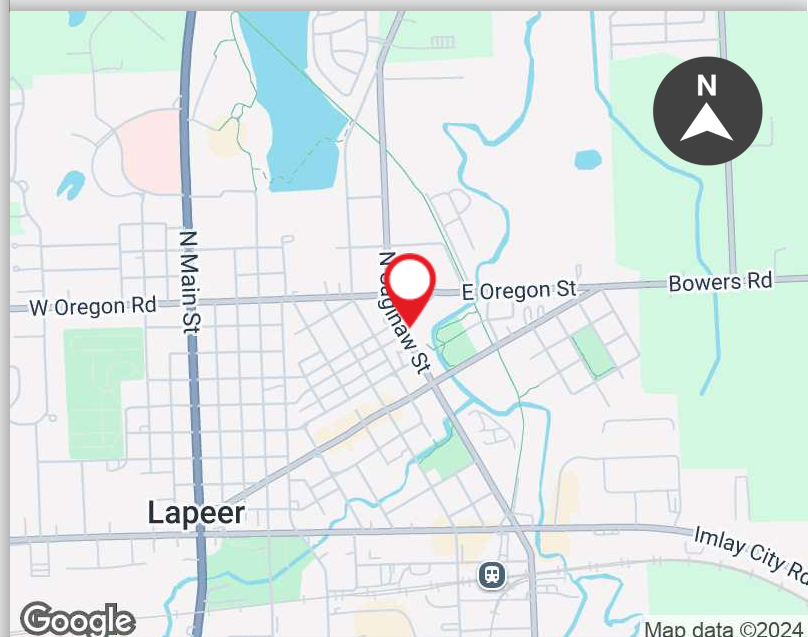
FOR MORE INFORMATION PLEASE CONTACT:



**LARRY SCHULTZ**  
larry.schultz@freg.com

**248.324.2000**

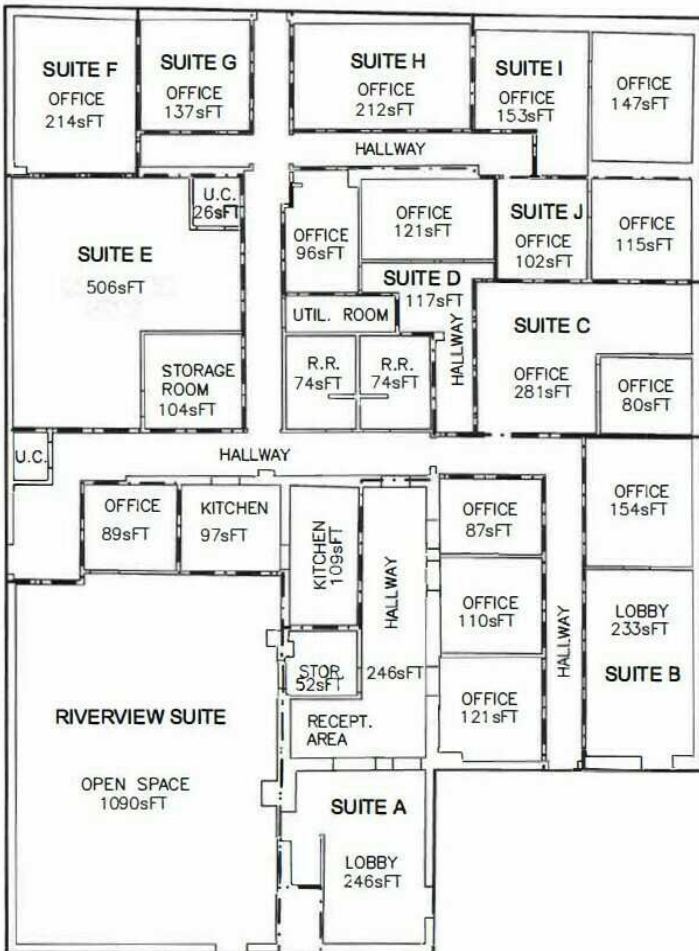
**eCODE 302**





# 606 N. SAGINAW - RIVERVIEW PROFESSIONAL BUILDING

## PROPERTY **AVAILABILITY**



### AVAILABLE SPACES

SUITE	SF	MONTHLY RATE
Suite F	214 SF	\$350 - True Gross
Suite I*	300 SF	\$475 - True Gross
Suite J	217 SF	\$360 - True Gross
River View Suite	1,090 SF	\$1,475 - True Gross

\*To Be Built to Tenant Specifications

