

# For Sublease

4201 Congress St | Charlotte, NC  
Suite 250 - 5,554 SF

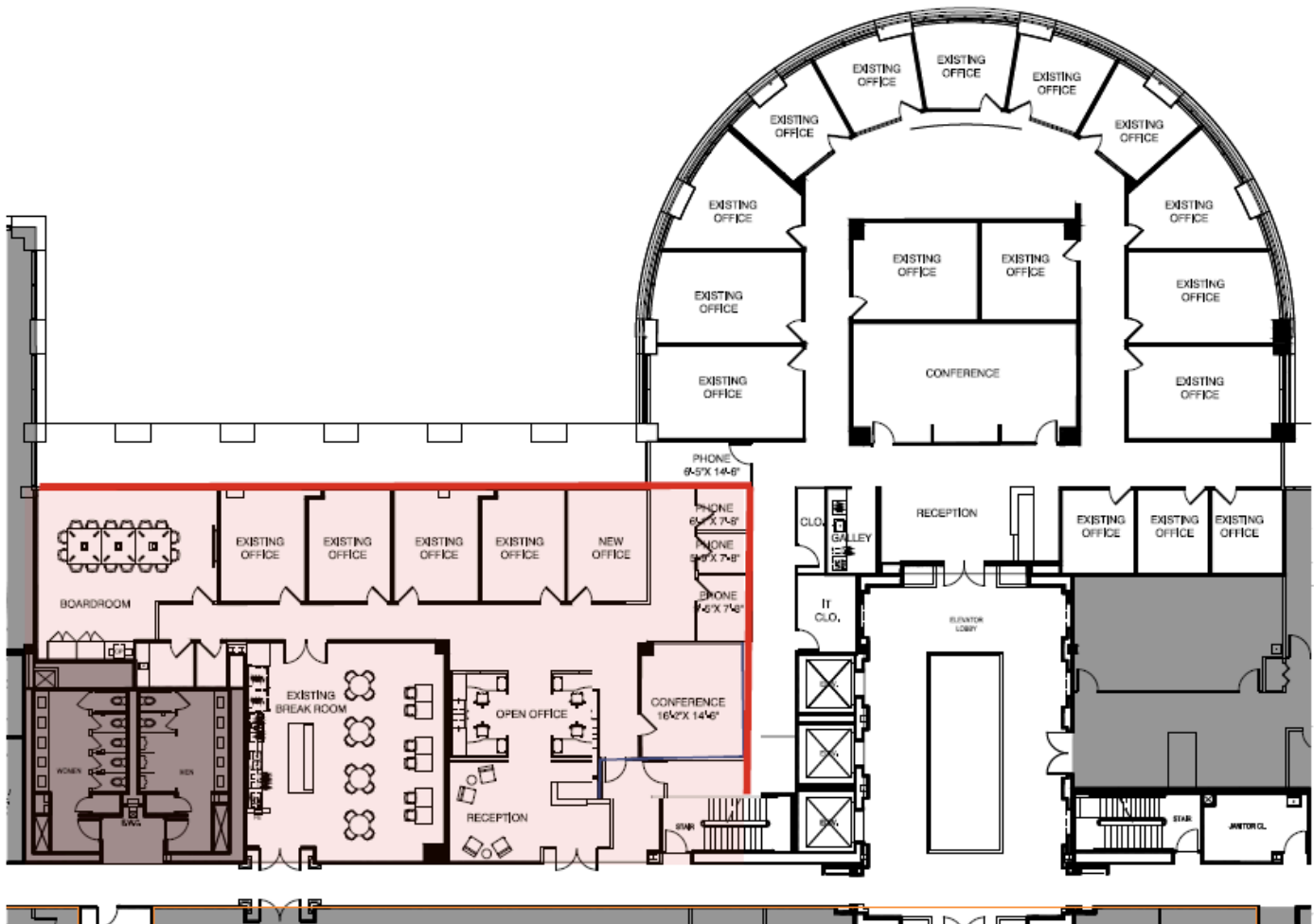


# Property Specifications

## Suite 250 at the Rotunda Building

- 5,554 SF Available Immediately
- Lease Expiration: 7/31/2027
- FF&E Included
- Parking: FREE surface and underground deck parking, 3.30/1,000 SF

**The Rotunda features on-site property management, a tenant lounge with outdoor patio seating, and the convenience of the new Laurel Park restaurant.**







Patrick Byrnes  
 Patrick.Byrnes@jll.com  
 +1 201 274 9827

MaryKate Kalinock  
 MaryKate.Kalinock@jll.com  
 +1 443 474 4446