



PROFESSIONAL OFFICE FOR LEASE

SCAN ME



This space is exceptionally well-partitioned, efficiently designed to maximize usability. It features seven distinct rooms, making it ideal for accommodating a large number of workers or patients within a compact area. The layout is highly functional, ensuring each room can serve as a dedicated workspace while maintaining comfort, privacy and maximizing productivity in a small footprint; all at an exceptional price.

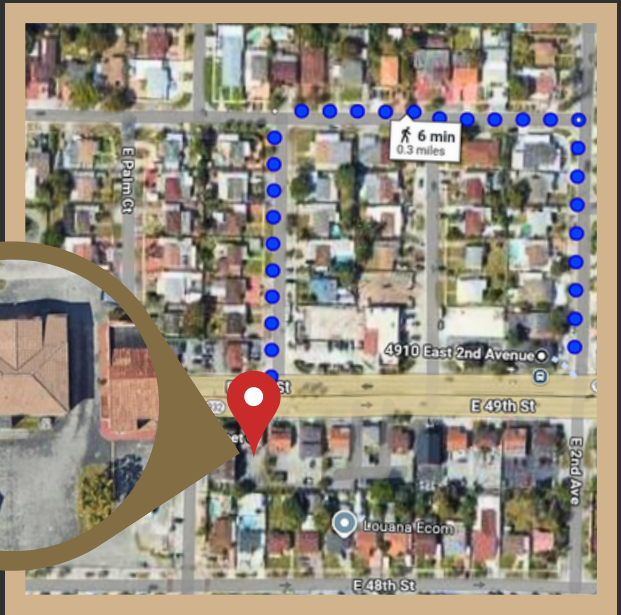
This building comes with an intercom connected throughout the office as well as a camera system. The zoning allows for professional services [possibly including Daycare, Medical, Business, etc].



AFFORDABLE LEASE FOR A WELL-PARTITIONED PROFESSIONAL SPACE

Offered at

\$3,100



FEATURES & AMENITIES

- Standalone Building
- Camera System Wiring
- 1,195 sq. ft. Living Area
- Audio Intercom
- High-Traffic Area
- 6,877 sq. ft. Lot Size



FLOOR PLAN

- 1 Floor
- 9 Office Rooms
- 1 Bathroom

StrikeRealty



GABRIEL AMEDEE
CEO, CLHMS



DESI RODRIGUEZ
Broker, CLHMS, MSIRE

CONTACT US



(305)-646-9939



info@listwithstrikerealty.com



strikerealty.com

Call us any day, any time.
Brokers are OPEN 24/7.