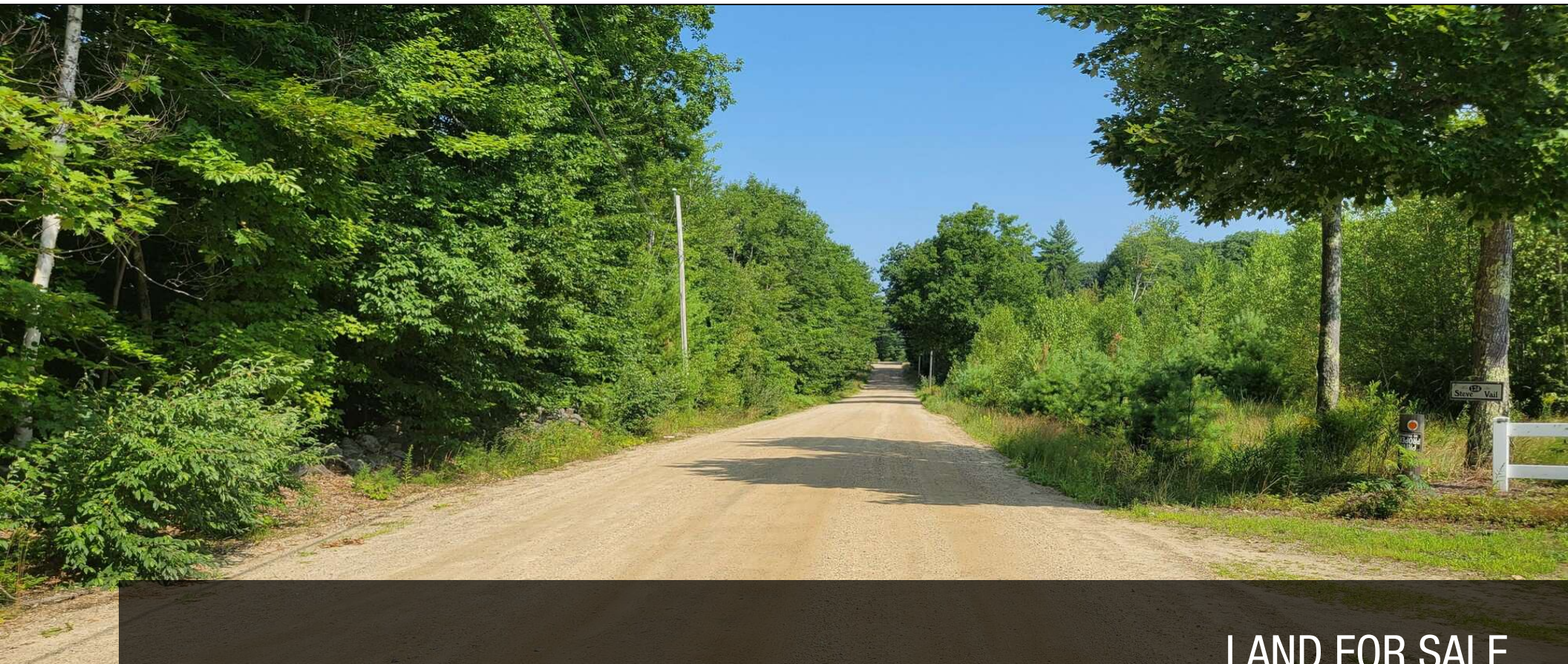




00 Hanna Nutter Rd., Barnstead NH

BARNSTEAD, NH



LAND FOR SALE

PRESENTED BY:

KELLER WILLIAMS COASTAL REALTY
603.610.8500
750 Lafayette Rd.
Suite 201 - Coastal Land & Commercial Group
Portsmouth, NH 03801



MARK BOUZIANIS
Commercial Realtor
O: 603.610.8500
C: 603.498.5563
mark@kwclcg.com
NH #081074



DAVE GARVEY
Managing Director
O: 603.610.8523
C: 603.491.2854
davegarvey@kwcommercial.com
NH #004637



WHITNEY TAYLOR
Commercial Realtor
O: 978.228.1055
C: 978.228.1055
whitney@kwclcg.com
NH #080690

LAND FOR SALE

00 HANNA NUTTER RD., BARNSTEAD NH

0 Hannah Nutter Road, Barnstead, NH 03225



PROPERTY DESCRIPTION

Unique opportunity to own 33 acres of land in the lakes region of NH for a very reasonable price. This rolling parcel has 528 feet of frontage on town-maintained Vail Rd. This property could be divided into several large lots or kept as one large lot for your rural estate or getaway. The property has 1292 feet of frontage on John Brown Rd. and 1692 feet of frontage on Hannah Nutter Rd., both class VI roads. (Check with the town on development requirements). This parcel consists of 3 lots on tax map 11- Lot 65, 66, and 68. Lot 65 is a 1 acre lot that can be purchased separately. Buyer needs to do their own due diligence as to buildability of lot 65.

LOCATION DESCRIPTION

Enjoy this peaceful, rural setting with easy access to route 126 and route 28. 20 Minutes to Alton Bay- Lake Winnepesaukee, 40 minutes to Gunstock Ski Area, 30 Minutes to Dover, NH, and 50 Minutes to Manchester Boston Regional Airport.

We obtained the information above from sources we believe to be reliable. However, we have not verified its accuracy and make no guarantee, warranty or representation about it. It is submitted subject to the possibility of errors, omissions, change of price, rental or other conditions, prior sale, lease or financing, or withdrawal without notice. We include projections, opinions, assumptions or estimates for example only, and they may not represent current or future performance of the property. You and your tax and legal advisors should conduct your own investigation of the property and transaction.

MARK BOUZIANIS
Commercial Realtor
O: 603.610.8500
C: 603.498.5563
mark@kwclcg.com
NH #081074

DAVE GARVEY
Managing Director
O: 603.610.8523
C: 603.491.2854
davegarvey@kwcommercial.com
NH #004637

WHITNEY TAYLOR
Commercial Realtor
O: 978.228.1055
C: 978.228.1055
whitney@kwclcg.com
NH #080690

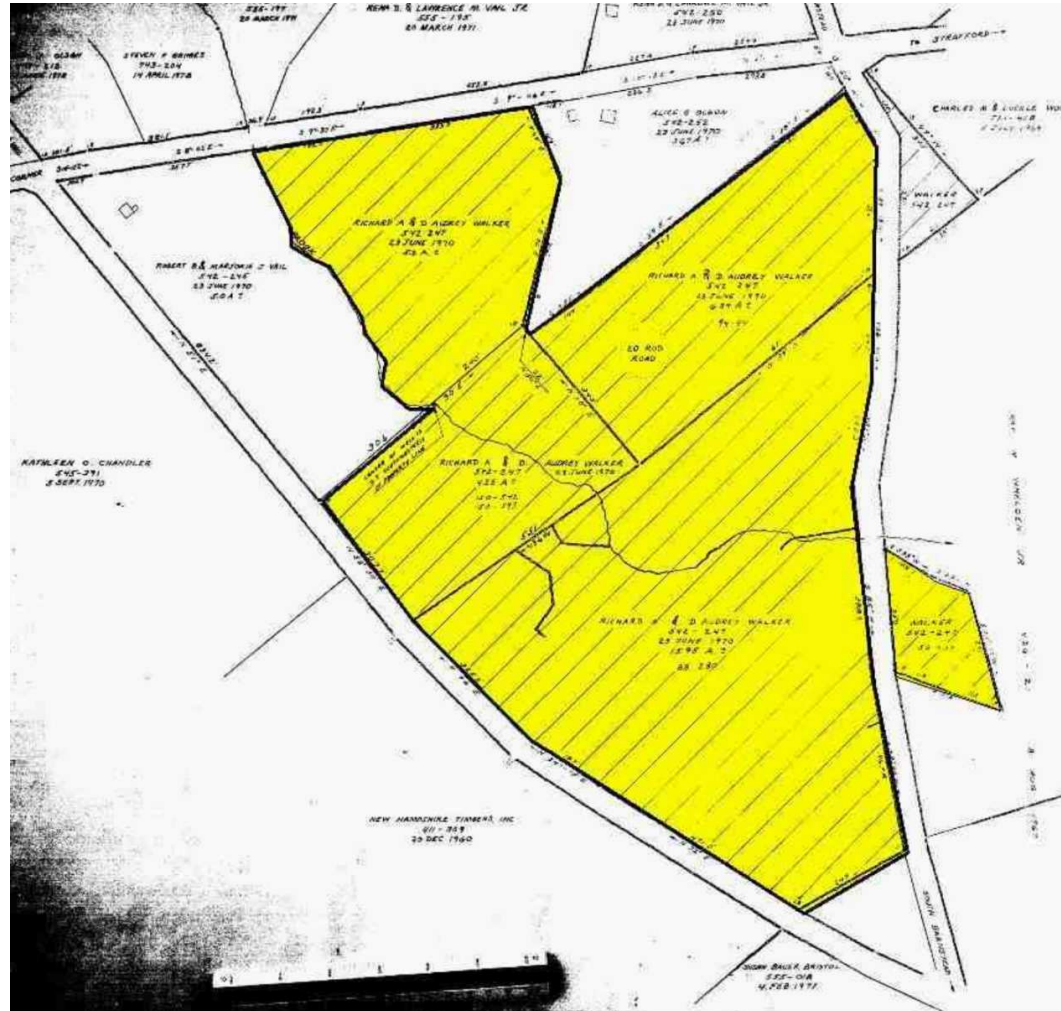
KELLER WILLIAMS COASTAL REALTY
603.610.8500
750 Lafayette Rd.
Suite 201 - Coastal Land & Commercial Group
Portsmouth, NH 03801

Each Office Independently Owned and Operated kwclcg.com

LAND FOR SALE

00 HANNA NUTTER RD., BARNSTEAD NH

0 Hannah Nutter Road, Barnstead, NH 03225



We obtained the information above from sources we believe to be reliable. However, we have not verified its accuracy and make no guarantee, warranty or representation about it. It is submitted subject to the possibility of errors, omissions, change of price, rental or other conditions, prior sale, lease or financing, or withdrawal without notice. We include projections, opinions, assumptions or estimates for example only, and they may not represent current or future performance of the property. You and your tax and legal advisors should conduct your own investigation of the property and transaction.

MARK BOUZIANIS
Commercial Realtor
O: 603.610.8500
C: 603.498.5563
mark@kwclcg.com
NH #081074

DAVE GARVEY
Managing Director
O: 603.610.8523
C: 603.491.2854
davegarvey@kwcommercial.com
NH #004637

WHITNEY TAYLOR
Commercial Realtor
O: 978.228.1055
C: 978.228.1055
whitney@kwclcg.com
NH #080690

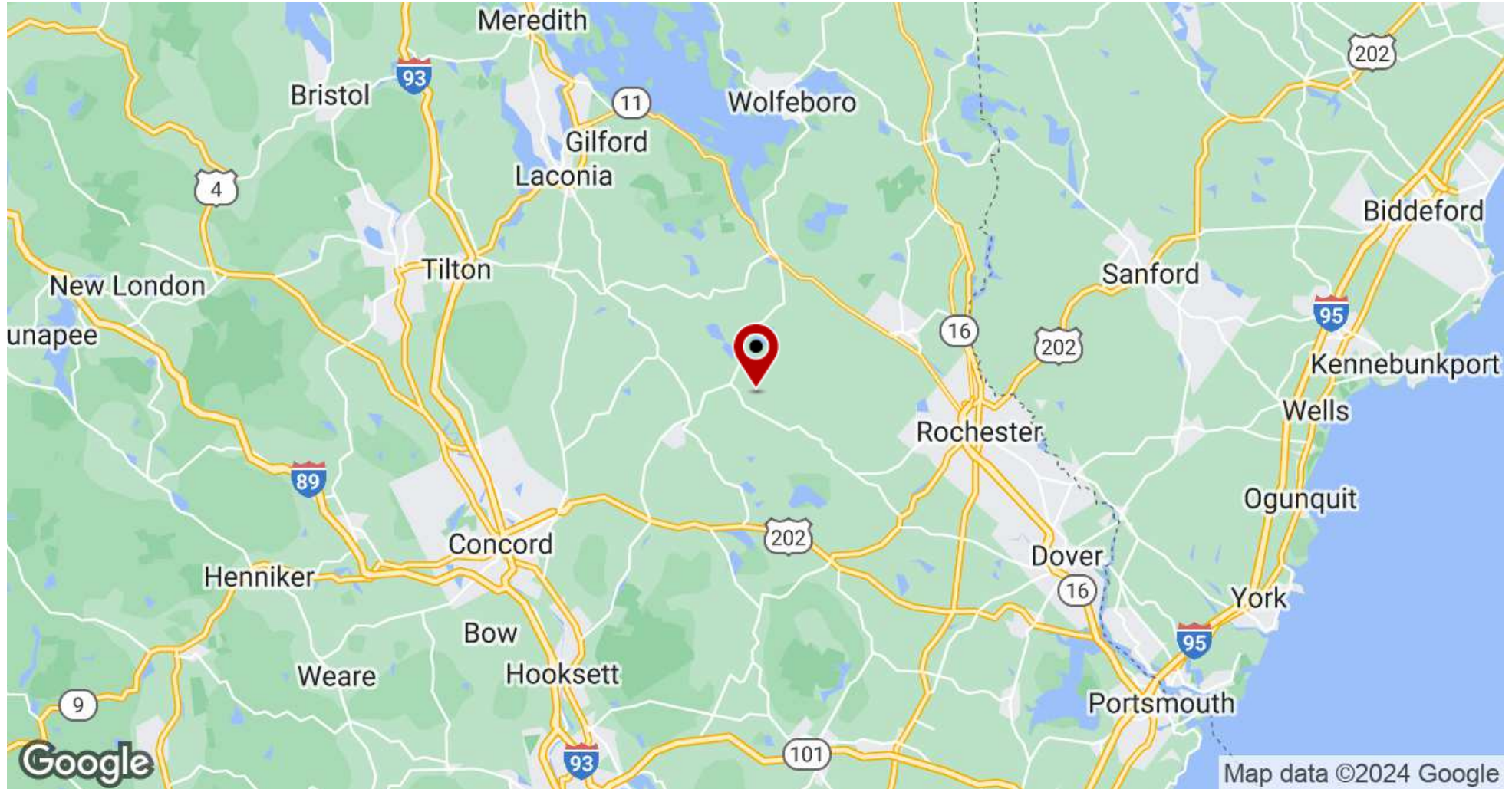
KELLER WILLIAMS COASTAL REALTY
603.610.8500
750 Lafayette Rd.
Suite 201 - Coastal Land & Commercial Group
Portsmouth, NH 03801

Each Office Independently Owned and Operated kwclcg.com

LAND FOR SALE

00 HANNA NUTTER RD., BARNSTEAD NH

0 Hannah Nutter Road, Barnstead, NH 03225



We obtained the information above from sources we believe to be reliable. However, we have not verified its accuracy and make no guarantee, warranty or representation about it. It is submitted subject to the possibility of errors, omissions, change of price, rental or other conditions, prior sale, lease or financing, or withdrawal without notice. We include projections, opinions, assumptions or estimates for example only, and they may not represent current or future performance of the property. You and your tax and legal advisors should conduct your own investigation of the property and transaction.

MARK BOUZIANIS
Commercial Realtor
O: 603.610.8500
C: 603.498.5563
mark@kwclcg.com
NH #081074

DAVE GARVEY
Managing Director
O: 603.610.8523
C: 603.491.2854
davegarvey@kwcommercial.com
NH #004637

WHITNEY TAYLOR
Commercial Realtor
O: 978.228.1055
C: 978.228.1055
whitney@kwclcg.com
NH #080690

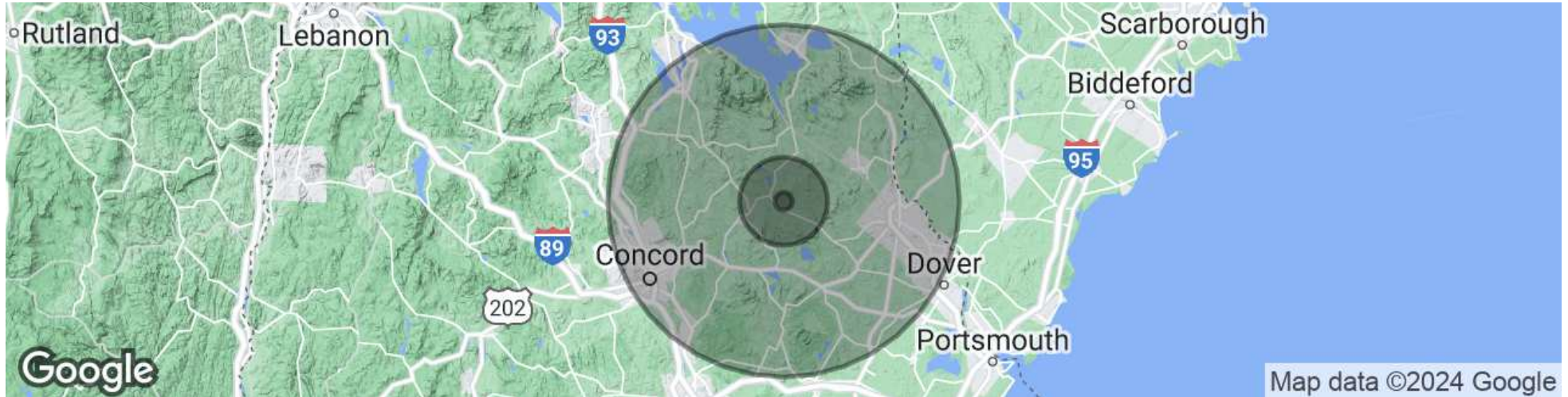
KELLER WILLIAMS COASTAL REALTY
603.610.8500
750 Lafayette Rd.
Suite 201 - Coastal Land & Commercial Group
Portsmouth, NH 03801

Each Office Independently Owned and Operated kwclcg.com

LAND FOR SALE

00 HANNA NUTTER RD., BARNSTEAD NH

0 Hannah Nutter Road, Barnstead, NH 03225



HOUSEHOLDS & INCOME

	1 MILE	5 MILES	20 MILES
Total Households	97	3,555	117,281
# of Persons per HH	2.6	2.5	2.5
Average HH Income	\$86,446	\$106,530	\$113,137
Average House Value	\$335,296	\$354,166	\$385,978

Demographics data derived from AlphaMap

We obtained the information above from sources we believe to be reliable. However, we have not verified its accuracy and make no guarantee, warranty or representation about it. It is submitted subject to the possibility of errors, omissions, change of price, rental or other conditions, prior sale, lease or financing, or withdrawal without notice. We include projections, opinions, assumptions or estimates for example only, and they may not represent current or future performance of the property. You and your tax and legal advisors should conduct your own investigation of the property and transaction.

MARK BOUZIANIS
Commercial Realtor
O: 603.610.8500
C: 603.498.5563
mark@kwclcg.com
NH #081074

DAVE GARVEY
Managing Director
O: 603.610.8523
C: 603.491.2854
davegarvey@kwcommercial.com
NH #004637

WHITNEY TAYLOR
Commercial Realtor
O: 978.228.1055
C: 978.228.1055
whitney@kwclcg.com
NH #080690

KELLER WILLIAMS COASTAL REALTY
603.610.8500
750 Lafayette Rd.
Suite 201 - Coastal Land & Commercial Group
Portsmouth, NH 03801

Each Office Independently Owned and Operated kwclcg.com

LAND FOR SALE

00 HANNA NUTTER RD., BARNSTEAD NH

0 Hannah Nutter Road, Barnstead, NH 03225



We obtained the information above from sources we believe to be reliable. However, we have not verified its accuracy and make no guarantee, warranty or representation about it. It is submitted subject to the possibility of errors, omissions, change of price, rental or other conditions, prior sale, lease or financing, or withdrawal without notice. We include projections, opinions, assumptions or estimates for example only, and they may not represent current or future performance of the property. You and your tax and legal advisors should conduct your own investigation of the property and transaction.

MARK BOUZIANIS
Commercial Realtor
O: 603.610.8500
C: 603.498.5563
mark@kwclcg.com
NH #081074

DAVE GARVEY
Managing Director
O: 603.610.8523
C: 603.491.2854
davegarvey@kwcommercial.com
NH #004637

WHITNEY TAYLOR
Commercial Realtor
O: 978.228.1055
C: 978.228.1055
whitney@kwclcg.com
NH #080690

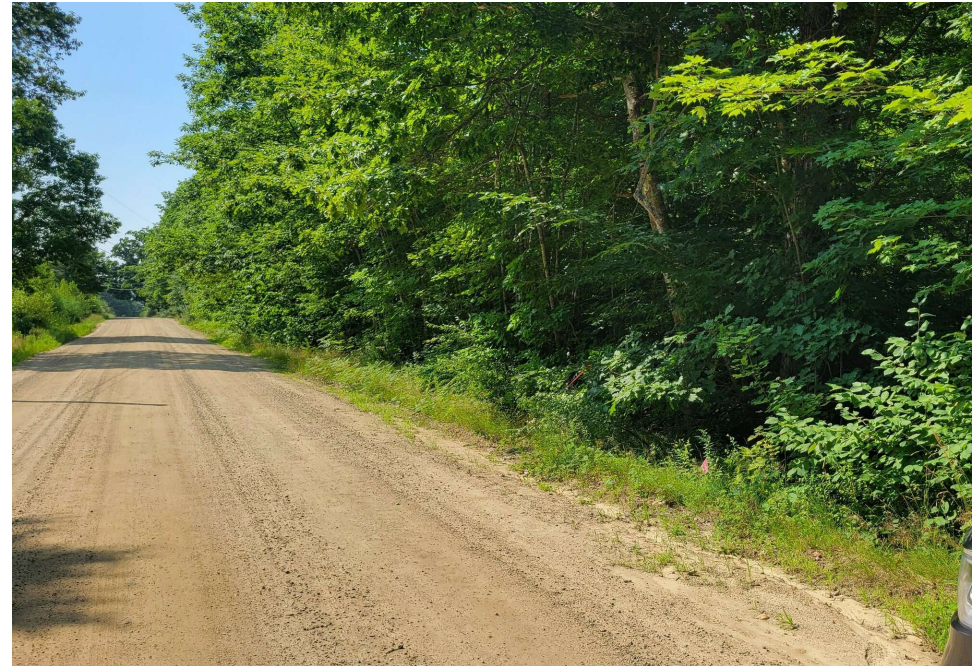
KELLER WILLIAMS COASTAL REALTY
603.610.8500
750 Lafayette Rd.
Suite 201 - Coastal Land & Commercial Group
Portsmouth, NH 03801

Each Office Independently Owned and Operated kwclcg.com

LAND FOR SALE

00 HANNA NUTTER RD., BARNSTEAD NH

0 Hannah Nutter Road, Barnstead, NH 03225



We obtained the information above from sources we believe to be reliable. However, we have not verified its accuracy and make no guarantee, warranty or representation about it. It is submitted subject to the possibility of errors, omissions, change of price, rental or other conditions, prior sale, lease or financing, or withdrawal without notice. We include projections, opinions, assumptions or estimates for example only, and they may not represent current or future performance of the property. You and your tax and legal advisors should conduct your own investigation of the property and transaction.

MARK BOUZIANIS
Commercial Realtor
O: 603.610.8500
C: 603.498.5563
mark@kwclcg.com
NH #081074

DAVE GARVEY
Managing Director
O: 603.610.8523
C: 603.491.2854
davegarvey@kwcommercial.com
NH #004637

WHITNEY TAYLOR
Commercial Realtor
O: 978.228.1055
C: 978.228.1055
whitney@kwclcg.com
NH #080690

KELLER WILLIAMS COASTAL REALTY
603.610.8500
750 Lafayette Rd.
Suite 201 - Coastal Land & Commercial Group
Portsmouth, NH 03801

Each Office Independently Owned and Operated kwclcg.com