



**201,571 SF** AVAILABLE FOR SALE OR LEASE

32' CLEAR HEIGHT | SECURED, PRIVATE YARD | UP TO 4,000-AMP CAPACITY

**9615 NORWALK BOULEVARD**

Santa Fe Springs, CA | Mid-Counties



## FEATURES

- 35 DH & 2 GL positions — 3 installed pit levelers
- 32' clear height
- ESFR K-25 sprinklers
- Up to 4,000-amp capacity, 277/480V
- 249 passenger parking stalls
- Secured, private yard
- 172' truck court
- 9 trailer parking stalls



## ESG FEATURES

- HVLS fans & air exchange system reduce effective temperature (up to 11°) & improve air quality
- 60% energy & 75% water savings from efficient building systems & landscaping
- 25 EV charging stalls, expandable to 100 total stalls
- 202 kW solar system

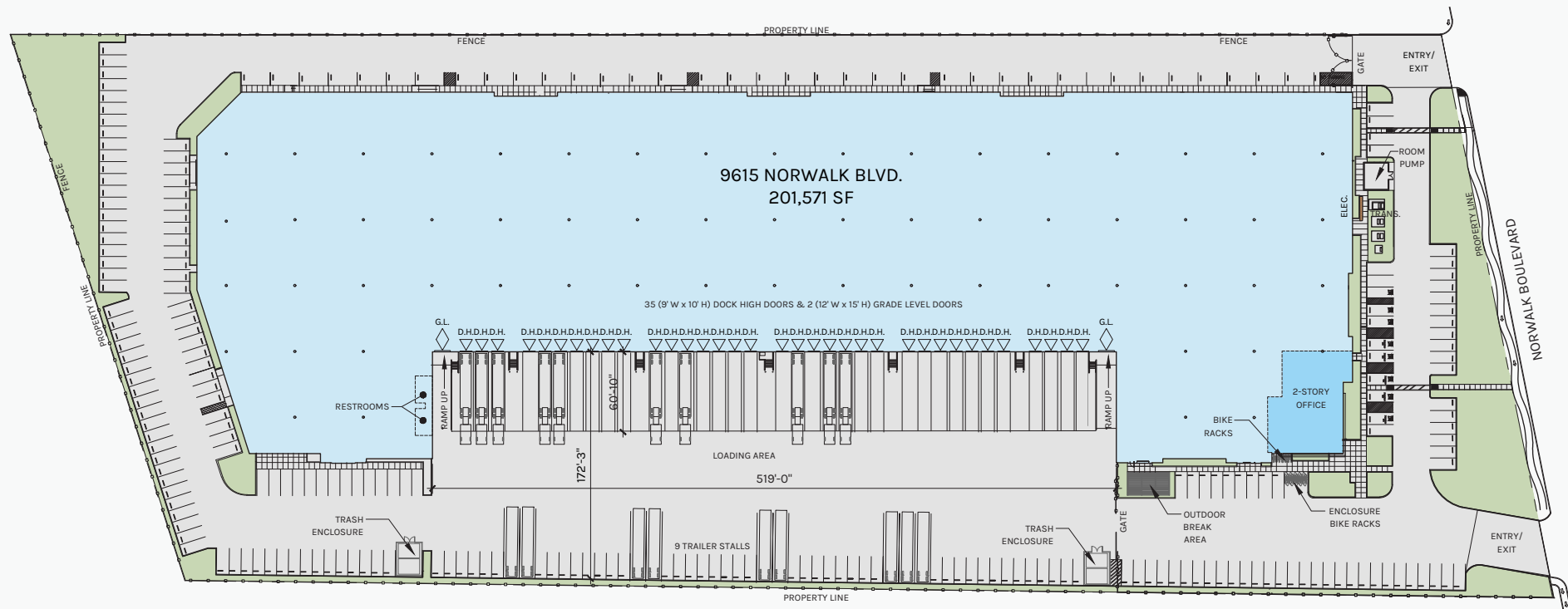


# SITE PLAN

**193,804 SF**  
WAREHOUSE

**7,767 SF**  
OFFICE

Plan layout is subject to field conditions and may differ from the plan as shown. All information presented in this drawing is presumed to be accurate; however, tenant should verify pertinent information prior to committing to a lease. Any furniture or appliances shown on the plan are for concept only and will be provided by tenant.

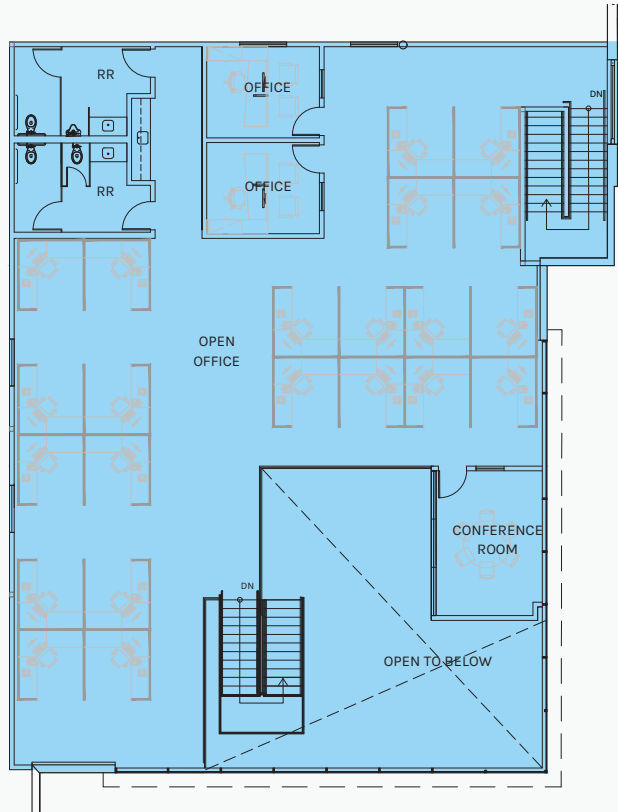
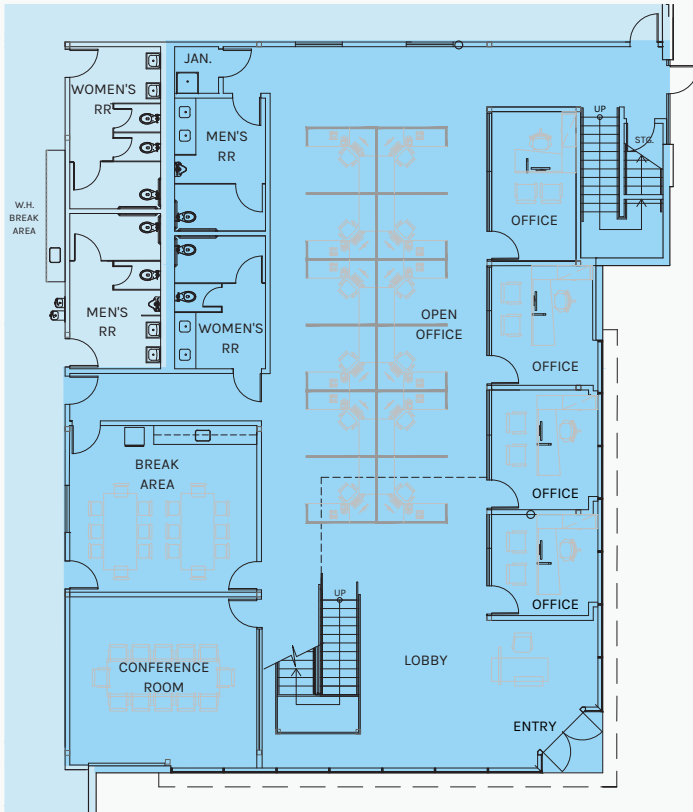


# OFFICE FLOOR PLAN

**4,220 SF**  
FIRST FLOOR

**3,547 SF**  
MEZZANINE

Plan layout is subject to field conditions and may differ from the plan as shown. All information presented in this drawing is presumed to be accurate; however, tenant should verify pertinent information prior to committing to a lease. Any furniture or appliances shown on the plan are for concept only and will be provided by tenant.



FIRST FLOOR

MEZZANINE







**Rexford  
Industrial**

## Broker Contacts

### **MIKE FOLEY**

Executive Vice President  
310.321.1813  
mike.foley@colliers.com  
CA License #00771079

### **CHRIS SHEEHAN, SIOR**

Senior Executive Vice President  
310.321.1831  
chris.sheehan@colliers.com  
CA License #01202469



### **COLLIERS**

2141 Rosecrans Avenue, Suite 1120  
El Segundo, CA 90245  
310.787.1000  
colliers.com

Disclaimer @2026 Rexford Industrial. All rights reserved. Rexford Industrial provides information in this communication on an 'as is' basis and makes no warranties, expressed or implied, and hereby disclaims and negates all other warranties. Rexford Industrial does not warrant or make any representations concerning the accuracy, completeness or reliability of the information in this communication, which could include technical, typographical or photographic errors. The property information referenced in this communication may or may not be changed or updated at any time, including, but not limited to, change of price, rental or other conditions, withdrawal without notice and to any listing conditions imposed by Rexford Industrial.