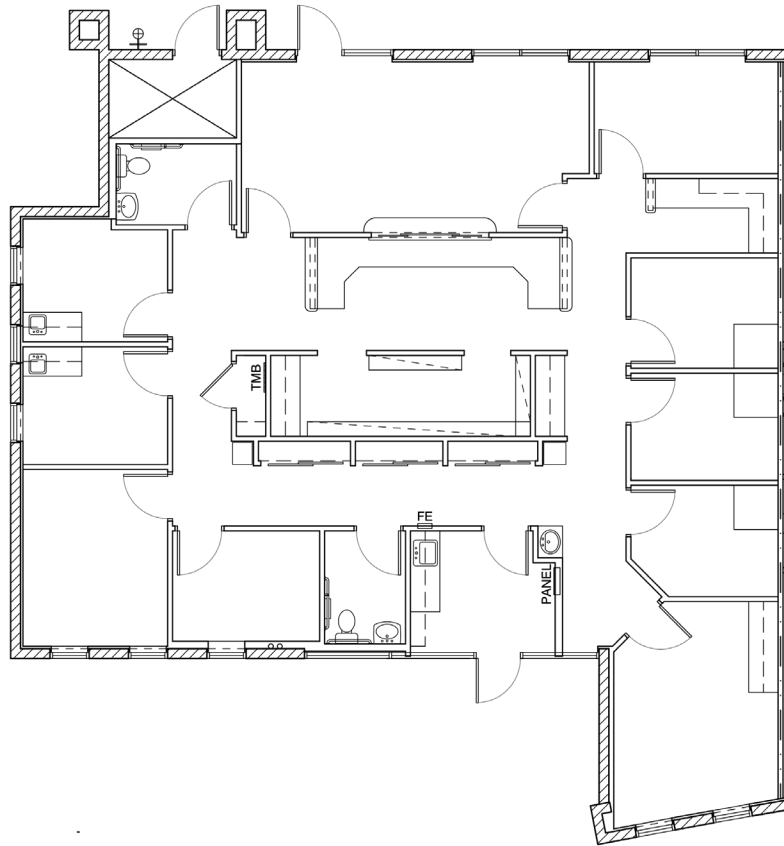


**FOR LEASE**

# Greenfield Medical/Dental Center

875 N GREENFIELD RD PHASE II | GILBERT, AZ

## Suite 101



**±2,299** SQUARE FEET

**AVAILABLE 11/01/2025**

**PERRY GABUZZI, CCIM**  
Senior Vice President  
602.513.5116  
[perry.gabuzzi@kidder.com](mailto:perry.gabuzzi@kidder.com)

**RACHAEL THOMPSON**  
Senior Vice President  
602.513.5122  
[rachael.thompson@kidder.com](mailto:rachael.thompson@kidder.com)

**KIDDER.COM**

This information supplied herein is from sources we deem reliable. It is provided without any representation, warranty, or guarantee, expressed or implied as to its accuracy. Prospective Buyer or Tenant should conduct an independent investigation and verification of all matters deemed to be material, including, but not limited to, statements of income and expenses. Consult your attorney, accountant, or other professional advisor.

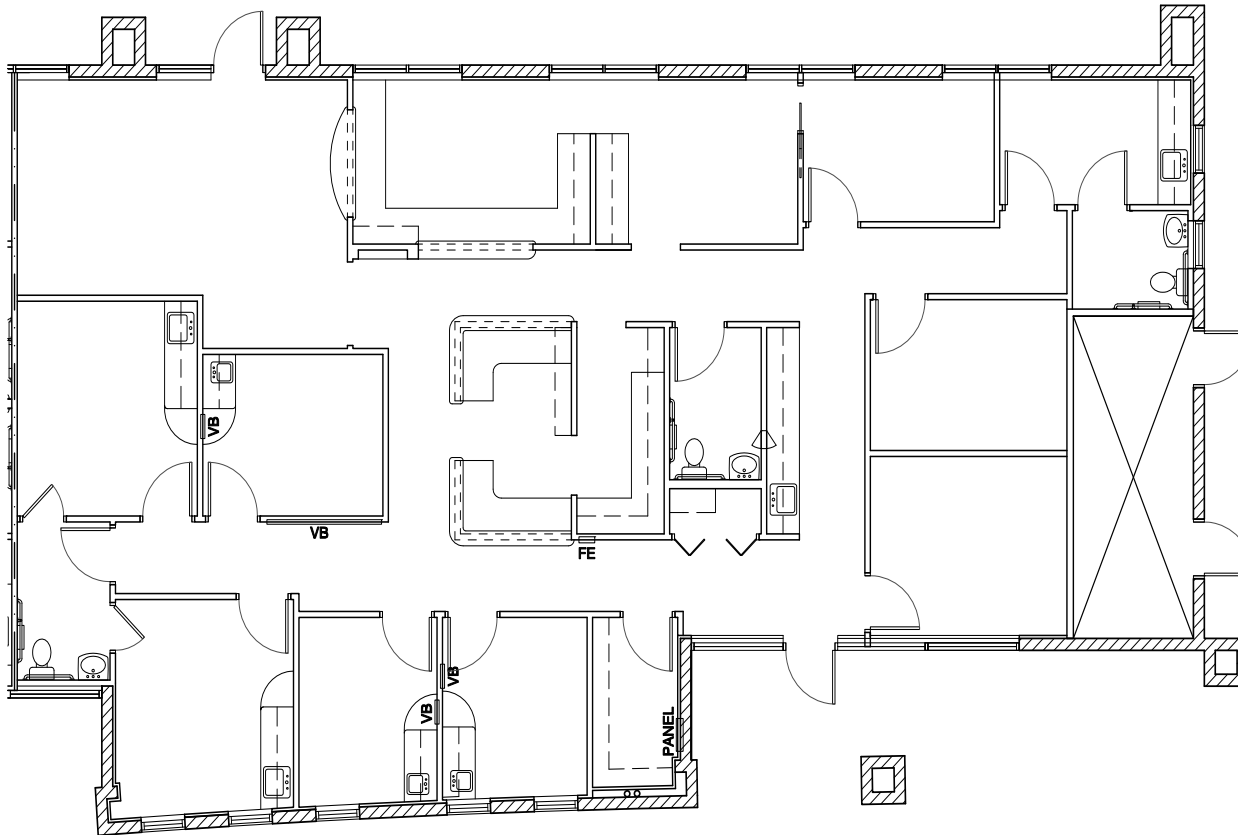


FOR LEASE

# Greenfield Medical/Dental Center

875 N GREENFIELD RD PHASE II | GILBERT, AZ

## Suite 105



±2,698

SQUARE FEET

AVAILABLE 10/01/2023

**PERRY GABUZZI, CCIM**  
Senior Vice President  
602.513.5116  
[perry.gabuzzi@kidder.com](mailto:perry.gabuzzi@kidder.com)

**RACHAEL THOMPSON**  
Senior Vice President  
602.513.5122  
[rachael.thompson@kidder.com](mailto:rachael.thompson@kidder.com)

KIDDER.COM

This information supplied herein is from sources we deem reliable. It is provided without any representation, warranty, or guarantee, expressed or implied as to its accuracy. Prospective Buyer or Tenant should conduct an independent investigation and verification of all matters deemed to be material, including, but not limited to, statements of income and expenses. Consult your attorney, accountant, or other professional advisor.

