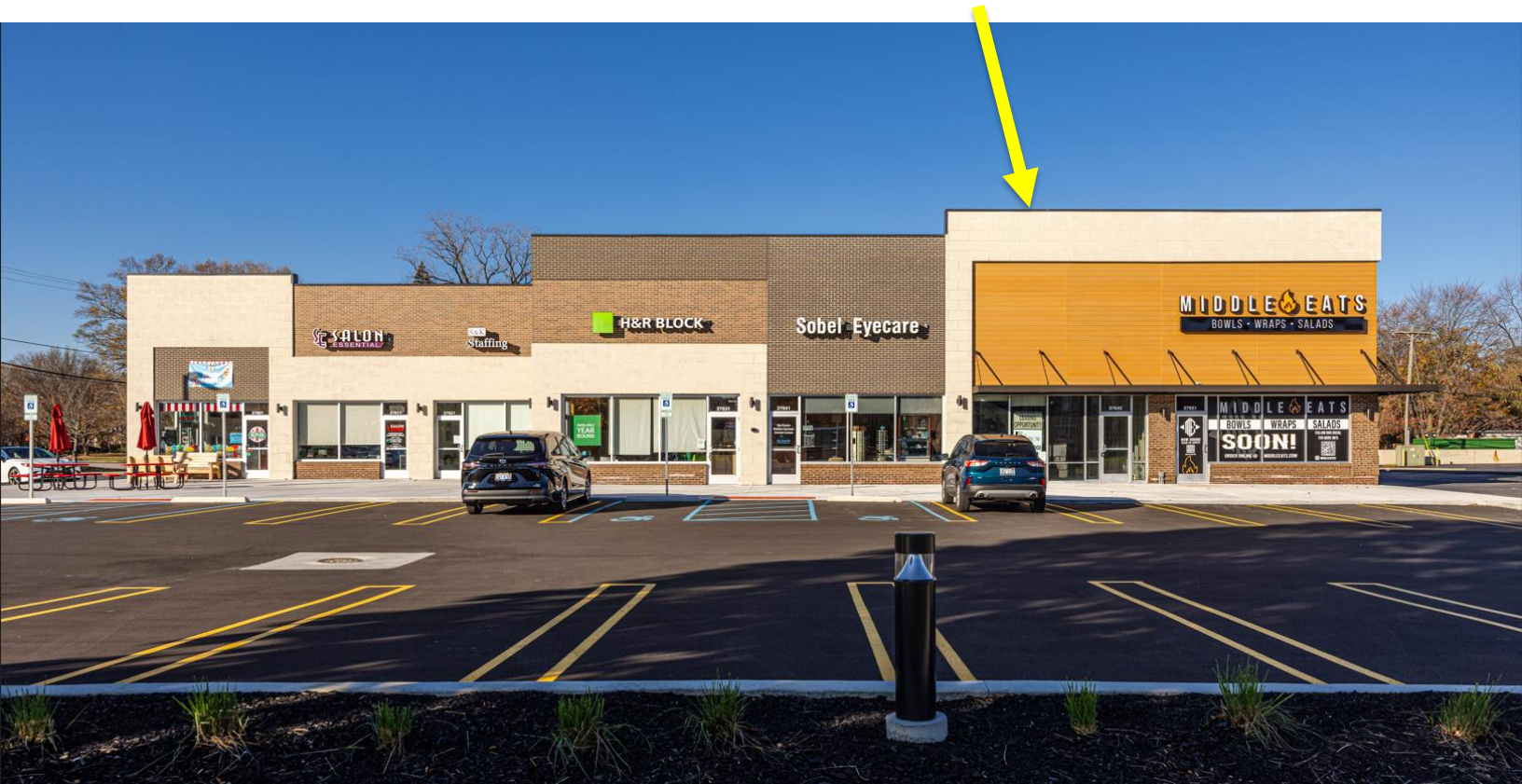


LATHRUP VILLAGE CENTER

LEASING INFORMATION PACKAGE

27645 Southfield Road
Lathrup Village, MI 48076

1,800 Sq. Ft. Leasing Opportunity – ONLY ONE SPACE REMAINING!



- COMPLETELY REDESIGNED EXTERIOR
- WHITE BOXED INTERIOR
- TENANT MIX DRAWS FROM ENTIRE REGION
- 4 BLOCKS FROM I-696 INTERCHANGE
- #1 NORTH-SOUTH TRAFFIC OF ANY ROAD BETWEEN TELEGRAPH AND WOODWARD



FOR LEASING INQUIRIES, CONTACT ROB KROCHMAL:
248.867.3304 • ROBK@SURNOW.COM

TABLE OF CONTENTS

Aerial	3
Site Plan - Lathrup Village Center	4
Site Plan - Space Opportunity	5
Pictures	6-8
Floor Plan - 27645 Southfield Rd	9
Site Highlights	10
Lathrup Village Center Panera - Now Open	11
About The Surnow Company	12

AERIAL



*Placer.ai 2022



FOR LEASING INQUIRIES, CONTACT ROB KROCHMAL:
248.867.3304 · ROBK@SURNOW.COM

SITE PLAN – LATHRUP VILLAGE CENTER

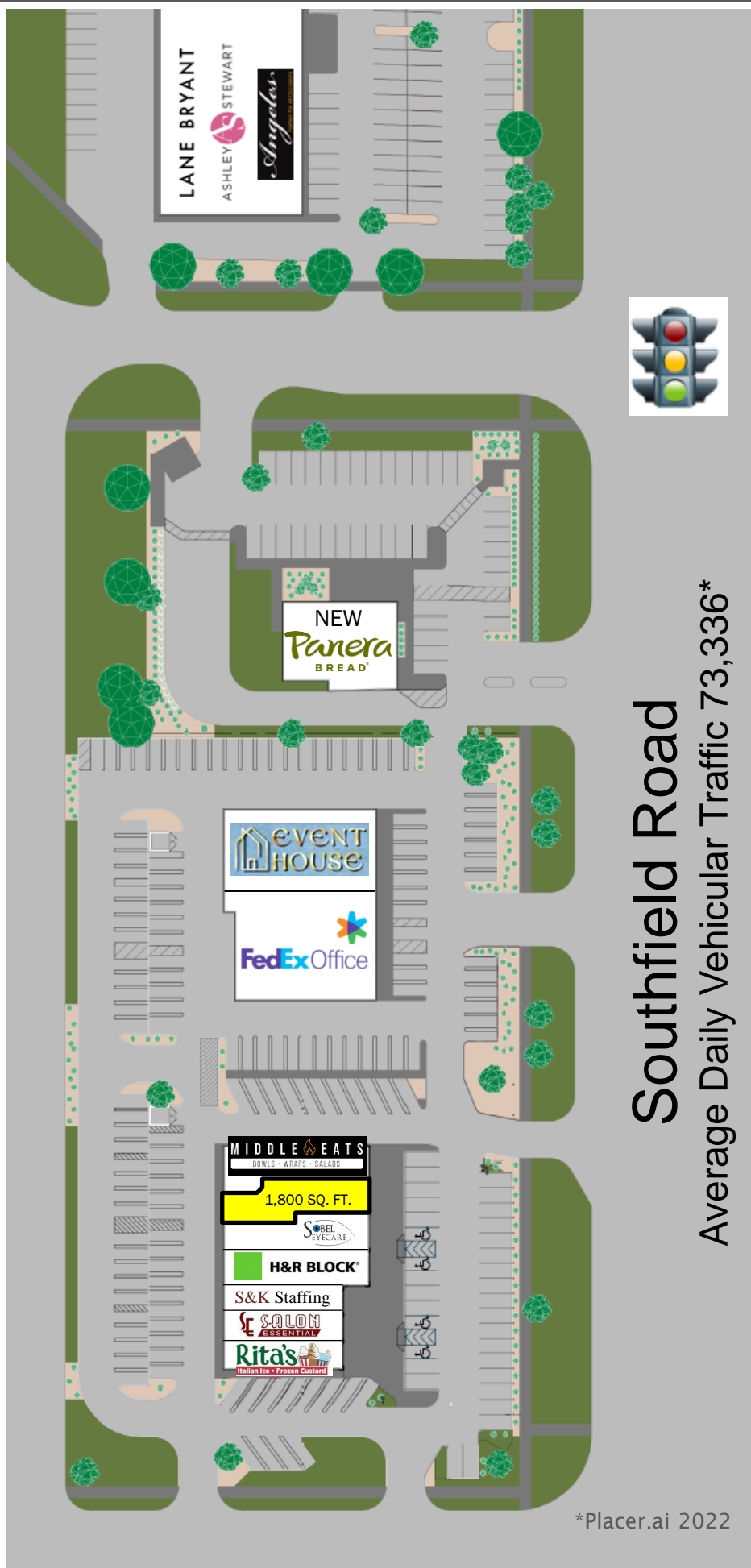
Cross parking to
signalized driveway

Newest Prototype
Panera with Drive-Thru
Opened 2024

Tenant lineup is a regional
draw:

- Ashley Stewart
- Lane Bryant
- FedEx Office
- H&R Block
- Panera
- Rita's Italian Ice
- Middle Eats
- and more

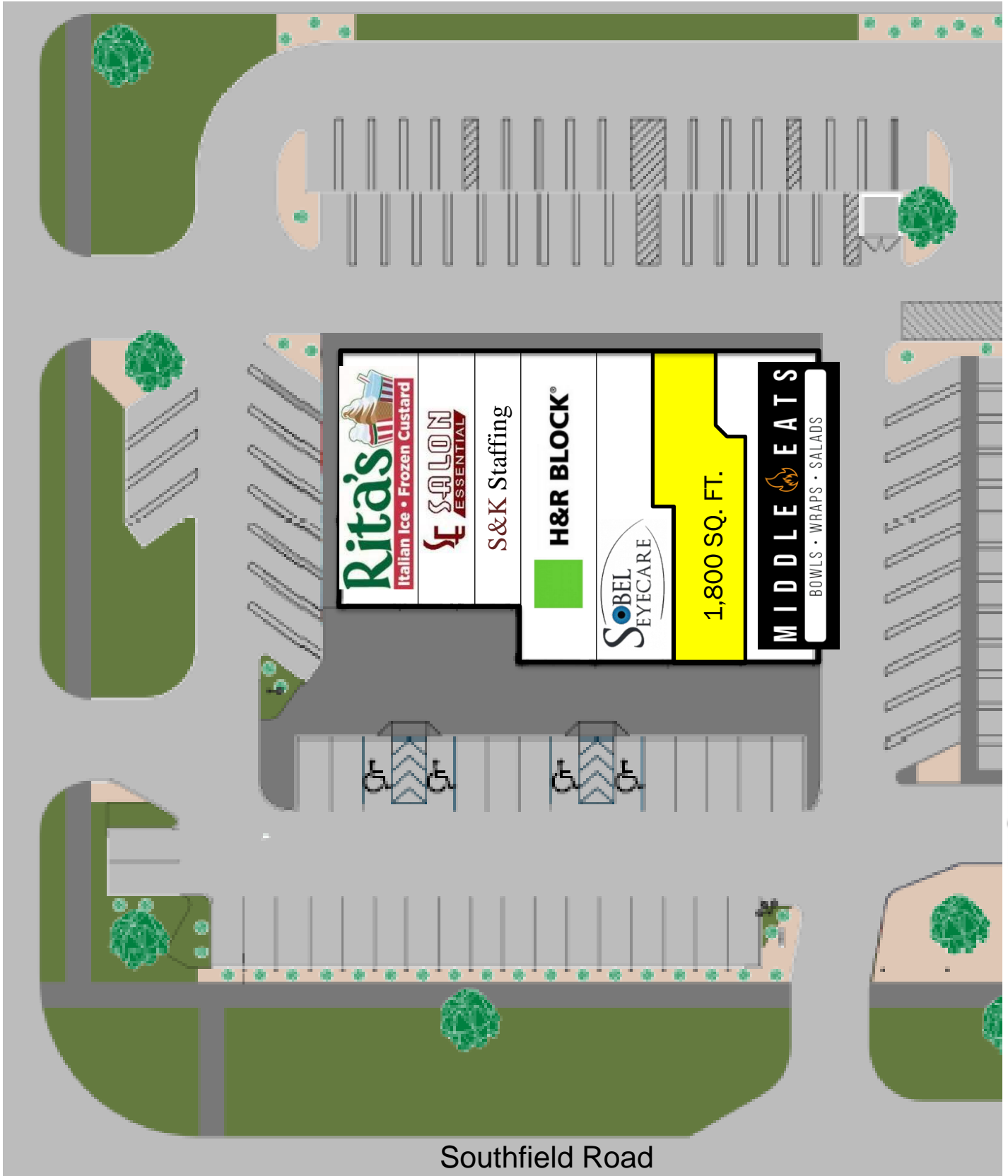
Last remaining
available suite is in
completely redesigned
building



Southfield Road
Average Daily Vehicular Traffic 73,336*

*Placer.ai 2022

SITE PLAN – SPACE OPPORTUNITY



Southfield Road



FOR LEASING INQUIRIES, CONTACT ROB KROCHMAL:
248.867.3304 • ROBK@SURNOW.COM

PICTURES



FOR LEASING INQUIRIES, CONTACT ROB KROCHMAL:
248.867.3304 · ROBK@SURNOW.COM

PICTURES



FOR LEASING INQUIRIES, CONTACT ROB KROCHMAL:
248.867.3304 · ROBK@SURNOW.COM

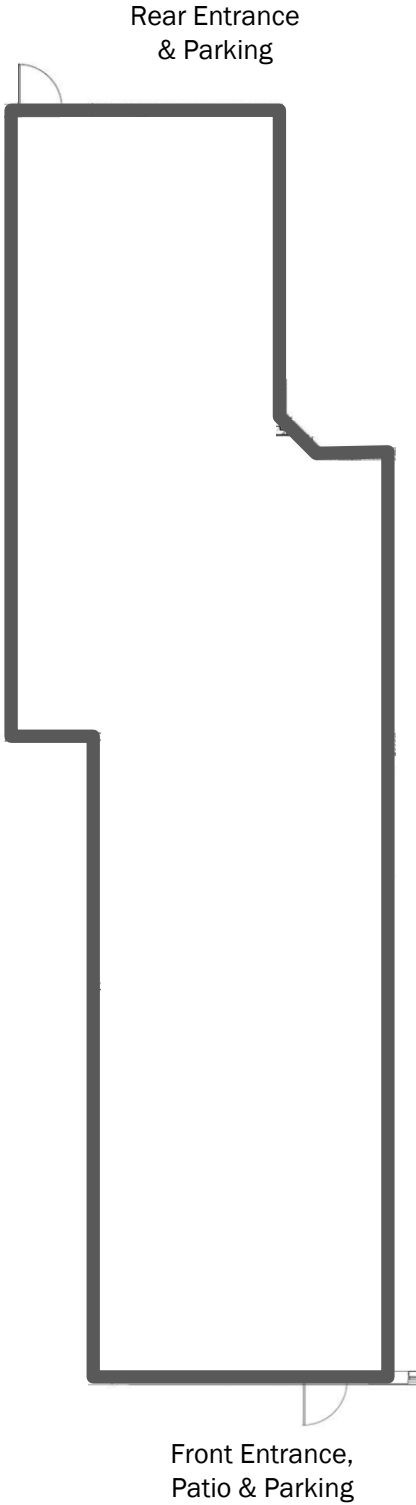
PICTURES



THE
SURNOW
COMPANY

FOR LEASING INQUIRIES, CONTACT ROB KROCHMAL:
248.867.3304 · ROBK@SURNOW.COM

FLOOR PLAN – 27645 Southfield Rd



1,800 SQ. FT.



FOR LEASING INQUIRIES, CONTACT ROB KROCHMAL:
248.867.3304 · ROBK@SURNOW.COM

SITE HIGHLIGHTS

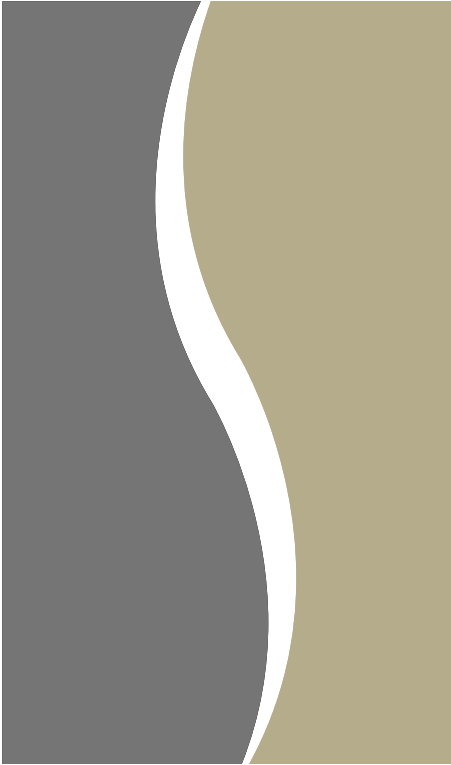
- Completely remodeled façade and parking lot of Lathrup Village Center's southern building offering large façade signage opportunity, enlarged outdoor sidewalk patio space, and city sidewalk accent lighting making the site inviting year-round.
- Outstanding cross-shopping generated by national co-occupants including the newest Panera prototype café (opened 2024 replacing their 1997 café), FedEx Office, H&R Block, Ashley Stewart, Lane Bryant, Rita's Italian Ice & Custard, Middle Eats, and the region's best operators. Lathrup Village Center attracts customers from early morning through evening hours.
- Excellent exposure to northbound and southbound traffic on Southfield Road – 73,336 vehicles per day*.
- Convenient access with multiple site access points, cross-connected parking lots at a traffic signalized intersection.
- Easily accessible by surrounding communities via Southfield Freeway and I-696.
- Located kitty-corner to Lathrup Village's City Hall, drawing crowds for community events and functions.



PANERA LATHRUP VILLAGE CENTER - NOW OPEN



FOR LEASING INQUIRIES, CONTACT ROB KROCHMAL:
248.867.3304 · ROBK@SURNOW.COM



ABOUT US, THE OWNER AND MANAGER

The Surnow Company is a family-owned developer,
owner and property manager headquartered in
Birmingham, Michigan.

Known for attention to detail and white-glove approach,
we provide quality space and services for our customers
and communities to thrive.