



(904) 373-8778  
Property Theater, LLC

# BUTLER 95

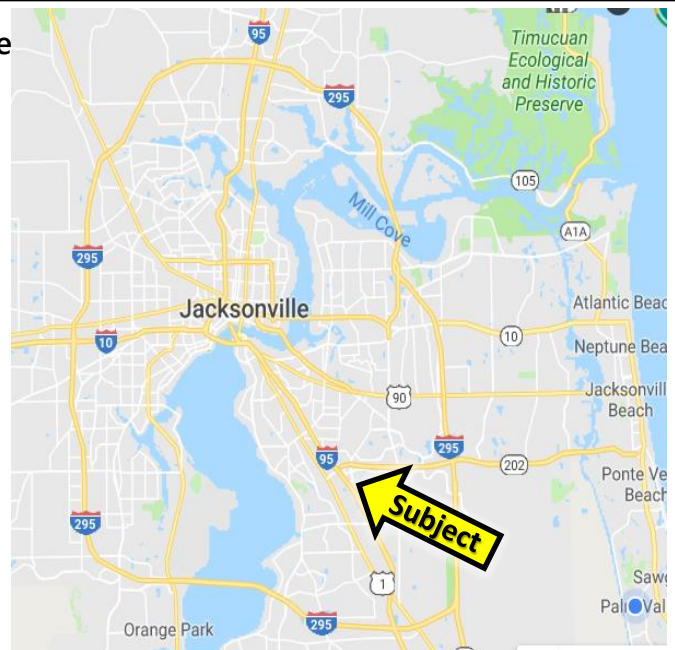
PHASE II - FLEX WAREHOUSE CONDOS FOR SALE

STARTING AT  
\$252,000



PROPERTY DETAILS – [8200 CYPRESS PLAZA DRIVE, JACKSONVILLE, FL 32256](#)

- 2,400-28,800 contiguous square feet available starting from \$252,000
- Second Phase of extremely successful development... SOLD OUT
- Centrally located: Downtown, Beaches, St. Johns County within 20 minutes
- Front entry/ rear grade level roll-up (12'X14')
- Community truck well
- PUD zoning with multiple commercial uses
- Delivery Fall 2020



RESERVE YOUR UNITS AT [WWW.MYPLACEJAX.COM](http://WWW.MYPLACEJAX.COM)

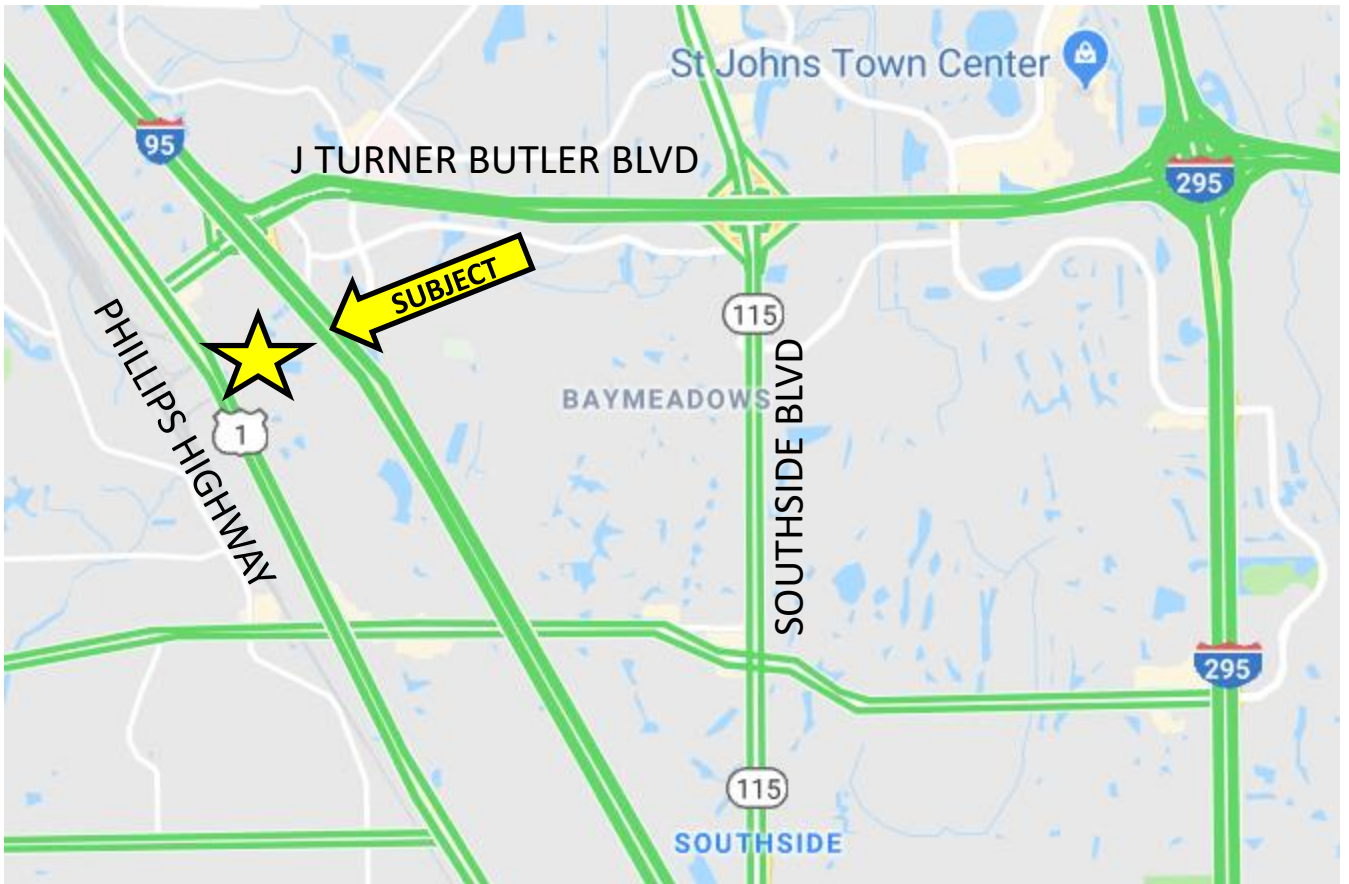
Property Theater, LLC  
11323 Distribution Avenue East  
Jacksonville, FL 32256

Justin Clark  
Cell: (904) 537-7921  
[justin@propertytheater.com](mailto:justin@propertytheater.com)

Sina Venus  
Cell: (904) 704-0296  
[sina@propertytheater.com](mailto:sina@propertytheater.com)

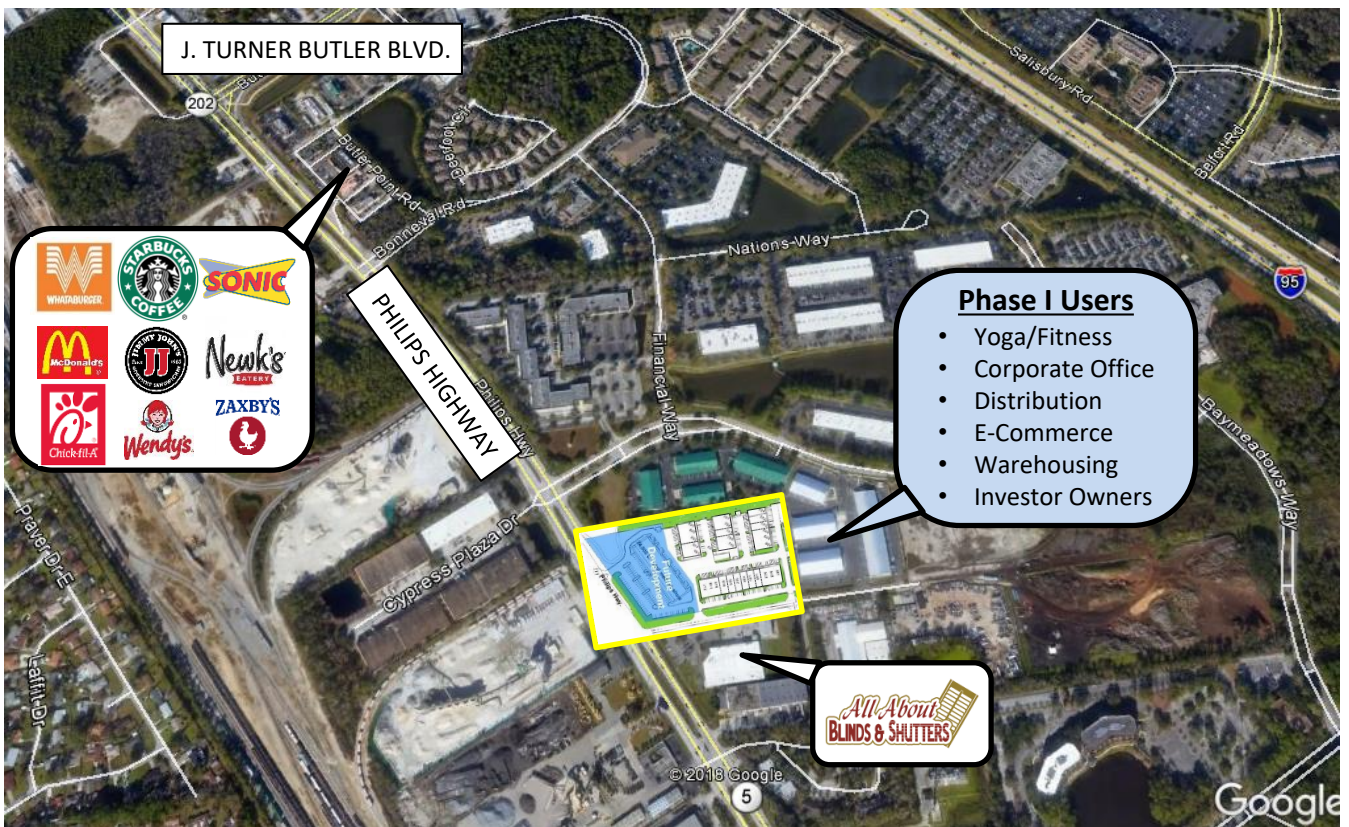
Although all information furnished regarding for sale, rental or financing is from sources deemed reliable, such information has not been verified and no express representation is made nor is any to be implied as to the accuracy thereof and is submitted subject to errors, omissions, changes of price, rental or other conditions, prior to assignment, of contract, sale, lease or financing or withdrawal without notice.

# AERIAL & TRAFFIC



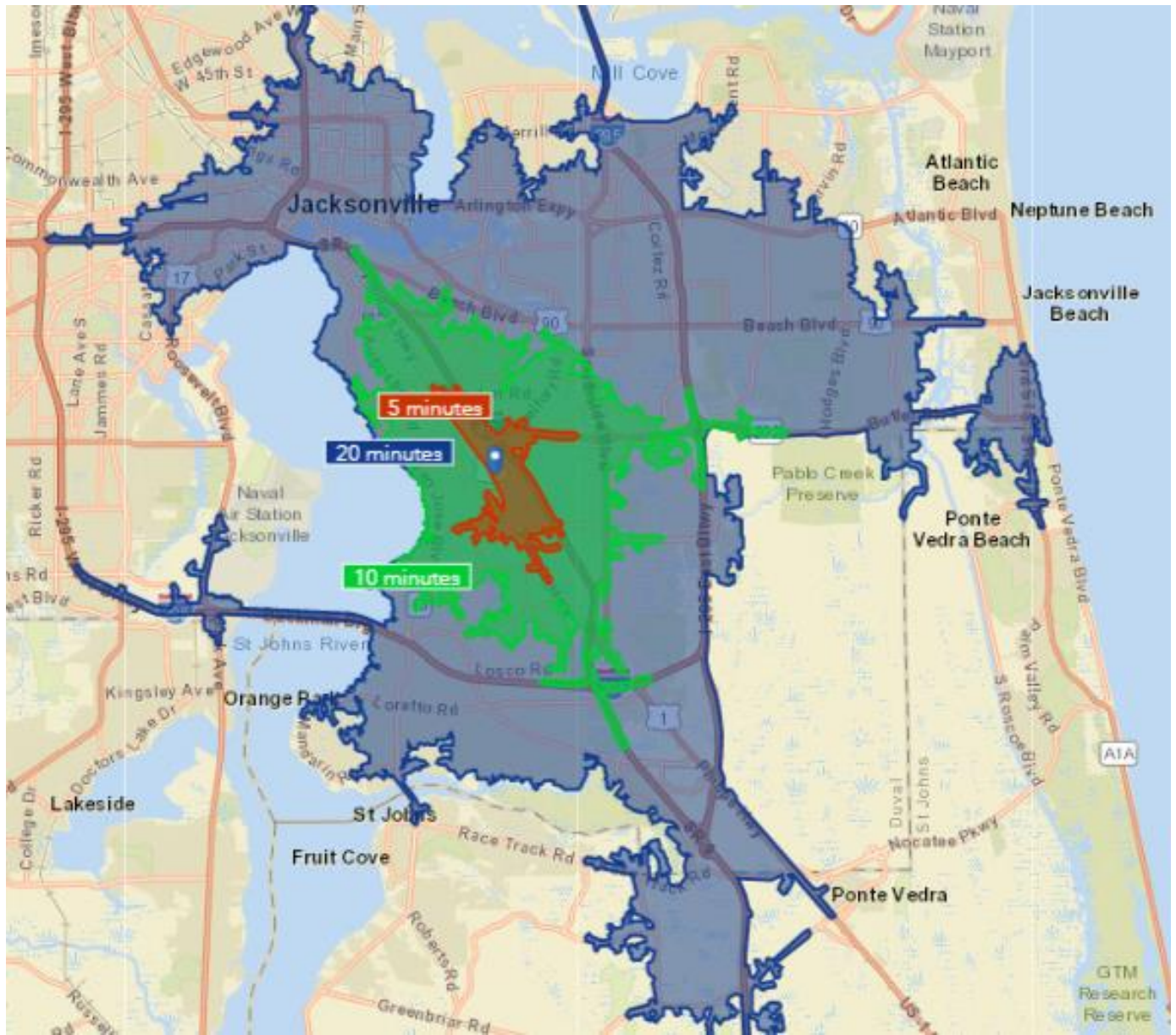


# ACCESS & SURROUNDINGS





# DRIVE TIMES



# PHASE I SITE IMAGES





# PHASE II SITE PLAN

