



FOR LEASE



PARKWAY PLAZA III

Office Space Available: 7,020 RSF (Divisible to ± 3,500 RSF)

4601 NE 77th Avenue, Vancouver, WA 98684

Centrally located and easily accessible to all of Clark County in the Westfield Shopping Town (Vancouver Mall) area, Parkway Plaza III has easy access to I-5 and I-205 via SR-500. Tenants enjoy several nearby amenities. Beautifully designed three-story office building featuring common area conference room, showers and convenient location. Portland International Airport is located within 15 minutes of the property.

TAMARA J. FULLER, CCIM

Senior Vice President | Licensed in WA

360-946-4832 | tamara.fuller@capacitycommercial.com

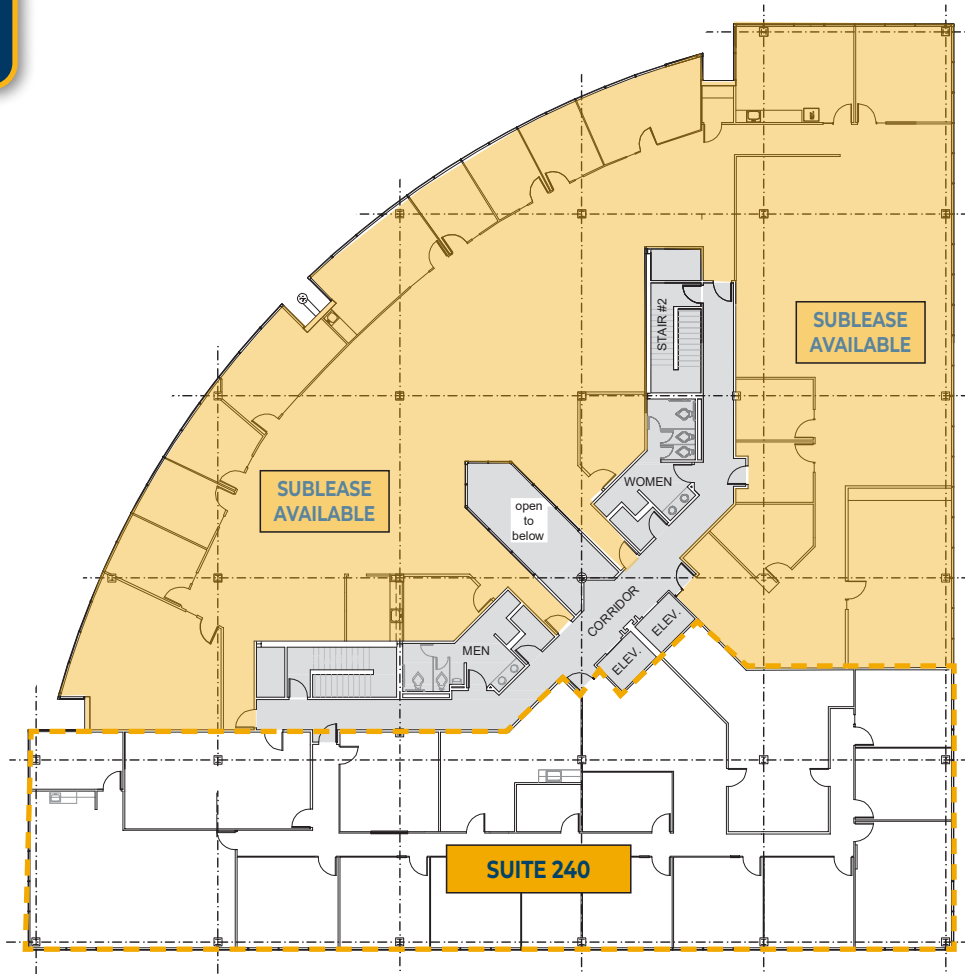
ERIC ANDERSON

Senior Vice President | Licensed in WA

360-946-4831 | eric@capacitycommercial.com



PROPERTY SUMMARY



PROPERTY DETAILS & AMENITIES

Total Building SF	54,247 SF
Suite 240	7,020 RSF Divisible to ± 3,500 RSF
Rate	\$25/RSF, Full Service
Parking	3.25/1,000 SF ratio (176 total spaces)
Building Class	A
Available	Fall 2024
Virtual Tour	Click to see Suite 240

***Adjacent space available for sublease and could be contiguous up to 18,217 RSF for a full floor Tenant.**

TAMARA J. FULLER, CCIM

Senior Vice President | Licensed in WA
360-946-4832 | tamara.fuller@capacitycommercial.com

ERIC ANDERSON

Senior Vice President | Licensed in WA
360-946-4831 | eric@capacitycommercial.com



PROPERTY PHOTOS

