

**UNDER NEW OWNERSHIP
AND MANAGEMENT**

**COMPLETE
REMODEL
BY STOP & SHOP
COMING SOON**



875 BLOOMFIELD AVE.
WEST CALDWELL, NEW JERSEY
ESSEX MALL

3,200 SF FOR LEASE

KYLE GOWOREK

kgoworek@jefferyrealty.com

C: 201.978.1770

O: 908.668.9600 EXT. 294

SHANE WIERKS

swierks@jefferyrealty.com

C: 908.581.7781

O: 908.668.9600 EXT. 223



JEFFERY REALTY
Retail Specialist

52 Millburn Ave. • Springfield, NJ 07081 • T: 908.668.9600 • F: 908.668.5225 • www.JefferyRealty.com
All information is from sources deemed reliable and is submitted subject to errors, omissions, change of price, terms, prior sales and withdrawals.





A01	AERA Vet ER	45,000 SF
A02	Twisterz	15,675 SF
A03	Marshalls	39,557 SF
S01	Miglaccio Pizza	4,000 SF
S02	Dr. Patel	2,500 SF
S03	Easy Peasy Kid Kutz	1,500 SF
S04	Beach Bum Tanning	3,200 SF
S05/S06	AVAILABLE	3,200 SF
S07/S08	Orange Theory	3,200 SF
S09	Asian Delite	2,800 SF
S10	Bromilow Chocolate	1,200 SF
S11	West Essex Jeweler	1,600 SF
S12	Carvel	1,200 SF
S13	Expedia Travel (IN LEASE)	1,200 SF
S14	AT&T	1,600 SF
S15	Nail Salon	1,600 SF
A04	Stop & Shop	57,645 SF
P01	PNC Bank	3,096 SF



875 BLOOMFIELD AVE. WEST CALDWELL, NJ

SITE INFORMATION

GLA: 189,773 SF
AVAILABLE: 3,200 SF
RENT: \$29.00 PSF
NNN: \$9.30 PSF
 TAX: \$6.02
 CAM: \$3.28

RENT: CALL FOR QUOTE
TRAFFIC: 21,114 VPD ON BLOOMFIELD
FRONTAGE: 1,197' ON BLOOMFIELD
PARKING: 977 SPACES

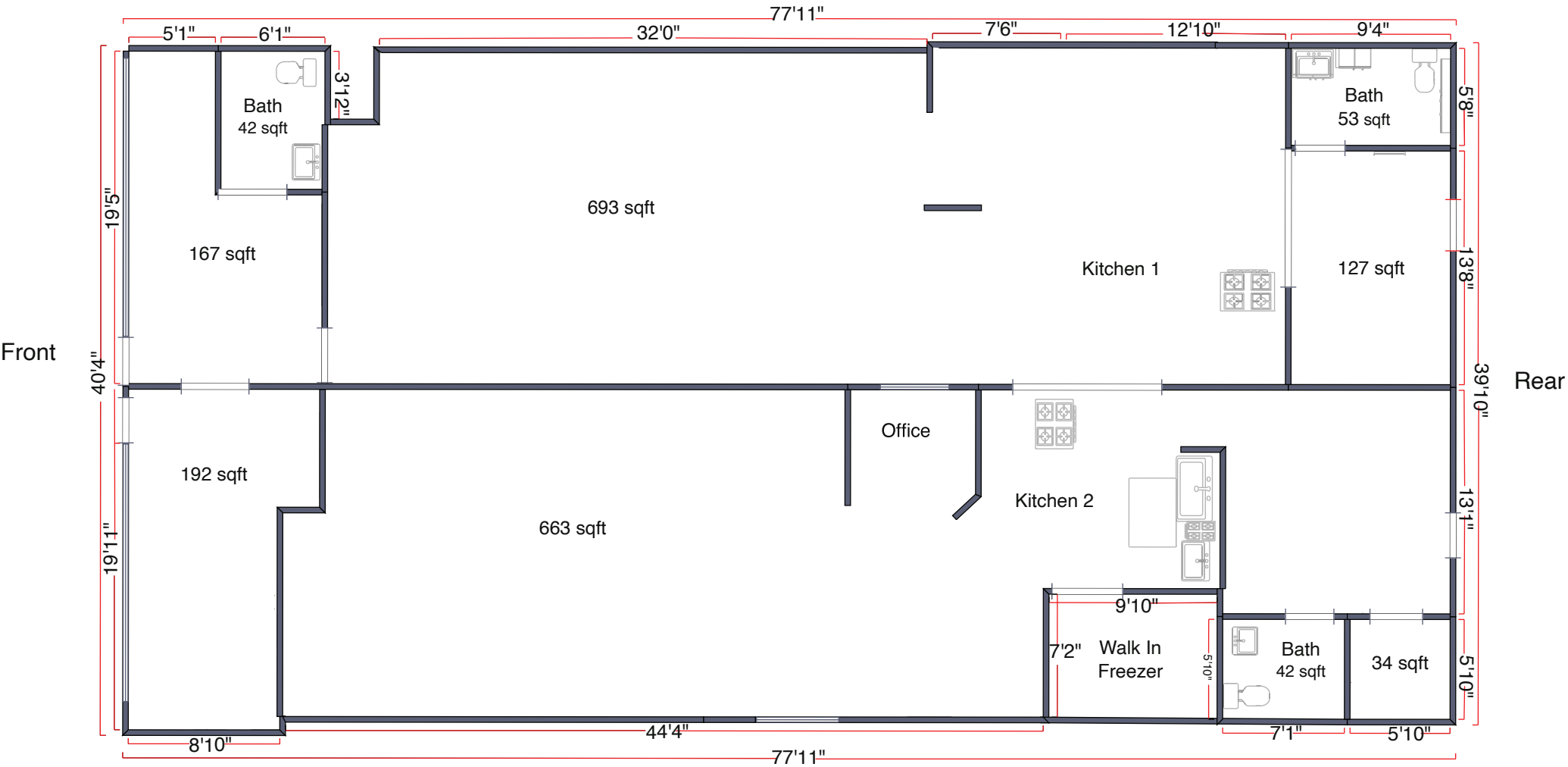
NOTES: 6 entrances, including signalized along Bloomfield Ave.
 Clinton Rd. and Kirkpatrick Ln. provide access to residential neighborhoods.



JEFFERY REALTY
 Retail Specialist

52 Millburn Ave. • Springfield, NJ 07081 • T: 908.668.9600 • F: 908.668.5225 • www.JefferyRealty.com
 All information is from sources deemed reliable and is submitted subject to errors, omissions, change of price, terms, prior sales and withdrawals.





875 BLOOMFIELD AVE. WEST CALDWELL, NJ

FLOOR PLAN



875 BLOOMFIELD AVE. WEST CALDWELL, NJ

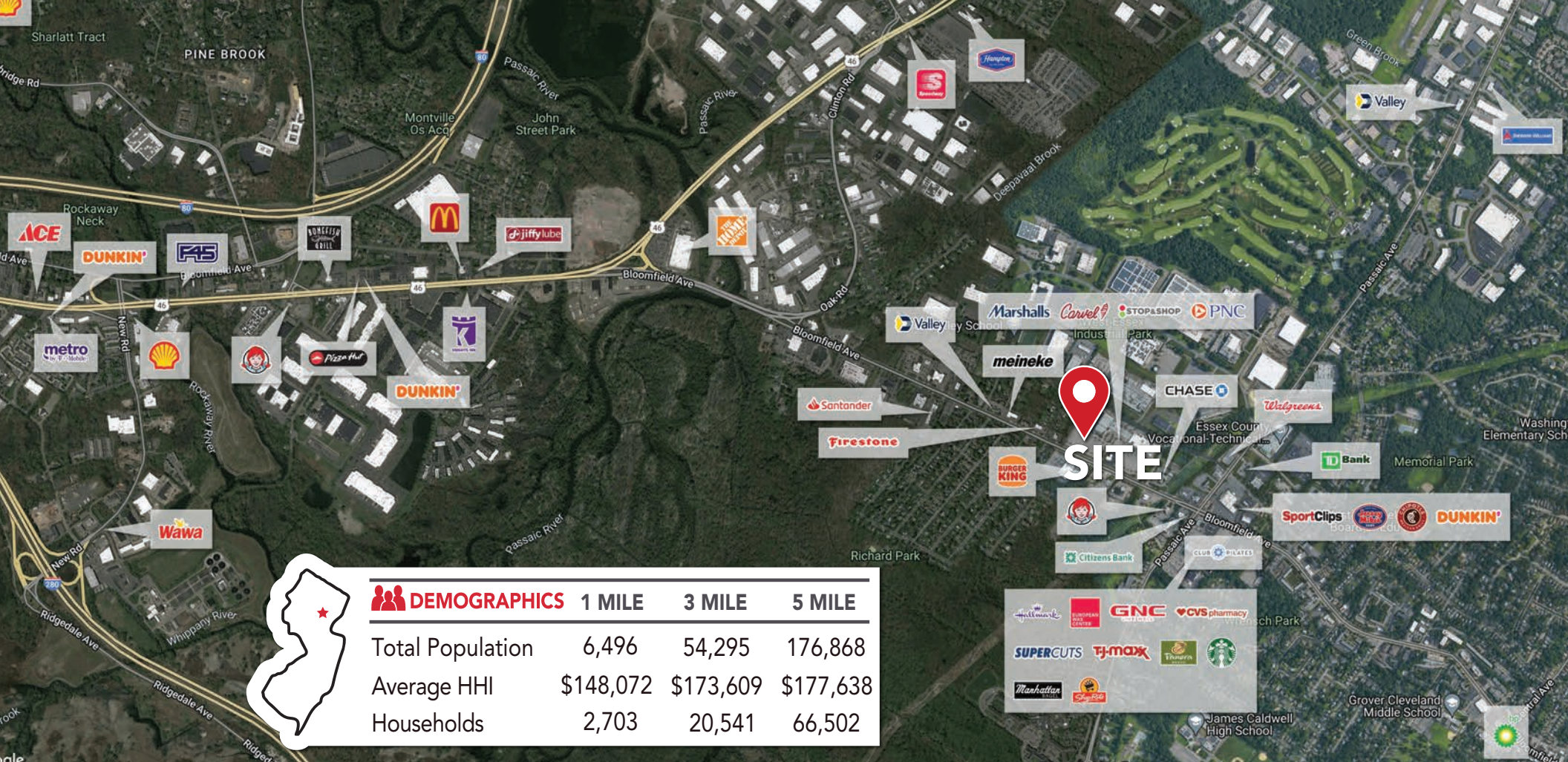
LOCAL AERIAL



JEFFERY REALTY
Retail Specialist

52 Millburn Ave. • Springfield, NJ 07081 • T: 908.668.9600 • F: 908.668.5225 • www.JefferyRealty.com
All information is from sources deemed reliable and is submitted subject to errors, omissions, change of price, terms, prior sales and withdrawals.





875 BLOOMFIELD AVE. WEST CALDWELL, NJ

MARKET AERIAL