

North Lakeland Property

11711 Lakeland Acres Rd. Lakeland FL 33810

\$200,000

Lot Size
4.8 Acres

Frontage
265 feet

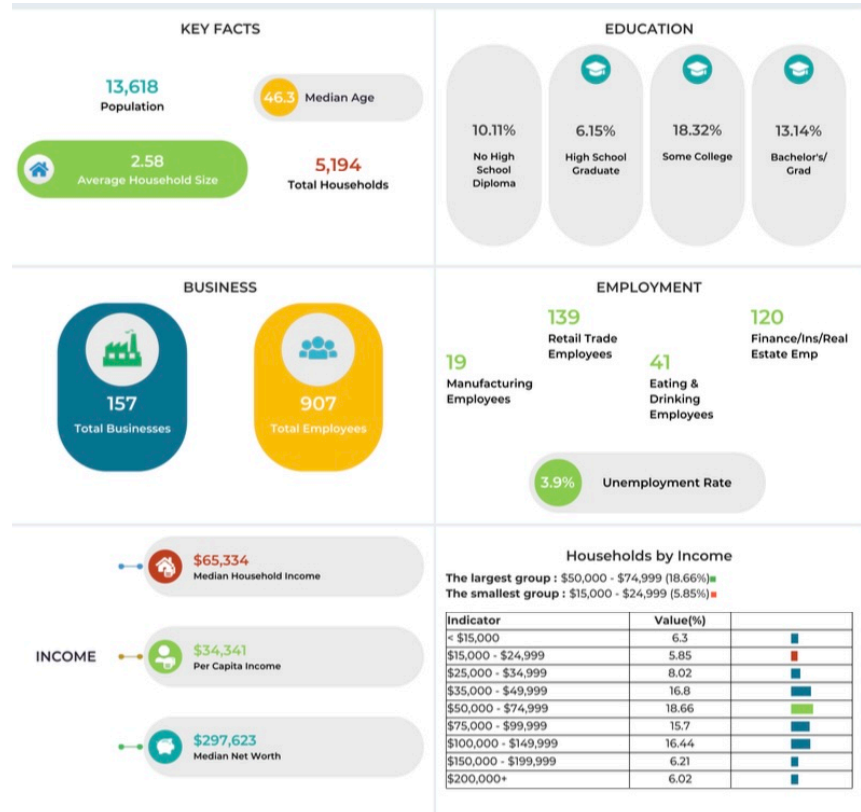
Located in one of Polk County's fastest-growing corridors, this **4.8-acre parcel** with **265 feet of frontage on Lakeland Acres Road** presents an outstanding opportunity for investors and developers. Its size and positioning make it ideal for a small residential subdivision, a private estate development, or a long-term investment in Lakeland's expanding real estate market.

North Lakeland continues to experience steady population growth, with strong demand for affordable housing and land. The property is situated just minutes from **US Highway 98 and Interstate 4**, providing seamless access to Tampa, Orlando, and the greater Central Florida region. Its visibility, frontage, and accessibility enhance its value as a development tract or land bank play.

Investment Highlights:

- 4.8 acres with 265' of paved frontage on Lakeland Acres Road
- Growing North Lakeland location, strong residential demand
- Minutes to US-98, I-4, and Downtown Lakeland
- Potential for subdivision, estate lots, or long-term hold
- Excellent access to shopping, schools, and regional job hubs

This property is a **strategic acquisition for investors and developers** seeking growth in the high-demand Central Florida market.



Karen Myers
realtorkmyers@gmail.com
(863) 651- 4636

Brent Morse
BrentLMorse@Gmail.com
(407) 463-6952



