

FOR LEASE

5255 W. SUNSET BLVD

LOS ANGELES, CA 90027



AFFORDABLE 2ND FLOOR OFFICE/MEDICAL SUITES AVAILABLE

WESTMAC COMMERCIAL BROKERAGE COMPANY

1515 S Sepulveda Boulevard, Los Angeles, CA 90025
310.478.7700 | Company DRE #01096973 | www.westmac.com

WESTMAC
Commercial Brokerage Company

Suite Information



Location 5255 Sunset Boulevard
Los Angeles, CA 90027

Available Suites Suite 201: ±1,350 square feet
Suite 203; ± 350 square feet

Rental Rate \$2.35 per square foot, modified gross

Term Two to five [2-5] years

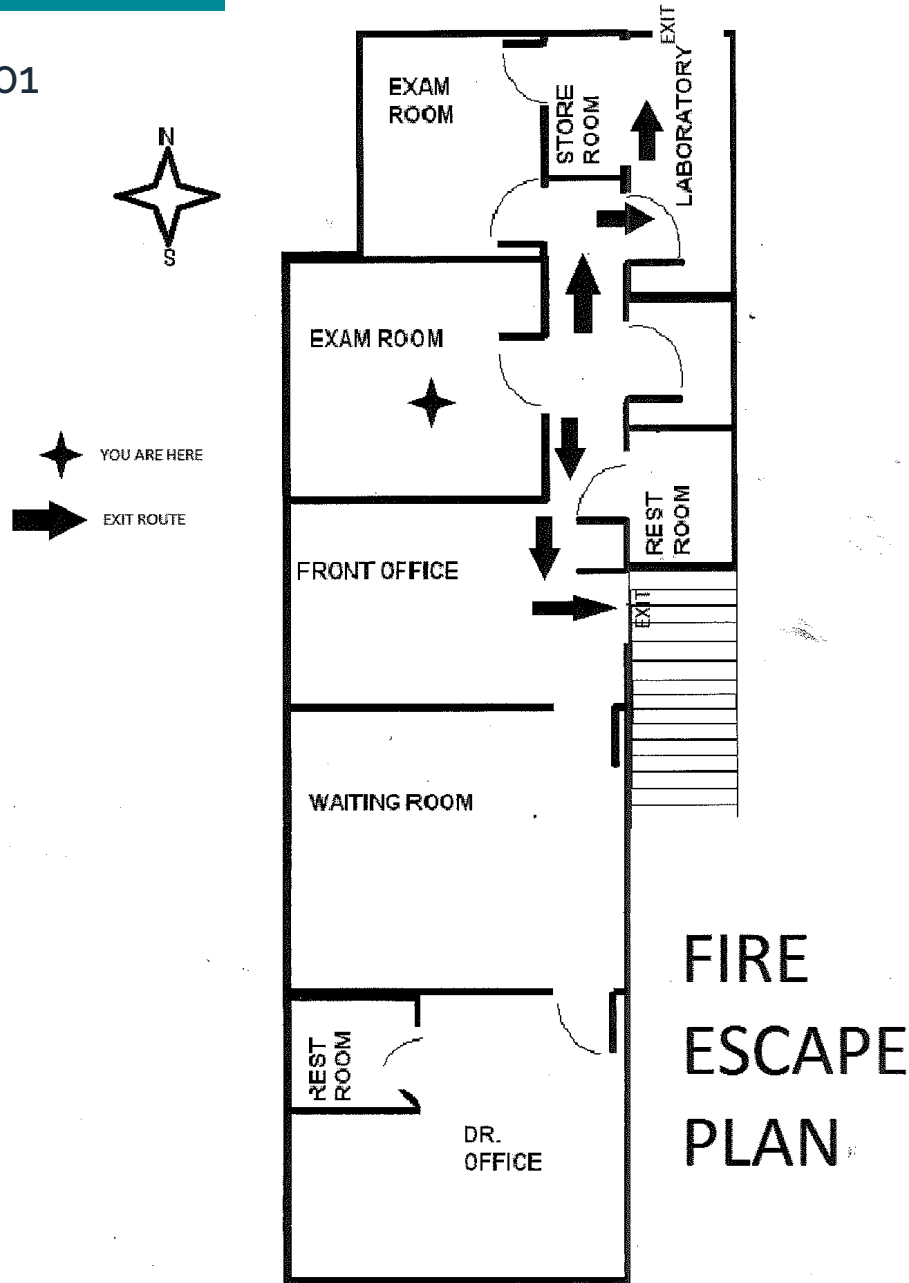
Availability Immediately

- Comments*
- » Spacious and well appointed office suite.
 - » Close proximity to Children's Hospital, Kaiser Permanente, and Hollywood Presbyterian Hospital.
 - » Three total offices (two current exam rooms) and waiting and reception area.
 - » Two private restrooms
 - » Two designated parking spaces
 - » Suites 203 consists of two separate rooms

We obtained the information contained in this memorandum from sources we believe to be reliable. However, we have not verified its accuracy and make no guarantee, warranty or representation about it. It is submitted subject to the possibility of errors, omissions, change of price, rental or other conditions, prior sale, lease or financing or withdrawal without notice. We include projections, opinions, assumptions or estimates for example only, and they may not represent current or future performance of the property. You and your tax and legal advisors should conduct your own investigation of the property and transaction. | This statement with the information it contains is given with the understanding that all negotiations relating to the purchase, renting, or leasing of the property described above shall be conducted through this office. The above information while not guaranteed has been secured from sources we believe to be reliable.

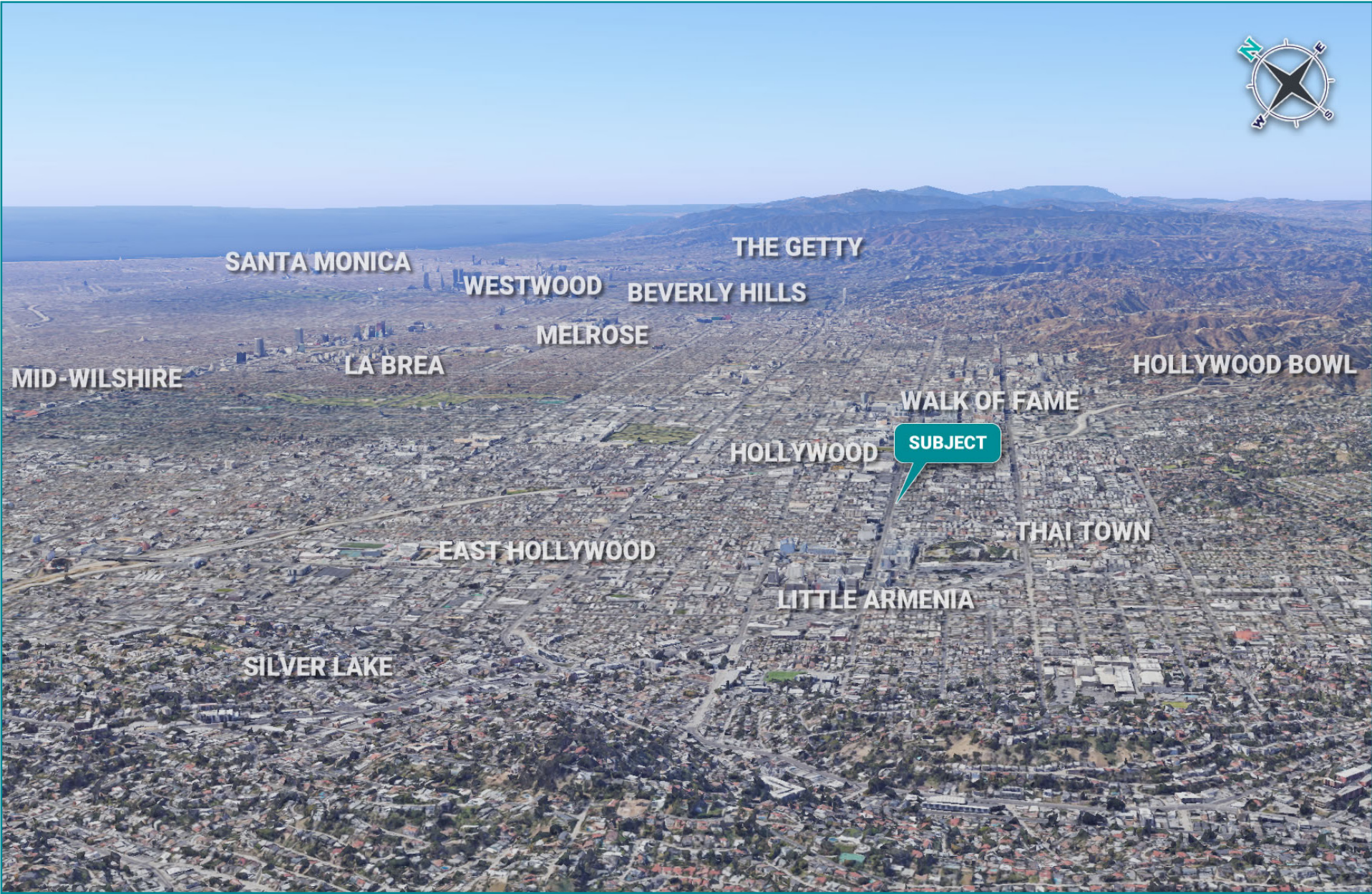
Floorplan

Suite 201



We obtained the information contained in this memorandum from sources we believe to be reliable. However, we have not verified its accuracy and make no guarantee, warranty or representation about it. It is submitted subject to the possibility of errors, omissions, change of price, rental or other conditions, prior sale, lease or financing or withdrawal without notice. We include projections, opinions, assumptions or estimates for example only, and they may not represent current or future performance of the property. You and your tax and legal advisors should conduct your own investigation of the property and transaction. This statement with the information it contains is given with the understanding that all negotiations relating to the purchase, renting, or leasing of the property described above shall be conducted through this office. The above information while not guaranteed has been secured from sources we believe to be reliable.

Aerial Maps





Exclusively Listed by:



Michael F. Rojas

Vice President

rojas@westmac.com

310.478.7700 x 302

DRE #01853734

WESTMAC

Commercial Brokerage Company

WESTMAC COMMERCIAL BROKERAGE COMPANY

1515 S Sepulveda Boulevard, Los Angeles, CA 90025 | 310.478.7700 | www.westmac.com | Company DRE #01096973