



PROPERTY FOR LEASE

Trico III Office Warehouse

1785 South Bluffridge Drive
Syracuse, UT 84075



PROPERTY SUMMARY

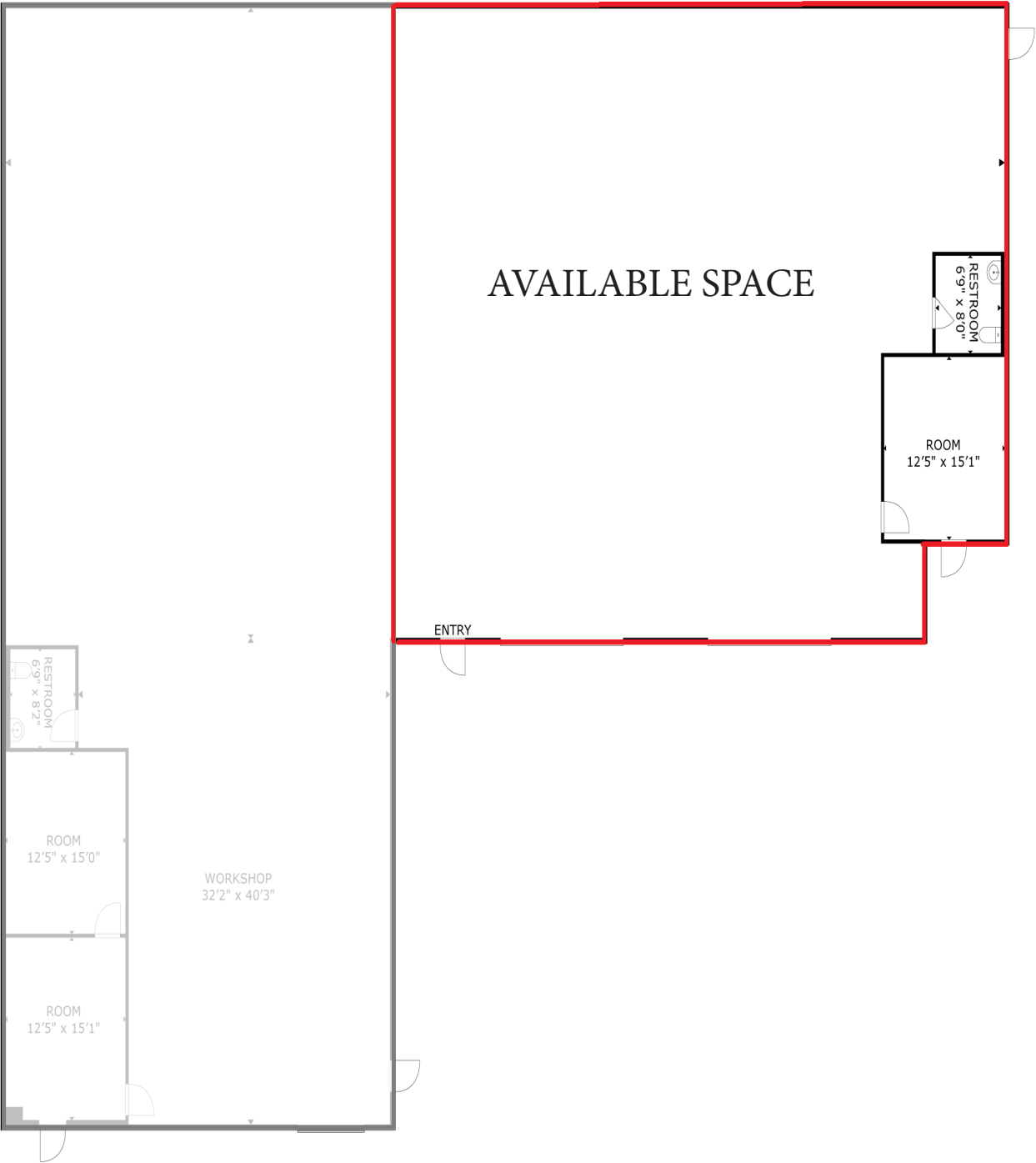
This 6,950 square foot building is a brand new office warehouse behind the Pizza Factory in Syracuse. It consists of 2 units, each with their own bay doors and built out office space. We are currently leasing the southern unit, totaling approx 3,244 SF. It has 2, 12 foot bay doors.

Building Specs

Lease Rate:	\$1.00/ PSF
Lease Type:	NNN
Square Footage:	3,244 SF
Power:	100 Amps/Panel
Bay Doors:	12 Feet- 2 Doors



FLOOR PLAN



AERIAL VIEW



BRANDON L. WOOD - President/Principal Broker
Phone : 801-593-5500
brandon@northwoodgrp.com

KATIE RICHARDSON - Commercial Real Estate Agent
Phone : 801-593-5500
katie@northwoodgrp.com

WWW.NORTHWOODGRP.COM