

1501 E Osborn Rd
Phoenix, AZ



TRANSWESTERN

REAL ESTATE
SERVICES



Office Suites Available For Immediate Occupancy

Kathleen Morgan

Managing Director

1 602 809 1048

kathleen.morgan@transwestern.com

Kevin Smigiel

Vice President

1 602 550 9295

kevin.smigiel@transwestern.com

Vince Femiano

Managing Director

1 602 791 3310

vince.femiano@transwestern.com

Andrew Olivet

Associate

1 602 370 2685

andrew.olivet@transwestern.com

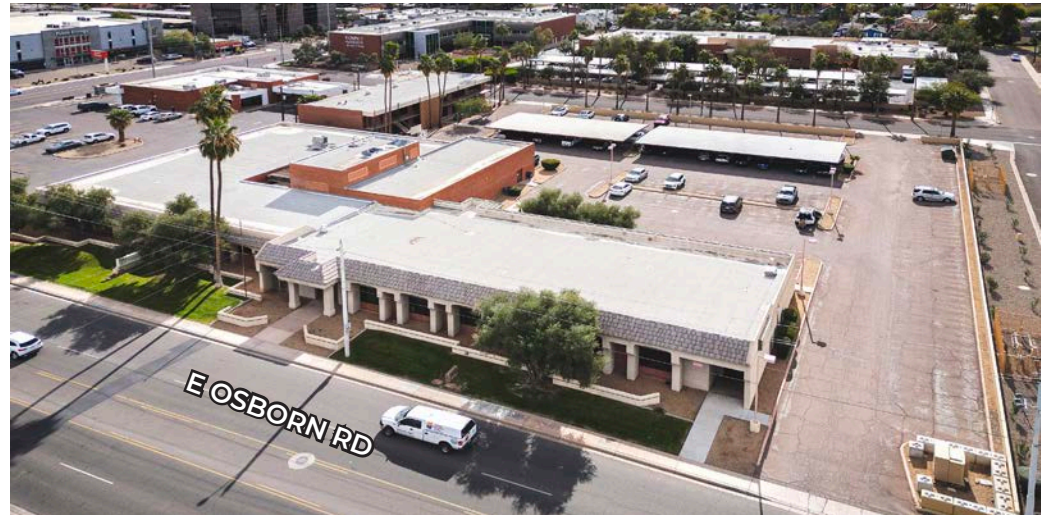
The information provided herein was obtained from sources believed reliable; however, Transwestern makes no guarantees, warranties or representations as to the completeness or accuracy thereof. The presentation of this property is submitted subject to errors, omissions, change of price or conditions, prior sale or lease, or withdrawal without notice. Copyright © 2026 Transwestern.

Office Suites Available for Immediate Occupancy



\$16.00 Full Service, Net of Janitorial
3% Annual Increase

- **Suite 202:** ±1,221 RSF
- **Suite 204:** ±1,248 RSF



Available for **Immediate Occupancy**

Kathleen Morgan

Managing Director

1 602 809 1048

kathleen.morgan@transwestern.com

Kevin Smigiel

Vice President

1 602 550 9295

kevin.smigiel@transwestern.com

Vince Femiano

Managing Director

1 602 791 3310

vince.femiano@transwestern.com

Andrew Olivet

Associate

1 602 370 2685

andrew.olivet@transwestern.com



TRANSWESTERN

REAL ESTATE
SERVICES



Available for Immediate Occupancy



Kathleen Morgan

Managing Director

1 602 809 1048

kathleen.morgan@transwestern.com

Kevin Smigiel

Vice President

1 602 550 9295

kevin.smigiel@transwestern.com

Vince Femiano

Managing Director

1 602 791 3310

vince.femiano@transwestern.com

Andrew Olivet

Associate

1 602 370 2685

andrew.olivet@transwestern.com



TRANSWESTERN

REAL ESTATE
SERVICES