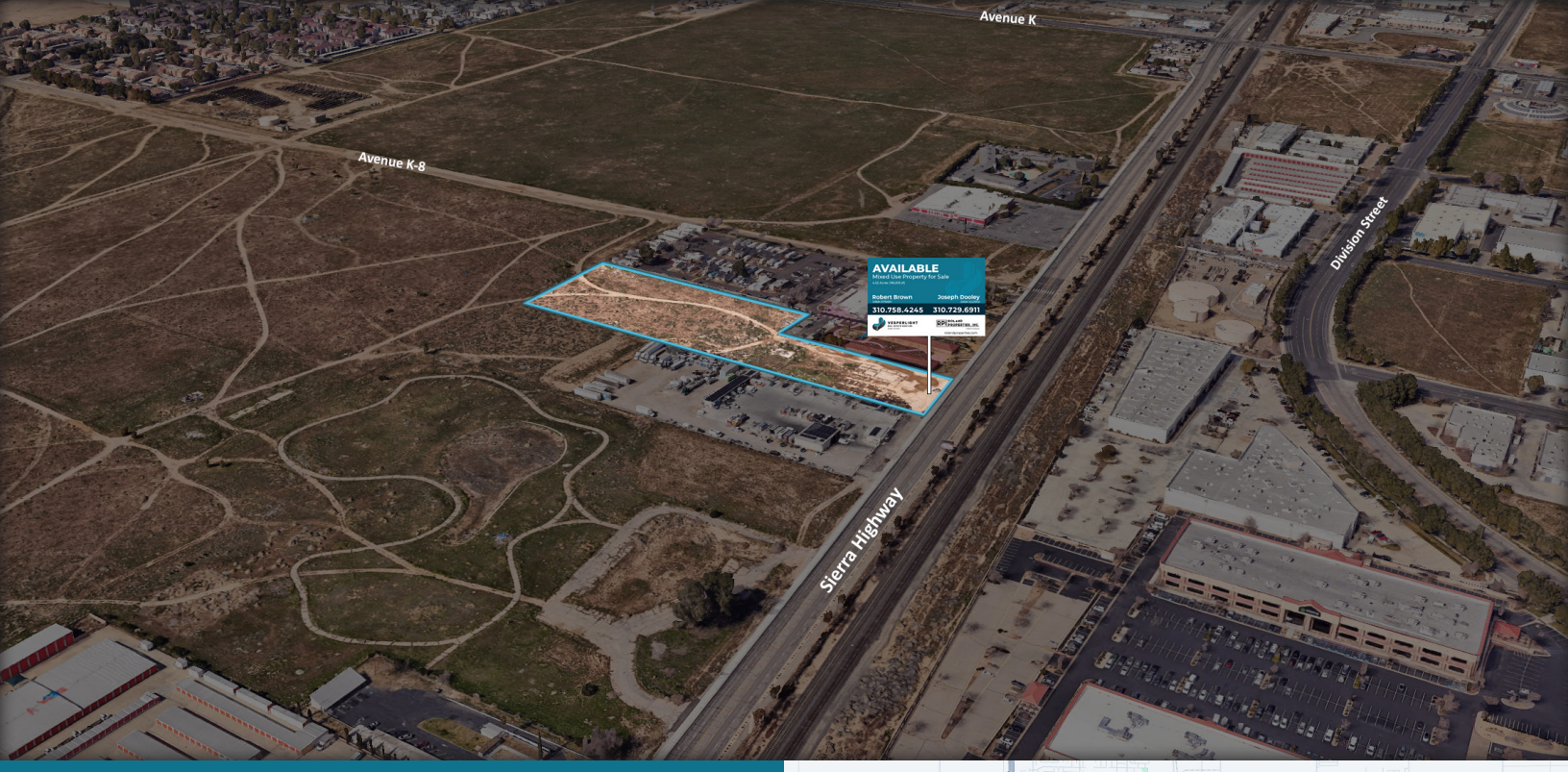




VESPERLIGHT
REAL ESTATE SERVICES

4.52 ACRES MIXED-USE LAND FOR SALE

SIERRA HWY VIC AVE K8 | LANCASTER, CA 93535



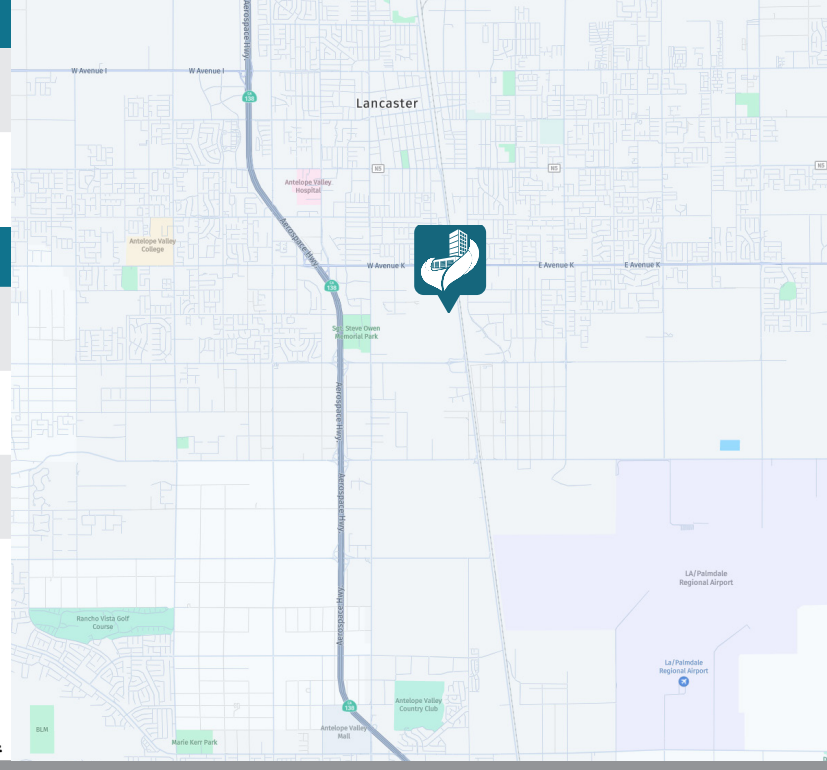
VITAL INFORMATION

PURCHASE PRICE \$600,000.00 (\$3.05 psf)

APN (LA County): 3128-005-034

PROPERTY DETAILS

- ~196,935 Sq. Ft. Available (~4.52 Acres)
- Mixed Use Zoning (LRMU-E) with Utilities at Street
- On the Perimeter of Urban Sprawl
- Adjacent to ~300 Acres of Industrial Development



In collaboration with



ROBERT BROWN

President | DRE# 01758391

e rbrown@vesperlightre.com

p 310.758.4245

JOSEPH DOOLEY

Associate | DRE# 02221903

e jd@rolandproperties.com

p 424.281.8747