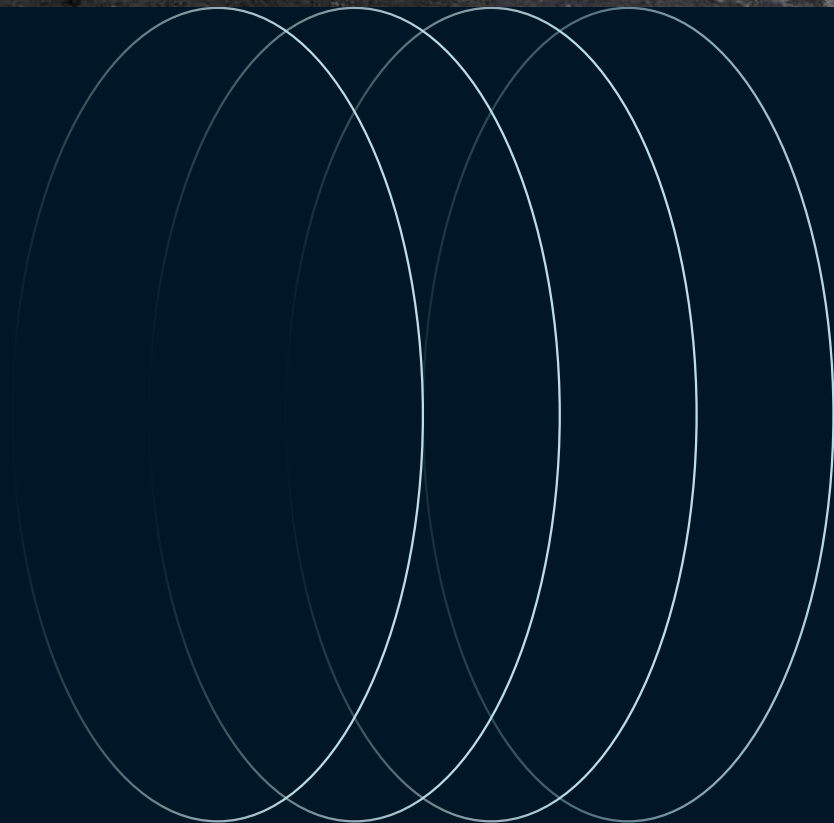
 **JLL** SEE A BRIGHTER WAY

For sale

18 Goshen Road
Cape May Courthouse, NJ



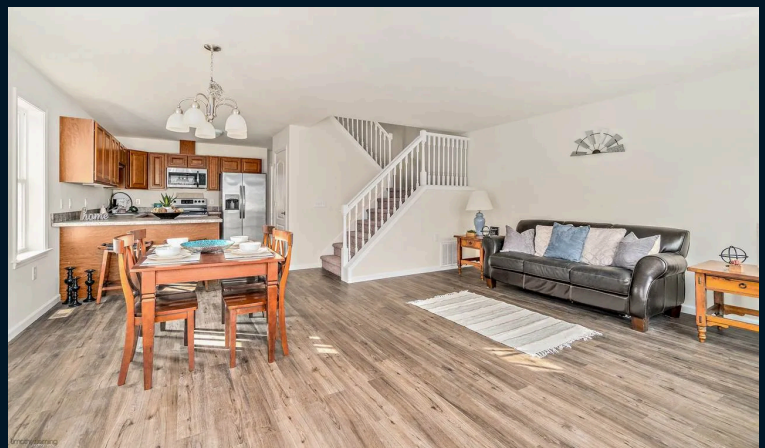
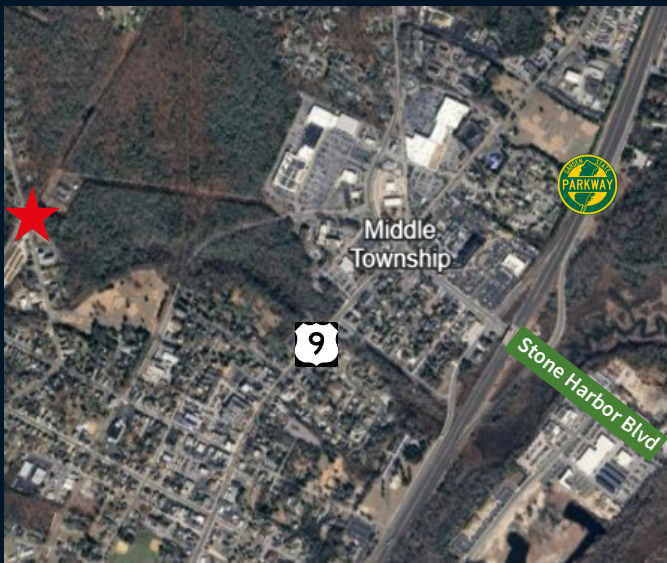
18 Goshen Road Cape May Courthouse, NJ

18 Goshen Road enjoys excellent accessibility with convenient access to Route 9 and the Garden State Parkway, ensuring seamless connectivity throughout South Jersey. Minutes from Cape May County's popular shore destinations, this location captures the benefits of both year-round residential activity and seasonal tourism traffic, making it an ideal setting for businesses seeking stability and growth potential in South Jersey's premier coastal county.

For Sale: 8-Unit Townhouse Apartment Building

Property Highlights

- Eight separate 1,600 SF units
- 4 bed 3 bath
- Constructed 2019
- Natural gas & central air
- Zoned TR - Town Residential
- Converting to condominiums a possibility



Rick Widerman
rick.widerman@jll.com
+1 215 880 3266

Jones Lang LaSalle Brokerage, Inc.
220 Lake Drive E, Suite 102
Cherry Hill, NJ 08002
+1 856 324 5300